

**71<sup>st</sup> Annual TULIP TUNE-UP REGATTA**  
**GULL LAKE STAR FLEET (GL) & GULL LAKE YACHT CLUB (GLYC)**  
**May 18-19, 2024 — Gull Lake — Richland, Michigan**

Amendment 1

**SAILING INSTRUCTIONS**

**1 RULES** — The regatta will be governed by *rules* as defined in *The Racing Rules of Sailing* (RRS) and International Star Class rules (STCR).

**2 NOTICES TO COMPETITORS** — will be posted on the official notice board located near the Quarterdeck Room.

**3 CHANGES TO SAILING INSTRUCTIONS** — will be posted before 0900 hrs on the day it will take effect, except that any change to the schedule of races will be posted by 1800 hrs on the day before it will take effect.

**4 SIGNALS MADE ASHORE** —

4.1 — Signals made ashore will be displayed from the docked signal boat.

4.2 — When Signal flag AP is displayed ashore, '1 (one) minute' is replaced with 'not less than 30 (thirty) minutes' in race signals AP. This changes RRS Race Signal AP.

**5 SCHEDULE OF RACES** — Racing is scheduled as follows:

RACE(S)	DAY & DATE	TIME OF 1 <sup>st</sup> WARNING SIGNAL
Competitors meeting	Saturday, May 18	0930 hrs
Races 1, 2, 3	"	1100 hrs
Races 4, 5,	Sunday May 19	1000 hrs
	"	(No Warning Signal Past 1330 hrs)

**6 CLASS FLAG** — The Star Class Flag will be a red star against a white background.

**7 RACING AREA** — The racing area will be Gull Lake.

**8 THE COURSES** — will be according to STCR 34 and are shown in Illustration A, except that the starting and finishing pins will be marks of the course per STCR 34.4.1 & 3.

8.1 — In the event that one of the gate marks is not in place, boats shall round the existing leeward mark to port.

**9 MARKS** —

9.1 — Marks 1, 2, 3A, and 3B will be orange inflatables.

9.2 — New marks, as provided in Sailing Instruction 11 — CHANGE OF THE POSITION OF THE NEXT MARK, will be yellow inflatables. When a leeward gate is changed, only one of the marks will be yellow.

9.3 — Offset marks will be small orange inflatables.

**10 THE START** —

10.1 — The starting line will be between a staff displaying an orange flag or shape on the race committee signal boat at the starboard end and the course side of Mark 3 at the port end.

10.2 — A boat starting later than ten (10) minutes after her starting signal will be scored Did Not Start (DNS). This changes RRS Appendix A4 and A5.

**11 CHANGE OF THE NEXT LEG OF THE COURSE** — To change the next leg of the course, the race committee will lay a new mark (or move the finishing line) and remove the original mark as soon as practicable. When in a subsequent change a new mark is replaced, it will be replaced by an original mark.

**12 THE FINISH** —

12.1 — The finishing line will be between a staff displaying an blue flag or shape on a race committee boat and the course side of a nearby mark. The finish mark will be white

**13 TIME LIMIT** —

13.1 — The time limit will be two (2) hours for the first boat to finish. Boats failing to finish within thirty (30) minutes after the first boat finishes or within the time limit, whichever is later, will be scored Did Not Finish (DNF).

13.2 — When the first boat has not completed the first leg within forty-five (45) minutes after the start, the race will be abandoned.

**14 PROTESTS AND REQUESTS FOR REDRESS** —

14.1 — Protest forms are available at the race office. Protests shall be delivered there within the protest time limit.

14.2 — The protest time limit is thirty (30) minutes after the RC signal boat has docked after the last race of the day.

14.3 — Notices will be posted within thirty (30) minutes of the protest time limit to inform competitors of hearings in which they are parties, or named as witnesses.

14.4 — Notices of protests by the race committee or protest committee will be posted to inform boats under rule 61.1(b).

**15 SCORING** — The Low Point scoring system of RRS A2 is modified so that each boats score will be her total score. No score(s) will be excluded for those participating in Tulip Tune Up. Five (5) races are scheduled, of which one (1) race is required to be completed to constitute a series.

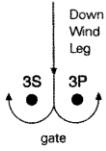
**16 PRIZES** — Prizes for Tulip Tune Up will be awarded to the Skipper and Crew of the top five (5) finishers and will be the traditional Tulip Tune-Up Wooden Shoes.

**17 DISCLAIMER OF LIABILITY** — Competitors participate in the regatta entirely at their own risk. See RRS 4, Decision to Race. The organizing authority will not accept any liability for material damage or personal injury or death sustained in conjunction with or prior to, during, or after the regatta.

**18 INSURANCE** — Each participating boat shall be insured with valid third-party liability insurance.

**Star Class Courses**  
(STCR 34.3 and 34.4)

In case of small regattas the starting line may be set up at mark 3 and the finishing line at mark 1 or mark 3.



Courses 0, 1, 2, 3 and 4 are diagramed as described in STCR 34.3 and modified in the diagrams as allowed by STCR 34.4.

In Gold and Silver events, Course 0, 1, 3 or 4 shall be used. Course 2 may be used in Silver events if requested by the sponsoring fleet and approved by the Continental Committee.

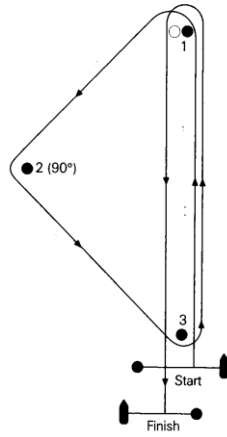
In Blue and Green events Course 0, 1, 2, 3, and 4 shall be used.

No course may be shortened during Gold, Silver, Blue or Green Events.

In Red events and Qualifications the above courses are not mandatory and may be shortened.

**Course "1"**

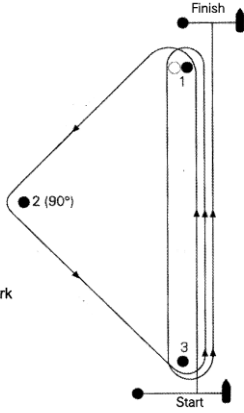
Start  
1  
2  
3  
1  
(or 1 + offset mark)  
Finish (downwind)



○ = optional offset mark

**Course "0"**

Start  
1  
2  
3  
1  
3 (or gate 3A - 3B)  
Finish (upwind)



○ = optional offset mark

**Course "2"**

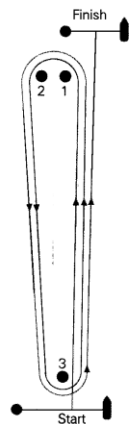
Start  
1  
2  
3  
1  
(or 1 + offset mark)  
3 (or gate 3A - 3B)  
1  
2  
3  
Finish (upwind)

The same Course as Course "0"

Course 2 may not be used at Gold events, and may only be used at Silver events with approval of the continental committee. (STCR 34.3.1)

**Course "3"**

Start  
1  
2  
3 (or gate 3A-3B)  
1  
2  
3 (or gate 3A-3B)  
Finish (upwind)



**Course "4"**

Start  
1  
2  
3 (or gate 3A - 3B)  
1  
2  
Finish (downwind)

