



# 2024

## GUARDIANS OF THE GREAT LAKES

### MELGES 24 REGATTA

### SAILING INSTRUCTIONS

AUGUST 17TH & 18TH – WEST GRAND TRAVERSE BAY – TRAVERSE CITY MI  
ORGANIZING AUTHORITY & HOST: GRAND TRAVERSE YACHT CLUB  
HOST: USCG AIR STATION TRAVERSE CITY  
REGATTA CHAIRS: SCOT ZIMMERMAN & TOM ROOP  
RACE MANAGEMENT CONTACT: JORDAN OWEN, JO@GTYC.ORG

#### 1. Rules –

1.1 – The regatta will be governed by the rules as defined in The Racing Rules of Sailing.

1.2 The Racing Rules will be changed as follows:

- a) Race Signal AP – when displayed ashore, ‘one minute’ is replaced by ‘thirty minutes’.
- b) 44.1– the ‘Two-Turns Penalty’ is replaced by the ‘One-Turn Penalty’, except a situation where RRS Appendix V1 will apply.
- c) App A2 - A boat’s series score will be the total of her race scores (no throwouts).
- d) App A4.2 – A boat that does not finish (DNF) a race or retires after finishing (RAF) shall be scored one more point than the last boat to finish in that race.
- e) RRS 32 - Courses will not be shortened.

**2 - Notices To Competitors** — will be posted on the official notice board online at [yachtscoring.com](https://yachtscoring.com) and posted on the unofficial notice board opposite the heads located in the GTYC clubhouse. ([https://yachtscoring.com/notice\\_board.cfm?eid=16022](https://yachtscoring.com/notice_board.cfm?eid=16022))

**3 - Changes to Sailing Instructions** — Any change to the sailing instructions will be posted before ninety (90) minutes prior to the scheduled warning signal on the day it will take effect, except that any change to the schedule of races will be posted by 1800 hrs or the end of protest time, whichever is later, on the day before it will take effect.

#### 4 - Signals Made Ashore

4.1 - Signals made ashore will be displayed from the GTYC flag pole and communicated via VHF Ch 69.

4.2 - When Flag AP is displayed ashore, ‘1 minute’ is replaced by ‘not less than thirty (30) minutes’ in RRS. Race Signal AP. This changes RRS Race Signal AP.

## 5 - Schedule

<i>Day</i>	<i>Time</i>	<i>Event</i>
Friday	1600-1800 hrs 1800-2100 1730-1930	Practice Race (tentative) Check-In Dinner Available at the Club
Saturday	0900-1045 hrs 1045 1045 1200  1730-1930	Check-In Coast Guard Helicopter Flyover Optional Competitors Meeting Earliest Warning Signal Up to Six (6) Races Planned for Saturday Regatta Dinner <i>Four wristbands included with registration, additional wristbands available for \$25 at the bar</i>
Sunday	1100 hrs 1415 1600	Earliest Warning Signal No Warning Signal Past This Time Awards at GTYC with USCG Commander

5.1 - Up to nine (9) races are scheduled.

5.2 - Races will be sailed back to back with very little time in between. Stay close to the starting area when not racing.

**6 - Class Flag** — will be the red/white Melges 24 class flag.

**7 - Racing Area** — will be West Grand Traverse Bay in an area defined from Government Mark Red 8, one mile to the East, and one mile to the South.

**8 - The Course** — (see Attachment B)

8.1 - All courses will be four (4) leg Windward/Leewards. An offset mark may be used at Mark W and shall be rounded after rounding Mark W. A gate may be used at Mark L.

8.2 - On the first and last leg of the course, Mark L (s & p), if present, is not considered a mark of the course and may be passed on either side.

8.3 - All marks shall be left to port, except —

a - the finish mark which shall be left to starboard.

b - when there is a gate at Mark L, boats shall sail between the gate marks (Ls & Lp) from the direction of the previous mark and round either gate mark. (see Attachment C) If only one (1) mark is present it shall be rounded to port.

8.4 - Courses will not be shortened. This changes RRS 32.

## **9 - Marks —**

9.1 - The windward mark will be specified by the RC prior to each race from the following:

- 1) *Green tetrahedron*
- 2) *Yellow tetrahedron*
- 3) *Orange tetrahedron*

The signal boat will post the windward mark color indicated by a flag of the same color and compass heading prior to the warning signal. The mark color will also be broadcast as a courtesy on VHF 69

9.2 - Gate marks Ls, & Lp will be *yellow inflatable cans*.

9.3 - The windward offset mark will be a *small yellow inflatable ball*.

9.5 - The start mark will be a *4' orange cylinder*.

9.6 - If used, the finish mark will be a *2' small orange inflatable ball*. (if not used, the finish line is between the orange cylinder and the flag on the signal boat.

## **10 - The Start —**

10.1 - The starting line will be between a staff displaying an orange & white checkered flag on the RC Signal boat at the starboard end and the course side of the orange cylinder start mark at the port end. The finish mark (if used) is not part of the starting line.

10.2 - AP down & General Recall down will be accompanied by the short blasts. This changes Race Signals AP & 1st Substitute.

10.3 - Individual and general recalls will be signaled in accordance with rule 29. The race committee intends to make an attempt to hail boats who have not started properly on VHF ch 69. The following are not grounds for redress: failure of committee to hail any or all boats; failure of committee to accurately hail one or more boats; failure of a boat to hear its hail; timeliness of the hail; or the order of boats within the hail.

**11 - Change Of The Next Leg Of The Course** – To change the next leg of the course, the race committee will lay a new mark (or move the finishing line) and/or designate an alternative set mark. Course changes will only take place at the leeward mark(s) announcing changes to the subsequent windward mark.

**12 - The Finish** — The finishing line will be between a staff displaying a orange/white flag on the RC boat at the port end and the course side of the finish mark (small orange inflatable ball) at the starboard end. If the small orange inflatable ball is not used, the finish line is between the orange cylinder and the flag on the signal boat.

**13 - Penalty System** — RRS 44.1 is changed so that the Two-Turns Penalty is replaced by the One-Turn Penalty. RRS APP V1 applies.

**14 - Time Limits and Target Times**— this changes RRS 35.

14.1 - The time limit for any race will be 75 minutes for the first boat to finish.

14.2 - Boats not finishing within 12 minutes of the first boat to finish will be scored Time Limit Expired (TLE) and scored as below in 16.3.

14.3 - If no boat has passed Mark 1 within twenty (20) minutes, the race will be abandoned.

14.4 - The target time for all races will be thirty to forty (30 - 40) minutes. Failure to meet the target times will not be grounds for redress.

### **15 - Protests and Requests For Redress —**

15.1 - Protests forms will be available in the Race Office adjacent to the GTYC lobby and shall be delivered within the protest time limit.

15.2 - The protest time limit is sixty (60) minutes after the RC Signal Boat docks. This time will be broadcast on VHF Channel 69 and posted on the official notice board.

15.3 - Notices will be posted within thirty (30) minutes of the protest time limit to inform competitors of hearings in which they are parties or named as witnesses. Hearings will be held in the Protest Room (Commodore's Room at GTYC or designated substitute) and will be heard by appointed judges. Judges may include those appointed to serve remotely via the Zoom multimedia communications application. A designated Deputy PRO may act as onsite proctor for the hearing and a technology aide may be utilized.

15.4 - (This changes RRS 66) On the last day of the regatta, a request for reopening a hearing shall be delivered - a) within the protest time limit if the party requesting reopening was informed of the decision on the previous day b) no later than thirty (30) minutes after the party requesting reopening was informed of the decision on that day.

### **16 - Scoring —**

16.1 - One race shall be completed to constitute a series.

16.2 - A boat's series score will be the total of her race scores. This changes App A2.

16.3 - A boat that does not finish a race (DNF), time limit expired (TLE), or retires after finishing (RET) will be scored one more point than the last boat to finish in that race. This changes RRS App A4.2

### **15 - CODE OF CONDUCT**

15.1 Competitors shall comply with any reasonable request from any official, and shall not behave so as to bring the event or the sport into disrepute.

15.2 Competitors are expected to comply fully with rule 2 at all times. Abuse or intimidation of other competitors, race officials, or officials of the host club will not be tolerated. All such incidents shall be reported to the Principal Race Officer. Repeated incidents by individuals or teams shall be reported to the protest committee and may be considered gross misconduct (a gross breach of sportsmanship).

15.3 When a competitor and/or crew is found to have committed an act of Gross Misconduct, the penalty shall be a scoring penalty equal to 40% of the entries in the race for each incident. Additionally, the competitor and/or boat that was responsible for the crew may not discard this race in the series.

15.4 Competitors shall not obstruct Race Management vessels as they conduct operations including setting marks, anchoring, and judging the start/finish line. Repeated incidents by individuals or teams shall be reported to the protest committee.

**16 - SAFETY REGULATIONS** — *Signal Boat cell number is 616-450-6746*

16.1 - A boat that retires from a race or leaves the racing area is requested to notify the RC on VHF Ch 69, by cell phone, or by hailing any RC boat. A boat that subsequently returns to the racing area is asked to check in with the RC Signal Boat as in 17.1 or via VHF Ch 69. There will be no penalty for not checking out or back in.

**16.2 — *The primary communication for all medical emergencies is 911***

16.3 - The Signal Boat is equipped with an AED device.

16.3 - Weather will be monitored via the following applications: “My Radar”, “Storm - Weather Radar”, & “My Lightning Tracker”. Decisions regarding racing by the OA and PRO will be based on these applications.

**19 - Radio Communication** — A boat shall neither make radio transmissions while racing nor receive radio communications not available to all boats. VHF Channel 69 will be monitored by the RC and they will only respond to competitors who identify themselves.

**20 - Prizes** — will be awarded to crews placing 1st through 5th overall.

**21 - Disclaimer Of Liability** — Competitors participate in the regatta entirely at their own risk. See rule 4, Decision to Race. The organizing authority will not accept any liability for material damage or personal injury or death sustained in conjunction with or prior to, during, or after the regatta.


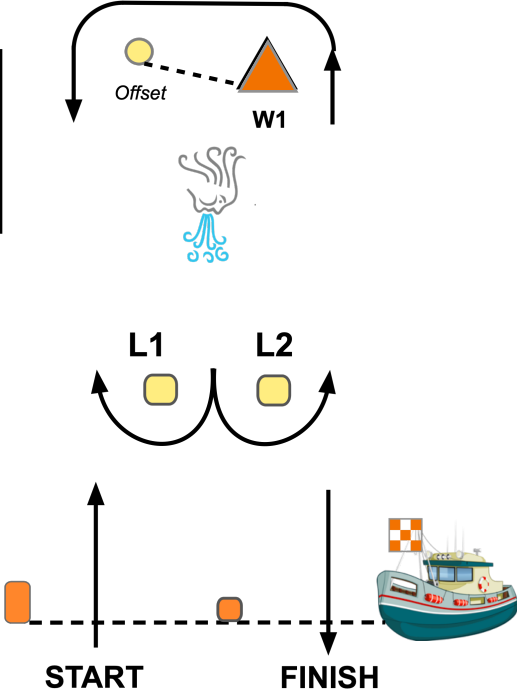

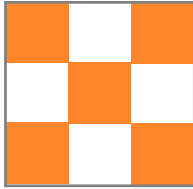
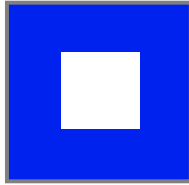
**21 - INSURANCE** - Each participating boat shall be insured with valid, third party liability insurance with a minimum coverage of \$300,000 USD.

**22 - CONTACT**

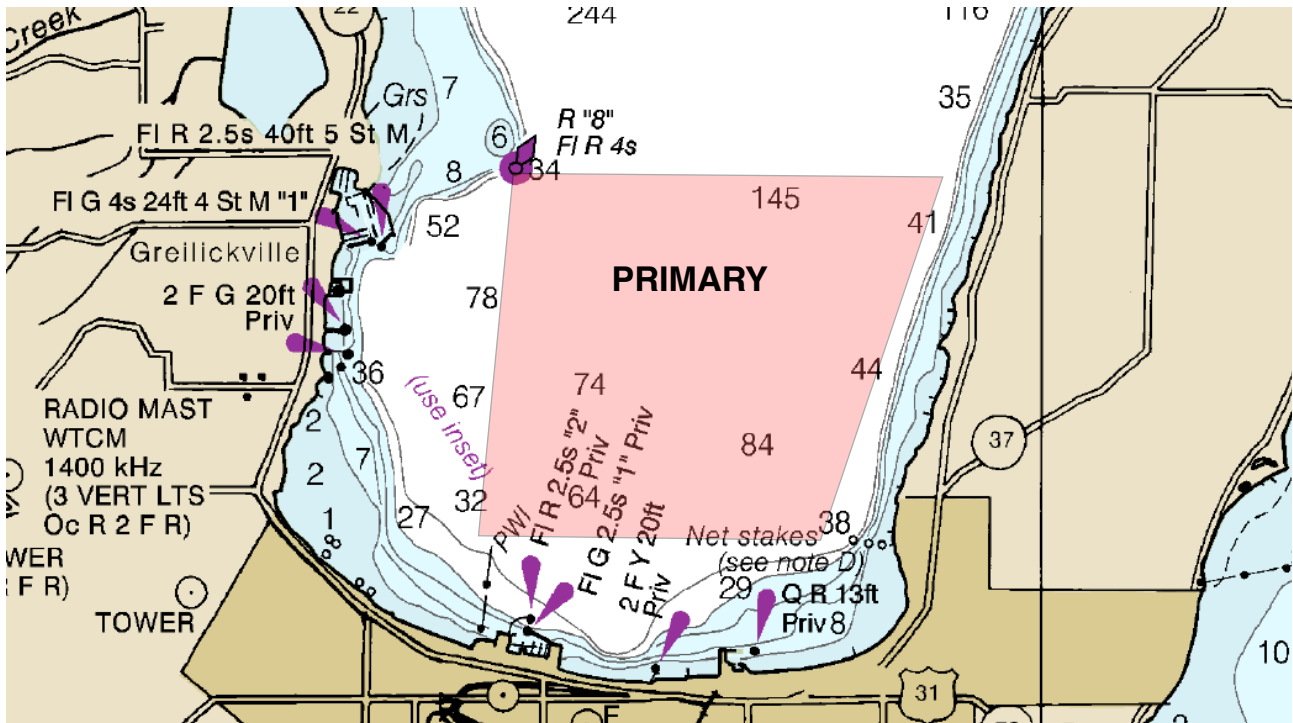
Event: Scot Zimmerman - 231-620-7783

Race Management: Jordan Owen - 231-883-5741

Sailing Instructions, Appendix A, Page 1

 <p style="text-align: center;"><b>Four Leg Windward/ Leeward, Downwind Finish</b></p>		 <p style="text-align: center;">Class Flag</p>
		 <p style="text-align: center;">Start/Finish Flag</p>
		 <p style="text-align: center;">Prep Flag (RRS 26: Up at 4 min, Down at 1 min.)</p>

*Primary Race Area, 1 sq mile east of Red 8, 1 mile south*





**USCG AIR STATION TRAVERSE CITY**  
GRAND TRAVERSE YACHT CLUB

**GUARDIANS OF THE GREAT LAKES MELGES 24 REGATTA**

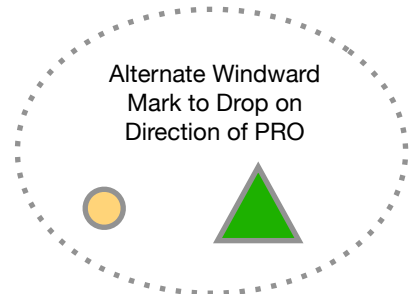
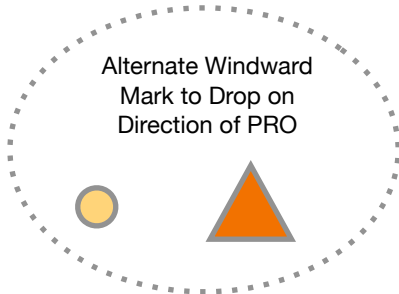
FORMERLY KNOWN AS THE GRAND TRAVERSE INVITATIONAL

Sailing Instructions, Appendix A, Page 2  
GTYC Race Management Three Mark System

**Windward Mark**

Tetrahedron of Designated

Color



**Leeward Gate(s)**

Can/Tomato

(1 to 1 Height/Width ratio)

If only one mark is used, it is to be rounded to port



**Start**

Orange Cylinder  
(2 to 1 Height/Width ratio)



**Finish Mark**

Not a mark of the course at the start



**Signal Boat**

Orange/White Flag is the boat end of the starting line

**General Race Communications: VHF Ch. 69**

**Offset Mark** set approximately 6 Boat Lengths away from the windward mark, 80 to 90 degrees off the wind direction in relation to the mark



**Change of Course at Leeward Mark:**

Charlie + Color Flag + Heading  
Whiteboard + Whistle



+



+



+

