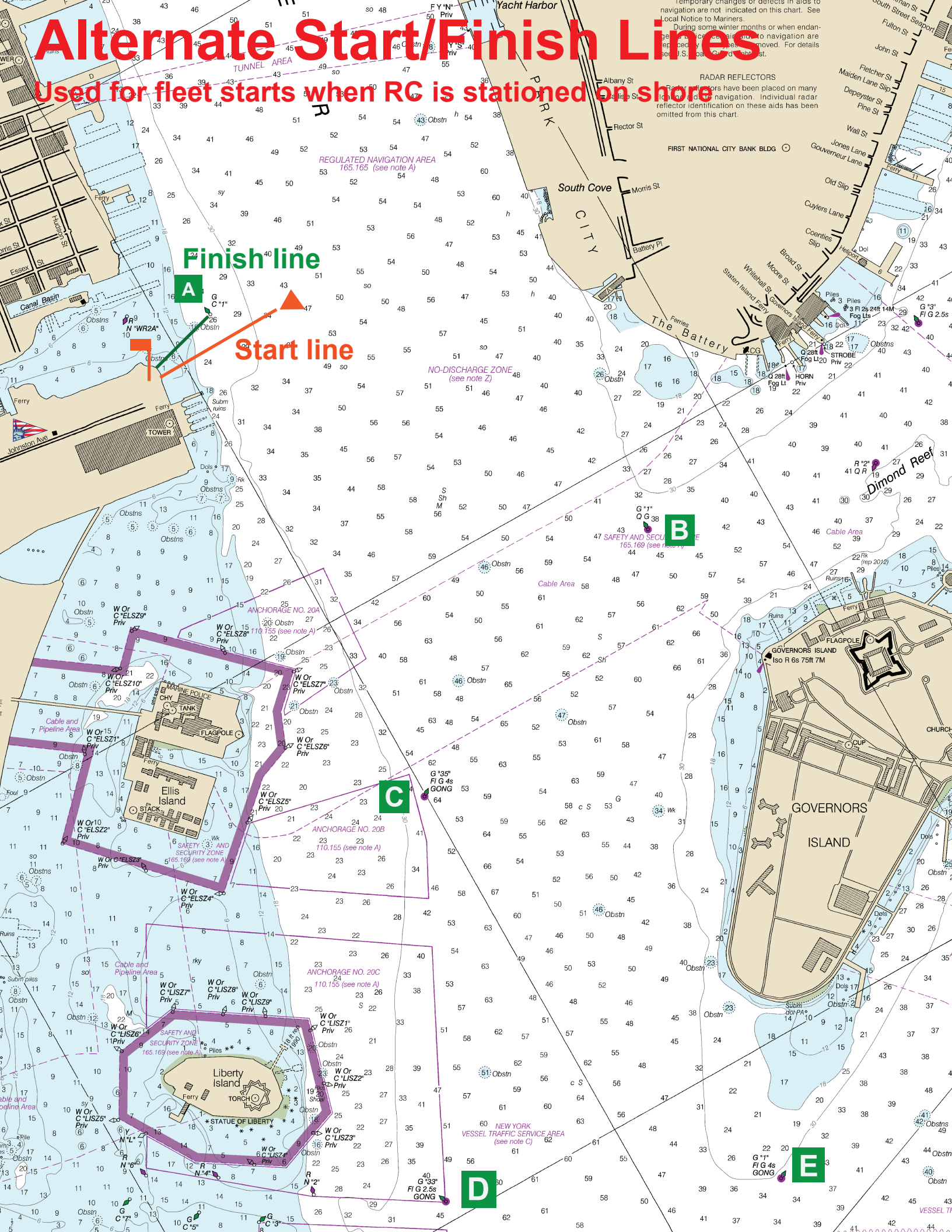


# Alternate Start/Finish Lines

Used for fleet starts when RC is stationed on shore



temporary changes or defects in aids to navigation are not indicated on this chart. See local Notices to Mariners.  
During some winter months or when endangered species are present, navigation is temporarily restricted. For details see U.S. Coast Guard Notices.

RADAR REFLECTORS  
Radar reflectors have been placed on many local aids to navigation. Individual radar reflector identification on these aids has been omitted from this chart.