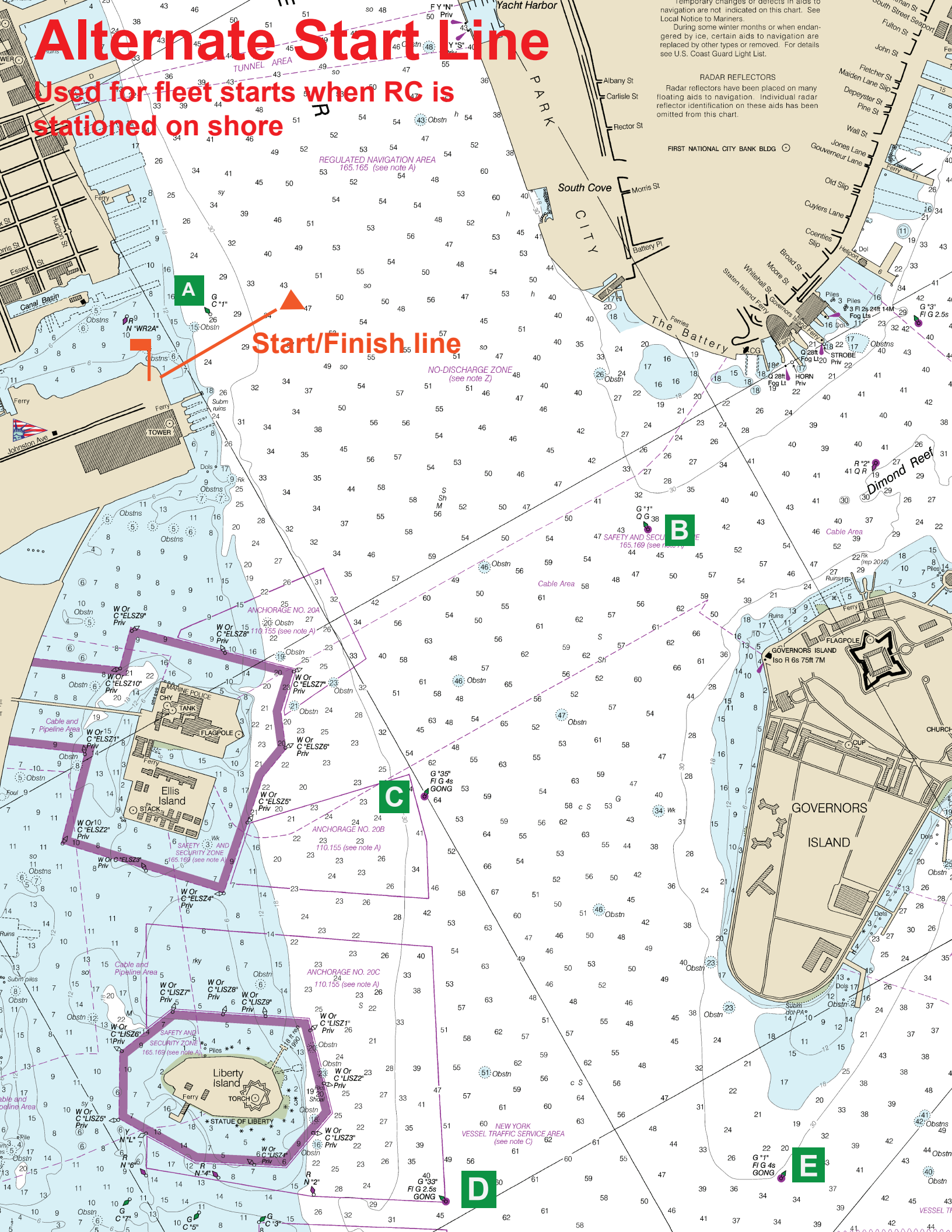


Alternate Start Line

Used for fleet starts when RC is stationed on shore

Start/Finish line



temporary changes or defects in aids to navigation are not indicated on this chart. See Local Notice to Mariners.
During some winter months or when endangered by ice, certain aids to navigation are replaced by other types or removed. For details see U.S. Coast Guard Light List.

RADAR REFLECTORS
Radar reflectors have been placed on many floating aids to navigation. Individual radar reflector identification on these aids has been omitted from this chart.

REGULATED NAVIGATION AREA
165.165 (see note A)

NO-DISCHARGE ZONE
(see note Z)

ANCHORAGE NO. 20A
110.155 (see note A)

ANCHORAGE NO. 20B
110.155 (see note A)

ANCHORAGE NO. 20C
110.155 (see note A)

ANCHORAGE NO. 20E
110.155 (see note A)

SAFETY AND SECURITY ZONE
165.169 (see note A)

NEW YORK VESSEL TRAFFIC SERVICE AREA
(see note C)

G*33" Fl G 2.5s GONG

G*15" Fl G 4s GONG

G*35" Fl G 4s GONG

G*20" Fl G 4s GONG

G*15" Fl G 4s GONG

G*10" Fl G 4s GONG

G*5" Fl G 4s GONG

G*3" Fl G 2.5s GONG

G*2" Fl G 2.5s GONG

G*1" Fl G 2.5s GONG