



# 2024 Pursuit of Happiness

Jackson Park & Burnham Park Yacht Clubs  
August 24-25, 2024



## SAILING INSTRUCTIONS (SIs) - AMENDMENT #1

- 1 **RACING AREAS:** Pages 16 and 17 of the Sailing Instructions are amended to change the following locations.

**Day 1 | Saturday August 24, 2024**

Finish Location                      41° 50.00' N 87° 34.00' W  
Approx. 90° T, 1.5 NM from 31st Street Harbor

**Day 2 | Sunday August 25, 2024**

Starting Area                        41° 50.00' N 87° 34.00' W  
Approx. 90° T, 1.5 NM from 31st Street Harbor

- 2 **COURSE:** The following courses may be used

2.1 For the race on **Saturday, August 24th**, the following courses may be used

**COURSE A (Short):** The total distance of this course is 7.5 N. Mi.

Mark	Approx. Location	Rounding	Approx. Course	Approx. Distance
Start	41° 52.80' N 87° 34.46' W	-	-	-
Four Mile Crib	41° 52.36' N 87° 32.70' W	To Starboard	107° T	1.4 N. Mi.
Clemson Shoal Bell Buoy "4"	41° 48.41' N 87° 32.08' W	To Starboard	173° T	4.0 N. Mi.
Finish	41° 50.00' N 87° 34.00' W	-	318° T	2.1 N. Mi.

**COURSE B (Long):** The total distance of this course is 13.2 N. Mi.

Mark	Approx. Location	Rounding	Approx. Course	Approx. Distance
Start	41° 52.80' N 87° 34.46' W	-	-	-
Four Mile Crib	41° 52.36' N 87° 32.70' W	To Starboard	107° T	1.4 N. Mi.
Clark Point Buoy "8"	41° 45.57' N 87° 31.74' W	To Starboard	174° T	6.8 N. Mi.
Clemson Shoal Bell Buoy "4"	41° 48.41' N 87° 32.08' W	To Port	355° T	2.9 N. Mi.
Finish	41° 50.00' N 87° 34.00' W	-	318° T	2.1 N. Mi.

2.2 For the race on **Sunday, August 25th**, the following courses may be used

**COURSE 1 (Short):** The total distance of this course is 7.7 N. Mi.

Mark	Approx. Location	Rounding	Approx. Course	Approx. Distance
Start	41° 50.00' N 87° 34.00' W	-	-	-
Four Mile Crib	41° 52.36' N 87° 32.70' W	To Port	022° T	2.6 N. Mi.
Carter H Harrison Crib	41° 55.00' N 87° 34.35' W	To Port	335° T	2.9 N. Mi.
Finish	41° 52.80' N 87° 34.46' W	-	182° T	2.2 N. Mi.

**COURSE 2 (Long):** The total distance of this course is 13.0 N. Mi.

Mark	Approx. Location	Rounding	Approx. Course	Approx. Distance
Start	41° 50.00' N 87° 34.00' W	-	-	-
Carter H Harrison Crib	41° 55.00' N 87° 34.35' W	To Starboard	337° T	5.0 N. Mi.
Four Mile Crib	41° 52.36' N 87° 32.70' W	To Port	155° T	2.9 N. Mi.
Carter H Harrison Crib	41° 55.00' N 87° 34.35' W	To Port	335° T	2.9 N. Mi.
Finish	41° 52.80' N 87° 34.46' W	-	182° T	2.2 N. Mi.

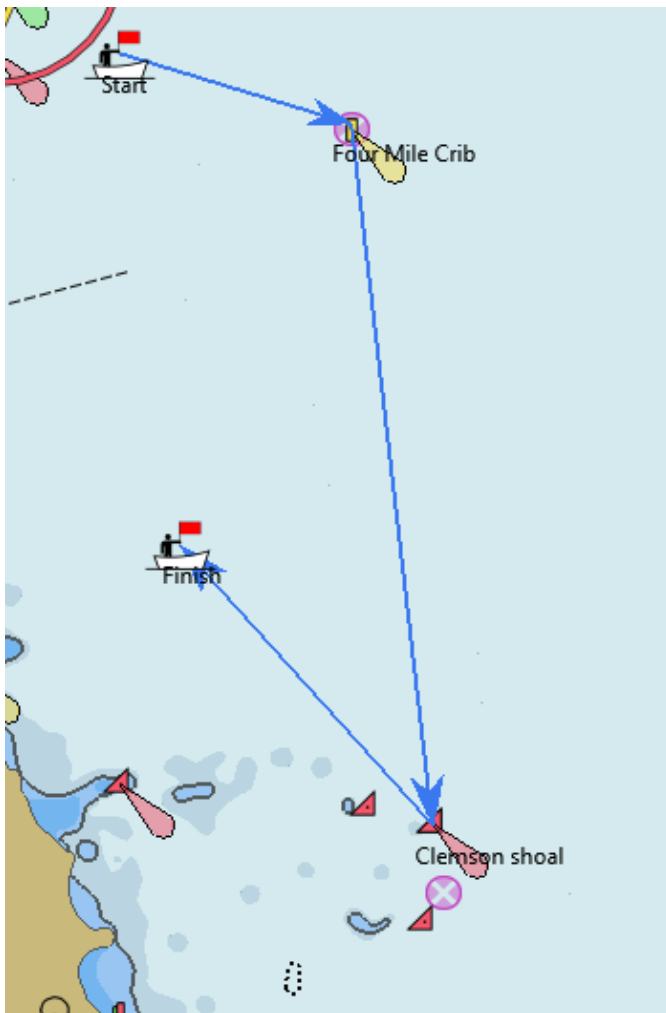
- 3 MARKS:** For the 68th Street crib, Four Mile crib, and Harrison-Dever crib, all guard marks for that crib are considered to be part of that mark for the course and must be left to the same side as the crib.
- 4 THE START** - Section 10 of the Sailing Instructions are amended to add and change the following.
- 4.1 The start line will be between a staff displaying an orange flag on the Race Committee signal boat and an orange or red floating mark, which should be left to port. The Race Committee signal boat should be left to starboard. This changes item 10.1 of the Sailing Instructions.
  - 4.2 Each yacht shall have a prescribed Starting Time corresponding to its MMPHRF TOD rating and calculated for the course distance. A starting sequence list for each course will be provided as a Sailing Instruction Amendment.
  - 4.3 Start times will be posted as the hour and minute for each competitor (H.MM). All times will be based on GPS synchronized time. The amendment will be published no later than 2200 hrs on August 23, 2024.
  - 4.4 The Race Committee will indicate which course will be sailed on a placard displayed on the Race Committee Signal Boat at the Starting Line prior to the first start time. Competitors should be aware of their start times for each course.
  - 4.5 Starting Times may be altered by postponement.

- 4.6 **A WARNING SIGNAL** will be displayed with one sound signal not less than five (5) minutes prior to the first start of the starting sequence or following a postponement. The warning signal shall be as follows:
- Flag "I" (India) – The starting sequence is active; each yacht shall start at its prescribed time.
- Flags "I" (India) over "P" (Papa) – The starting sequence is active following a postponement; each yacht must check the postponement time displayed by RC signal boat and adjust its Starting Time accordingly.
- 4.7 For the purposes of the rules, each yacht's STARTING SIGNAL shall be its Starting Time and its PREPARATORY SIGNAL shall be four (4) minutes prior to its Starting Time. No flags will be displayed for individual Starting or Preparatory Times.
- 4.8 The Race Committee will attempt to make a sound signal at the Starting Time of each yacht entered in the regatta. Failure to make an accurate sound signal shall not be grounds for redress. This changes RRS 62.1 (a).
- 4.9 After the warning signal for the first start, boats shall stay clear of the starting area until four (4) minutes before their scheduled
- 4.10 The "I" (India) Flag Rule, RRS 30.1 (around the ends), will be in effect for all starts.
- 4.11 The Race Committee will attempt to hail the sail numbers of OCS yachts. The order, timing and success of these hails shall not be grounds for redress. This changes RRS 62.1 (a)
- 4.12 The Race Committee may signal a postponement in accordance with RRS 27.3 (Flag AP) before or during the starting sequence. Postponements will apply only to yachts that have not yet started.
- 4.13 Postponements will be made in five (5) minute increments. Prior to resuming the sequence, the aggregate duration of all postponements will be displayed by the Race Committee Signal Boat in hours and minutes (H.MM)
- 5 THE FINISH** - Section 11.1 of the Sailing Instructions are amended to change the following.
- 5.1 The finish line will be between a staff displaying a blue flag on the Race Committee Signal Boat and a yellow floating mark, which should be left to port. The Race Committee Signal Boat should be left to starboard.
- 6 DOCKING:** Free docking will be available at 31st St. Harbor on Saturday night for all participants of the race. Please contact Jackie Stoll via text at 708-203-1718 if you need a slip.

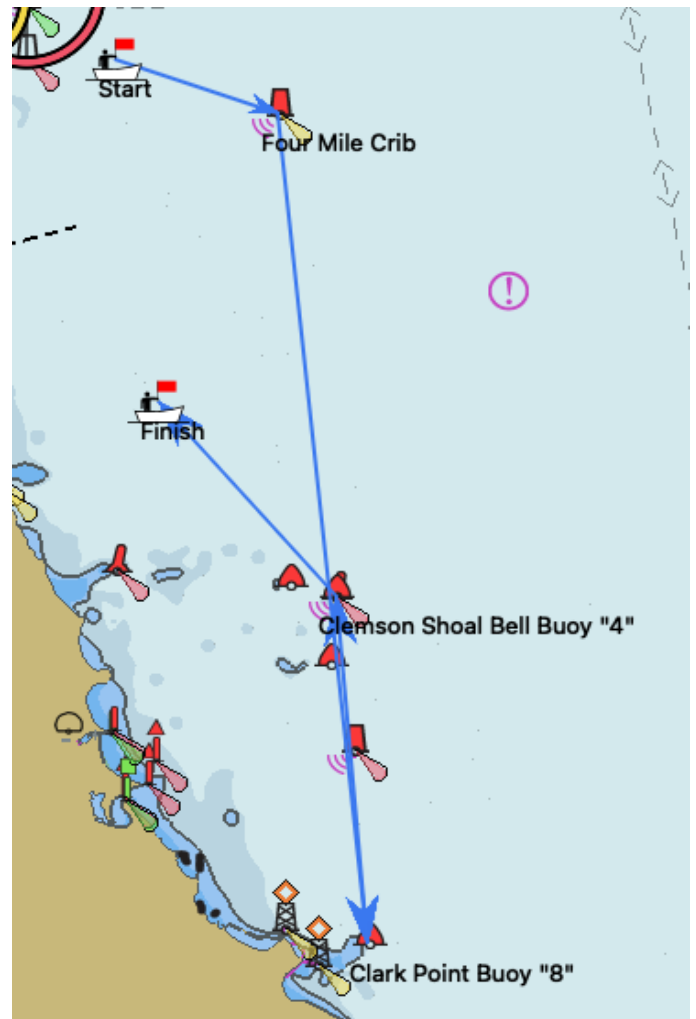
## APPROXIMATE COURSE DIAGRAMS

**NOTE:** THESE DIAGRAMS ARE NOT TO BE USED FOR NAVIGATIONAL PURPOSES

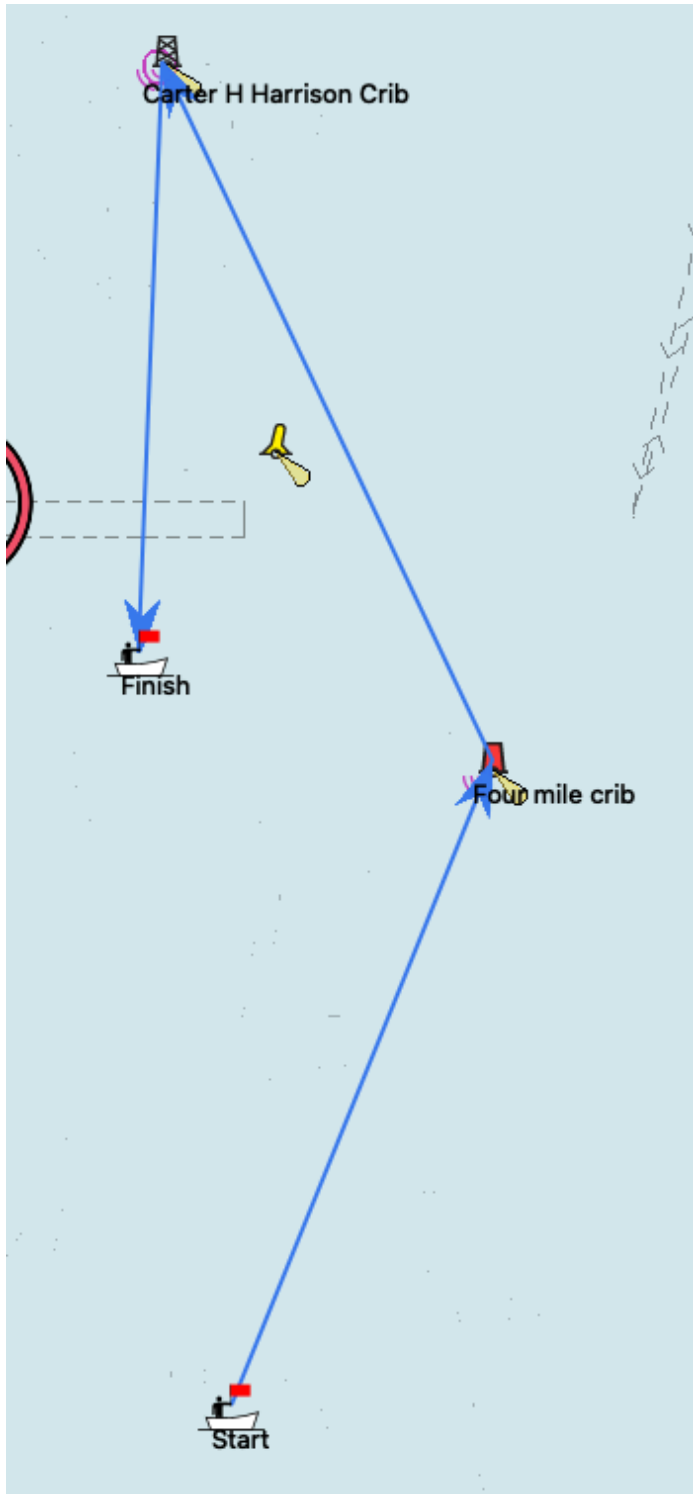
### COURSE A



### COURSE B



**COURSE 1**



**COURSE 2**

