

**NEWPORT YACHT CLUB**  
**2016 SUMMER SERIES**  
**July 5 – August 31, 2016**  
**SAILING INSTRUCTIONS**

**1. RULES**

- 1.1 Racing will be governed by the rules as defined in the Racing Rules of Sailing (RRS).
- 1.2 Rule 44.1 is changed so that the One-Turn Penalty replaces the Two-Turns Penalty. A boat that has accepted an Alternative Penalty and completed its turn must notify the Race Committee to that effect after finishing.
- 1.4 Rule 64.1(a) has been amended as follows: The penalty, if any, for infringement of a rule other than a rule of RRS Part 2 will be at the discretion of the Protest Committee and may be other than disqualification.

**2. SCHEDULE OF RACES**

- 2.1 The series will be conducted on Tuesday and Wednesday evenings. The scheduled time of the warning signal for the first race will be 1800 hours.

**3. NOTICES TO COMPETITORS and CHANGES TO THE SAILING INSTRUCTIONS**

- 3.1 Notices to competitors and changes to the sailing instructions will be posted on the Regatta bulletin board located at NYC.
- 3.2 Any changes to the Sailing Instructions (SIs) will be posted on the NYC bulletin board, and may be posted on the NYC web site at <http://www.newportyachtclub.org>. Or announced on VHF channel 73.

**4. RACE COMMITTEE SIGNALS**

**4.1 SIGNALS MADE ASHORE**

- 4.1.1 Signals made ashore will be hoisted on the flagstaff at NYC and broadcast on VHF Channel 73 at 1700 hours. An earlier broadcast may occur.
- 4.1.2 Code flags "N" over "A" coincident with 3 sound signals means "All racing is abandoned, no more racing today."
- 4.1.3 When flag AP (postponement) is displayed ashore "1 minute" is replaced with not less than 60 minutes" in the race signal AP.

**4.2 STARTING AREA SIGNALS**

- 4.2.1 Starting signals will be made in accordance with the RRS Rule 26 **(5 minute sequence)**.
- 4.2.2 The scheduled time for the warning signal for the first race each day is 1800 hours. Course(s) will be displayed on the starboard side of the Race Committee Signal Boat. Information for each class reads top to bottom below the designator numeral or class insignia for each class.
- 4.2.3 The starting/finishing line will be between the orange flag on the Race Committee signal boat and the port-end starting mark.
- 4.2.4 **Boats in a class whose warning signal has not been made shall keep clear of the starting area.**
- 4.2.5 A boat shall not start later than **4 minutes** after its starting signal.
- 4.2.6 Two or more boats of the same class must start within their time limit for a race to be

scored for that class.

4.2.7 At its discretion, the Race Committee may communicate with competitors using VHF Channel 73.

## 5. RACING CLASSES AND FLAGS

5.1 In order to avoid confusion, we request each one-design class to provide the Race Committee with a Class flag to be used as the warning signal for the start of that class. Otherwise, the warning signal for each class shall consist of the numeric pennants as described in the table below.

### Tuesday Night Circle

Class	Designator	Warning Signal
J/70	J	Pennant 1 or J/70 Class Flag
J/22 (SN Spinnaker)	J22	Pennant 3 or J22 Class Flag
Ensign	*E*	Pennant 4 or Ensign Class Flag
S Boats	S	Pennant 5 or S Boat Class Flag

### Wednesday Night Circle

Class	Warning Signal	PHRF RATING
Multihulls	Pennant 4	N/A
PHRF Class I (Spinnaker)	Pennant 1	Spinnaker
PHRF Class II	Pennant 2	Non-spinnaker Below 190
PHRF Class III	Pennant 3	Non-spinnaker 190 or Above
J/22 (SN Non-Spinnaker)	J22	N/A
Ensign	*E*	N/A

The pennant number does NOT indicate the order of starts, which may be changed by the Race Committee by hailing boats prior to the hoisting of the first warning signal. Other classes eligible for a start will be assigned a designator, a flag and a position in the starting sequence by the Race Committee and posted on the NYC bulletin board, or announced on channel 73 or by hailing the competitors.

## 6 STARTING SEQUENCE

6.1 The starting sequence will follow RRS 26 and is provided below. Times shall be taken from the visual signals; the absence of a sound signal shall be disregarded, and is not grounds for redress. Class flags indicate the next class to start.

Signal	Flag and Sound	Minutes Before Starting Signal
Warning	Class Flag, 1 sound	5
Preparatory	Code Flag "P", 1 sound	4
Prep Down	Prep Flag removed, 1 long sound	1
Start	Class flag removed, 1 sound	0

6.2 Each class start is independent of another unless indicated as below. A short delay

may take place between class start and the ensuing warning signal. However, it is the intent of the Race Committee to conduct rolling starts, whereby the start of one class will be concurrent with the warning for the next class, including any class restarting as a result of a general recall (see section 1, Rules, changes to Rule 29.2). The Race Committee may warn the fleet of rolling starts; failure to do so is not grounds for redress.

- 6.3 Two or more classes may be started at the same time. Multiple class flags will be made as the warning signal in this case. Always observe class flags.

## 7. RACING AREAS

- 7.1 Racing will be held on the Southern East Passage area of Narragansett Bay. (see Addendum A)
- 7.2 The starting area will generally be in the vicinity west of Goat Island and north of Fort Adams.

## 8. THE COURSES

- 8.1 The courses may be selected from the current South Bay course chart.
- 8.2 SPECIAL COURSES: The diagrams in Attachment B show alternate courses, including the approximate angles between legs, the order in which marks are to be passed, and the side on which each mark is to be left.
- 8.3 **Once a boat has started properly, she shall not sail through the start/finish line other than to finish unless the start/finish mark is also a mark of the course.**
- 8.4 See Addendum C for descriptions of the Signal Boat Course Board system

## 9. MARKS

- 9.1 Marks used will be a combination of government, Narragansett Bay Special Race Marks from the current edition of the South Bay Racing Chart and drop marks. The course designator for each class will be posted under the class designator on the starboard side of the signal boat. Round marks in the order listed. Leave each mark on the side indicated by the letter following the mark as indicated on the South Bay Chart (p = port, s = starboard) or the course description.

## 10. AREAS THAT ARE OBSTRUCTIONS

- 10.1 The following areas are designated as obstructions: the area of Dumplings or between those rocks and Jamestown shore; the rock near Fort Wetherill and the Jamestown shore; Citing Rock east of Rose Island; and Rose Island.
- 10.2 Competitors shall not sail between Rose Island and the Newport Bridge.
- 10.3 **Competitors are to pass under the Newport (Pell) Bridge through the center span only in order to accommodate the ongoing painting project. This instruction may be modified during the season.**

## 11. THE START

- 11.1 The starting line will be between the orange flag displayed on the signal boat at the starboard end and the course side of the port-end orange starting mark.
- 11.2 Boats starting later than four (4) minutes after their starting signal will be scored "Did not Start" and will be scored according to RSS Appendix A (A4.2 and A5).
- 11.3 The RC reserves the option to run additional races. To indicate racing, code flag "R"

(yellow cross on red square) will be displayed on the signal boat when the first boat in a class finishes. A class designator posted on the course board will indicate an additional race for that class.

## **12. THE FINISH**

- 12.1 The finish line will be between the orange flag displayed on the signal boat and the orange starting mark. When a course is shortened (code flag "S"), the finish will be between an orange flag on the signal boat and the nearby mark.

## **13. TIME LIMIT**

- 13.1 The time limit for all classes is 30 minutes after sunset as published in Eldridge.  
13.2 Any boat that finishes more than 30 minutes after the first boat in its class that sails the course and finishes, or 30 minutes after sunset, whichever comes first, will be scored DNF without a hearing. This changes rules A4, A5, A9 and 63.1.

## **14. PROTESTS**

- 14.1 A protesting boat must comply with RRS 61.1 and must notify the Race Committee of their intent to protest upon finishing the race in which the incident occurred.  
14.2 Protests shall be filed at NYC by 9:00 PM on the day after the race. Protest forms are available at Newport Yacht Club or on the US Sailing website. Protestors may deposit completed forms in the Regatta Committee box located in the hallway on the first floor of the Newport Yacht Club or email them to: [Office@NewportYachtClub.org](mailto:Office@NewportYachtClub.org).

## **15. SCORING**

- 15.1 Races will be scored using the low point system.  
15.2 Each yacht entered in a series shall be scored for each race started by the Race Committee and not subsequently abandoned with the exception that when more than three races are completed during a single day's racing only the last three races will be scored. All other races will be considered practice races and will not count towards the day's or the season's total scoring.  
15.3 There will be one throwout for every four races completed and scored. A DNC (Did Not Compete) is an allowable throwout.  
15.4 Two members from a given boat's normal skipper/crew will assist the Race Committee in conducting races. The boat providing assistance will be awarded Average Points for the series that they participate in, replacing their worst score, if the boat does not race in their series. Limit once per series, per boat. Boats failing to participate in assisting the Race Committee will receive a DNE for the last race that they participate in, which cannot be discarded.  
15.5 Unregistered/unpaid boats will not be scored.  
15.6 All boats will be scored based on their registered sail number, or, in the case of the J/22 class, the registered Team Name.

## **16. SPECIAL INSTRUCTIONS**

- 16.1 CHECKING IN - Each boat shall sail by the Race Committee boat before their preparatory signal to hail her sail number, the class in which she will race, and her Team Name where applicable. Each boat shall receive acknowledgement from the Race Committee.  
16.2 WITHDRAWAL - Boats withdrawing from a race shall inform the Race Committee as

soon as possible, either directly or on VHF Channel 73. Any yacht unable to contact the RC directly shall report its withdrawal to the NYC Dock Office (Tel: 401-846-9410) and ask to have the information relayed to the Race Committee. **Note: This is mandatory. Failure to notify will result in a DNC for that evening's race(s).**

- 16.3 **For all children less than 13 years of age, USCG and NYC require that they wear a USCG approved Personal Floatation Device whenever they are aboard a boat unless they are below decks or in an enclosed cabin.**

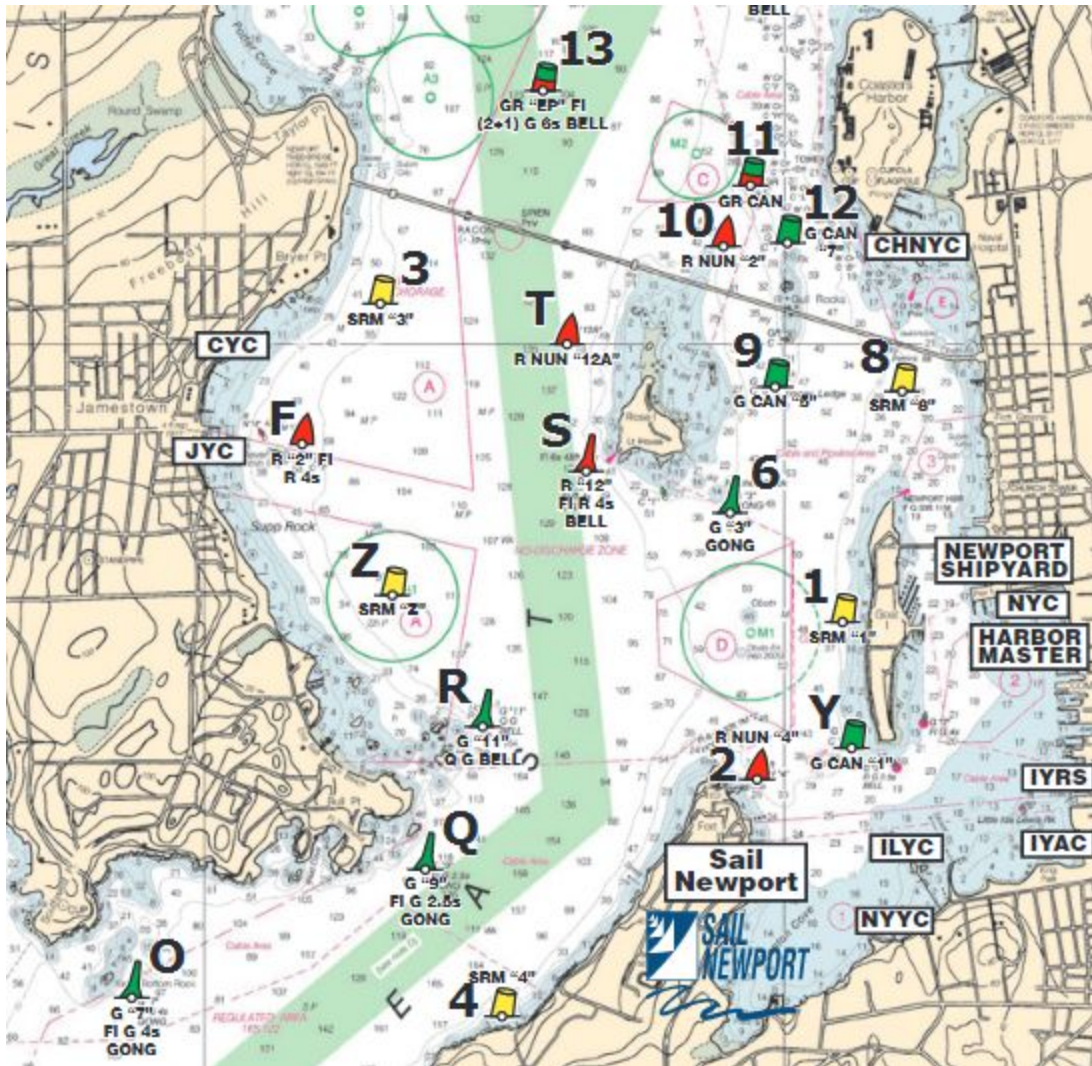
**17. DISCLAIMER OF LIABILITY**

- 17.1 Sailing is an activity that carries with it an inherent risk of damage or injury. Competitors participate in this series entirely at their own risk and are reminded to adhere to RRS 4, Decision to Race.

## Addendum A

### The Sailing Area

No race course will be used that requires passage under the Newport Bridge for the Sail Newport J/22 Classes.



- R. Green "11" Q G Bell – E. of The Dumplings
- S. Red "12" FI R Bell – S.W. of Rose Island
- T. Red Nun "12A" – N.W. of Rose Island
- V. Green "17" Q G – E. of Gould Island
- X. Red "14" FI R Bell – N.W. of Coasters Harbor
- Y. Green Can "1" – S.W. of Goat Island
- Z. Special Race Mark\* – N.W. of The Dumplings
- 1. Special Race Mark\* – W. of Goat Island
- 2. Red Nun "4" – E. of Fort Adams
- 3. Special Race Mark\* – E. of Conanicut YC
- 4. Special Race Mark\* – N.W. of Hammersmith Fa
- 6. Green "3" Gong – S.E. of Rose Island
- 8. Special Race Mark\* – N. of Goat Island
- 9. Green Can "5" – N.E. of Rose Island

## Addendum B

### Course Illustrations

Shown here are diagrams of course shapes. The boat's track is represented by a continuous line so that each diagram can describe courses with different numbers of laps. It is the intention of the Race Committee to start all races in the direction of the windward mark, the first mark of the course.

The Course Designation shall be "WL" followed by a numeral, for example; WL3

WL    windward/leeward  
      start leeward

WL    windward/leeward  
      start middle

WL2 = start-1-finish

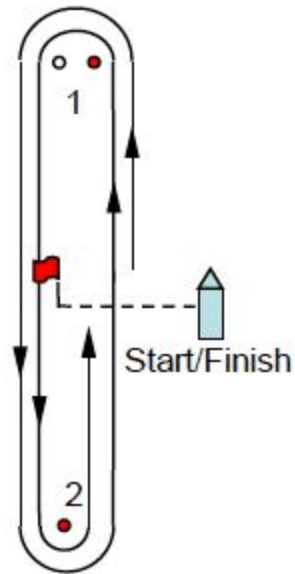
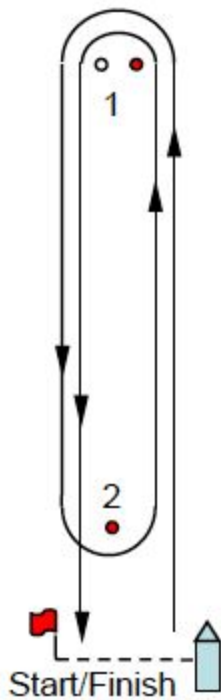
WL3 = start-1-2-finish

WL4 = start-1-2-1-finish

WL5 = start-1-2-1-2-finish

WL6 = start-1-2-1-2-1-finish

WL7 = start-1-2-1-2-1-2-finish



## Addendum C

### Course Board Description

The Race Committee Signal Boat uses a Row and Column system with inserted boards to display courses for the various classes.

The top row will consist of the class indication, either a numeral or a class symbol.

The second row and third row will consist of the course.

The third row will consist of the bearing to the weather mark when applicable.

The fourth row will consist of the distance of the course when applicable.

When WL series courses are used (See Addendum B) drop marks and/or Special Race Marks will be used for Mark 1 and Mark 2.

Mark 1 will be indicated to the right of the Bearing indication.

Mark 2 will be indicated to the right of the Distance indication.

A black circle “●” will indicate the use of a drop mark.

A numeral, such as “8”, or a letter, such as “Q” will indicate the use of a specific Narragansett Bay Special Race Mark.

#### Example Course Board Displays

Example Courses	All Drop Marks
Class Number or Class Pennant	J/22
Course	WL
Course	3
Bearing	215
Distance	0.6

Only Drop Marks



Example Courses	Combination Drop Mark and Special Race Mark	Combination Drop Mark and Special Race Mark	
Class Number or Class Pennant	J/22		
Course	WL		
Course	3		
Bearing	215	●	< Mark next to Bearing is the windward mark type. Black circle = Drop Mark
Distance	0.6	8	< Mark next to Distance is the leeward mark type. A number indicates a specific Special Race Mark

Combination Drop Marks and Special Race Marks

Example Courses	Narragansett Bay Course
Class Number or Class Pennant	J/22
Course	8
Course	0

Narragansett Bay Courses

Example Courses	Drop Marks Only	Drop Marks and Special Race Marks		Narragansett Bay Course	Narragansett Bay Course
Class Number or Class Pennant	J/22	J/22		Ensign	PHRF 1
Course	WL	WL		8	8
Course	3	3		0	6
Bearing	215	215	●		
Distance	0.6	0.6	8		

Multiple Classes and Courses  
**END OF SAILING INSTRUCTIONS**