



Indian Harbor Yacht Club 14th Annual Classic Yacht Regatta

September 14-15, 2024
Indian Harbor Yacht Club
Organizing Authority

As of September 13th, 2024 16:30

SAILING INSTRUCTIONS

1. FLEETS

- 1.1. The IHYC Classic Yacht Regatta is composed of 4 Divisions. (The Divisions below change NOR 4):
 - 1.1.1. Division 1: "Classics - Long Course" - classic yachts racing under a valid 2024 CRF Certificate and the Classic Yachts Challenge Series rules
 - 1.1.2. Division 2: "Classics - Short Course" - Generally Classics under 30' and Catboats racing under a valid 2024 CRF Certificate and the Classic Yachts Challenge Series rules
 - 1.1.3. Division 3: "Near Classics" - as defined by the NOR and racing under a valid 2024 PHRF Certificate
 - 1.1.4. Division 4: "One-Designs" - Shields Class

2. WIND LIMITS

Races will not be started when the Race Committee deems that winds are consistently (sustained) at or above 23 knots or gusting to 25 knots and above, and winds under 4 knots. If a race has been started and the wind increases to 25 knots and above or falls below 4 knots, it remains at the discretion of the Race Committee whether to abandon the race. A Skipper always has the discretion to withdraw if they deem the conditions unsafe for their crew or their vessel.

3. RULES

- 3.1. The regatta will be governed by:
 - 3.1.1. The rules as defined in the Racing Rules of Sailing.
 - 3.1.2. The 2024 Classic Yachts Challenge Series (CYCS) Regulations.
- 3.2. For the purpose of rules 14 and 44.1(b), any contact between boats shall be considered serious damage. This changes rules Part 2 Preamble, 36(b), 44.1(b), 60.3(a)(1) and 61.1(a)(4).
- 3.3. All yachts (boats) shall observe the change of the definition of "Keep Clear" and rules changes noted in NOR 2 Rules.



- 3.4. [DP] The penalty for a boat that has broken a rule, other than a part 2 rule, shall be at the discretion of the protest committee and may be different than disqualification. This changes rule 64.1 (A).
- 3.5. FOR OFFSHORE/NAVIGATORS COURSE ONLY: Yachts deemed by Race Committee On Course Side (OCS) before their designated start time must continue sailing the course, shall not clear themselves and will be given a 600 second penalty. This in accordance with NOR Amendment 1 and World Sailing Test Rule DR21-01. This does not apply to Saturday's Inshore/One Design Course, who will start in accordance with RRS 26.
- 3.6. Appendix T, rule T1, Post Race Penalties, will be in effect.
- 3.7. Yachts sailing on the Offshore / Navigation courses may use modern navigation technology.
- 3.8. All competitors are required to use SAP's phone application "[Sail Insights](#)", a sailing GPS tracking app enabling Race Committee and spectators to track yachts' progress around the course defined by the Race Committee. See Addendum 6 for QR Code

4. NOTICES TO COMPETITORS

- 4.1. Notices will be posted online at <https://yachtscoring.com/emenu.cfm?eID=16781>.
- 4.2. On the water, the race committee will monitor and communicate with competitors on VHF radio channel 65 for the Offshore/Navigators. The Race Committee will monitor and communicate with competitors on Channel 9 for the Inshore/One-Design Course.
- 4.3. Failure of such information to be given or received shall not be grounds for redress. This changes rule 62.1(a).

5. NOTICES TO SPECTATORS

- 5.1. Spectator yachts and boats shall keep clear of any starting area and course marks. This is defined as a 0.1nm radius around any signal boat on station, start or finish pin, and mark on the course.

6. CHANGES TO SAILING INSTRUCTIONS

Any changes to the sailing instructions will be posted before 0900 on the day the change takes effect.

7. SIGNALS MADE ASHORE

- 7.1. Signals made ashore will be displayed on the main flagpole at IHYC.
- 7.2. When code flag "AP" is displayed ashore, "1 minute" is replaced with "not less than 60 minutes" in the race signal "AP".
- 7.3. When Code Flag Alpha is displayed, it refers to Divisions 1, 2 & 3. When Code Flag Bravo, it refers to Division 4.

8. SCHEDULE



Friday, September 13	1800 – 2100	Boat arrival, check-in (South Patio), Boat Show and Welcome Party (complimentary beer and snacks) Ticketed buffet dinner
Saturday, September 14	0830 - 0930	Check-in continued (Ballroom)
	0900	Mandatory Competitors' Meeting (Ballroom)
	1000	Harbor Start
	1040	First warning
	1800	Dinner, Award from Classics pursuit race & Inshore
Sunday, September 15	0900	Harbor Start
	1010	First warning
	1500 (approx)	Awards Ceremony with Snacks as soon as practical

9. CLASS FLAGS

- 9.1. Class assignments and corresponding class flags will be shown on the final scratch sheet, which will be available by the competitors meeting and online at www.yachtscoring.com. Owners/skippers are reminded to use the final scratch sheet as any preliminary scratch sheet is subject to change.
- 9.2. Flags shall be flown from the permanent backstay approximately six feet above the deck. Yachts with no permanent backstay shall fly their class flag from another conspicuous location.

10. RACING AREAS

- 10.1. There will be two race areas: Offshore/Navigators and Inshore/One-Design.
- 10.2. The racing area will be defined as:
 - 10.2.1. **Offshore/Navigators:** Western Long Island Sound
 - 10.2.1.1. Divisions 1, 2, & 3 will sail the Offshore/Navigators area on Saturday AND Sunday
 - 10.2.1.2. Division 4 will sail the Offshore/Navigators area on Sunday only
 - 10.2.2. **Inshore/One-Design:** Waters within Captain Harbor
 - 10.2.2.1. Division 4 will sail the Inshore/One-Design area on Saturday ONLY
- 10.3. Addendum 3 - Racing Area shows three red exclusion zones that shall not be entered while racing.
 - 10.3.1. The areas identified as exclusion zones are deemed to be continuing obstructions.
 - 10.3.2. The exclusion zones do not include the area immediately adjacent to race mark "A" (Gong G"1" E of Little Captain) to allow for a seamanlike rounding when "A" is designated as a rounding mark.



11. COURSES AND MARKS

- 11.1. For Offshore/Navigators: All racing will be navigator-style around government marks.
 - 11.1.1. A short course will be given to Divisions 2 & 3 .
 - 11.1.2. Short and long course assignments for both days will be given on the final scratch sheet.
 - 11.1.3. On Sunday, all yachts will sail on the Offshore/Navigators Area.
 - 11.1.3.1. Division 4 will be given a course from the starting area, a determined mark, and a finish area off Larchmont Breakwater. The Finish boat may be Larchmont Yacht Club's *Sachem*.
- 11.2. For Inshore/One-Design:
 - 11.2.1. Courses will be traditional Windward Leewards, using single color Tetrahedron marks for Windward mark, Leeward Mark and/or gates, and a colored inflatable for a windward offset mark.
 - 11.2.2. See Addendum 5
- 11.3. Offshore/Navigators Marks to be used on the course are described in Addendum 1 - Racing Mark List.
 - 11.3.1. A list of courses is given in Addendum 2 - Course List. Each course is designated by a number.
 - 11.3.2. Course distances are determined by the race committee and shall not be subject to redress.
 - 11.3.3. No later than five minutes before the first warning signal, the race committee will designate the course for each Division on the starting vessel's Course Board.

12. PRE-START IDENTIFICATION AND RETIREMENT

- 12.1. Prior to the first warning signal, all competing yachts shall check in on Starboard behind the stern of race committee on the yachts designated race area, and shall also announce how many souls are aboard.
 - 12.1.1. Yachts over 60 feet will hail Race Committee on VHF channel 65
- 12.2. A yacht retiring from an Offshore/Navigators race shall inform the race committee on the VHF channel 65, as well as email sailing@indianharboryc.com as soon as safely possible.

13. THE START

- 13.1. Offshore/Navigators Area
 - 13.1.1. The starting vessel, *Sachem*, intends to anchor 0.7NM due south of Flack Neck Point (Todd's Point) at the approximate coordinates: 40°59.08'N, 73°35.47'W.
 - 13.1.2. Start lines will be between the course side of a nearby Colored Tetrahedron and a staff displaying a colored flag.
 - 13.1.3. *Sachem* may have a "keep away" tetrahedron or inflatable mark attached at its transom. See RRS 31.
 - 13.1.4. Races will be pursuit style starts and indicated on the starting sheet, corresponding to the course assigned for that division, that day. (See NOR Amendment 1).



- 13.1.5. The race committee will make regular courtesy announcements over VHF channel 65 to remind competitors of their schedule pursuit start time. There will be no visual signals made other than code flag "X" in the event a boat or boats is OCS.
- 13.1.6. Boats with more than 10 minutes before their start shall keep clear of the starting area.
- 13.1.7. OCS yachts shall not return to the starting line to clear themselves and must continue sailing the course. Please see SI 3.5
- 13.1.8. SI 13.1 applies to Divisions 1, 2 & 3 on Saturday, and All Divisions on Sunday.
- 13.2. Inshore/One-Design: The starting line will be between the signal boat and a colored tetrahedron on Saturday.
 - 13.2.1. Starts for the Inshore/One Design course will be run in accordance with RRS 26.
 - 13.2.2. The race committee shall hail boats that it identifies as OCS on the designated VHF Channel . A failure to hear or receive the order in which hails are made will not be grounds for redress.

14. THE FINISH

- 14.1. Offshore/Navigators: The finish line for all boats will be between a tetrahedron and a staff flying a colored flag on the signal boat anchored at approximate coordinates: 40°59.08'N, 73°35.47'W. (Appox. 1/4/mile so. of green Gong 1)
- 14.2. Inshore/One-Design: The finish line shall be between a blue flag and an inflated finish mark
- 14.3. The signal boat will display a race committee flag and an IHYC burgee.
- 14.4. On Sunday: Division 4 shall finish between Larchmont Yacht Club's Finish Vessel and the Larchmont Breakwater.

15. TIME LIMIT

The time limit for all boats is 1700. Boats failing to finish within the time limit, and not subsequently retiring, penalized or given redress, will be scored Time Limit Expired (TLE) without a hearing. A boat scored TLE shall be scored points for the finishing place two more than the points scored by the last boat sailing the same course.that finished within the time limit. This changes RRS 35, A5.1, A5.2 and A10.

16. HEARING REQUESTS

- 16.1. Boats intending to protest must conspicuously display a red protest flag at the first reasonable opportunity following the incident(s) being protested.
- 16.2. Boats intending to protest shall notify the race committee of its intent to protest along with the name or sail number of the boat she intends to protest via VHF channel 65 after crossing the finish line or upon retiring.
- 16.3. The protest time limit is one hour after the last boat finishes the last race of the day, the race committee signals no more racing today, or the signal boat docking time, whichever is later. The time will be posted on the official notice board in the clubhouse lobby.
- 16.4. Protests shall be delivered to the IHYC Front Desk within the protest time limit. Protests forms will be available at the Front Desk.



- 16.5. Notices will be posted as soon as possible after the protest time limit to inform competitors of hearings in which they are parties or named as witnesses. Such notices will include the hearing location and expected hearing start time.

17. SCORING

- 17.1. Absent a shortening of the course, yachts will be scored in the order in which they finish within their divisions.
- 17.1.1. Prizes will be awarded to cumulative finish results.
- 17.2. Ties will be broken according to RRS rule A8.2.
- 17.3. One race constitutes a series with all races to count.

18. PRIZES

- 18.1. Perpetual Prizes will be awarded per their deed and as determined by the OA.
- 18.1.1. The Frank Bowne Jones Founders Cup
- 18.1.2. The Spartan Trophy
- 18.1.3. The Victory Trophy
- 18.1.4. The Betty Foulk One-Design Trophy
- 18.2. An award may be given to place finishes to all divisions Saturday and Sunday
- 18.3. Additional prizes may be awarded as determined by the OA and CYOA

19. RISK STATEMENT

RRS 3 states: 'The responsibility for a boat's decision to participate in a race or to continue to race is hers alone.' By participating in this event each competitor agrees and acknowledges that sailing is a potentially dangerous activity with inherent risks. These risks include strong winds and rough seas, sudden changes in weather, failure of equipment, boat handling errors, poor seamanship by other boats, loss of balance on an unstable platform and fatigue resulting in increased risk of injury. Inherent in the sport of sailing is the risk of permanent, catastrophic injury or death by drowning, trauma, hypothermia or other causes.

An Owner, Responsible Representatives and/or Captain of each yacht or boat competing in this event shall submit a signed Waiver, available at check-in and via this link:

<https://forms.gle/d7SopWEUPVypFCBLA>

20. CONTACTS



Indian Harbor Yacht Club
710 Steamboat Road
Greenwich CT, 06830

203-869-2484

Sailing@indianharboryc.com

regatta@indianharboryc.com

VHF 68

Lat. 41° 00' 40"N Lon. 73° 37' 23"W

Principal Race Officer:	Commodore Raymond Griffin
Inshore/One-Design PRO:	Peter Gerard
Event Co-Chair:	Lars Forsberg S/Y SPIRIT



Addendum 1: Mark List

Mark	Description of Mark	Approx. Location
A	Little Captain Island East Reef Lighted Gong Buoy 1	0.8 NM E off Little Captain Island
B	Mid-Sound Lighted Bell Buoy 32A	2.5NM SSE off Greenwich Point
C	The Cows Lighted Bell Buoy 32	0.9 NM S off Shippan Point
D	Cable and Anchor Reef Lighted Bell Buoy 28C	3.4 NM N off Eatons Neck
E	Eaton Neck Lump Buoy E	1.5 NM N off Eatons Neck
F	Lloyd Point Shoal Lighted Buoy 15	0.9 NM NNE off Lloyd Point
G	Centre Island Reef Buoy 17	1.4 NM N off Rocky Point
H	Oak Neck Point Buoy 19	0.6 NM N off Oak Neck Point
J	Matinecock Point Shoal Lighted Gong Buoy 21	0.3 NM N off Matinecock Point
K	Milton Point Buoy 40A	0.3 NM SSE off Peningo Neck
L	Bluefish Shoal Bell Buoy 36	1.0 NM SW off Great Captain
M	Great Captain Island West Reef Buoy 2	0.2 NM SSW off Great Captain Island
N	Captain Harbor Flat Neck Point Shoal Buoy 2	0.4 NM ENE off Great Captain Island
W	UCONN Western LIS Research Lighted Buoy	2.2 NM S of N2
Z	Larchmont Breakwater/Larchmont Harbor Light 2	0.3nm SE of Edgewater Pt/Satan's Toe

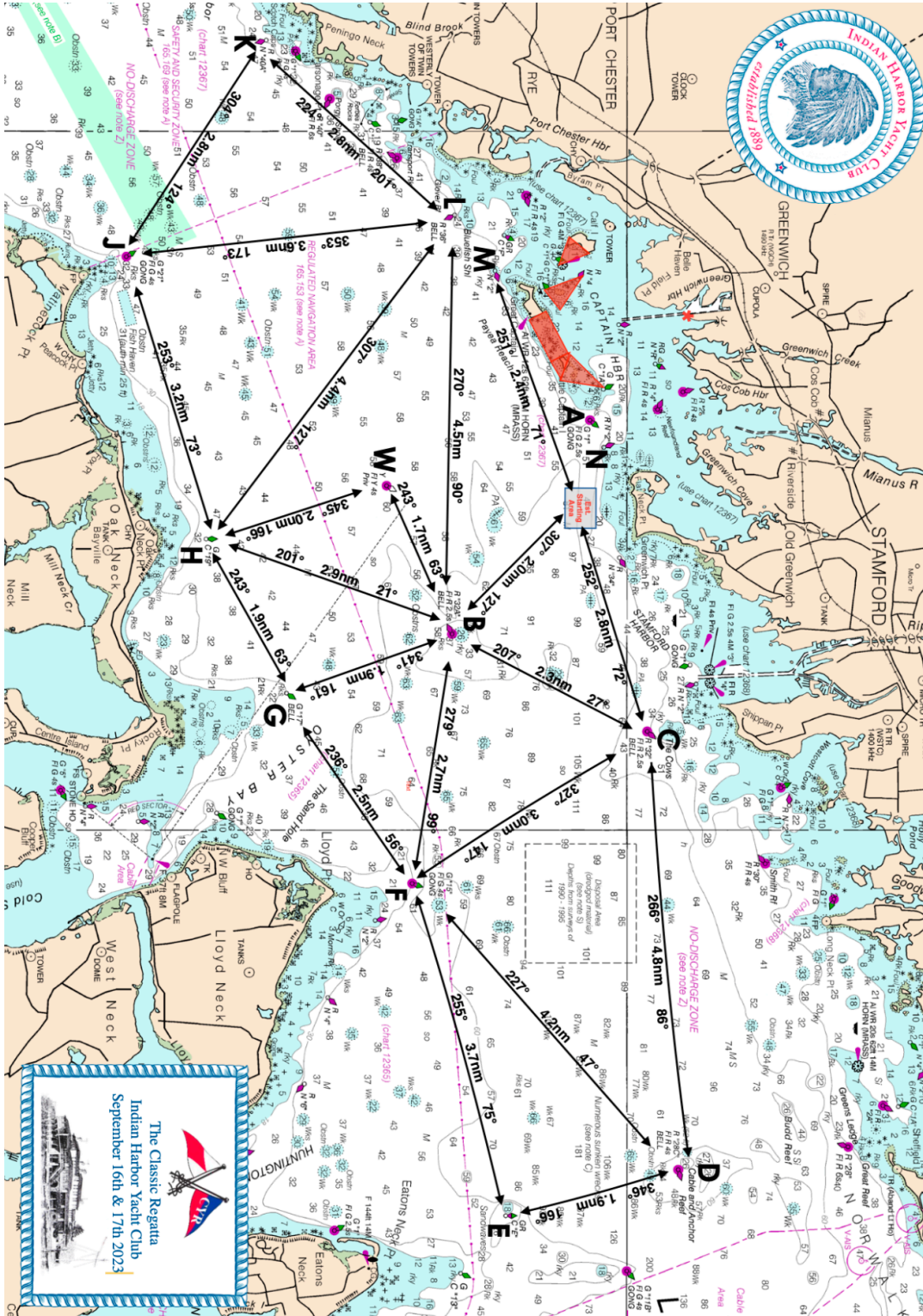


Addendum 2 - Course List

Course	Rounding Order of Marks	Total Distance (NM)
1	Ds Js	24.9
2	Ds Gs	18
3	Cs Bs As Cs Bs	15.5
4	Cs Gs Bp	10.7
5	Cs Bs	7.1
6	Bp	4
7	Cs Fs	10.4
8	Bs Gs	7.7
9	Bp Ap Mp Bp	12.5
10	Fp Cp	11.3
11	Cs Bs As Cs	14
12	Mp Cp	10.4
13	Cs	5.6
14	Bp Cp Ap Bp Cp	15.5
15	Gp Cp	11.4
16	Gp Ap Bp	10.3
17	Fs Bs	9.3
■	■	■
19	Cs Ap Bp	10.9
20	Ms	4.8
21	Hp Fp Gs Bp	14.6
22	Bp Cp	7.1
23	Kp Jp Bp	16
24	Jp Dp	24.9
25	Es FS	16.2
26	Wp Gp Fs Ep	14.2
27	Lp Kp Hp Fp	20.4
28	Lp Kp Hp	15.3
29	Ws Finish at Zs	9.2



Addendum 3 - Offshore/Navigators Racing Area (To Be Printed + Laminated)





Scratch Sheet as of 9/13/2024



Indian Harbor Yacht Club
IHYC Classic Yacht Regatta
 September 13-15, 2024

Yacht Scoring Event Administration
IHYC Classic Yacht Regatta
Scratch Sheet

Bow Sail Number	Yacht Name	Owner/Skipper	Yacht Club	Home Port	Yacht Type	Length	Rating
Racing Area: Pursuit Course							
Division: CRF MkII							
Classic Division (CRF)							CRF / Sec/Nm
1.	USA 993	Abigail	Jesse Terry	NYYC	New York, NY, USA	Alden	39 18.6 / 195
2.	USA 20	Allegro	William Simmons	Horseshoe Harbor Yacht Club	Larchmont, NY, USA	Herreshoff S Class	27'6 17.6 / 209
3.	US 46	America II	New York Harbor Sailing Foundation	Manhattan Yacht Club	Jersey City, NJ, USA	12 Metre	66 43.7 / 21
4.	USA42	America II	New York Harbor Sailing Foundation	Manhattan Yacht Club	Jersey City, NJ, USA	12 Metre	68 43.7 / 21
5.	2200	Brigadoon	Richard Jaffe Robert Morton	NYYC	Middletown, RI, USA	Owens Cutter	40 21.6 / 159
6.	232	Delta House	Greg Evans	Indian Harbor	West Palm Beach, FL, USA	Hodgdon	98 61.9 / -31
7.	USA 1937	Golden-Eye	Michael Emmert	Sea Cliff YC	Glen Head, NY, USA	Rhodes	41'10 18.5 / 196
8.	06 can 6	Ibis	Elith Larsen	NYAC Yacht Club	Pelham, NY, USA	IOD	33 17.4 / 212
9.	71	Polaris	Leif Arntzen	Glen Cove Yacht Club	New York, NY, USA	Concordia 41	41' 17.9 / 205
10.	8	SPIRIT	Lars Forsberg	IHYC, NYYC, Storm Trysil, CCA	Greenwich, CT, USA	Alden Schooner	47 19.7 / 180
11.	100	Ticonderoga of Greenwich	L Scott Frantz	RYC	Greenwich, CT, USA	classic ketch	72 36.5 / 52
Cat Boat Division							CRF / Sec/Nm
1.	Z	Agrippina	Irene Willisch	IHYC	Old Greenwich, CT, USA	Catboat Sanderling	18'2" 12.3 / 310
2.	USA 1	Dulcinea	Michael Engelbert	Horseshoe Harbor	Larchmont, NY, USA	LF Herreshoff Rozinante	28 11.8 / 323
3.	FRA 76	Esprit	Peter Grueterich	RYC / NYYC	Riverside, CT, USA	Tofinou 7	22 12.5 / 305
4.	USA N/A	Harvest Moon	Henry Schwalenberg	Catboat Association	Bronx, NY, USA	Marshall 22 Catboat	22' 12.5 / 305
5.	BH99	malo	mark dam	darien boat club	darien, ct, USA	marshall	18 ft 12.3 / 310
6.	na	Mayfly	Richard Case	Larchmont Yacht Club	Greenwich, CT, USA	CTM 18 Mayfly	18.2 9.1 / 410
7.	USA USA 1985	North River 2	George Conk Peter Madison	City Island Yacht Club	USA	Buzzards Bay 14	14 9.8 / 384
Division: PHRF							
"Near Classics" Division (PHRF)							
1.	4306	Bagheera	George Yankowich	Indian Harbor Yacht Club	Greenwich, CT, USA	Hinckley	35' 196.0
2.	101	Bull's Eye	Len Merullo	Saugatuck Harbor	Ridgefield, CT, USA	custom yawl	41'8 165.0
3.	USA 2979	Spectra	Jonathan and Carlo Zaskorski	Manhasset Bay Yacht Club	Port Washington, NY, USA	Hinckley H-38	37.6 177.0
4.	B 40	Vantage	Edward Volkwein	IHYC	Stamford, CT, USA	Hinckley Bermuda 40	40 176.0
Racing Area: x One Design Circle							
Division: One Design							
One Design Division							
1.	54	54	Rob Dailey / Com Crocker	Larchmont Yacht Club	New Rochelle, NY, USA	Shields	30'
2.	237	Bit-O-Honey	Ken Deyett	Buzzard Bay	Marion, MA, USA	Shields	30
3.	176	Katherine	D Campbell/takata/wertheim	Larchmont yc	New rochelle, Ny, USA	Shields	30
4.	106	Lady	Mawe Millar Bemus	Larchmont Yacht Club	Larchmont, NY, USA	Shields	30
5.	182	Lure	Skip McGuire	Larchmont YC	Stamford, CT, USA	Shields	30'2"
6.	USA 205	Nemesis	Jonathan Krumeich		CT, USA	Shields	
7.	USA 23	Rascal	Kurt Weisenfluh		USA		
8.	USA 1234	Shields	Ann Schwagerl	Oakcliff Sailing	Brooklyn, NY, USA	Shields	30ft
9.	5	Swamp Fox	James Lawless	Larchmont YC	Larchmont, NY, USA	Shields	30'2
10.	Usa 26	Tango	Ronan/ Hynes	Larchmont Yacht Club	Mamaroneck, NY, USA	Shields	30
11.	238	White Rabbit	Richard Robbins	Beverly	Mattapoisett, MA, USA	Shields	30

(Missing one Oakcliff Shields)



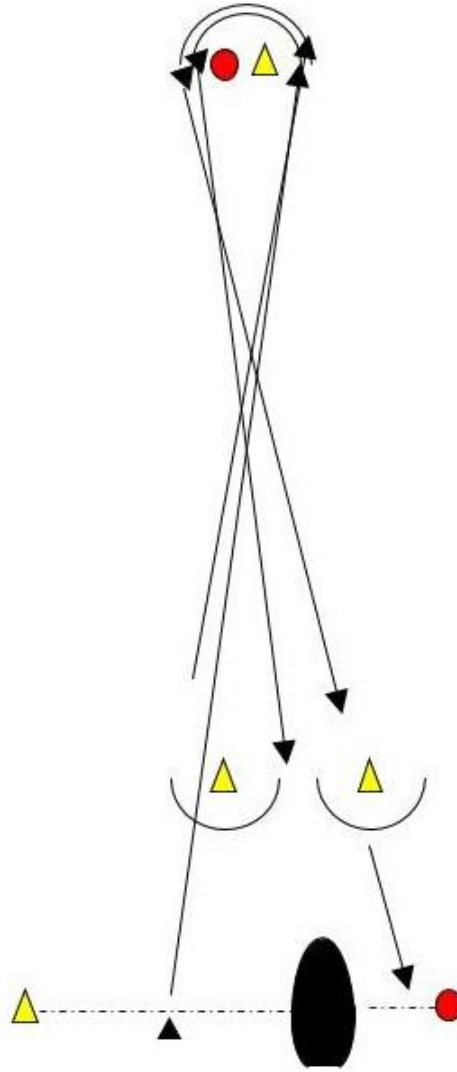
Addendum 4: STARTING TIMES FOR OFFSHORE/NAVIGATORS COURSE



[Link to 2024 Offshore Starting Sequences](#)



Addendum 5: Inshore/One Design Course Diagram





Addendum 6: Sail Insight QR Code

<https://my.sapsailing.com/gwt/Home.html#/event/:eventId=d71181a3-f130-4e3f-9bf4-8c29bd0355be>



###