

Naval Academy Sailing Fall Race to Cambridge

Saturday, September 7, 2024
CBYRA Sanction # 314

SAILING INSTRUCTIONS

including amendment No. 1 and No. 2

The Organizing Authority (OA) is Naval Academy Sailing. The host is Navy Offshore Sailing.

The notation '[DP]' in a rule in these Sailing Instructions (SI's) means that the penalty for a breach of that rule may, at the discretion of the protest committee, be less than disqualification. The notation '[NP]' in a rule of the SIs of NoR means that a boat may not protest another boat for breaking that rule. This changes RRS 60/1(a).

1. RULES

- 1.1. This event will be governed by the rules as defined in the most current version of the Racing Rules of Sailing (RRS).
 - a. In the event of a conflict between the Sailing Instructions and the current Racing Rules of Sailing, the Sailing Instructions will apply. This modifies RRS 63.7
- 1.2. J105 Class Rules are modified by Article IX of the local J/105 Fleet-3 Article/Rules. This event is designated a Level 1A. J/105 Fleet-3 Articles/Rules can be found at <https://www.j105fleet3.org/rules>.
 - a. This event is designated a Level 1A event.
- 1.3. For all CHESSS boats competing, the 2024 CHESSS Racing Rules will apply.
- 1.4. All boats shall minimally comply with the [US Sailing Monohull Nearshore Safety Equipment Requirements](#) (SER) of the US Sailing SER and shall comply with their class rules, where applicable.
 - a. The following requirements from the [US Sailing Monohull Coastal SER](#) shall also apply, except that boats not normally rigged with lifelines are exempt from US SER 2.4.1 and crew must wear USCG approved PFDs at all times while racing.
 - 2.4.1 Lifelines
 - 2.7.2 Mechanical Propulsion
 - 3.7.1 Lifesling
 - 3.14 GPS
 - 3.20 Charts
 - 3.29.2 Emergency Tiller
 - 3.33.1 Mainsail Reefing
 - 3.36 Boom Support
 - b. In the event of a conflict between these requirements and applicable Class Rules, the Class Rules shall apply.
- 1.5. [DP] For all multihull boats competing, the [US Sailing Multihull Nearshore SER](#) will apply. as changed below.
 - a. The following requirements from the [US Sailing Multihull Coastal SER](#) shall also apply,
 - SER 2.7.3 Mechanical Propulsion
 - SER 3.14 GPS
 - SER 3.22 Plugs
 - SER 3.24.1 Searchlights
 - SER 3.26 Radar Reflector
 - SER 3.35 Rigging: Halyards

- b. In the event of a conflict between the SER and applicable class rules, the class rules shall govern.
- 1.6. RRS 40 is changed to require all competitors racing aboard any boat which is being single or double handed, to wear personal flotation devices at all times when above deck.
- 1.7. [NP] MANDATORY CHECK-IN: No later than 0830, a race committee check-in boat displaying a yellow Race Committee flag will be approximately 300 yards NW of the signal boat and clear of the starting area. Prior to starting, each boat shall pass astern of the check-in boat, hail her sail number, class, and the number of souls on board, and receive a verbal confirmation by the race committee. A boat that starts without checking in will receive a 20% scoring penalty (see RRS 44.3(c)) without a hearing. This changes RRS 63.1 and A5.

2. SAILING INSTRUCTIONS

- 2.1. Any change to the sailing instructions will be posted before 0800 on the day it will take effect.

3. COMMUNICATIONS

- 3.1. Notices to competitors will be posted on the official notice board. The official notice board is electronic and will be located on Yacht Scoring: yachtscoring.com/emenu.cfm?eID=16867.
- 3.2. The race office can be reached via email at suarez@usna.edu. Forms can be found online on the Yacht Scoring event page..
- 3.3. On the water, the race committee intends to monitor and make courtesy broadcasts to competitors on VHF radio channel 78.
- 3.4. A boat retiring from racing should contact the Race Committee on VHF channel 78 and must email the Race Office at suarez@usna.edu as soon as possible after retiring.
- 3.5. [DP] While racing, except in an emergency, a boat shall not make voice or data transmissions and shall not receive voice or data communication that is not available to all boats.

4. CODE OF CONDUCT

- 4.1. [DP] Competitors and support persons shall comply with reasonable requests from race officials.

5. SCHEDULE

- 5.1. The first warning signal is scheduled for 0900. Classes will be started in approximate “reverse order” with slower classes starting first.
- 5.2. A Schedule of Starts will be posted to the Official Notice Board by 1700 Friday September 6th.
- 5.3. The OA may combine separate classes into the same start and change the Schedule of Starts until 0800 Saturday September 7th.

6. CLASS FLAGS

- 6.1. Starting Classes
 - a. The OA will post assignments of boats in handicap fleets to starting classes no later than 2000 Friday September 6th.
 - b. The OA may combine multiple classes into the same start.
- 6.2. All boats may display their class flag at the stern, approximately five feet up on the backstay if possible.
- 6.3 The class flags are:

Alberg 30	Golf
J30	Delta
J105	Four
ORC 1	O over one
ORC 2	O over two
ORC Performance Cruiser	O over Five
CRCA Racer	Green

CRCA Cruiser	White
CHESS Spinnaker	3rd Substitute
PHRF A0	Zero
PHRF A1	Nine
PHRF A2	Two
PHRF B	Six
PHRF C/D	Seven
PHRF N	Five
PHRF CRUISER	
NON-SPIN	2nd Repeater
SPIN	Eight
Multihull A/B	Whiskey

7. THE COURSE

- 7.1. The start will be at or near Government Mark SR just South of Thomas Point Light, the starting line will be between a staff on the Race Committee Signal Vessel displaying an orange flag as the starboard end of the line and an yellow inflatable mark as the port end.
- 7.2. After starting, the following marks shall be rounded or passed in the following order:
 - (a) G1 FI G 4s passed to starboard
 - (b) GC “85A” passed to starboard
 - (c) R “84” FI R 4s passed to port
 - (d) R “80A”, rounded to port,
 - (e) G “9” FI G 4s, rounded to port,
 - (f) R “10” FI R 2.5s, rounded to starboard,
 - (g) R “14” FI R 2.5s, rounded to starboard
 - (h) G “19” FI G 2.5s rounded to port
 - (i) G “21” FI G 4s rounded to port
 - (j) R “24” rounded to starboard
- 7.3. The finish will be between the CYC flagpole as one end of the line and the blue flag on a RC vessel as the other end.
- 7.4. The race committee may shorten the course by class at any of the rounding marks of the course. If the course is shortened, the finish line will be between the government mark and the staff displaying flag “S” on the RC vessel.

8. THE START

- 8.1. Races will be started using US Prescriptions to the RRS Appendix U with all hails being made via VHF radio.
- 8.2. Prior to the warning signal, the race committee will announce the next class to start on VHF radio and as a courtesy display the class flag, the class flag is not a timed signal.
- 8.3. The starting line will be between an orange flag on the signal boat and a nearby yellow inflatable mark.
- 8.4. If the code flag Lima is displayed, the race committee may move the Start to shorten the course. Once on station, the Start will then be between an orange flag on the signal boat and a yellow inflatable mark, or between an orange flag on the signal boat and a nearby government mark.
- 8.5. [DP] Boats whose warning signal has not been made shall avoid the starting area during the starting sequence for other competitors.
- 8.6. The Race Committee will announce on VHF radio boats identified as OCS, UFD, or BFD. A boat may not base a request for redress on the failure to hear or receive the announcements, the timeliness of announcement or the order in which boats are announced. This changes RRS 62.1(a).

- 8.7. A boat that does not start within 10 minutes after her starting signal will be scored Did Not Start without a hearing. This changes RRS A4 and A5.

9. THE FINISH

- 9.1. The finish line will be between a staff displaying a blue flag on the Race Committee Vessel and an inflatable mark inline with the CYC flag pole.
- 9.2. If the course has been shortened to a rounding mark, the finish line will be between a staff displaying a “S” flag on the race committee finish boat and the rounding mark.
- 9.2.1. If the course has been shortened and in the event there is no Race Committee boat on station at the finish line each boat shall record their own finish time using GPS time and report the time via email to the race committee office (suarez@usna.edu) when the mark is within 200 yards and at a bearing 90 degrees relative to the bearing from the previous mark.

10. PENALTY SYSTEM

- 10.1. Penalties while racing: RRS 44.2, One-Turn and Two-Turn Penalties will apply.
- 10.2. Penalties after racing: RRS Appendix V2, Post-Race Penalties will apply.

11. TIME LIMIT, FINISHING WINDOW

- 11.1. The time limit for all competitors is 1800.

12. PROTESTS, REQUESTS FOR REDRESS, AND SCORING INQUIRIES

- 12.1. The protest time limit for each boat is 2 hours from when the boat finishes.
- 12.2. Editable protest forms can be found on the Event page in Yacht Scoring under Documents and Forms.
- 12.3. Protests and requests for redress must be submitted via email to the Chief Judge Dan Trammell, (dantramm@verizon.net) as well as the event PRO (nnelsoncp@aol.com) within the protest time limit.
- 12.4. Notices of protests by the race committee or protest committee will be posted on the Official Notice Board to inform boats under RRS 61.1(b).
- 12.5. As soon as practicable after the protest is filed, a notice will be posted to the Official Notice Board to inform competitors of the protests in which they are parties or have been named as witnesses.
- 12.6. Parties to protests will be notified individually of times for arbitration or protest hearings. Hearings will be scheduled by the Protest Committee, may be scheduled for a later date, and may take place virtually. Guidelines and an explanation of the Virtual Hearing process is available on the Official Notice Board.
- 12.7. The time limit for Scoring Inquiries is 1 hour from when the scores are posted. A Scoring Inquiry may be submitted to the race committee office via email to suarez@usna.edu and the event PRO (nnelsoncp@aol.com). When the race committee receives a scoring inquiry they will confirm receipt of the inquiry, review the event records, and respond as soon as practicable.
- 12.8. Editable Scoring Inquiry Forms are available here https://yachtscoring.com/pdf/Scoring_Inquiry_fillable.pdf and on the Official Notice Board.

13. SCORING

- 13.1. RRS Appendix A4 Low Point System, will apply as changed by the SIs.
- 13.2. Corrected times for PHRF classes will be calculated using PHRF Time-on-Time scoring Random Course Handicap.
- 13.3. Corrected time for ORC Open and ORC Performance Cruiser classes will be calculated using ORC Time-on-Time ratings. The race committee will announce the course type and wind speed rating before the first boat finishes.

- 13.4. Corrected times for CRCA classes will be calculated using handicaps supplied by the CRCA class administration. These handicaps will be determined solely by the CRCA class administration and will be provided to the OA no later than 1700 on Friday September 6th. The RC will announce the course type and wind speed rating before the first boat finishes.
- 13.5. Corrected time for CHESSS classes will be calculated using PHRF Time-on-Time scoring Random Course Handicap.
- 13.6. The course type and wind speed rating chosen by the RC for ORC and CRCA classes, the timing of the announcement, a competitor's ability to hear or understand the announcement, will not be considered as grounds for Redress. This changes RRS 62.1.

14. SAFETY REGULATIONS

- 14.1. [DP] A boat that retires from the race shall notify the race committee at the first reasonable opportunity as described in (see SI 3.3).
- 14.2. [NP] [DP] A boat shall not exercise right of way, cross in proximity to, or interfere with reasonable transit of the race by commercial ships, tugs, or barges, Boats must take evasive action well in advance of a potentially dangerous situation.
- 14.3. A boat without way may use any means of propulsion to avoid commercial traffic that is under way provided: (a) the boat does not gain an advantage; (b) use of the propulsion is the boat's only means of avoiding the commercial traffic; and (c) the boat submits a report to the race office (see SI 3.2) by the protest filing deadline describing the incident and the boat's actions.
- 14.4. The race committee or protest committee may protest a boat for SI 14.2 based on information from any source. The protest time limit does not apply. A written statement from the US Coast Guard, a ship captain, or a bay pilot will be accepted as evidence without the author present. This changes RRS 60.2, 60.3, and 63.6.
- 14.5. It is the responsibility of the skipper to know the draft of their boat, and to navigate in safe waters.

15. PRIZES

- 15.1. Prizes will be given in each class for 1st place with 3 or more starters, 2nd place with 6 or more starters, and 3rd place with 9 or more starters. Awards will be mailed at a later date.
- 15.2. The Aloha Cup will be awarded to the best corrected time in all PHRF classes.

16. DISCLAIMER OF LIABILITY

- 16.1. RRS 3 states: 'The responsibility of a boat's decision to participate in a race or to continue *racing* is hers alone.'

FURTHER INFORMATION

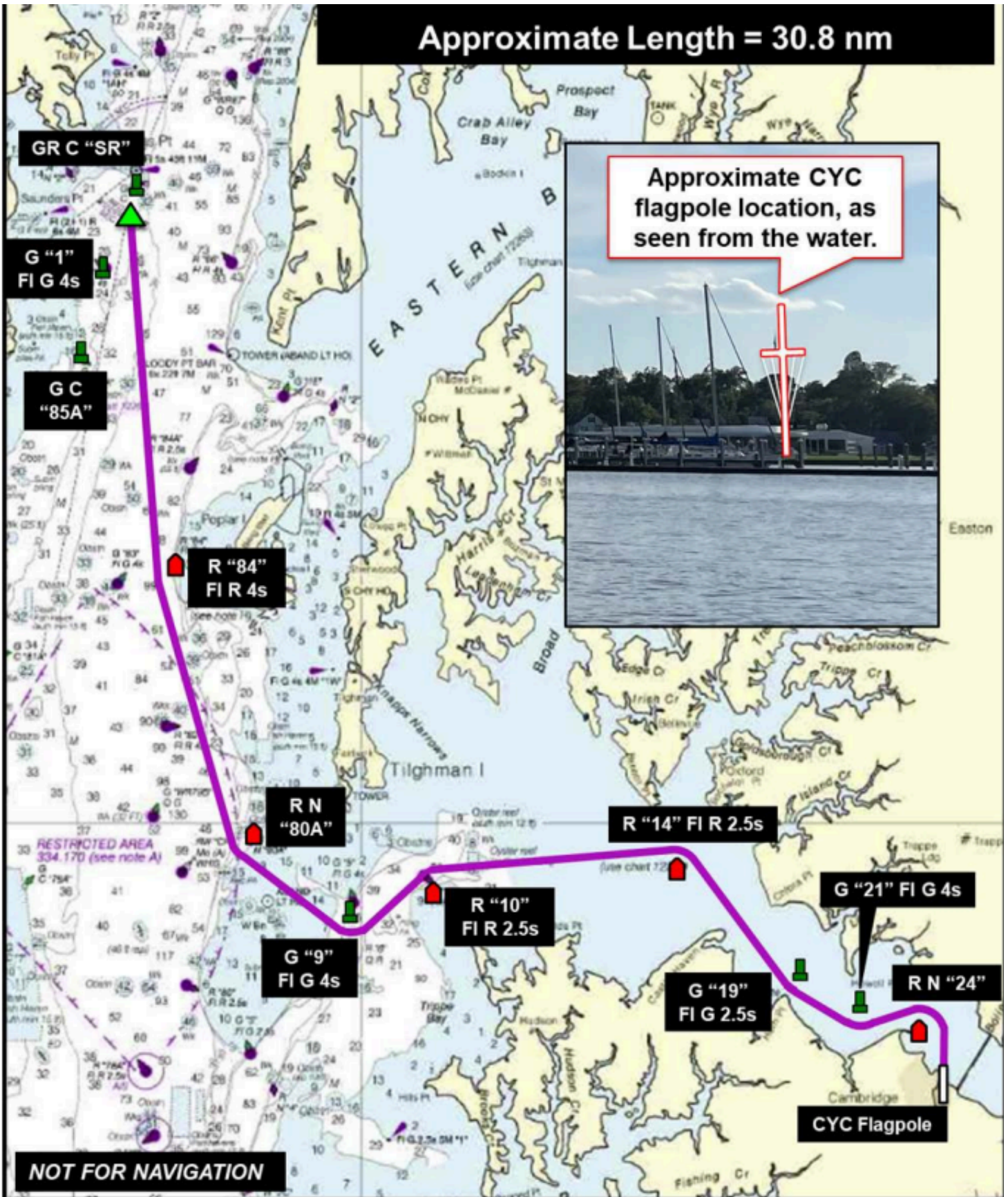
For further information, please contact the Navy Offshore Sailing office.

Nick Finucan – Event Chair
Assistant Coach, Varsity Offshore Sailing Team
finucan@usna.edu | 410-293-5608

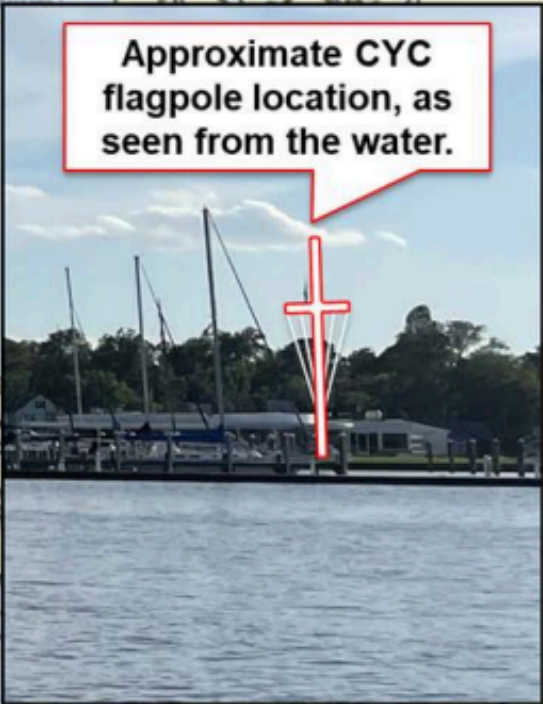
ENS Rowan Suarez
Asst. Coach, Navy Offshore Sailing
Suarez@usna.edu 410-293-5611

Nelson Pemberton, PRO
nnelsoncp@aol.com

Approximate Length = 30.8 nm



Approximate CYC flagpole location, as seen from the water.



Easton