



NEW YORK YACHT CLUB RACE WEEK AT NEWPORT

Presented by ROLEX

July 9-16, 2016
Newport, Rhode Island

SAILING INSTRUCTIONS - PART II incorporating AMENDMENTS 1-3

GENERAL

Racing for One-Design and Handicap classes will be run on Wednesday-Saturday, July 13-16. In addition to drop mark buoy racing, a mid-distance race will be included, conditions permitting. Racing may also include races using government marks (“Navigators Races”) and “stadium” racing (short W/L).

1 RULES

- 1.1 The regatta will be governed by the rules as defined in *The Racing Rules of Sailing* (RRS).
- 1.2 The Race Week website can be found at <http://nyyc.org/yachting/racing/2016-nyyc-race-week>.
- 1.3 **Check-in:** Each yacht shall register at the check-in desk at the NYYC Sailing Center at Harbour Court prior to racing at the times so designated in the Notice of Race.
- 1.4 **Crew Waiver:** No crew shall be aboard a yacht while racing unless he/she has executed the online Crew Waiver Form. The Crew Waiver Form is available on the Race Week website. Registration will not be complete without receipt of a complete Crew Waiver Form.
- 1.5 **Safety Equipment Requirements:** All yachts shall comply with the US Nearshore section of the NOR Addendum 1 – US Safety Equipment Requirements (USSER) and shall comply with their class rules, where applicable.
 - a) USSER 2.4.2 through 2.4.8 regarding Hull and Structure: Lifelines shall apply, except that yachts not normally rigged with lifelines are exempt for these requirements and all crew members shall wear approved PFDs at all times while racing.
 - b) In the event of a conflict between these Requirements and applicable class rules, the class rules shall apply.
- 1.6 The prescriptions of US SAILING that are posted as NOR Addendum 2 on the Race Week website shall apply.
- 1.7 The Protest Committee may impose suitable penalties, other than disqualification, for breeches of non-Part 2 rules. This changes RRS 64.1.
- 1.8 The 2016 IRC Rules and Regulations paragraphs A, B and C shall apply to yachts racing under IRC. IRC Rules 21.1.5 (d) and (e) are changed as follows: During the regatta, the sails carried (including mainsails and spinnakers) may vary from day to day, but shall remain the same for each individual race day, including days with multiple races even in the case of damage to sails. The race day begins when the boat first leaves the dock or its mooring for the race course.
- 1.9 The ORC Club rules shall apply to yachts racing in the Navigators Racing. The ORCi rules will apply to IRC yachts that provide an ORCi certificate and choose to be dual-scored. See SI 16.5.
- 1.10 The current class rules shall apply to all yachts racing as a one-design class, except as noted in these sailing instructions.



- 1.11 Where there is a conflict between an Appendix to the Sailing Instructions, the Sailing Instructions and/or the Notice of Race, the document listed first in this instruction shall prevail. This changes RRS 63.7.
- 1.12 J/109 Class only: Sailing Instructions Appendix E pertain to J/109s participating in their 2016 North American Championship to be held as part of NYYC Race Week at Newport.
- 1.13 J/105 Class only: This is a Class Level A event in accordance with Class Rule 3.7. Class Rule 7.1, maximum crew weight, shall apply. There will be no weigh-in at registration.
- 1.14 C & C 30 Class only: Sailing Instructions Appendix F pertains to C&C 30s participating in their 2016 North American Championship to be held as part of NYYC Race Week at Newport.
- 1.15 Swan 42 Class only: Sailing Instructions Appendix G pertains to the Swan 42s participating in their 2016 U.S. Nationals. Class Rule 6.2.1 is in effect. One-design inshore sails shall be used for all racing including the distance race if run.
- 1.16 M32 Class only: Sailing Instructions Appendix J pertains to the M32 class and describes changes to these sailing instructions.

2 ENTRIES

Eligible yachts shall enter by completing online registration with the Organizing Authority on the Race Week website. Eligibility requirements for yachts and method of entry are detailed in the Notice of Race.

3 NOTICES, COMPETITOR INFORMATION AND SIGNALS MADE ASHORE

- 3.1 Notices, including race documents, results and amendments, jury information (including protest time limits and hearing schedules) will be posted on the Official Notice Board located in the courtyard of the NYYC Sailing Center at Harbour Court. This information may also be posted on the Race Week website.
- 3.2 Flag signals will be flown from the flagpole at Harbour Court.
- 3.3 Any change to the sailing instructions will be posted before 0900 on the day it will take effect, except that any change to the schedule of races will be posted by 1900 on the day before it will take effect. Flag "Lima" will be flown to signify such posting.
- 3.4 When "AP" is displayed ashore, "one minute" is replaced with "not less than one hour" in Race Signal "AP".
- 3.5 Signals designating the rendezvous locations will be displayed at 0900 each race day from the flagpole at Harbour Court. The Race Committee will endeavor to announce the circle assignments, format and the rendezvous locations as described in SI 4 and SI 6 at that time over VHF Channel 72. The failure to make this announcement or for a yacht to hear this announcement will not be grounds for redress. This changes rule 62.1(a).
- 3.6 After the rendezvous locations and any other regatta announcements have been made, Race Committee Signal Boats will monitor and communicate with their respective classes on the VHF channels published in SI 4.4.

4 CLASSES AND IDENTIFICATION

- 4.1 The Organizing Authority will divide yachts into classes. Classes will be assigned a numeral or color designation and assigned each day to either the Blue, White, Red or Green circle. Note that a class may sail in different circles on different days.
- 4.2 **Format** – No later than 1900 on the day before they will take effect, the Race Committee will notify competitors of the circle assignments for each class and the intended type of racing for the following day:
 - a) Distance/Coastal Race – SI Appendix A (a medium distance race on Rhode Island Sound and/or Narragansett Bay)
 - b) Navigator Races – SI Appendix B (racing using government marks and racing marks on Narragansett Bay)
 - c) Stadium Sailing – SI Appendix C (short W/L racing around drop marks on Narragansett Bay)
 - d) Drop Mark Races – SI Appendix D (longer drop mark racing)
- 4.3 **Scratch Sheets** - The scratch sheets designating class assignments will be distributed at registration, posted on the Official Notice Board and posted on the regatta website.
- 4.4 **VHF Channels** - The Race Committee VHF channels for each circle are:

Blue Circle	VHF Channel 72
White Circle	VHF Channel 69
Green Circle	VHF Channel 71
Red Circle	VHF Channel 77

- 4.5 **Class Flags** – Each yacht shall display the flag corresponding to her class designation, as shown on the scratch sheet, from her backstay approximately six feet above the deck and above the Rolex flag, from the warning signal of the first class on her circle until she is no longer racing.
- 4.6 **Bow Stickers and Flags** - Each yacht shall display the Rolex backstay flag and bow stickers provided at registration while racing.

5 SCHEDULE OF RACES

- 5.1 The first warning signal for each circle is scheduled for 1200 on Wednesday, July 13, and 1100 on Thursday through Saturday, July 14-16.
- 5.2 No warning signal shall be made after 1500 on Saturday, July 16.

6 RENDEZVOUS LOCATIONS

Circle rendezvous locations are listed below and will be designated as described in SI 3.5. See SI Appendix I – NYYC Primary Race Areas.

Rhode Island Sound:

- Area “A” - in the vicinity of 160° for 1.2 NM from R “2” QR Whistle marking Brenton Point
- Area “B” - in the vicinity of 120° for 2.5 NM from R “2” QR Whistle marking Brenton Point

Newport Harbor and near Newport Bridge:

- Area “C” - in the vicinity of Mackerel Cove
- Area “K” - between Goat Island and Rose Island
- Area “M” - in the vicinity of 0.5 NM west of R “12” Rose Island
- Area “O” - in the vicinity of Potter Cove (just north of west end of Newport Bridge)

North of Newport Bridge:

- Area “R” - in the vicinity of 200° for 0.5 NM from Halfway Rock
- Area “T” - in the vicinity of G “7” QG off Quonset Point

7 CHECK-IN AND RETIREMENT

- 7.1 Prior to the Course Signals for the first race each day, the Race Committee will conduct a roll call over the respective circle VHF channel. Yachts should monitor their circle VHF channel after leaving the harbor.
- 7.2 **STARTING AREA RESTRICTIONS** – Yachts, including any support or coach boat, shall keep clear of the Race Committee Signal Boat, the starting line, and the starting mark from the time of the Course Signals for a race until the Warning Signal for their class. In addition, the Race Committee may delineate a **STARTING BOX** by placing two or more buoys to leeward of the starting line to form a starting box area between these buoys and the starting line. If so established, yachts shall keep outside the starting box from the time of the Course Signals for a race until the Warning Signal for their class.
- 7.3 The Race Committee may announce the lat/long positions of the signal boat and starting mark over the circle VHF channel. Failure to make such an announcement, nor the timing of any announcement, shall not be grounds for redress. This changes rule 62.1(a).
- 7.4 Yachts retiring are requested to inform the Race Committee on the circle VHF channel or by calling (401) 845-9633.

8 COURSES & MARKS

The courses and marks are described in the SI Appendices as follows:

- a) Distance/Coastal Race – SI Appendix A
- b) Navigators Races – SI Appendix B
- c) Stadium Sailing – SI Appendix C
- d) Drop Mark Races – SI Appendix D

9 THE START

- 9.1 Races will be started in accordance with rule 26.
- 9.2 A yacht starting later than 20 minutes after her starting signal will be scored Did Not Start. This changes rule A4.
- 9.3 The starting line will be between a staff displaying an orange flag on the Race Committee Signal Boat and the course side of the port-end starting mark.

9.4 Yachts whose warning signal has not been made shall keep clear of the starting area. See SI 7.

10 INDIVIDUAL RECALLS

The Race Committee will endeavor to hail each premature starter on the circle VHF channel. Failure to make such an announcement, nor the timing or order of any announcement, shall not be grounds for redress. This changes rule 62.1(a).

11 THE FINISH

The finishing line will be between a staff displaying a blue flag on the Race Committee Signal Boat and the course side of the finishing mark as described in the relevant SI Appendix.

12 GOVERNMENT BUOYS

Government buoys have no required side except when specified as marks or as having a required side in the relevant Appendix. Caution should be exercised for safe navigation.

13 PENALTY SYSTEM

13.1 If class rules or a special SI Addendum specifies a penalty, a yacht that may have broken a rule of Part 2 while racing may take a penalty at the time of the incident as provided in that document.

13.2 For all other yachts where a class rule does not specify a penalty, rule 44.1 is changed so that a yacht has the choice between penalty systems, and the Two-Turns Penalty is replaced by the One-Turn Penalty. A yacht may choose either to:

- a) take a One-Turn Penalty in accordance with rule 44.2; or
- b) take a Scoring Penalty in accordance with rule 44.3.

13.3 A yacht that has taken a penalty shall complete an online [penalty acknowledgement form](#) or a paper form available from the Jury Secretary and submit/file it with the Jury Secretary no later than the end of protest time.

14 TIME LIMIT

14.1 The time limit to sail the course and finish is as follows:

- a) For a Navigators Race course – five hours;
- b) For a Stadium Sailing course – one hour;
- c) For a Drop Mark Race course – three hours;
- d) For a Distance Race – seven hours.

14.2 Yachts failing to finish within the time limit will be scored Time Limit Expired (TLE) and scored points as described in SI 16.3. This changes rules 35 and A4.

15 PROTESTS AND REQUESTS FOR REDRESS

15.1 A yacht intending to protest or file a request for redress is requested to report both their intention and the yacht(s) being protested to the Race Committee on the circle VHF channel as soon as possible after finishing or withdrawing from the race.

15.2 Protests or requests for redress shall be submitted to the Jury Secretary in the NYYC Sailing Center as soon as possible, but not later than one hour after the Race Committee Signal Boat for that circle has docked either on the written protest form available from the Jury Secretary or on the [online protest form](#). The time limit for filing a protest will be posted on the Official Notice Board.

15.3 Protest notices will be posted as soon as possible on the Official Notice Board.

15.4 Protest hearings will take place at the NYYC Sailing Center as soon as possible after the notices are posted. The protest committee will attempt to hear protests in the order of receipt. Representatives of yachts who are parties to a hearing shall remain on call in the vicinity of the protest rooms.

15.5 When a yacht has been involved in an incident that may be subject to protest, it is her responsibility to check the protest notices at the end of the protest filing time to see if she is cited in a protest. Failure of any yacht to appear when called for a hearing will be considered by the protest committee as grounds for proceeding under rule 63.3(b).

15.6 Rule 63.5 is changed by adding, “A protest involving contact may be heard by the protest committee even though the requirements of rule 61.1(a) and 61.3 have not been fulfilled.”

15.7 Breaches of SIs 4.5, 4.6, 7, 9.4 and 18.2 will not be grounds for a protest by a yacht. This changes rule 60.1(a).

15.8 A yacht found to have breached SI 7.2 shall be penalized a minimum of two points. This changes rule 64.1.

- 15.9 A violation of SI 18.2 will be considered “a gross breach of a *rule*” under rule 69.1(a).
- 15.10 On July 16 only, a written request for reopening a hearing shall be delivered to the Jury Secretary:
- Within the protest time limit if the requesting party was informed of the Protest Committee’s decision on the previous day; or
 - No later than 30 minutes after the requesting party was informed of the Protest Committee’s decision on that day; or
 - If no races are held on the last scheduled day of racing, within one hour after racing has been abandoned.
- This changes rule 66.
- 15.11 On the last scheduled day of racing, a request for redress based on a Protest Committee decision shall be delivered in writing no later than 30 minutes after the decision was posted. This changes rule 62.2.

16 SCORING

- 16.1 A yacht’s series score will be the total of her race scores. There will be no drop race. This changes rule A2.
- 16.2 One race is required to be completed to constitute a series.
- 16.3 Yachts that have started and failed to finish within the time limit for any reason, shall, without a hearing, be scored by the Race Committee with points equal to the number of yachts in her class that have sailed the course and finished within the time limit, plus two. This changes rule A4.1, A4.2, and A5.
- 16.4 Overall scoring for IRC (comparing different classes) will be calculated using corrected seconds/mile.
- 16.5 Yachts will be scored under ORCi for information purposes only.
- 16.6 The distance used for scoring purposes will be calculated by the Race Committee. This shall not be grounds for redress. This changes rule 62.1(a).

17 PRIZES

Prizes will be awarded as follows in accordance with the Notice of Race.

18 NOTES

- 18.1 Competitors are reminded that Narragansett Bay and its approaches are considered restricted channels for commercial traffic and other vessels restricted in their ability to maneuver. Competitors must comply with the government right-of-way rules when in proximity to commercial or privileged marine traffic.
- 18.2 In the event there is racing in Narragansett Bay, competitors should be aware of heightened security around the Navy base in Newport just to the north of the Newport Bridge. The area to the east of a line defined by a series of white buoys marking the Newport Security Zone along the coast of the Naval Facilities from Coasters Harbor to the breakwater at the north end of Coddington Cove shall rank as an obstruction. Yachts shall not enter this area. A Navy patrol boat monitors the area and vessels navigating in the Exclusionary Zone may face action by Coast Guard and Naval authorities.
- 18.3 Individual support or coach boats, defined as any boat that is under the direction or control of a person gathering information or giving material support for the benefit of a particular competitor(s) either on the water or off, shall stay outside the racing area and shall not interfere with the race committee or any yacht in the race area. Breaches of this rule may result in a penalty to the yacht associated with the support or coach boat.
- 18.4 All times herein are Eastern Daylight times. Bearings are in degrees magnetic and are approximate. Distances used herein are expressed in nautical miles (when not otherwise defined) and are approximate.
- 18.5 Newport Tides

Day	Date	Low Tide	Ft	High Tide	Ft
Wednesday	July 13	0835	0.7	1542	3.3
Thursday	July 14	0931	0.6	1635	3.3
Friday	July 15	1023	0.5	1728	3.4
Saturday	July 16	1112	0.4	1814	3.5

- 18.6 For further information please contact:

New York Yacht Club, Harbour Court; 5 Halidon Avenue; Newport, RI 02840
 Tel: 401-845-9633; Fax: 401-846-3303
 Email: sailingoffice@nyyc.org
 Website: <http://nyyc.org/yachting/racing/2016-nyyc-race-week>

SAILING INSTRUCTIONS

Appendix A – DISTANCE/COASTAL RACE

Wednesday-Saturday, July 13-16

A1 START

- A1.1 The intended order of start for the Distance Race will be included in the Race Committee's announcement on VHF Channel 72 at 0900. Classes may not start in numerical order. The Race Committee may combine two or more classes into one start by displaying multiple class flags at the Warning Signal. The Race Committee will endeavor to announce the next class(es) to start on their respective circle VHF channel.
- A1.2 The starting mark will be a YELLOW tetrahedron buoy.

A2 COURSES

- A2.1 The Distance/Coastal Race will race on a course using marks as described on the *2015-2017 South Bay Race Chart* and in SI Appendix H – Additional Marks.
- A2.2 The flag(s) designating the course to be sailed will be displayed at Course Signals. The Race Committee will endeavor to announce the designated courses on their respective circle VHF channel. Failure to make such an announcement shall not be grounds for redress. This changes rule 62.1(a).
- A2.3 **COURSE 1** – If numeral pennant “1” is displayed, the course will be clockwise around Conanicut Island:
- | | | |
|---|--|---|
| Start | | |
| Special Mark “E” if used (see SI Appendix H2.1) | | (required side designated on white board) |
| Mark “N” GR “NR” Bell southwest of Beavertail Point | | leave to starboard |
| Jamestown Verrazano Bridge | | center span |
| Mark “20” G C “5” northwest of Conanicut Point | | leave to starboard |
| Mark “22” R “2” Fl R northeast of Conanicut Point | | leave to starboard |
| Newport Bridge | | center span |
| Mark “S” R “12” Fl R Bell southwest of Rose I | | leave to port |
| Finish (see SI A2.8) | | |
- A2.4 **COURSE 2** – If numeral pennant “2” is displayed, the course will be counter-clockwise around Conanicut Island:
- | | | |
|---|--|---|
| Start | | |
| Special Mark “E” if used (see SI Appendix H2.1) | | (required side designated on white board) |
| Mark “S” R “12” Fl R Bell southwest of Rose I | | leave to starboard |
| Newport Bridge | | center span |
| Mark “22” R “2” Fl R northeast of Conanicut Point | | leave to port |
| Mark “20” G C “5” northwest of Conanicut Point | | leave to port |
| Jamestown Verrazano Bridge | | center span |
| Mark “N” GR “NR” Bell southwest of Beavertail Point | | leave to port |
| Finish (see SI A2.8) | | |
- A2.5 **COURSE 3** – If numeral pennant “3” is displayed, the course will be:
- | | | |
|---|--|--|
| Start | | |
| Special Mark “E” if used (see SI Appendix H2.1) | | (required sides designated on white board) |
| Marks listed in order to be rounded | | (required sides designated on white board) |
| Finish (see SI A2.8) | | |

The Race Committee will post the course on a white board on the starboard side of the Signal Boat, listing the marks in the order to be rounded, and the required side to leave each mark. The Race Committee intends to also announce the course on their respective circle VHF channel.

- A2.6 For the purposes of rule 32.2(c), the center spans of the Jamestown Verrazano Bridge and the Newport Jamestown Bridge shall be considered gates.
- A2.7 Except when designated as a rounding mark, mark “Q” (G “9” Fl G 2.5s Gong off Bull Pt) and mark “R” (G “11” Q G Bell off The Dumplings) shall be passed on the channel side at all times.
- A2.8 FINISH - The finishing line for the Around-the-Island Race Courses will be between a staff displaying a blue flag on a Race Committee Boat and the finishing mark, which will be a PINK tetrahedron buoy. The finishing line will be located approximately 0.4 NM north of the Fl R 6 sec Horn “2” on the northern point of Fort Adams.
- A2.9 In fog at the finish, the Race Committee Boat may ring a bell rapidly, for approximately 5 seconds, at intervals. The same Race Committee Boat may or may not start and finish each race.

SAILING INSTRUCTIONS

Appendix B – NAVIGATORS RACES

Wednesday-Saturday, July 13-16

In accordance with SI 4.2, Navigators Races will race on course(s) using marks the 2015-2017 South Bay Race Chart as well as additional marks described in SI Appendix H. South Bay Race Chart Special Race Mark #3 will not be used. (Note: Designated courses from the back of the South Bay Race Chart will not be used.)

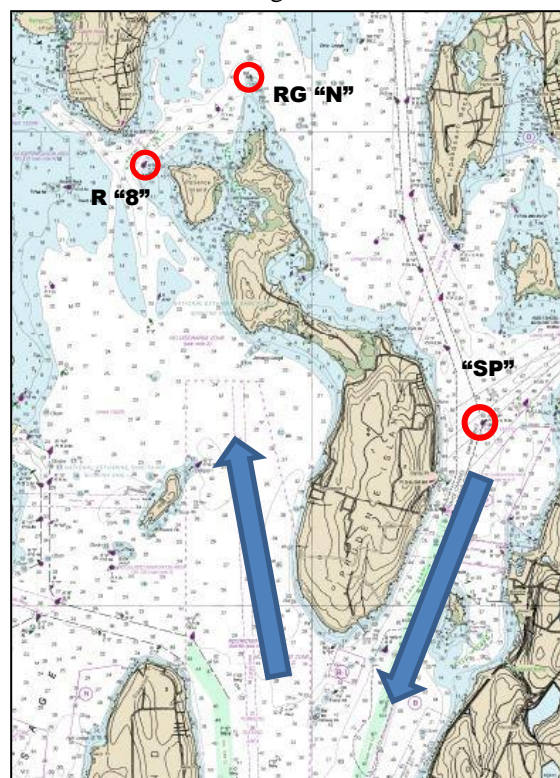
B1 COURSES USING SOUTH BAY RACING CHART

B1.1 **COURSE 4** - If numeral pennant “4” is displayed, the course will be designated using buoys (as described on the 2015-2017 South Bay Race Chart provided at registration and as described in SI Appendix H2 and H3).

- a) The Race Committee will list the marks on a white board in the order to be rounded and the required side to leave the mark using the designations on the 2015-2017 South Bay Race Chart.
- b) **Newport Bridge** – Yachts shall pass through the **center span only** for any course passing under the Newport Bridge. For the purposes of rule 32.2(c), the center span shall be considered a gate.
- c) Special Mark “E” (described in SI Appendix H2.1)
- d) Special Mark “L” (described in SI Appendix H2.2)
- e) The course will be:
 - Start
 - Special Mark “E”, if used (described in SI Appendix H2.1)
 - Round the marks in the designated order leaving each mark to the designated side
 - Finish
- f) Finish between a staff displaying the blue flag on the Race Committee boat and the nearby finishing mark. Note that the intended finishing line will be set adjacent to the Race Committee Signal Boat. However, the race committee may shorten any course at a rounding mark or gate in accordance with rule 32.

B1.2 **COURSE 5** – If numeral pennant “5” is displayed, the course will be clockwise around Prudence Island as follows:

- Start
- Special Mark “E” if used (described in SI Appendix H2.1)
- Leave Prudence Island, including R “8” northwest of Patience Island and RG N at the northern end, to starboard.
- Leave RG “SP” east of Prudence I to starboard
- Finish between a staff displaying the blue flag on the Race Committee boat and the nearby finishing mark.



Course 5

B1.3 After starting and before finishing, the starting and finishing lines are designated as obstructions and shall not be crossed.

B1.4 The location of the Race Committee boat at the finish may be different than the position at the start, but it will be in the same general vicinity.

B2 MARKS

B2.1 The starting mark will be an ORANGE tetrahedron buoy.

B2.2 The finishing mark will be a GREEN tetrahedron buoy.

B2.3 Special NYYC Temporary Inflatable Race Marks 16 and 17 as designated on the 2015-2017 South Bay Race Chart, if used, will be ORANGE tetrahedron buoys.

B2.4 In addition to all buoys listed on the 2015-2017 South Bay Race Chart provided at registration, the marks described in SI Appendix H2 and H3 are additional rounding marks that might be used.

SAILING INSTRUCTIONS

Appendix C – STADIUM SAILING RACES

Wednesday-Saturday, July 13-16

C1 COURSES FOR STADIUM SAILING RACES

C1.1 The Race Committee Signal Boat will signal the Course Number by displaying a numeral pennant. The approximate magnetic bearing and distance in nautical miles and tenths from the Race Committee Signal Boat to Mark 1 will be displayed on a white board on the Race Committee Signal Boat.

Course 2: Start - 1 - 1a - Finish (Downwind)

Course 3: Start - 1 - 1a - Gate - Finish (Upwind)

Course 4: Start - 1 - 1a - Gate - 1 - 1a - Finish (Downwind)

Course 5: Start - 1 - 1a - Gate - 1 - 1a - Gate - Finish (Upwind)

Course 6: Start - 1 - 1a - Gate - 1 - 1a - Gate - 1 - 1a - Finish (Downwind)

C1.2 Marks 1 and 1a shall be rounded to port. Mark 1a is an offset mark and will be positioned to port of Mark 1. In the event Mark 1a is not in place the boats shall round Mark 1 to port

C1.3 In the event that a Gate is not in place, boats shall round the existing Leeward mark to port. Except when there is a change of course, the Gate will be positioned approximately to windward of the Race Committee Signal Boat. The Gate may be laid after the starting signal.

C1.4 Except for when there is a change of course:

- the finish for course 2, 4 and 6 will be downwind of the Gate; and
- the finish for course 3 and 5 will be upwind of Mark 1.

C2 MARKS

C2.1 Marks will be inflatable buoys as follows:

<u>Windward mark</u>	<u>Leeward mark(s)</u>	<u>Starting</u>	<u>Finishing</u>	<u>Change marks</u>
White -Yellow tetrahedron	Orange -Yellow tetrahedron	Yellow cylinder	Pink -Green tetrahedron	Yellow -Orange tetrahedron

C2.2 Offset marks will be small round yellow buoys.

C3 COURSE CHANGE

C3.1 In addition to the requirements in rule 33, the Race Committee will attempt to announce any course change on their respective circle VHF channel. Failure to make such an announcement shall not be grounds for redress. This changes rule 62.1(a).

C3.2 The new mark will be a different color from the original mark as described in SI Appendix C2.1. For a subsequent change, the new mark will be the same as the original mark.

C4 THE FINISH

C4.1 The finishing line will be between a staff displaying a blue flag on a Race Committee Boat and the finishing mark.

- For Course "~~W~~", ~~with an odd number of legs~~ 3 or 5, the finishing line will be located approximately 0.1 NM to windward of the windward mark.
- For Course "~~W~~", ~~with an even number of legs~~ 2, 4 or 6, the finishing line will be located approximately 0.1 NM to leeward of the leeward mark and the finishing mark will be on the opposite side of the Race Committee Signal Boat from the starting mark.

C4.2 The Race Committee will attempt to announce a subsequent race on the circle VHF channel.

C4.3 In fog at the finish, the Race Committee Boat may ring a bell rapidly, for approximately 5 seconds, at intervals. The same Race Committee Boat may or may not start and finish each race.

C5 SCHEDULE OF RACES

No more than five Stadium Sailing Races will be run on a given day.

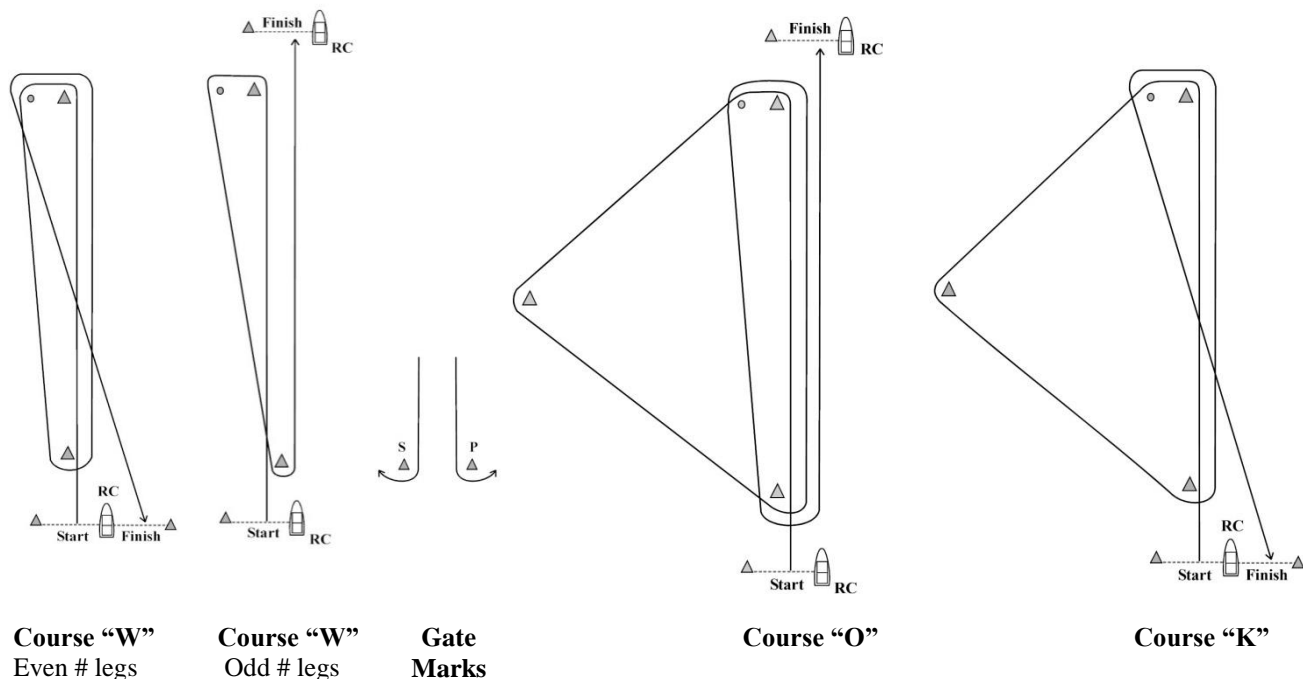
SAILING INSTRUCTIONS

Appendix D – DROP MARK RACES

Wednesday-Saturday, July 13-16

D1 COURSES FOR DROP MARK RACES

D1.1 Course Diagrams



D1.2 **Course “W”** is a Windward/Leeward course with a windward offset mark. A numeral pennant indicating the number of **LEGS** to be raced will be flown beneath Flag “W”. The distance between the windward mark and the offset mark shall not count as a leg for the purposes of indicating the number of legs.

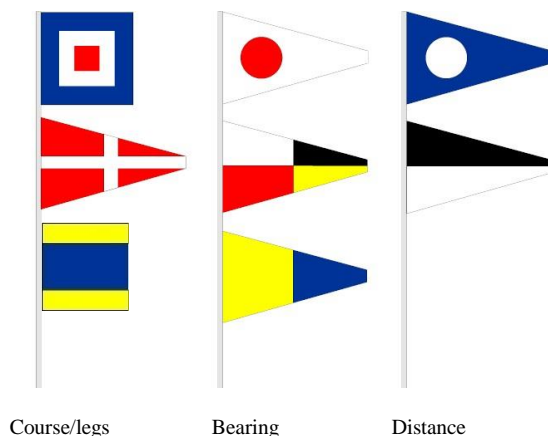
D1.3 **Course “O”** is a Triangle/Windward/Leeward/Windward course.

D1.4 **Course “K”** is a Triangle/Windward/Leeward course.

D1.5 The leeward mark for Courses “W”, “O”, and “K” will be an inflatable mark(s) set approximately 0.10 NM to windward of the starting line. A gate mark may be used for Course “W”.

D1.6 The course designation, distance and bearing to the windward mark will be signaled using flags displayed on poles. The course designation will be flown forward, followed by the three numeral pennants designating the magnetic bearing to the first mark, followed by the two numeral pennants designating distance (nautical miles and tenths) to the first mark.

<bow of RC



Example shown: Course W4 with a long windward mark (see SI D1.9); windward mark 195° at 3.6 nm

D1.7 Marks, including the windward offset mark, shall be rounded in order and always left to port, except that a gate, when used, shall be rounded as described in rule 28.1(c).

D1.8 There will be a windward offset mark adjacent to the windward mark for all drop mark courses except as noted in SI Appendix D1.9(c).

D1.9 Long Windward Mark:

- a) For course “W” with an even number of legs, the Race Committee may set a long windward mark and a short windward mark.
- b) The distance displayed will be to the SHORT windward mark. The long windward mark will be on the same bearing at a distance of 1.0 NM beyond the short windward mark.
- c) There will be no offset mark at the long windward mark.
- d) If flag “D” is displayed below the course signals (see diagram on previous page), that class will use the LONG windward mark for each weather leg in that race. If flag “D” is NOT displayed below the course signals, that class will use the SHORT windward mark for each weather leg in that race.



This changes the diagrams in SI Appendix D1.1, as well as SI Appendix D1.2, D1.7, D1.8 and D2.2.

D1.10 Special Finish Mark “F”

If flag “F” is displayed on a separate pole, the finishing line for that class will be between a staff displaying a blue flag on a Race Committee Boat and an ORANGE finishing mark approximately 0.4 NM north of the Fl R 6 sec Horn “2” on the northern point of Fort Adams. In the absence of the Race Committee Boat and/or finishing mark, the finishing line will be on a bearing of 120° from G “3” Gong southeast of Rose Island. This changes the diagrams in SI Appendix D1.1, as well as SI Appendix D1.2, D1.7 and D2.1.



D2 MARKS FOR DROP MARK COURSES

D2.1 Marks will be inflatable buoys (except as noted) as follows:

<u>Circle</u>	<u>Original marks</u>	<u>Starting</u>	<u>Finishing</u>	<u>Offset</u>	<u>Change marks</u>
WHITE	Yellow	Orange	Green	Orange dumpy	Orange
BLUE	Yellow	Orange	Pink	Orange dumpy	Orange
GREEN	Yellow	Yellow Cylinder	Pink	Yellow dumpy	Orange

D2.2 Offset marks will be small round ~~orange~~-buoys.

D3 COURSE CHANGE

D3.1 In addition to the requirements in rule 33, the Race Committee will attempt to announce any course change on their respective circle VHF channel. Failure to make such an announcement shall not be grounds for redress. This changes rule 62.1(a).

D3.2 The new mark will be a different color (orange or yellow) from the original mark as described in SI Appendix D2.1. For a subsequent change, the new mark will be the same as the original mark.

D4 THE FINISH

D4.1 The finishing line will be between a staff displaying a blue flag on a Race Committee Boat and the finishing mark.

- a) For Course “W”, with an odd number of legs, and Course “O”, the finish line will be located approximately 0.1 NM to windward of the windward mark.
- b) For Course “W”, with an even number of legs, and Course “K”, the finish line will be located approximately 0.1 NM to leeward of the leeward mark and the finishing mark will be on the opposite side of the Race Committee Signal Boat from the starting mark. See diagrams in SI Appendix D1.1.

D4.2 If a subsequent race is to be sailed, the finish line Race Committee Boat intends to fly Pennant “Second Substitute” with the Blue “On-Station” signal at the finish. If a Class Flag is displayed below Pennant “Second Substitute” the subsequent race is for that class(es) only. In addition, the Race Committee will attempt to announce a subsequent race on their respective circle VHF channel.

D4.3 In fog at the finish, the Race Committee Boat may ring a bell rapidly, for approximately 5 seconds, at intervals. The same Race Committee Boat may or may not start and finish each race.

D5 SCHEDULE OF RACES

No more than three Drop Mark Races will be run on a given day.

SAILING INSTRUCTIONS

Appendix E – J/109 CLASS REQUIREMENTS

Wednesday-Saturday, July 13-16

In accordance with NOR 2.2 and SI 1.12, this Appendix to the Sailing Instructions pertains to *J/109s* participating in their 2016 North American Championship to be held as part of NYYC Race Week at Newport presented by Rolex. Where there is a conflict between this Appendix and the Notice of Race or Sailing Instructions, this Appendix shall prevail. This changes RRS 63.7.

- E1 Regatta Designation:** This regatta will be the 2016 North American Championship for the *J/109* Class.
- E2 Race Documents:** Race documents are posted on the regatta website at <http://nyyc.org/yachting/racing/2016-nyyc-race-week>. The *J/109* Class Rules are posted on the Class website at <http://www.j109.org>.
- E3 Entry:** Entry shall be made online at the regatta website.
- E4 Registration:** Registration will be held at the New York Yacht Club Sailing Center from 1500-1800 on July 12, 2016.
- E5 Liability Waiver/Media Release:** All crew members are required to submit a completed liability waiver/media release prior to racing. The online form can be found on the regatta website.
- E6 Sail & Boat Inspection:** Sail measurement and inspection and boat inspection shall be conducted by the Class on July 12, 2016 at the Sail Newport piers in accordance with a schedule to be announced and sails and boats may be inspected/measured at any other time during the regatta at the discretion of a Class Representative. All sails delivered on or after September 1, 2006 shall have class royalty tags. Sails delivered before September 1, 2006 shall have a Sail Declaration from the sail maker. Owners should confirm prior to this event that each sail they plan to use has been properly registered with the class treasurer using the sail tag list on the *J/109* Class website. Owners are encouraged to declare the sails they intend to race with by July 9, 2016 to facilitate sail measurement on July 12, 2016. Class rule 5.3 allows one main, two jibs and two spinnakers. The owner may submit this information by logging into the yachtscoring.com website for this event and selecting *Owner's Corner*, then selecting *My Sail Inventory* on the menu. The sail type should be selected and the sail royalty tag number should be recorded in the field labeled *Class Button*. Additional information in the other fields may also be submitted if desired.
- E7 Initial Crew Declaration and Crew Substitution:** Not later than the time of registration for each boat, the skipper shall declare the crew with whom he or she expects to sail during the regatta and shall enter the name and ISAF registration number and estimated weight for each crew on the “owner’s corner” of the yachtscoring.com web site page for the regatta. The declaration shall include the names, ISAF registration numbers and estimated weights of any substitute crew that the skipper expects to use during the regatta, as well as the names of the crew to be replaced. If a skipper thereafter needs to provide for additional substitute crew, the skipper shall (i) enter such substitute crew member’s name, crew position and ISAF registration number on the “owner’s corner” page of the yachtscoring.com website for this event and (ii) notify a Class Representative in writing of the name, crew position, ISAF Competitor Classification and estimated weight of the substitute crew and the name of the crew to be replaced not later than 0830 on the first day on which the substitute crew will sail. All substitute crew shall be weighed in (i) if practical, not later than 0930 on the morning of the first day on which the substitute is to sail on the boat and (ii) in any event, prior to 0930 on the last day of racing, which is scheduled to be July 16, 2016. If as a result of a weigh-in after a substitute crew sails on a boat it is found that the boat’s crew weight exceeded the limit specified in *J/109* Rule 6.2, the boat shall be disqualified from each race for which the maximum crew weight was exceeded. Persons who sail as crew or driver on one boat during the regatta may not thereafter serve as crew or driver on another boat unless the first boat has withdrawn from the regatta. Any questions under this paragraph 7 and paragraph 10 shall be resolved by the Class Representatives not involved in the matter and their determination shall be final.
- E8 Crew Size & Weigh-in:** *J/109* Rule 6.2 shall apply to this regatta and *J/109* Rule 6.1 shall not apply. Crew are required to weigh in at registration. Total weight of crew (excluding the driver) in swimming apparel, shall not exceed 550 kilos (1213 pounds). Declared crew substitutes may weigh in each morning of racing prior to 0930.
- E9 Membership and Eligibility:** All skippers and drivers shall be Voting Members or Associate Members of the *J/109* Class and shall be listed as 2016 Voting or Associate Members on the *J/109* website.

- E10 ISAF Classification:** Each skipper, driver, and crew member shall have a current ISAF Competitor Classification, available at www.sailing.org/classification and shall meet the ISAF eligibility requirements of *J/109* Rules 2.2-2.4. Skippers are required to enter their crew members' names and ISAF registration numbers into the crew list found within the "owners corner" of the yachtscoring.com web site for this event.
- E11 Special Corinthian Trophy:** In addition to the trophies specified in the Notice of Race, the *J/109* Class intends to award a Corinthian trophy at the awards ceremony to the *J/109* with the best regatta score that meets the following criteria:
- Entire crew, including skipper, driver and other crew members must hold an ISAF Competitor Classification 1 (*i.e.*, no Competition Category 3 crew on board).
 - Each sail used in the regatta must be greater than two years old, as determined by the delivery date on the sail royalty tag being earlier than July 13, 2014.
- E12 Class Representatives:** The Class Representatives for this regatta for the *J/109* Class shall be the *J/109* Class officers participating in the regatta.

SAILING INSTRUCTIONS

Appendix F – C&C 30 CLASS REQUIREMENTS

Wednesday-Saturday, July 13-16

In accordance with NOR 2.2 and SI 1.14, this Appendix to the Sailing Instructions pertains to C&C 30s participating in their 2016 North American Championship to be held as part of NYYC Race Week at Newport. Where there is a conflict between this Appendix and the Notice of Race or Sailing Instructions, this Appendix shall prevail. This changes RRS 63.7.

F1 Regatta Designation: This regatta will be the 2016 North American Championship for the C&C 30 Class.

F2 Race Documents: Race documents are posted on the regatta website at <http://nyyc.org/yachting/racing/2016-nyyc-race-week>. The C&C 30 Class Rules are posted on the Class website at <http://c-cyachts.com/wp-content/uploads/2016/02/CC30-Class-Rules-2016a.pdf>.

F3 Entry: Entry shall be made online at the regatta website.

F4 C&C 30 OD Class Rules 2015 Revision A of Section J are invoked as follows:

- a) Rule J.3 shall apply at all times.
- b) Rule J.4 shall only apply for a race sailed under Appendix A – Distance/Coastal Race.

SAILING INSTRUCTIONS

Appendix G – SWAN 42 CLASS REQUIREMENTS

Wednesday-Saturday, July 13-16

In accordance with NOR 2.2 and SI 1.15, this Appendix to the Sailing Instructions pertains to *Swan 42s* participating in their 2016 National Championship to be held as part of NYYC Race Week at Newport. Where there is a conflict between this Appendix and the Notice of Race or Sailing Instructions, this Appendix shall prevail. This changes RRS 63.7.

- G1 Regatta Designation:** This regatta will be the 2016 National Championship for the Swan 42 Class.
- G2 Race Documents:** Race documents are posted on the regatta website at <http://nyyc.org/yachting/racing/2016-nyyc-race-week>. The *Swan 42* Class Rules are posted on the Class website at <http://swan42.org/images/stories/pdf/2016classrules.pdf>.
- G3 Entry:** Entry shall be made online at the regatta website.
- G4** Class Rule 6.2.1 is in effect. One-design inshore sails shall be used for all racing including the distance race if run.
- G5** RRS 44.1 and 44.2 are changed so that, except for infringements of Part 2 that occur within the zone of a rounding mark or finishing mark, only one turn, including one tack and one gybe, is required. If a Swan 42 fouls a boat from another class, then she shall comply with the penalty prescribed in the sailing instructions regarding such infringement.

SAILING INSTRUCTIONS

Appendix H – ADDITIONAL MARKS

Wednesday-Saturday, July 13-16

H1 ADDITIONAL MARKS

H1.1 In addition to all buoys listed on the 2015-2017 South Bay Race Chart provided at registration, the marks listed in SI Appendix H2 and H3 below are the designations for additional rounding marks that might be used.

H1.2 The South Bay Race Chart is to be used for informational purposes only and should not be used for navigation.

H2 SPECIAL MARKS

H2.1 Special Mark “E”

- The Race Committee may add a new first mark “E” to a course described in SI Appendix A – Distance/Coastal Race or SI Appendix B – Navigators Race courses.
- If special mark “E” is used, the Race Committee will display flag “E” over a GREEN flag (round special mark “E” to STARBOARD) or over a RED flag (round special mark “E” to PORT).
- In a Navigators Race course, the Race Committee will also list “E” as the first mark on the course board as described in SI Appendix B1(a).
- The magnetic bearing and distance (in nautical miles to the nearest tenth) to special mark “E” will be posted on a white board on the Race Committee signal boat.
- Mark “E” will be a ~~WHITE~~-YELLOW tetrahedron buoy.



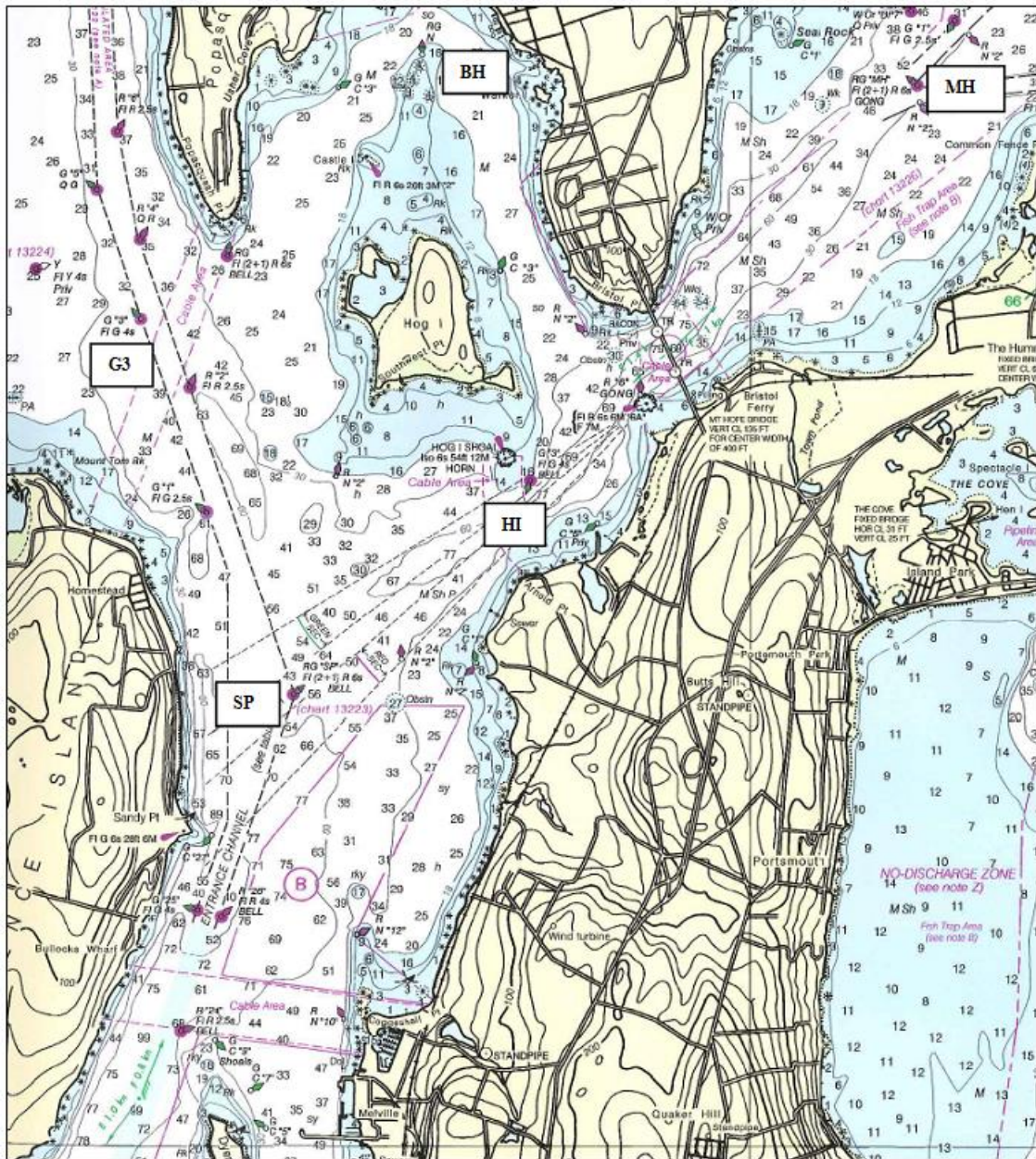
H2.2 Special Mark “L” (applies to SI Appendix B – Navigators Race only)

- The Race Committee may set special mark “L” approximately 0.1 NM to windward of the start line.
- If special mark “L” is used, it will be listed as a mark as described in SI Appendix B1(a).
- Special mark “L” will be a ~~WHITE~~-YELLOW tetrahedron buoy

H3 MARKS

See charts 13205, 13218, 13223, 13226 and 13224 for more detail.

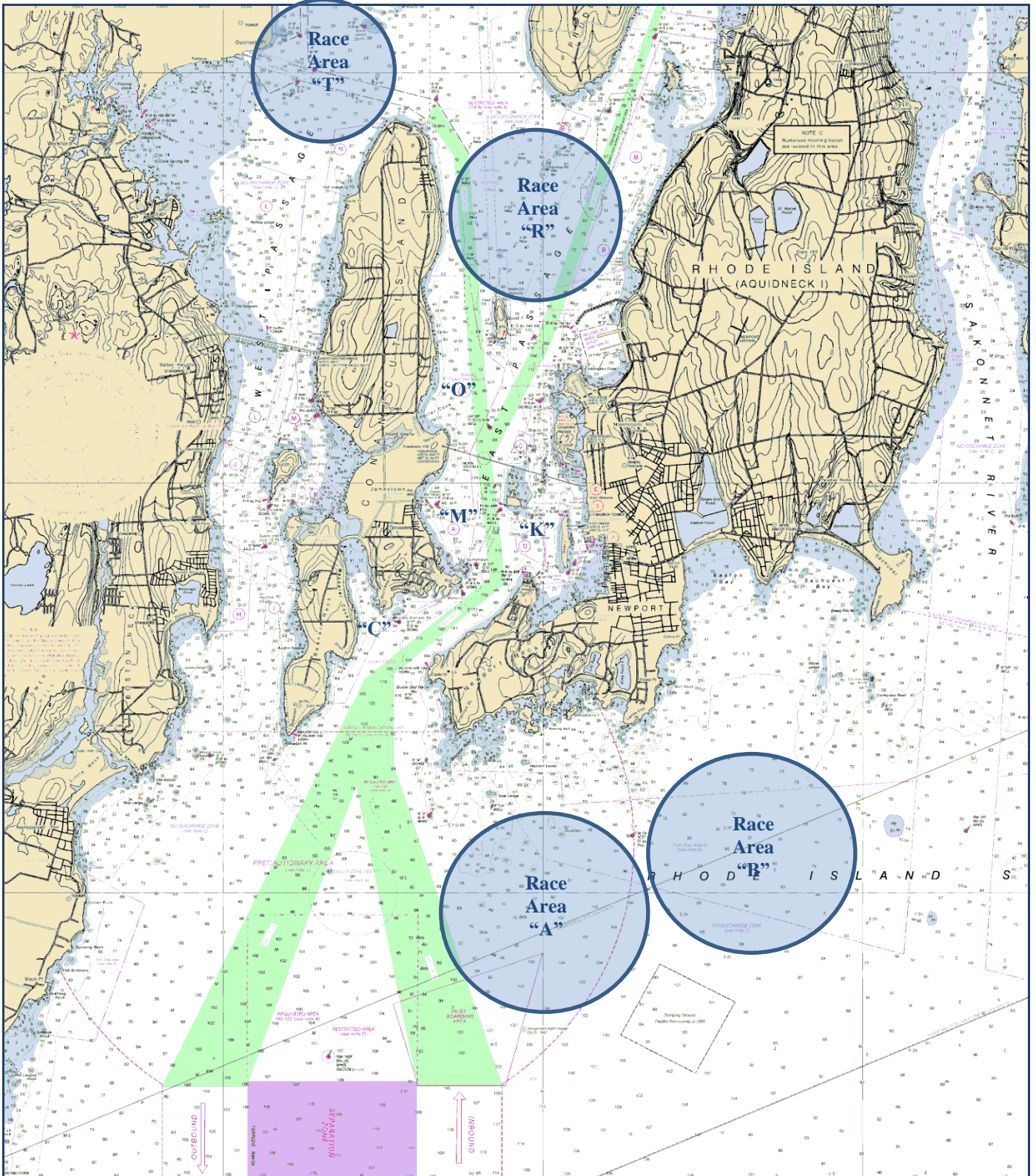
	<u>Description</u>	<u>Approx. location</u>
A	Gould Island	41° 32.00' N; 071° 20.67' W (center of island)
B	Hope I (east of Quonset) including R “2” at the southwest end and G C “1” at the northeast end	
C	Conanicut Island	
D	RW “NB” Mo(A) WHIS	41° 23.00' N; 071° 23.36' W
G	R “2” Fl R 4s WHIS south of Point Judith	41° 18.46' N; 071° 28.35' W
H	RW “SR” Mo(A) WHIS	41° 25.76' N; 071° 13.38' W
1BI	G “1 BI” Fl G 4s BELL north of Block I	41° 15.49' N; 071° 34.55' W
M	Block Island including:	
	R “4” Fl R 6s WHIS off Southwest Pt	41° 08.73' N; 071° 37.35' W
	Black Rock Pt. Buoy 2	41° 08.42' N; 071° 35.74' W
U	Buzzards Light Tower Fl 2.5s 67ft 17M Horn	41° 23.82' N; 071° 02.08' W
SP	RG “SP” Fl (2+1) R 6s BELL	41° 36.92' N; 071° 17.59' W
G3	G “3” Fl G 4s (approx. 0.5 NM sw of Popasquash Neck)	41° 38.53' N; 071° 18.46' W
MH	RGR “MH” Fl (2 +1) R 6s GONG in Mt. Hope Bay	41° 39.54' N; 071° 14.04' W
BH	RGR N “Middle Ground Buoy” approx. 0.8 NM n of Hog I	41° 39.68' N; 071° 16.87' W
HI	G “3” Fl G 4s BELL approx. 0.4 NM southeast of Hog I	41° 37.79' N; 071° 16.29' W



Marks near Prudence Island, Bristol and Mt. Hope Bay

SAILING INSTRUCTIONS

Appendix I – NYYC PRIMARY RACE AREAS



SAILING INSTRUCTIONS

Appendix J – M32 SPECIAL INSTRUCTIONS

Thursday-Saturday, July 14-16

In accordance with NOR 2.2 and SI 1.16, this Appendix to the Sailing Instructions pertains to the M32 Class in the Race Week at Newport presented by Rolex. Where there is a conflict between this Appendix and the Notice of Race or Sailing Instructions, this Appendix shall prevail. This changes RRS 63.7.

J1 CHANGES TO THE SAILING INSTRUCTIONS

J1.1 CHANGE SI 1.5 (a) to read:

- 1.5 a) All crew members shall wear approved non-inflatable PFDs at all times while racing and carry helmets on board at all times.

J1.2 DELETE SI 4.5 and SI 4.6 and REPLACE with SI 4.5 to read:

- 4.5 Each yacht shall fly the Rolex flag provided at registration from her starboard shroud. Each yacht shall display the Rolex stickers provided at registration on the inside of each bow. No class flag is required to be flown.

J1.3 CHANGE SI 9 and REPLACE with:

9 THE START

The starting sequence will be as follows:

4:00	Warning Signal	Class flag ↑	Sound signal
3:00	Preparatory Signal		Sound signal
2:00			Sound signal
1:00			Sound signal
0:00	Start	Class flag ↓	Sound signal

J2 CLASS RULES

The following Class documents are posted on the [Race Week website](#):

- [Class Rules](#)
- [Class Fleet Racing Addendum U](#) v7 (note that this Addendum may be updated by the Class)
- [Class Fleet Racing guide to tacticians](#)

J3 COURSE & MARKS

J3.1	The course is:	<u>Mark</u>	<u>Color/shape</u>	<u>Required side</u>
		Start	Yellow	
		Mark 1 Reach	Yellow conical	leave to port
		Leeward Gate	Green conical	gate
		Windward Gate	Blue conical	gate
		Leeward Gate	Green conical	gate
		Mark 1 Reach	Yellow conical	leave to starboard
		Finish	Yellow	

J3.2 The course diagram on the following page shows approximate angles and distances. The angles and distances may vary depending on the wind strength or other factors.

J3.3 The Race Committee will not signal any course flag.

