

# 2016 International 505 East Coast Championship



Annapolis, MD, USA, September 15-18, 2016

## SAILING INSTRUCTIONS

The co-organizing authorities (OA) are Severn Sailing Association (SSA) and Eastport Yacht Club (EYC).

**Event website:** <http://505worlds2017.com>

### 1 RULES

- 1.1 The regatta will be governed by the rules as defined in The Racing Rules of Sailing (RRS).
- 1.2 Boats may not protest other boats for breaking sailing instructions (SI) marked **[NP]** or the US Sailing prescription to RRS 40. This changes RRS 60.1(a). Penalties for breaking SI marked **[DP]**, class rules, or RRS 55 may be less than disqualification if the protest committee so decides.
- 1.3 **[NP] [DP]** RRS 40 is replaced with: "Competitors shall wear personal flotation devices, at all times when on the water, except briefly while changing or adjusting clothing or personal equipment. Wet suits and dry suits are not personal flotation devices. Inflatable flotation devices are not acceptable."

### 2 NOTICES TO COMPETITORS

- 2.1 Notices to competitors will be posted on the official notice board located under the outer staircase on the lower level of the SSA clubhouse.
- 2.2 A daily competitor and coach meeting will be held on the steps of the SSA clubhouse 2 hours before the scheduled warning signal for the first race of each day of the regatta.

### 3 CHANGES TO SAILING INSTRUCTIONS

- 3.1 Any change to the schedule of races will be posted by 2000 on the day before it will take effect.
- 3.2 Any other change to the sailing instructions will be posted no later than 90 minutes before the scheduled warning signal for the first race on the day it will take effect.

### 4 SIGNALS MADE ASHORE

- 4.1 Signals made ashore will be displayed on the flagpole in front of the SSA clubhouse.
- 4.2 When flag AP is displayed ashore, '1 minute' is replaced with 'not less than 60 minutes' in RRS "Race Signals".

### 5 SCHEDULE OF RACES

- 5.1 9 races are scheduled for the regatta.
- 5.2 The race committee may run up to 4 races per day.
- 5.3 The warning signal for the first race of the day will be 1200 on Friday, September 16 and 1100 on Saturday, September 17 and Sunday, September 18.
- 5.4 No warning signal will be made after 1500 on Sunday, September 18.

### 6 CLASS FLAG

- 6.1 The class flag will be a flag with the International 505 logo.

## **7 RACING AREAS**

The racing area will be on the Chesapeake Bay off the mouth of the Severn River as shown in Attachment A.

## **8 COURSES**

- 8.1 Courses are shown in Attachment B.
- 8.2 No later than the warning signal, the race committee signal boat will display the course and approximate compass bearing to mark 1.
- 8.3 If one of mark 3s or 3p is missing, boats shall round the remaining gate mark to port.

## **9 MARKS**

- 9.1 Marks 1, 2, 3s, and 3p will be orange cylinders. Mark 1a will be a smaller orange cylinder.
- 9.2 As provided in SI 13, new marks 1 and 2 will be green tetrahedrons, new marks 3s and 3p will be orange tetrahedrons.
- 9.3 For the gate start, the starting marks will be the port limit mark (small orange cylinder laid close to the race committee signal boat), the pathfinder, and the gate boat (displaying flag G).
- 9.4 For the fixed line start, the starting marks will be race committee boats at each end of the line.
- 9.5 The finishing marks will be a race committee boat on one end and a red cylinder on the other end.

## **10 THE START**

- 10.1 Races will be started using RRS 26.
- 10.2 Races will be started either by a gate start or a fixed line start. The race committee will attempt to use a gate start whenever reasonably possible.
- 10.3 The race committee signal boat will display the type of start no later than the warning signal. Flag G signifies a gate start (SI 11). Flag F signifies a fixed line start (SI 12).
- 10.4 To alert boats that a race will begin soon, an orange flag will be displayed, with one sound at least five minutes before a warning signal is displayed.

## **11 GATE START (FLAG G)**

- 11.1 If a boat breaks an instruction marked **[GP]** and is identified, she will be disqualified without a hearing, even if the race is restarted, re-sailed, or rescheduled. If a general recall is signaled or the race is abandoned after the starting signal, the race committee will display her sail number before the next warning signal for that race, and if the race is restarted or resailed she shall not sail in it. If she does so she shall be scored DNE. This changes RRS 36 and 63.1.
- 11.2 Prior to the warning signal, the race committee signal boat will display the approximate time in seconds between the starting signal and the time at which the gate boat will stop at the starboard end of the starting line.
- 11.3 The race committee will appoint the pathfinder. The pathfinder will normally be the first boat 7th place or later in the previous race that is able to race and has not yet served as a pathfinder.
- 11.4 The sail number of the pathfinder will be posted on the official notice board for the first scheduled race of the day. For subsequent races each day, the sail number of the pathfinder will be posted on the race committee signal boat, as soon as practical after the completion of the previous race.

- 11.5 **[NP]** Prior to the preparatory signal the pathfinder shall report to the gate boat (displaying flag G and located near the race committee signal boat) and follow the race committee's instructions. If the pathfinder fails to do so, she shall be scored DNS for that race. This changes RRS 63.1.
- 11.6 **[NP]** Shortly before the starting signal the pathfinder will position itself near the port limit mark and as soon as practical after the starting signal (and within 10 seconds) will sail from the port limit mark on a close-hauled port tack. The gate boat will keep station close astern and slightly to leeward of the pathfinder.
- 11.7 The starting line (except for the pathfinder) will be between the port limit mark and the center of the stern of the gate boat.
- 11.8 **[GP]** All boats (except for the pathfinder) shall start by crossing the starting line on starboard tack after the starting signal and before the gate closes.
- 11.9 **[GP]** A boat that has not already started correctly, and that is on the course side of the gate boat while the gate is open, shall not cross the starting line from the course side.
- 11.10 **[NP]** The pathfinder shall sail a close-hauled course until it is released by hail from the gate boat, after which the pathfinder has started, ceases to be a starting mark, and may continue or tack onto starboard tack.
- 11.11 After the release of the pathfinder, the gate boat will continue its course and speed until the gate has been opened for the period signaled in SI 11.1 (this may be extended at the discretion of the race committee). It will then stop, make a long sound signal, drift for at least one minute, and signal the close of the gate by lowering flag G with a short sound signal.
- 11.12 **[NP]** A boat that has not started at the close of the gate will be scored DNS without a hearing. This changes RRS A4.
- 11.13 **[GP]** After the preparatory signal, a boat shall not threaten the unobstructed sailing of the pathfinder, and shall not interfere with or try to pass between the pathfinder and the gate boat, or cause another boat to interfere in these ways.

## **12 Fixed Line Start (Flag F)**

- 12.1 The starting line will be between staffs displaying an orange flag on the race committee boats at each end of the line.
- 12.2 A buoy may be attached to the race committee signal boat anchor line just below keel depth. This buoy is considered part of the race committee's anchor line.
- 12.3 If flag U has been displayed as a preparatory signal, no part of a boat's hull, crew or equipment shall be in the triangle formed by the ends of the starting line and the first mark during the last minute before her starting signal. If a boat breaks this rule she will be disqualified without a hearing but not if the race is restarted or resailed or postponed or abandoned before the starting signal. This changes RRS 26. When flag U is used as a preparatory signal, RRS 29.1 Individual recall does not apply. The scoring abbreviation for a flag U penalty is UFD.
- 12.4 **[NP]** A boat starting later than 5 minutes after her starting signal will be scored DNS without a hearing. This changes RRS A4.

## **13 CHANGE OF THE NEXT LEG OF THE COURSE**

To change the next leg of the course, the race committee will lay a new mark (or move the finishing line) and remove the original mark as soon as practicable. When in a subsequent change a new mark is replaced, it will be replaced by an original mark.

## **14 THE FINISH**

The finishing line will be between the staff displaying orange flag on the race committee finishing boat and the course side of the pin-end finishing mark.

## **15 TIME LIMITS AND TARGET TIMES**

- 15.1 If no boat has passed mark 1 within 30 minutes of the start, the race will be abandoned.
- 15.2 If no boat sails the course and finishes within 90 minutes, the race will be abandoned.
- 15.3 Boats still racing and failing to finish within 20 minutes after the first boat sails the course and finishes, and not subsequently retiring, penalized or given redress, will be scored TLE (Time Limit Expired, see SI 18) without a hearing. This changes RRS 35, 63.1, A4 and A5.

## **16 PENALTY SYSTEM**

- 16.1 RRS/US Appendix T, Section B (Post-Race Penalties) will apply.

## **17 PROTESTS AND REQUESTS FOR REDRESS**

- 17.1 Protest forms are available at the protest desk located on the 2nd floor of the SSA Clubhouse. Protests and requests for redress or reopening shall be delivered there within the appropriate time limit.
- 17.2 The protest time limit is 60 minutes after the official arrival of the race committee signal boat at the dock. The race committee will post its official arrival time on the notice board.
- 17.3 Notices will be posted on the official notice board no later than 30 minutes after the protest time limit to inform competitors of hearings in which they are parties or named as witnesses and the location of the hearing. Hearings will be held as soon as practical after sailing.
- 17.4 Notices of protests by the race committee or protest committee will be posted on the official notice board to inform boats under RRS 61.1(b).
- 17.5 On the last scheduled day of racing a request for reopening a hearing shall be delivered
  - (1) within the protest time limit if the requesting party was informed of the decision on the previous day;
  - (2) no later than 30 minutes after the requesting party was informed of the decision on that day.This changes RRS 66.
- 17.6 On the last scheduled day of racing a request for redress based on a protest committee decision shall be delivered no later than 30 minutes after the decision was posted. This changes RRS 62.2.

## **18 SCORING**

- 18.1 1 race shall be completed to constitute a series.
- 18.2 (1) When fewer than 5 races have been completed, a boat's series score will be the total of her race scores.
  - (2) When 5 or more races have been completed, a boat's series score will be the total of her race scores excluding her worst score.
- 18.3 The score (prior to application of other penalties) for boats scored TLE will be scored points equal to the number of boats that sail the course and finish within the finishing window plus two points by the race committee without a hearing. This changes RRS A4.2, A5, and A11.

## **19 [DP] [NP] SAFETY REGULATIONS**

- 19.1 Check-out and check-in: When departing from launching area, boats shall pass between SSA and Green Can "SC1" at the entrance to Spa Creek (leaving "SC1" to port). Mainsails should be up to allow identification of all boats. Likewise, when returning to the harbor, boats shall leave "SC1" to starboard.
- 19.2 A boat that retires from a race shall notify the race committee as soon as possible.
- 19.3 If the race committee signals flags N over A or N over H, all boats shall return to the harbor immediately.
- 19.4 While afloat, all boats shall carry a towline of at least 6mm in diameter and 10 meters in length.
- 19.5 A boat may not exercise right of way, cross in proximity to, or interfere with reasonable transit of the race area by commercial ships, tugs, or barges. Boats must take evasive action well in advance of a potentially dangerous situation. The US Coast Guard, ship captains, and bay pilots have been encouraged to report any incident they observe.
- 19.6 The race committee or protest committee may protest a boat for breaking SI 19.5 based on information received from any source. The protest time limit does not apply. This changes RRS 60.2, 60.3, and 61.3.

## **20 [DP] REPLACEMENT OF CREW OR EQUIPMENT**

- 20.1 Substitution of competitors will not be allowed without prior written approval of the race committee.
- 20.2 Substitution of damaged or lost equipment will not be allowed unless authorized by the race committee. Requests for substitution shall be made to the race committee at the first reasonable opportunity.

## **21 EQUIPMENT AND MEASUREMENT CHECKS**

A boat or its equipment may be inspected by an equipment inspector or measurer at any time for compliance with the class rules and sailing instructions. On the water, a boat can be instructed by an equipment inspector or measurer to proceed immediately to a designated area for inspection.

## **22 [DP] SUPPORT BOATS**

- 22.1 All coach/support boats shall comply with the Support Boat Regulations published on the event website.
- 22.2 Competitors shall not have any contact whatsoever with an unregistered coach/support boat from the time a boat leaves the harbor until returning to the harbor after racing. This includes coach/support boats whose registration has been revoked by the organizing authority or race committee.

## **23 [DP] TRASH DISPOSAL**

Boats shall not intentionally put trash in the water. Trash may be placed aboard support and race committee boats. RRS 41 is changed to permit a boat to place trash on a race committee boat after her preparatory signal.

## **24 [DP] BERTHING**

When ashore, all boats must be stored on their dollies within their assigned spaces at SSA. While sailing, boats' dollies must be stored in the assigned spaces.

## 25 [DP] RADIO COMMUNICATION

- 25.1 The race committee intends to use VHF radio channel 65A to communicate information to competing and/or support boats. Competitors are encouraged to carry VHF radios for safety.
- 25.2 Except in an emergency, a boat shall neither make radio transmissions while racing nor receive radio communications not available to all boats. This restriction also applies to mobile telephones.

## 26 PRIZES

- 26.1 Prizes will be awarded to at least the top five teams overall.
- 26.2 Perpetual awards will also be awarded in accordance with the 505 traditions.

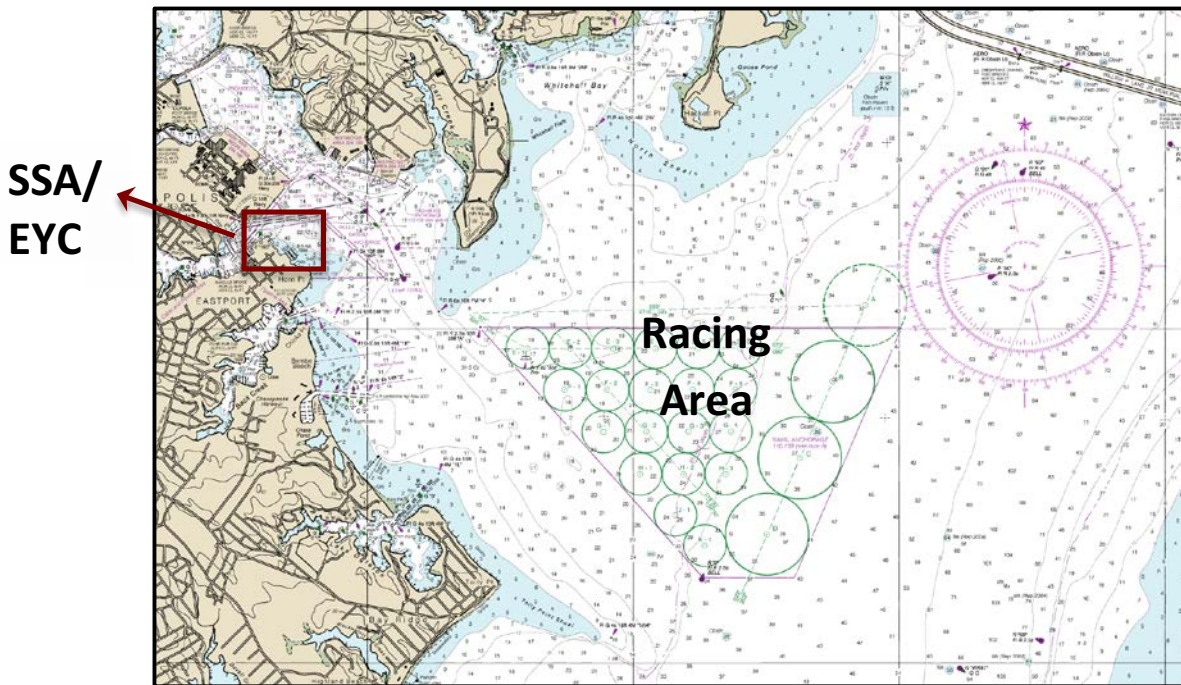
## 27 DISCLAIMER OF LIABILITY

Competitors participate in the regatta entirely at their own risk. See RRS 4, Decision to Race. The organizing authority will not accept any liability for material damage or personal injury or death sustained in conjunction with or prior to, during, or after the regatta.

## 28 INSURANCE

Each participating boat shall be insured with valid third-party liability insurance with a minimum cover of \$300,000 USD per event or the equivalent.

## ATTACHMENT A - RACING AREA



# ATTACHMENT B - COURSES

<p><b>COURSE TW</b>          Mark rounding order:          Start-1-1a-3s/3p-1-2-3p-1-1a-3s/3p -Finish</p>	<p><b>COURSE W2, W3</b>          Mark rounding order:  <b>W2:</b> Start-1-1a-3s/3p-1-1a-3s/3p-Finish  <b>W3:</b> Start-1-1a-3s/3p-1-1a-3s/3p-1-1a-3s/3p-Finish</p>
<p>The diagram for Course TW shows a 'Gate Start Area' with two gates labeled '3s' and '3p'. A long leg leads to a mark labeled '2'. A short leg leads to a mark labeled '1a' and '1'. The course ends at a 'Finish' line.</p>	<p>The diagram for Course W2, W3 shows a 'Gate Start Area' with two gates labeled '3s' and '3p'. A short leg leads to a mark labeled '1a' and '1'. The course ends at a 'Finish' line.</p>
<p><b>COURSE TL</b>          Mark rounding order:          Start-1-1a-3s/3p-1-2-3p-1-1a-3p -Finish</p>	<p><b>COURSE L2, L3</b>          Mark rounding order:  <b>L2:</b> Start-1-1a-3s/3p-1-1a-3p-Finish  <b>L3:</b> Start-1-1a-3s/3p-1-1a-3s/3p-1-1a-3p-Finish</p>
<p>The diagram for Course TL shows a 'Gate Start Area' with two gates labeled '3s' and '3p'. A long leg leads to a mark labeled '2'. A short leg leads to a mark labeled '1a' and '1'. The course ends at a 'Finish' line.</p>	<p>The diagram for Course L2, L3 shows a 'Gate Start Area' with two gates labeled '3s' and '3p'. A short leg leads to a mark labeled '1a' and '1'. The course ends at a 'Finish' line.</p>