



1 RULES

1.1 The regatta will be governed by the rules as defined in The Racing Rules of Sailing (rules).

1.2 No national prescriptions will apply.

1.3 The US Safety Equipment Requirements (USSER) Nearshore shall apply for all boats except one-design and beach cats. These requirements are posted on the website.

1.4 The following rules shall apply:

- a) For CSA boats:
 - The Caribbean Sailing Association (CSA) Rule (www.caribbean-sailing.com);
- b) For IRC boats:
 - The 2017 IRC Rule, Parts A, B & C. (www.ircrating.org)
 - IRC Rules 21.1.5 (d), (e) and (f) are changed as follows: During the regatta, the sails carried (including mainsails and spinnakers) may vary from day to day, but shall remain the same for each individual race day, including days with multiple races even in the case of damages to sails. Competitors may change mainsails or substitute spinnakers on consecutive days as long as all such sails are within the dimensions declared on their IRC certificate. The race day begins when the boat leaves the dock or its mooring for the race course.
- c) For Multihull boats, the CSA Multihull Rule.
- d) For Beach Cats, the Portsmouth Yardstick Rule.
- e) For One-Design classes, the relevant Class Rules, except as may be changed as permitted by rule 87.

1.5 The minimum number of crew for all classes is four except the minimum number of crew for the Beach Cats is two. For boats carrying a Regatta approved member of the press, this member of the press will not be included in the crew number provided that he/she does not contribute in any way to the boat's competitiveness, other than changing position.

1.6 The number of crew on a boat shall

remain the same for all races. In the case of an emergency, a request for an exception shall be made to the jury.

1.7 If there is a conflict between languages the English text will take precedence.

2 NOTICES TO COMPETITORS

Notices to competitors will be posted on the Official Notice Board located at the St. Thomas Yacht Club. As a courtesy, notices will also be posted on the regatta entry website at www.yachtscoring.com.

3 CHANGES TO SAILING INSTRUCTIONS

Any change to the sailing instructions will be posted before 0830 on the day it will take effect, except that any change to the schedule of races will be posted by 2000 on the day before it will take effect.

4 SIGNALS MADE ASHORE

4.1 Signals made ashore will be displayed on the flag pole at St. Thomas Yacht Club.

4.2 When flag AP is displayed ashore, '1 minute' is replaced with 'not less than 60 minutes' in the race signal AP.

5 SCHEDULE OF RACES

5.1 Races are scheduled on March 24, 25 and 26, 2017.

5.2 The scheduled time of the warning signal for the first race each day is 1100.

5.3 The daily schedule is as follows:

- a) Day 1 Friday, March 24
 - All classes are scheduled to sail a minimum of two races
 - Race 1 will start in the St. James starting area and finish in Charlotte Amalie Harbor.
 - Race 2 will start in Charlotte Amalie Harbor.
 - IC24 will finish Race 2 near Packet Rock Buoy and will start Race 3 in the same location.
- b) Day 2 Saturday, March 25
 - IC24, and Beach Cat classes are scheduled to sail up to 4 W/L races starting in the vicinity of Great Bay, followed by a short distance race. The distance race

course will be posted by 0830 and announced on VHF 71.

- Cruising Classes will start in the St. James starting area and will sail up to 2 races from the selection of the St. James, Dog Island and Buck Island courses.

- All other classes will start in the St. James starting area and will sail up to 3 races from the selection of St. James, Dog Island or distance race courses on the south side of St. John.

c) Day 3 Sunday, March 26

- IC24 class is scheduled to sail up to 4 W/L races starting in the vicinity of Great Bay, followed by a short distance race. The distance race course will be posted by 0830 and announced on VHF 71.

- All other classes will start in the St. James starting area and will sail up to 2 races from the selection of the St. James, Dog Island and Pillsbury Sound courses.

5.4 On the last day of the regatta no warning signal will be made after 1430.

6 BOAT IDENTIFICATION

6.1 Class flags will be colored flags provided by the Organizing Authority (OA). Class assignments and flags will be posted on the Official Notice Board. While racing, class flags shall be conspicuously displayed from the backstay no less than 2 meters above deck. For boats without backstays, the class flag shall be displayed from the starboard shroud or the mainsail leech or starboard lifelines.

6.2 Sponsor flags may be provided and shall be flown above the class flag or on the aft lifelines at all times during the regatta.

6.3 Bow numbers may be provided by the OA for some classes and will be issued at registration. The numbers shall be affixed to both the port and starboard sides of the bow with the leading edge of the forward number placed 20 inches aft of the bow stem and 3 inches below the deck. The aft number shall be 3 inches aft of the forward number.



6.4 Sponsor decals may be provided by the OA at registration and shall be displayed during the regatta. The decals shall be placed 6 inches aft of the bow numbers, if applicable, or otherwise in place of the bow numbers. The top of the decal shall be placed 3 inches below the deck.

6.5 Event banners may be available at registration. Competitors are encouraged to display the banner from their forestay in an appropriate manner when not racing.

6.6 Competitors are requested to respect brand exclusivity of the Regatta sponsors.

7 RACING AREAS

Appendix A shows the location of racing areas.

8 THE COURSES

8.1 The courses and course diagrams are shown in Appendix A. The diagrams are not intended to be used for navigation. All distances and mark locations are approximate. Competitors assume absolute responsibility for identifying and avoiding navigational hazards.

8.2 No later than the warning signal for each class, the race committee signal boat will display the course signals and may announce the course on the designated VHF channel.

8.3 A boat that is racing shall not cross the starting or finishing line except when maneuvering to start, starting or finishing.

9 MARKS

9.1 Distance Races: Marks may include a combination of islands, government buoys and inflatable marks as described in Appendix A. Inflatable mark shapes and colors will be posted by 0830 prior to racing each day.

9.2 Windward/Leeward: Inflatable mark shapes and colors will be posted by 0830 prior to racing each day.

9.3 Change marks may be a different color than the original mark.

10 AREAS THAT ARE OBSTRUCTIONS

In Charlotte Amalie Harbor, boats shall keep well clear of the cruise ships and cruise ship docks and shall pass to the west of all of the yellow cruise ship mooring balls.

11 THE START

11.1 Races will be started by using rule 26, except that the IC24 class, the Beach Cat class and other one-design classes will be started with the Sound-Signal Starting System described in Appendix A.

11.2 The starting line will be between a staff displaying an orange flag on the race committee signal boat and the course side of the starting mark.

11.3 Boats whose warning signal has not been made shall avoid the starting area during the starting sequence for other classes.

11.4 A boat starting later than five minutes after her starting signal will be scored DNS without a hearing. This changes rule A4 and A5.

11.5 In the event of an Individual Recall, the race committee will attempt to notify boat(s) that are OCS via the designated VHF channel. Failure to make a broadcast or broadcast it timely will not be grounds for a request for redress. This changes rule 62.1(a).

12 THE FINISH

12.1 The finishing line will be between a staff displaying a blue flag on the race committee boat and a nearby finishing mark.

12.2 If the race committee is absent when a boat finishes, she shall report her finishing time, and her position in relation to nearby boats, to the race committee at the first reasonable opportunity.

13 PENALTY SYSTEM

13.1 Except as changed by SI 13.2, a boat that may have broken a rule of Part 2 while racing may take a One-Turn Penalty at the time of the incident in compliance with rule 44.1 and 44.2, or by taking a 20% Scoring Penalty in compliance with rule 44.3. The 20% penalty shall not be less than two (2)

places. A boat that has taken a Scoring Penalty in accordance with rule 44.3, shall submit a written declaration prior to the end of Protest Time on a form available at the Jury Desk. Submitting this declaration shall satisfy the requirement to inform the race committee at the finishing line. This changes rule 44.3 Scoring Penalty.

13.2 If a boat breaks a rule of Part 2 within the three-length zone of any rounding or passing mark, her penalty shall be a Two-Turns Penalty in compliance with rule 44.2. However the penalty shall not cause the boat's score to be worse than the score of Did Not Finish.

13.3 Rule 44.1 is changed to permit a boat that has not taken a penalty for a breach of a rule of Part 2 in compliance with SI 13.1 or 13.2 to take a 40% Scoring Penalty in accordance with rule 44.3(c) by submitting a written declaration prior to the end of Protest Time on a form available at the Jury Desk. The 40% penalty shall not be less than four (4) places.

13.4 For the IC24 class on Saturday and Sunday, a jury boat may be stationed in the vicinity of the windward mark and may observe the racing. If a jury member witnesses what he or she believes to be an infringement of a rule of Part 2 or rule 31, this may be signaled with one long sound signal from a jury boat. Any member of the jury who has observed the incident will be available as a witness should the incident result in a protest hearing.

14 TIME LIMITS

14.1 The time limit on Friday and Saturday is 1700.

14.2 The time limit on Sunday is 1600.

14.3 Boats not finishing within the time limit shall be scored one point more than the number of boats that have sailed the course and finished within the time limit. This changes rule 35, A4 and A5.

15 PROTESTS AND REQUESTS FOR REDRESS

15.1 Protest forms are available at the Jury



Desk located outside the Jury Room adjacent to the STYC tennis courts. Protests and requests for redress or reopening shall be delivered there within the appropriate time limit.

15.2 For each class, the protest time limit is 60 minutes after the respective race committee finish boat has reached its mooring or the STYC dock

15.3 Notices will be posted no later than 30 minutes after the protest time limit to inform competitors of hearings in which they are parties or named as witnesses. Hearings will be held as soon as possible after each day's racing in approximate order of receipt.

15.4 Notices of protests by the race committee or jury will be posted to inform boats under rule 61.1(b).

15.5 Measurement protests shall be filed with the jury by the end of protest time on the first day of racing.

15.6 Arbitration:

- a) RSS Appendix T (Arbitration) will apply, except that the Post-Race Penalty will be a 40% scoring penalty. Changes RRS Appendix T1 (b).
- b) The arbitrator will not be a member of the jury that hears the protest if arbitration is unsuccessful, but will be permitted to observe the testimony given to the jury and offer testimony. This changes rule 63.3(a).

15.7 Breaches of instructions 6 and 11.3 will not be grounds for a protest by a boat. This changes rule 60.1(a).

15.8 Penalties for breaches of non-Part 2 rules may be less than disqualification if the jury so decides. This changes rule 64.1.

15.9 For the purposes of rule N1.4(b), the time limit for a hearing by the jury composed in compliance with rule N1.1, N1.2 and N1.3 is thirty (30) minutes after the decision is announced.

15.10 On the last scheduled day of racing,

a request for reopening a hearing shall be delivered:

- a) within the protest time limit if the requesting party was informed of the decision on the previous day;
- b) no later than 30 minutes after the requesting party was informed of the decision on that day. This changes rule 66.

15.11 On the last scheduled day of racing a request for redress based on a protest committee decision shall be delivered no later than 30 minutes after the decision was posted. This changes rule 62.2.

15.12 Decisions of the International Jury will be final as provided in rule 70.5.

16 SCORING

16.1 Two (2) races are required to be completed to constitute a series.

16.2 A boat's series score will be the total of all her race scores, without a discard. This changes rule A2.

17 SAFETY REGULATIONS

17.1 See NOR.

17.2 Check-in: Prior to the first warning signal each day, boats shall sail or motor by the stern of the RC Signal Boat and check-in by hailing their sail or bow number.

17.3 Retirement: A boat that retires from a race shall notify the race committee as soon as possible by the designated VHF channel, by reporting to a nearby race committee boat or by calling the St. Thomas Yacht Club at 340-775-6320.

18 CREW SUBSTITUTION

Requests for crew substitution shall be submitted in writing to the race committee for their approval. Any substitute crew shall submit a completed Disclaimer and Media Release form and the boat must comply with any eligibility requirements (e.g. weight limit or crew number limit).

19 EQUIPMENT AND MEASUREMENT CHECKS

A boat or equipment may be inspected at any time by the OA for compliance with the class rules, notice of race and sailing instructions. On the water, a boat can be instructed by a race committee equipment inspector or measurer to proceed immediately to a designated area for inspection.

20 RADIO COMMUNICATION

20.1 Day 1 – Friday: The race committee will use VHF channel 72 for all classes for Race 1 and the start of Race 2. The race committee will use VHF channel 71 for the IC24 class after the start of Race 2.

20.2 Days 2 & 3 – Saturday/Sunday: Classes sailing in the vicinity of Great Bay will use VHF channel 71. All other classes will use VHF channel 72.

20.3 Except in an emergency, a boat shall neither make radio transmissions while racing, nor receive radio communications not available to other boats. This restriction also applies to mobile telephones.

21 PRIZES

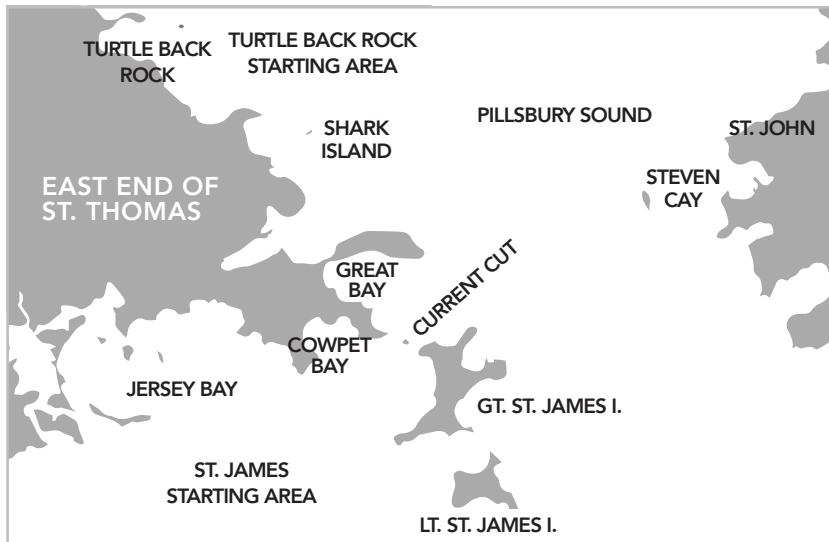
21.1 Prizes will be awarded for first, second and third places in each class.

21.2 All prizes will be presented at the awards ceremony at the St. Thomas Yacht Club commencing at 1800 hours on Sunday, March 26, 2017.

22 DISCLAIMER OF LIABILITY

Competitors participate in the regatta entirely at their own risk. See rule 4, Decision to Race. The Organizing Authority will not accept any liability for material damage or personal injury or death sustained in conjunction with or prior to, during, or after the regatta.

APPENDIX A



► WINDWARD/LEEWARD (W/L) COURSE DIAGRAMS

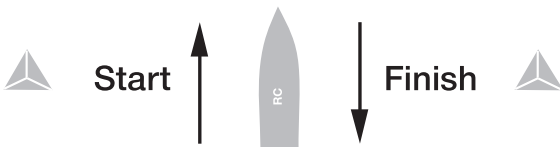
- Course 2: Start, mark 1, offset, Finish
- Course 2A: Start, mark 1A, Finish
- Course 4: Start, mark 1, offset, Gate, mark 1, offset, Finish
- Course 4A: Start, mark 1A, Gate, mark 1A, Finish
- Course 6: Start, mark 1, offset, Gate, mark 1, offset, Gate, mark 1, offset, Finish
- Course 6A: Start, mark 1A, Gate, mark 1A, Gate, mark 1A, Finish

► The RANGE BEARING, and MARK DESIGNATION to the appropriate weather mark will be displayed from the Race Committee Signal Boat and/or announced on VHF.

● Mark 1A

Offset ● ● Mark 1

Gate ● ●

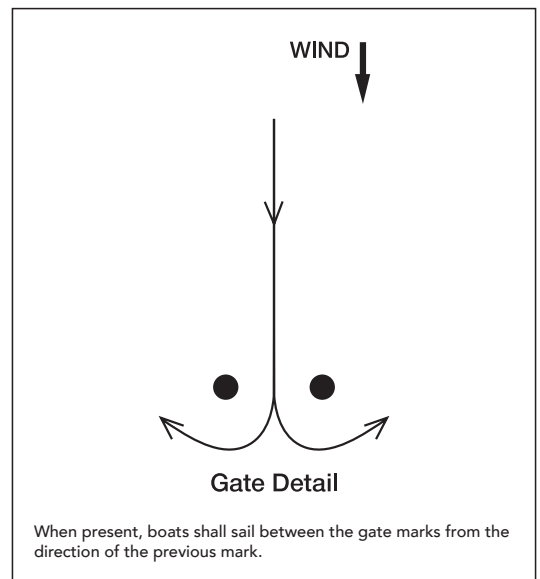


► SOUND-SIGNAL STARTING SYSTEM

1. Course and postponement signals may be made orally.
2. Audible signals shall govern, even when supplemental visual signals are also used.
3. The starting sequence shall consist of the following sound signals made at the indicated times:

Signal	Sound	Time before start
Warning	3 long	3 minutes
Preparatory	2 long	2 minutes
	1 long, 3 short	1 minute, 30 seconds
	1 long	1 minute
	3 short	30 seconds
	2 short	20 seconds
	1 short	10 seconds
	1 short	5 seconds
	1 short	4 seconds
	1 short	3 seconds
	1 short	2 seconds
	1 short	1 second
Starting	1 long	0

4. Signals shall be timed from their commencement.
5. A series of short signals may be made before the sequence begins in order to attract attention.
6. Individual recalls shall be signalled by the hail of the sail number (or some other clearly distinguishing feature) of each recalled boat. Flag X need not be displayed.
7. Failure of a competitor to hear an adequate course, postponement, starting sequence or recall signal shall not be grounds for redress.



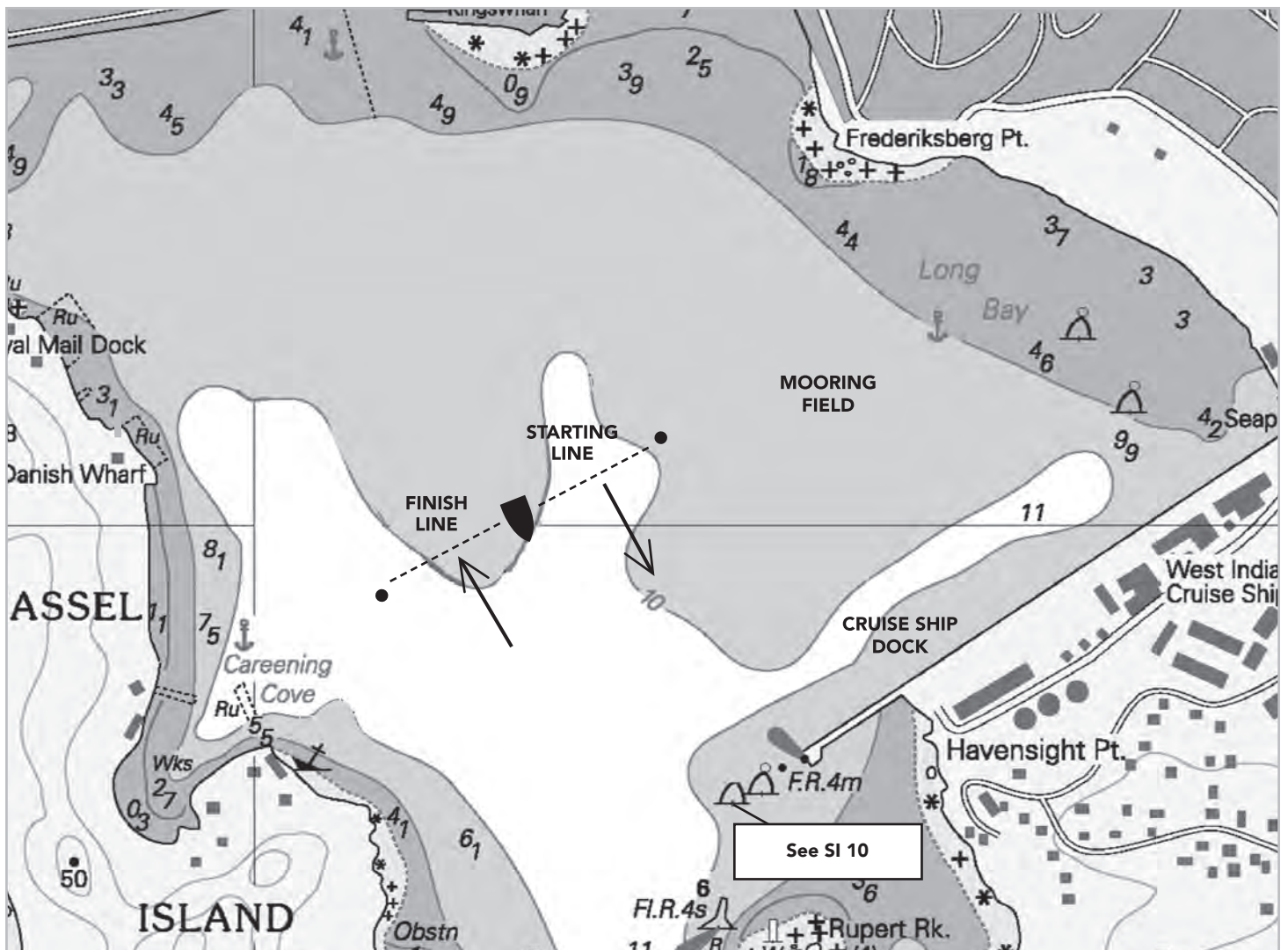
COURSE MARKS

(All mark positions and distances are approximate)

MARK NAME	LATITUDE	LONGITUDE	MARK NAME	POSITION
Coculus Mark	18° 17.72' N	64° 54.43' W	Weather Mark	For course EH-1 will be approx. 3.0nm to windward of Coculus Mark
Stragglers Mark	18° 18.10' N	64° 50.40' W	Leeward Mark	For course SJ-2 will be approx. 0.3nm to windward of the Start/Finish Line
Yeoman Mark	18° 18.15' N	64° 49.2' W	Reef Bay North Mark (RBN)	18° 19.10' N 64° 45.0' W
Dog Rock Mark	18° 17.63' N	64° 48.6' W	Reef Bay South Mark (RBS)	18° 17.80' N 64° 45.0' W
Shark Is. Mark	18° 20.75' N	64° 50.2' W	Little St. James (LSJ)	Eastern end of St. James Cut
Turtle Rock Mark	18° 21.15' N	64° 51.21' W		
Maria Bluff Mark	18° 18.71' N	64° 47.73' W		
Flamingo Mark	Flamingo Mark should be set approx. 1.5 nm to leeward of WR1 - position to be posted and announced on VHF prior to warning signal			

NOTE: In all course diagrams, "Mark" indicates an inflatable mark; Mark names do not appear on the inflatable. "Buoy" refers to a government buoy. Consult a navigational chart for their latitude/longitude.

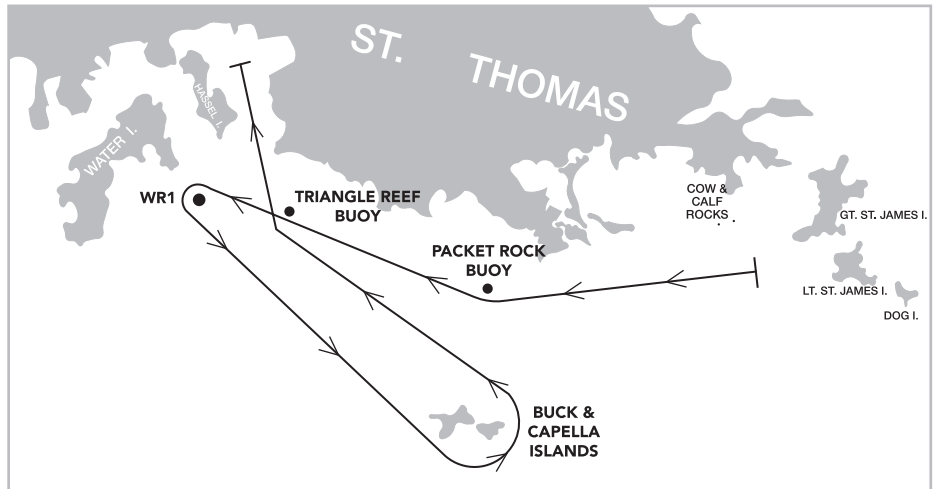
► **CHARLOTTE AMALIE HARBOR DETAIL** - Locations are approximate and are subject to adjustments as required for weather, obstructions, etc.



SH-1 SOUTH HARBOR COURSE 1

(16 NM)

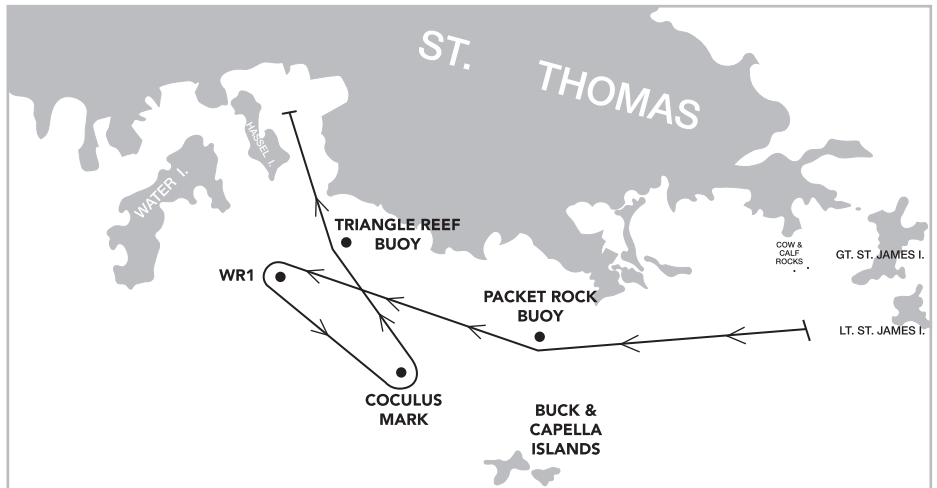
- St. James Starting Area
- Packet Rock Buoy to starboard
- Triangle Reef Buoy to Starboard
- WR1 Buoy to Port
- Buck & Capella Islands to Port
- Triangle Reef Buoy to Starboard
- Finish in Charlotte Amalie Harbor



SH-2 SOUTH HARBOR COURSE 2

(11 NM)

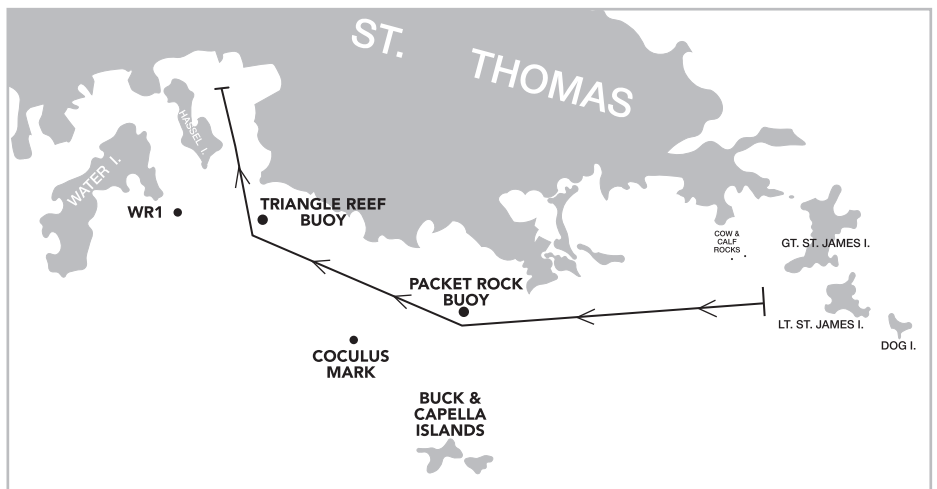
- St. James Starting Area
- Packet Rock Buoy to Starboard
- Triangle Reef Buoy to Starboard
- WR1 Buoy leaving it to Port
- Coculus Mark to Port
- Triangle Reef Buoy to Starboard
- Finish in Charlotte Amalie Harbor



SH-3 SOUTH HARBOR COURSE 3

(6 NM)

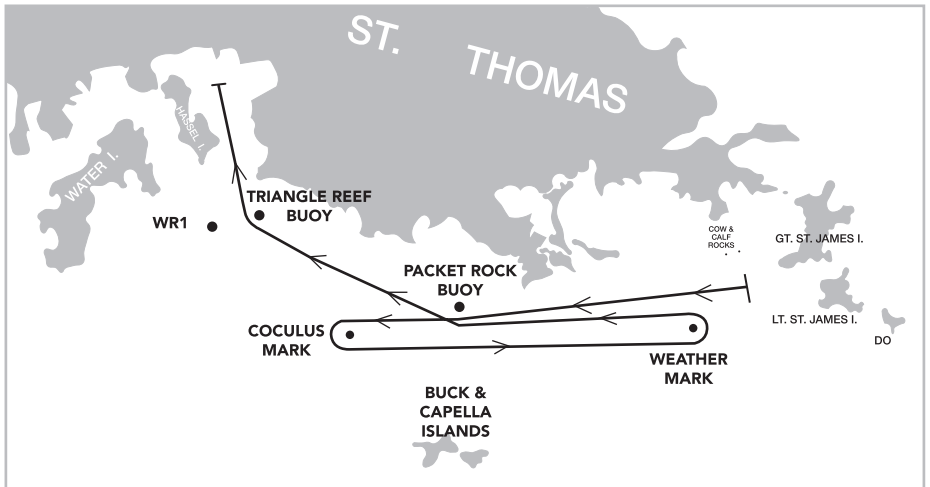
- St. James Starting Area
- Packet Rock Buoy to Starboard
- Triangle Reef Buoy to Starboard
- Finish in Charlotte Amalie Harbor



EH-1 EAST HARBOR COURSE 1

(14 NM)

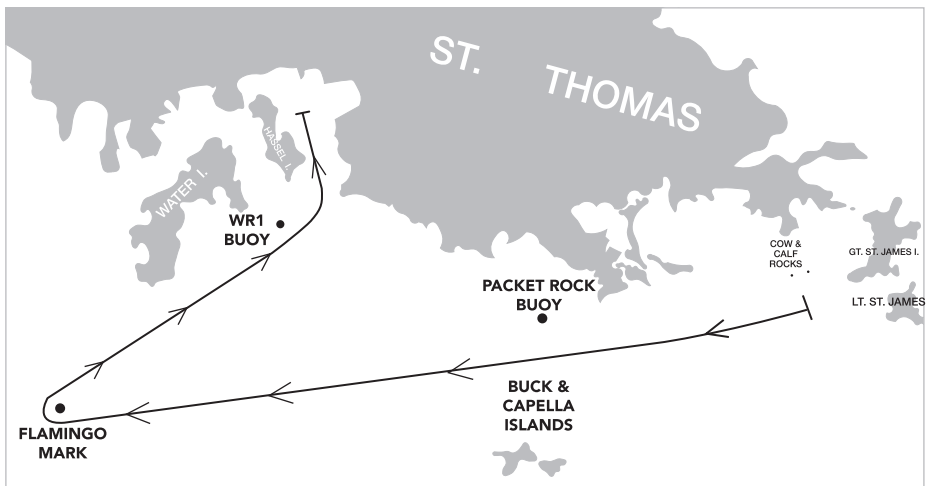
- St. James Starting Area
- Packet Rock Buoy to starboard
- Coculus Mark to Port
- Weather Mark to Port
- Packet Rock Buoy to Starboard
- Triangle Reef Buoy to Starboard
- Finish in Charlotte Amalie Harbor



NH-1 NORTH HARBOR COURSE 1

(13 NM)

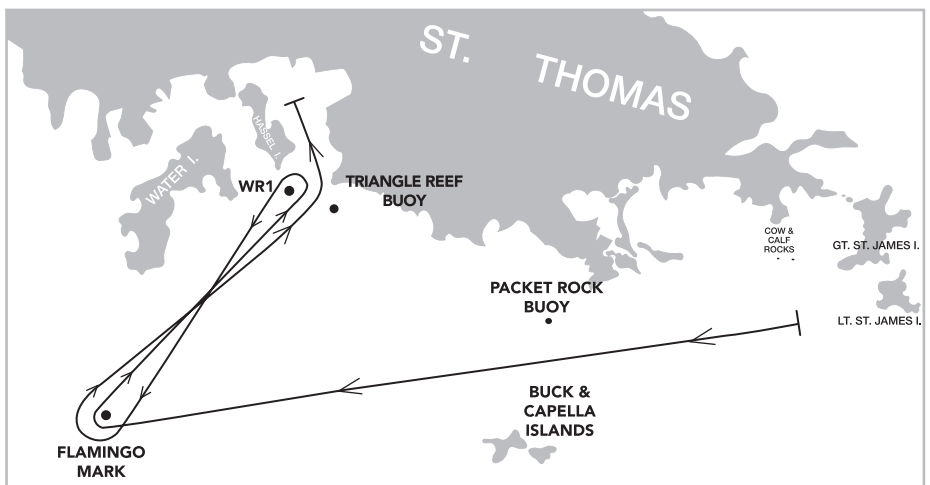
- St. James Starting Area
- Packet Rock Buoy to Starboard
- Flamingo Mark to Starboard
- Leaving WR1 buoy to Port,
- Finish in Charlotte Amalie Harbor



NH-2 NORTH HARBOR COURSE 2

(16 NM)

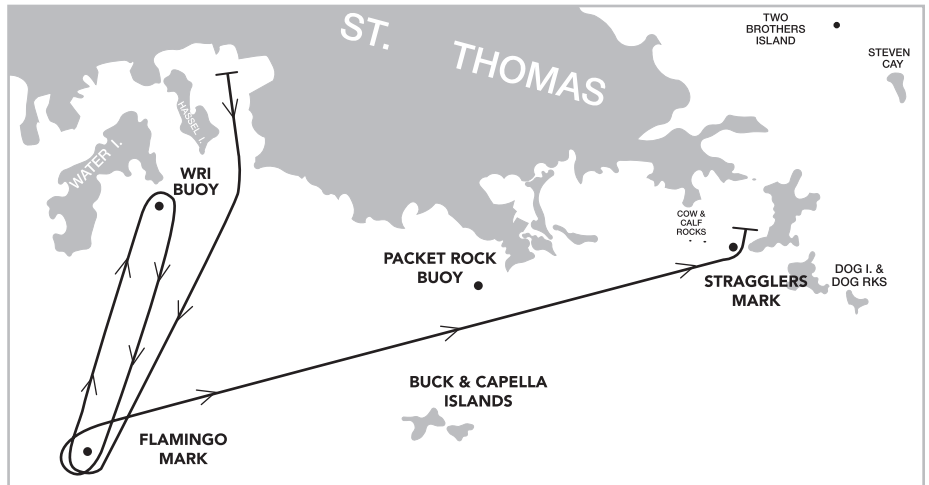
- St. James Starting Area
- Packet Rock Buoy to Starboard
- Flamingo Mark to Starboard
- WR1 Buoy to Port
- Flamingo Mark to Starboard
- WR1 Buoy to Port
- Finish in Charlotte Amalie Harbor



NC-1 NORTH COWPET COURSE 1

(16 NM)

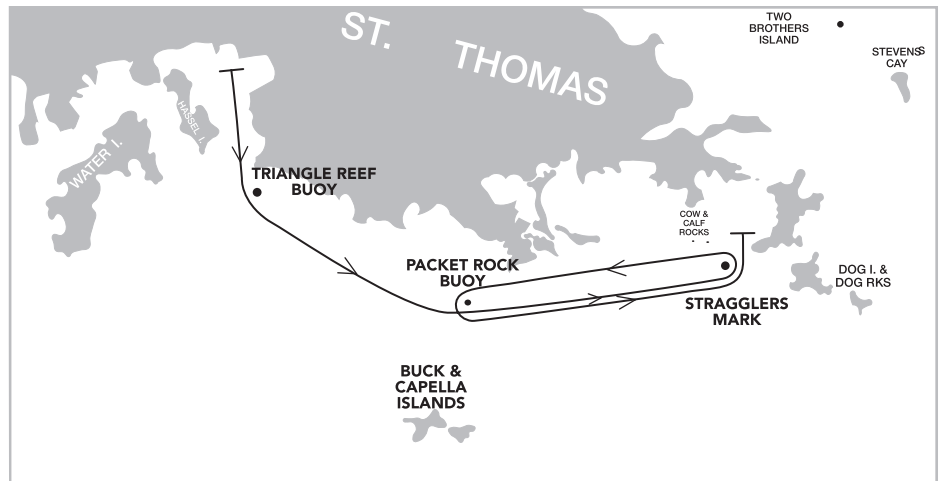
- Charlotte Amalie Harbor Starting Area
- Flamingo Mark to Starboard
- WR1 to Starboard
- Flamingo Mark to Starboard
- Stragglers Mark to Port,
- Finish



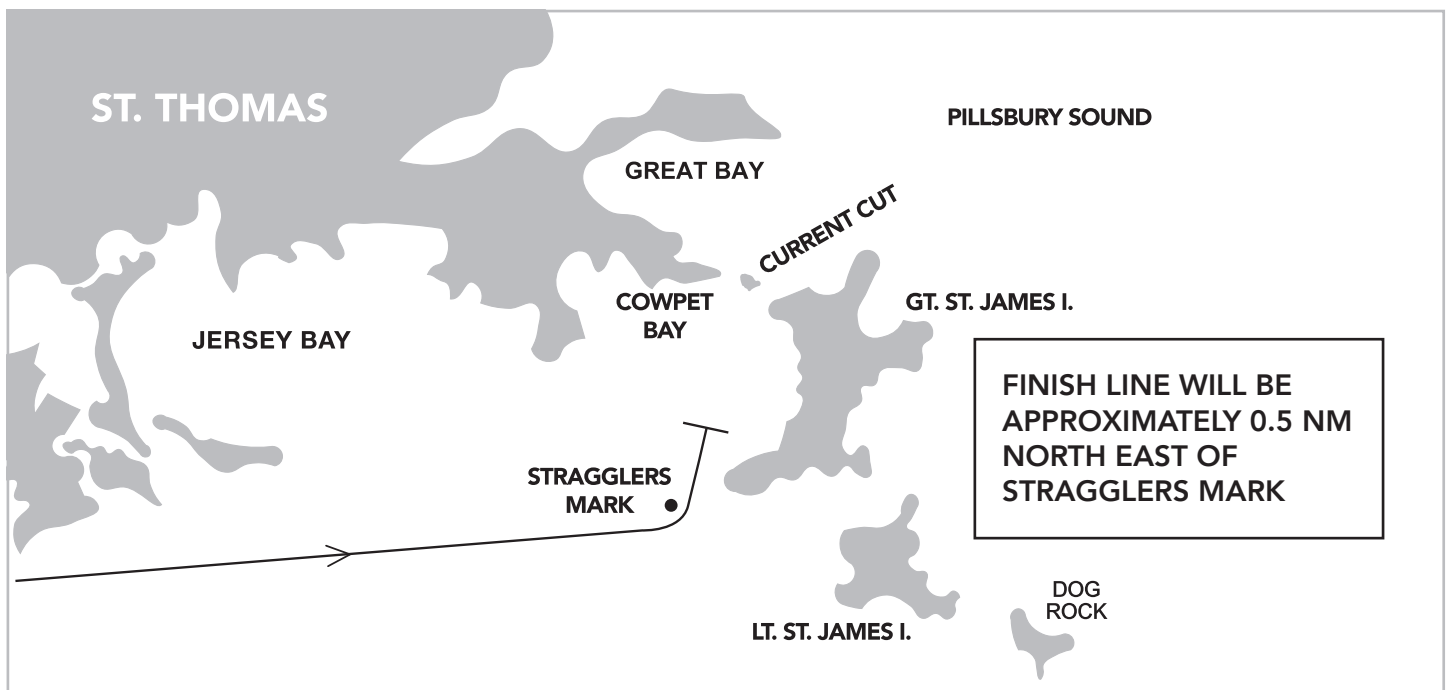
EC-1 EAST COWPET COURSE 1

(13 NM)

- Charlotte Amalie Harbor Starting Area
- Triangle Reef Buoy to Port
- Packet Rock Buoy to Port
- Stragglers Mark to Port
- Packet Rock Buoy to Port
- Stragglers Mark to Port
- Finish



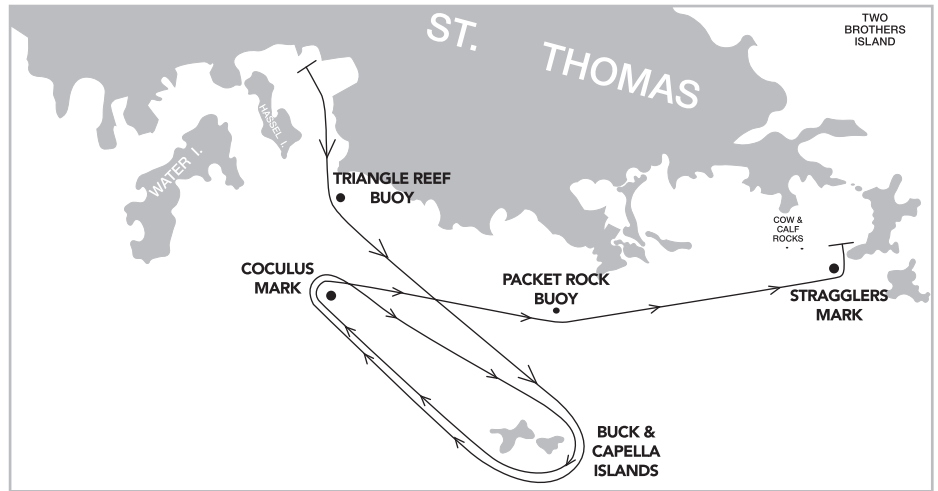
FINISH DETAIL FOR BUCK ISLAND, COWPET AND PR-3



SC-1 SOUTH COWPET COURSE 1

(18 NM)

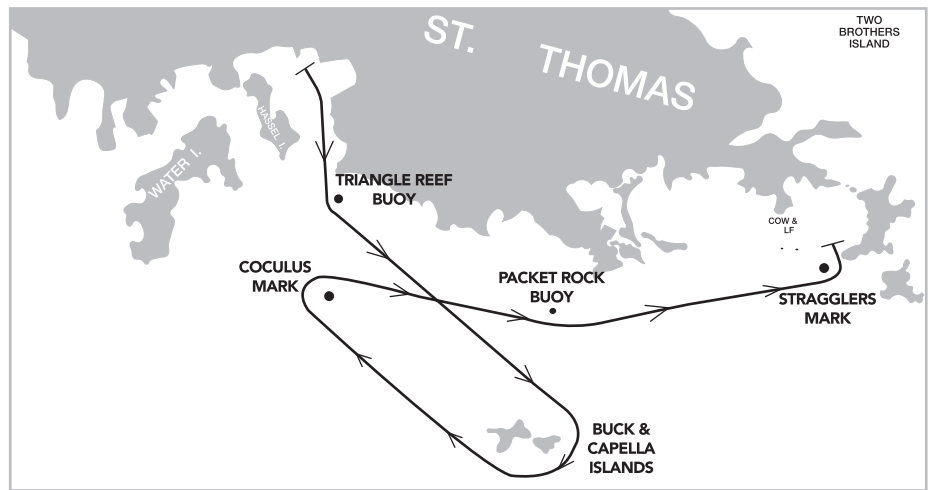
- Charlotte Amalie Harbor Starting Area
- Triangle Reef Buoy to Port
- Buck & Capella Islands to Starboard
- Coculus Mark to Starboard
- Buck & Capella Islands to Starboard
- Coculus Mark to Starboard
- Packet Rock Buoy to Port
- Stragglers Mark to Port
- Finish



SC-2 SOUTH COWPET COURSE 2

(15 NM)

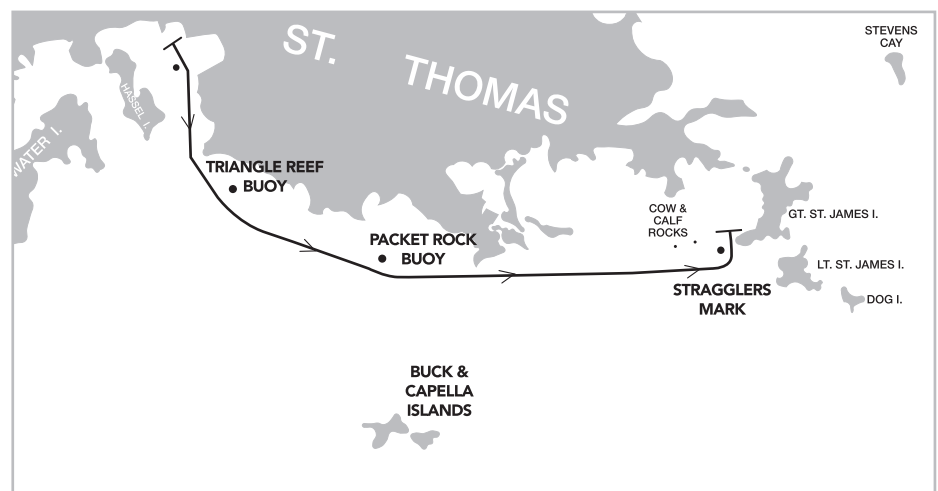
- Charlotte Amalie Harbor Starting Area
- Triangle Reef Buoy to Port
- Buck & Capella Islands to Starboard
- Coculus Mark to Starboard
- Packet Rock Buoy to Port
- Stragglers Mark to Port
- Finish



SC-3 SOUTH COWPET COURSE 3

(6 NM)

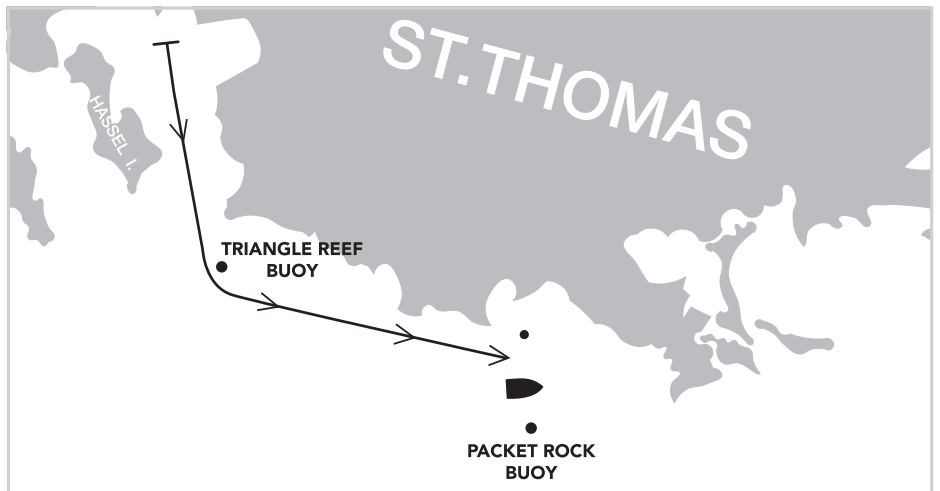
- Charlotte Amalie Harbor Starting area
- Triangle Reef Buoy to Port
- Packet Rock Buoy to Port
- Stragglers Mark to Port
- Finish



PR-1 PACKET ROCK COURSE 1

(3 NM)

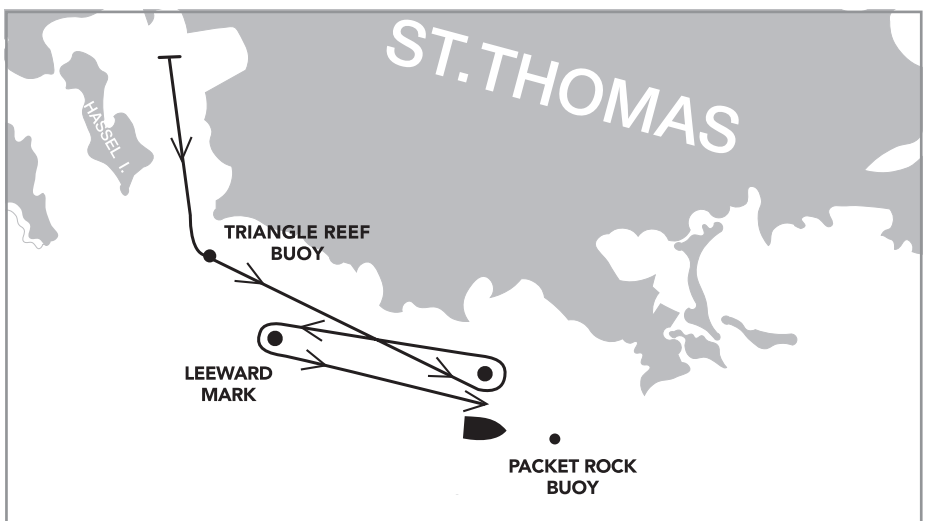
- Charlotte Amalie Harbor Starting Area
- Triangle Reef Buoy to Port
- Finish at signal boat located to the north-west of Packet Rock Buoy RN"2"
- Finish between staff displaying a Blue Flag on the Signal Boat and nearby inflatable mark.



PR-2 PACKET ROCK COURSE 2

(4.5 NM)

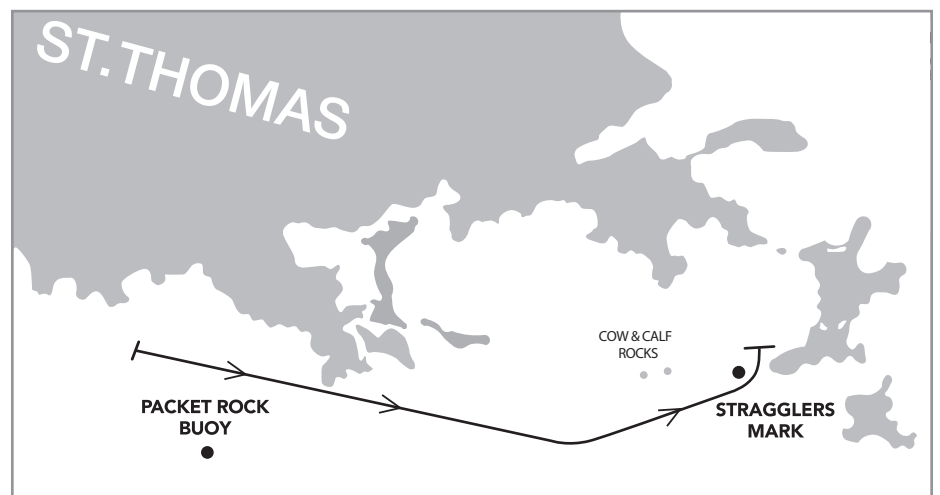
- Charlotte Amalie Harbor Starting area
- Triangle Reef Buoy to Port
- Weather Mark (which is the Finish Line Pin) to Port
- Leeward Mark, approx. 0.5nm to leeward of Weather Mark, to Port
- Finish at signal boat located to the north-west of Packet Rock Buoy RN"2"
- Finish between staff displaying a Blue Flag on the Signal Boat and nearby inflatable mark.



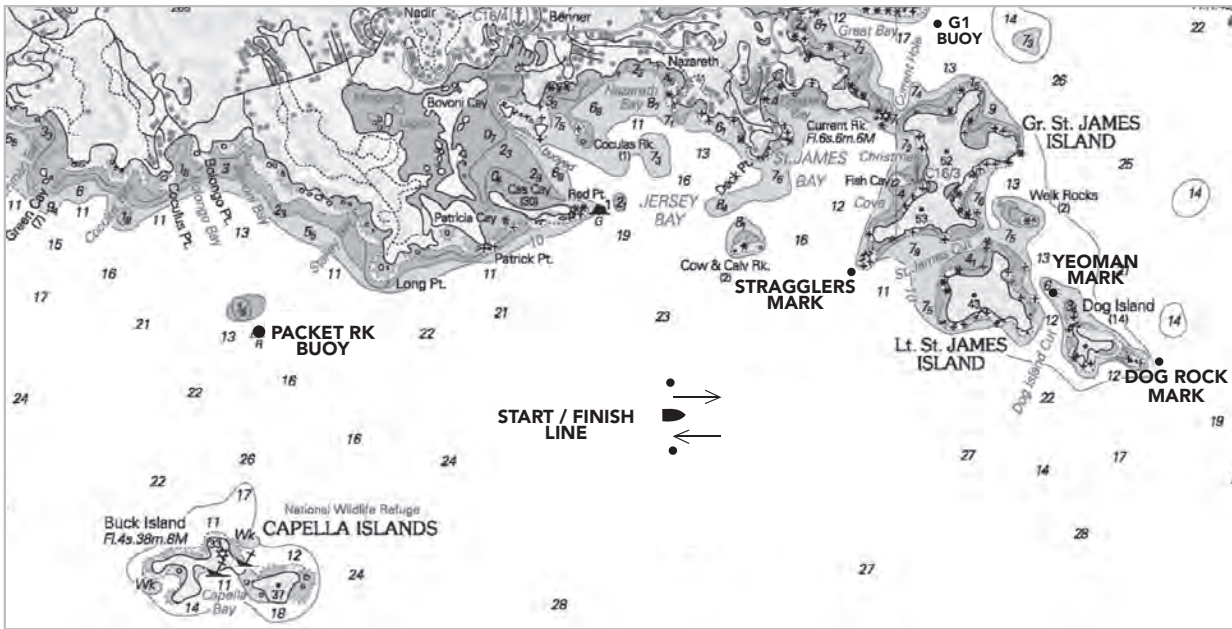
PR-3 PACKET ROCK COURSE 3

(3.5 NM)

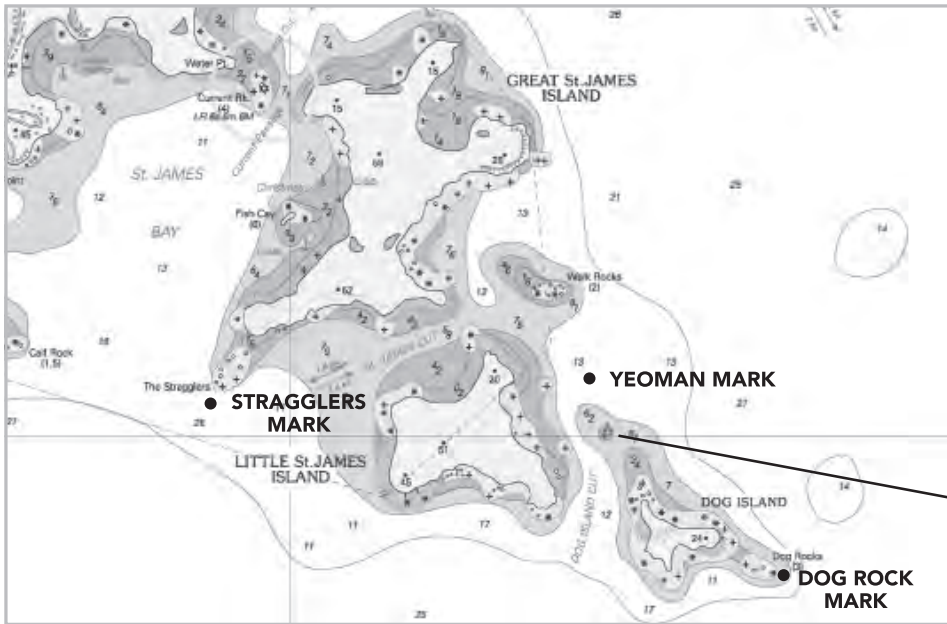
- Packet Rock Start Area
Start between staff displaying an Orange Flag on the Signal Boat and a nearby inflatable mark
- Cow and Calf rocks to Port
- Stragglers Mark to Port
- Finish



▶ **DOG ISLAND DETAIL A**



▶ **DOG ISLAND DETAIL B**

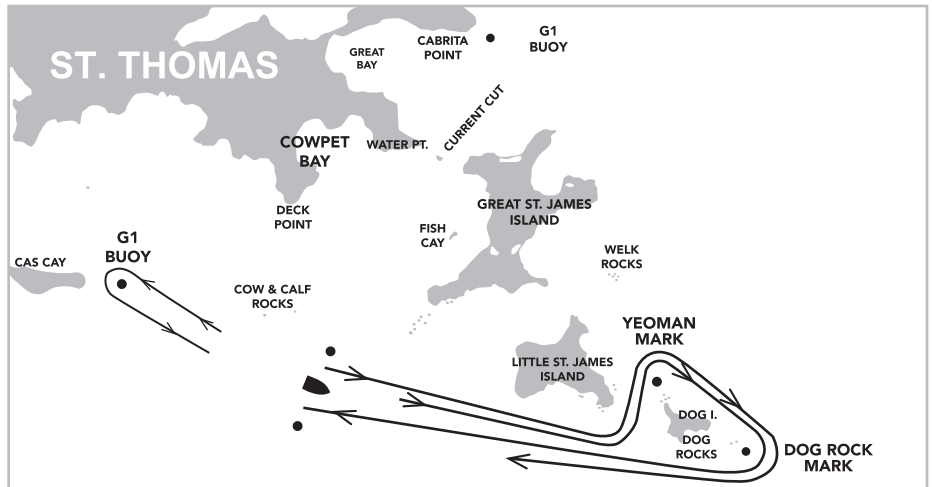


NOTE: Submerged rock may be identified by a set of small floats. These floats shall not be relied upon for navigation.

D-1 DOG ISLAND COURSE 1

(10 NM)

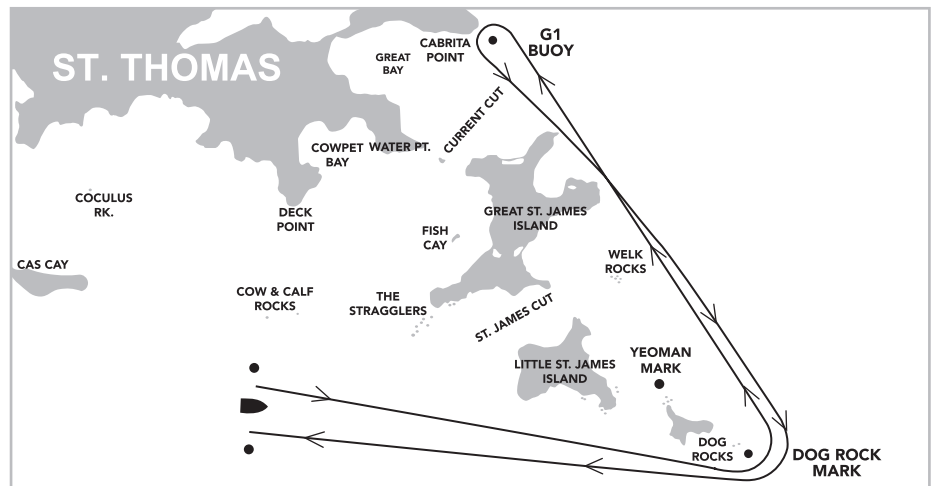
- St. James Starting Area
- Dog Island Cut
- Yeoman Mark to Starboard
- Dog Rock Mark to Starboard
- G1 Buoy to Port
- Dog Island Cut
- Yeoman Mark to Starboard
- Dog Rock Mark to Starboard
- Finish



D-2 DOG ISLAND COURSE 2

(8 NM)

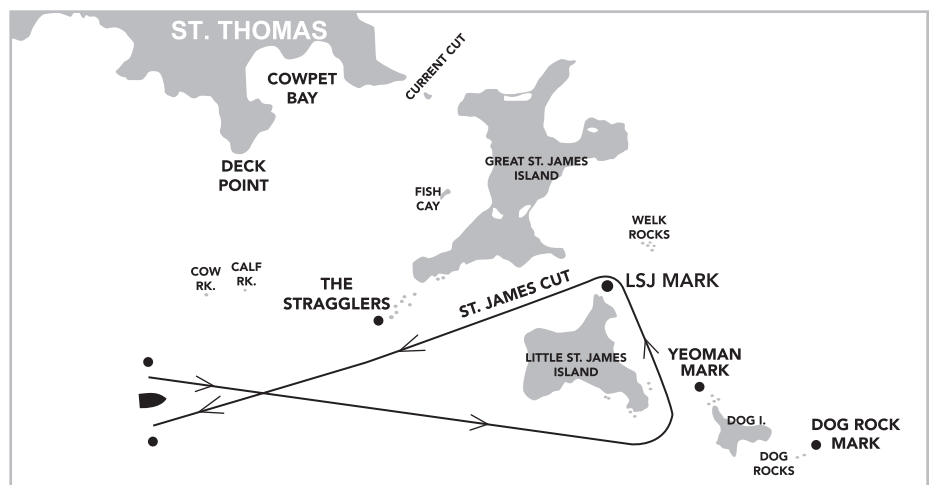
- St. James Starting Area
- Dog Rock Mark to Port
- G1 Buoy to Port
- Dog Rock Mark to Starboard
- Finish



SJ-1 ST. JAMES COURSE 1

(4.5 NM)

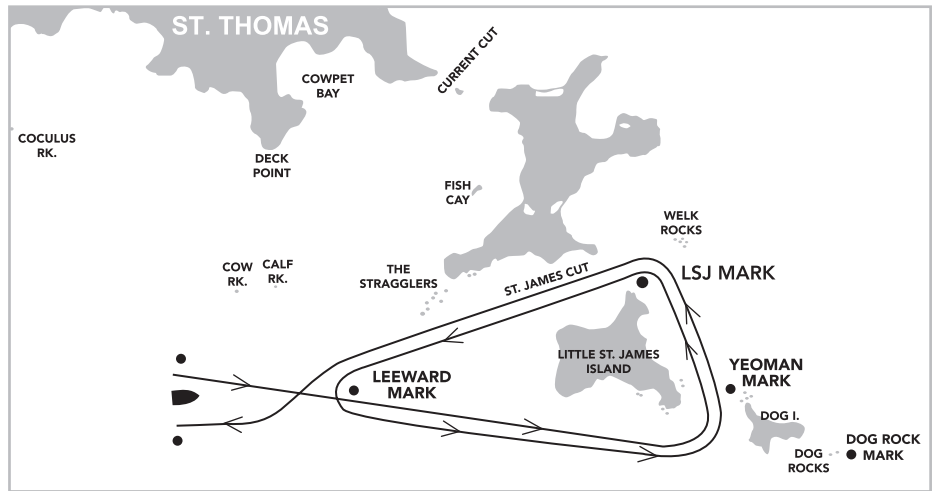
- St. James Starting Area
- Dog Island Cut
- Yeoman Mark to Starboard
- LSJ Mark to Port
- St. James Cut
- Finish



SJ-2 ST. JAMES COURSE 2

(7 NM)

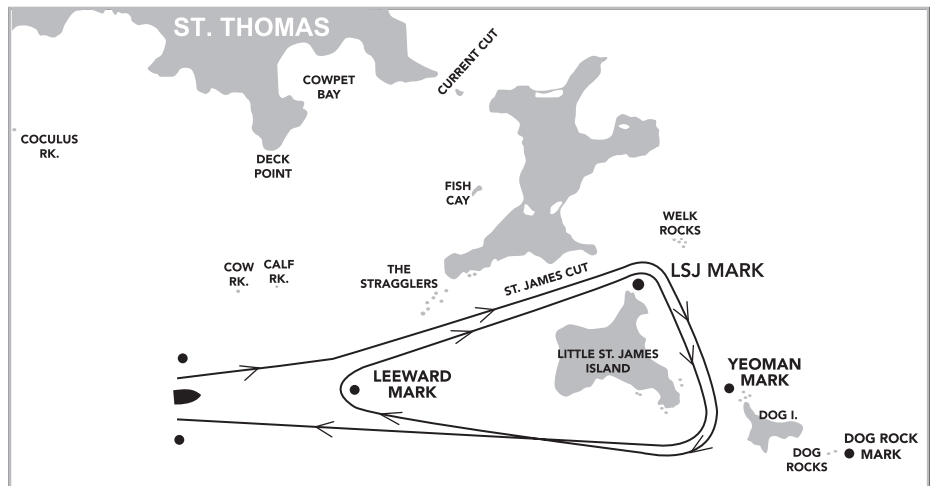
- St. James Starting Area
- Dog Island Cut
- Yeoman Mark to Starboard
- LSJ Mark to Port
- St. James Cut
- Leeward Mark to Port
- Dog Island Cut
- Yeoman Mark to Starboard
- LSJ Mark to Port
- St. James Cut
- Finish



SJ-3 ST. JAMES COURSE 3

(7 NM)

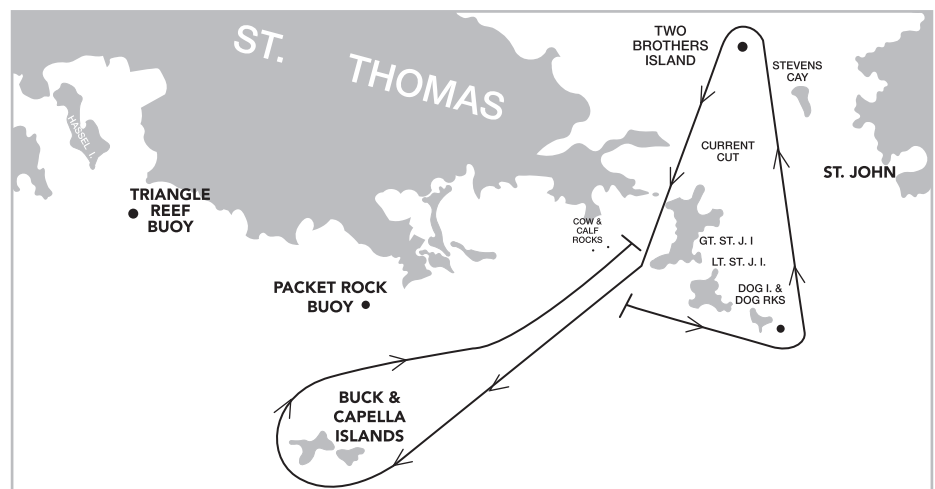
- St. James Starting Area
- St. James Cut
- LSJ Mark to Starboard
- Yeoman Mark to Port
- Dog Island Cut
- Leeward Mark to Starboard
- St. James Cut
- LSJ Mark to Starboard
- Yeoman Mark to Port
- Dog Island Cut
- Finish



BI-1 BUCK ISLAND COURSE 1

(18.5NM)

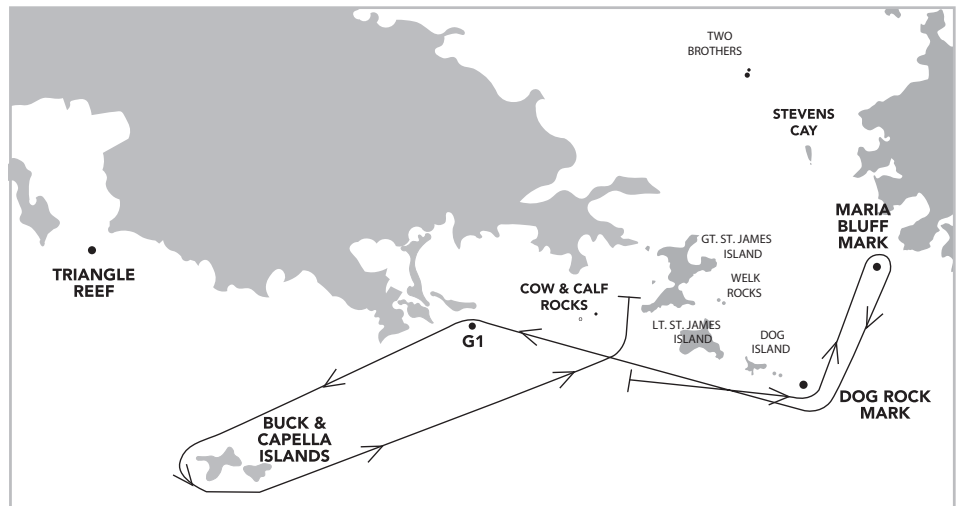
- St. James Starting Area
- Dog Rock Mark to Port
- Two Brothers Island to Port
- Current Cut Rock to Starboard
- Buck & Capella Islands to Starboard
- Packet Rock Buoy to Port
- Cow and Calf Rocks to Port
- Finish approximately 0.2 nm North West of Stragglers Rocks



BI-2 BUCK ISLAND COURSE 2

(16 NM)

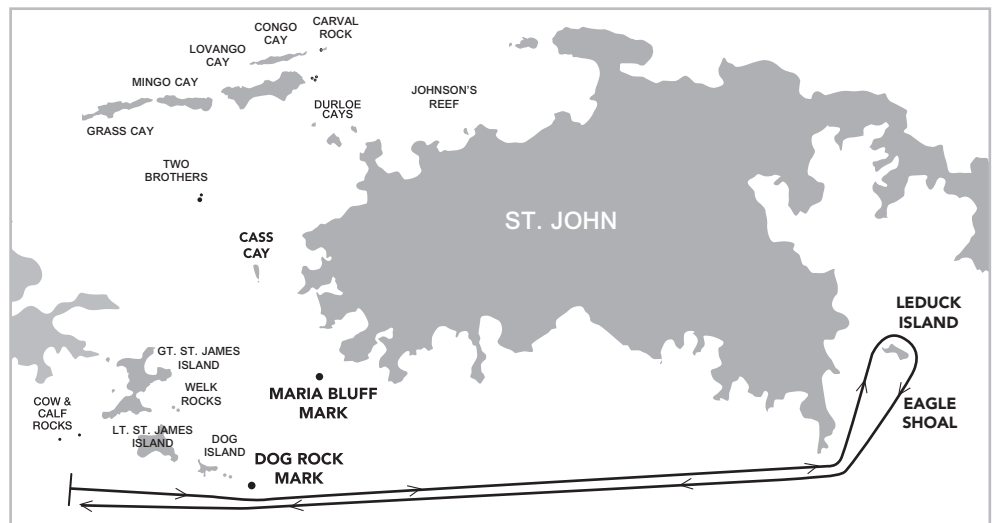
- St. James Starting Area
- Dog Rock Mark to Port
- Maria Bluff Mark to Starboard
- Dog Rock Mark to Starboard
- G1 Buoy to Port
- Buck & Capella Island to Port
- Cow and Calf Rocks to Port
- Finish Approximately 0.2 nm North West of Stragglers Rocks



LI-1 LEDUCK ISLAND RACE 1

(20 NM)

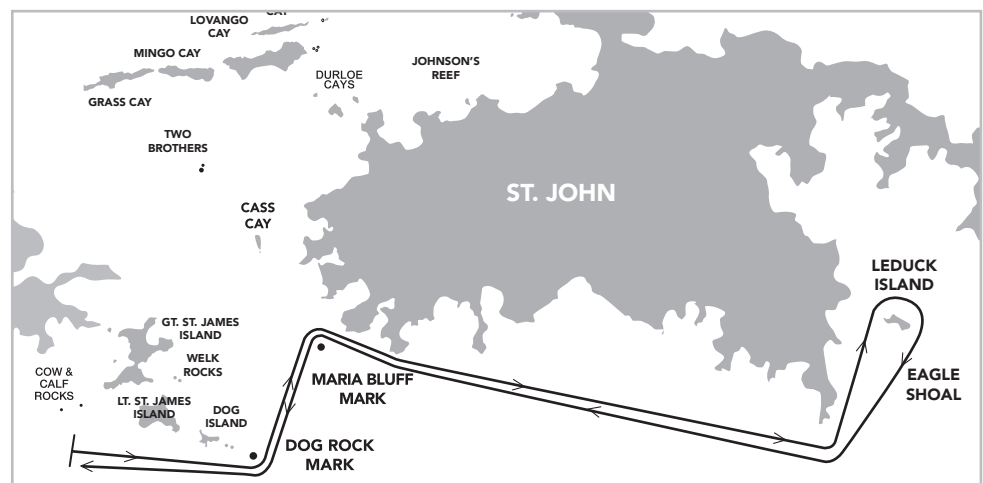
- St. James Starting Area
- Dog Rock Mark to Port
- Leduck Island to Starboard
- Dog Rock Mark to Starboard
- Finish



LI-2 LEDUCK ISLAND RACE 2

(22 NM)

- St. James Starting Area
- Dog Rock Mark to Port
- Maria Bluff Mark to Starboard
- Leduck Island to Starboard
- Maria Bluff Mark to Port
- Dog Rock Mark to Starboard
- Finish



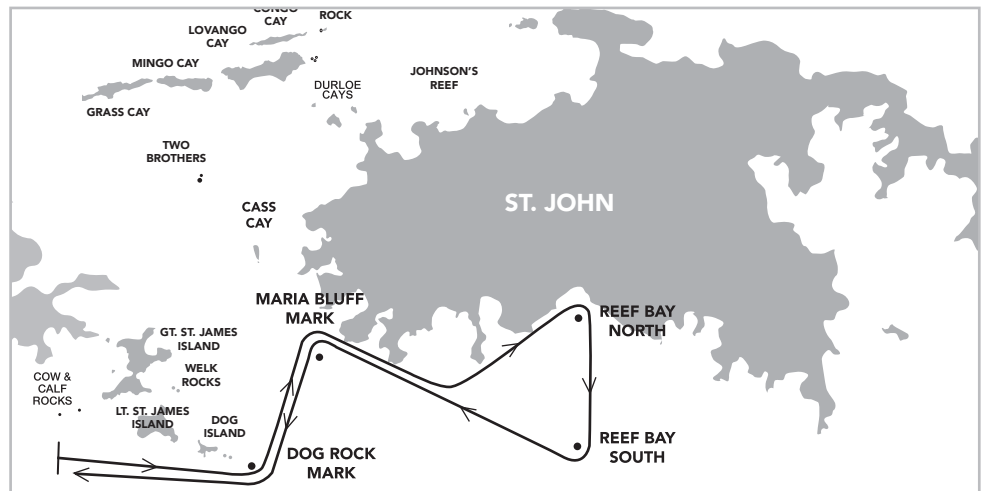
FINISH DETAIL FOR NORTH PASSAGE AND PILLSBURY SOUND COURSES



RB-1 REEF BAY RACE 1

(14 NM)

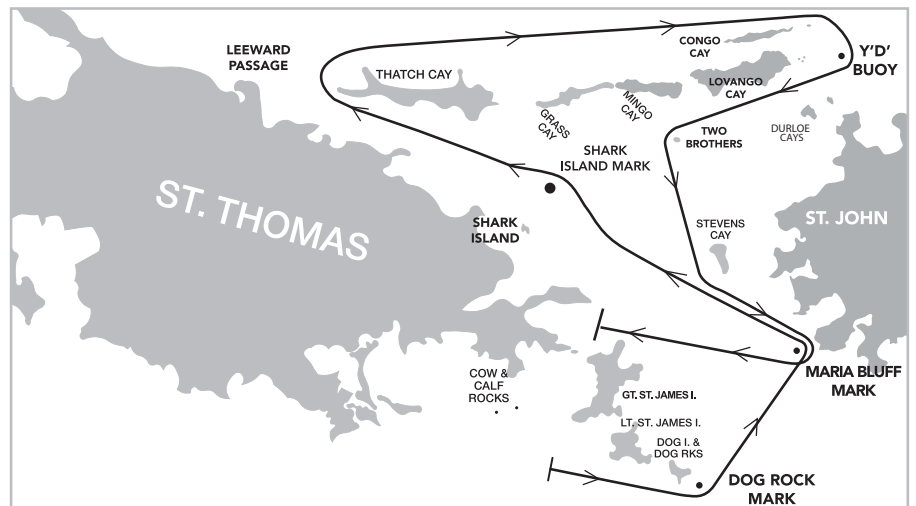
- St. James Starting Area
- Dog Rock Mark to Port
- Maria Bluff Mark to Starboard
- Reef Bay North Mark to Starboard
- Reef Bay South Mark to Starboard
- Maria Bluff Mark to Port
- Dog Rock Mark to Starboard
- Finish



NP-1 NORTH PASSAGE COURSE

(25NM)

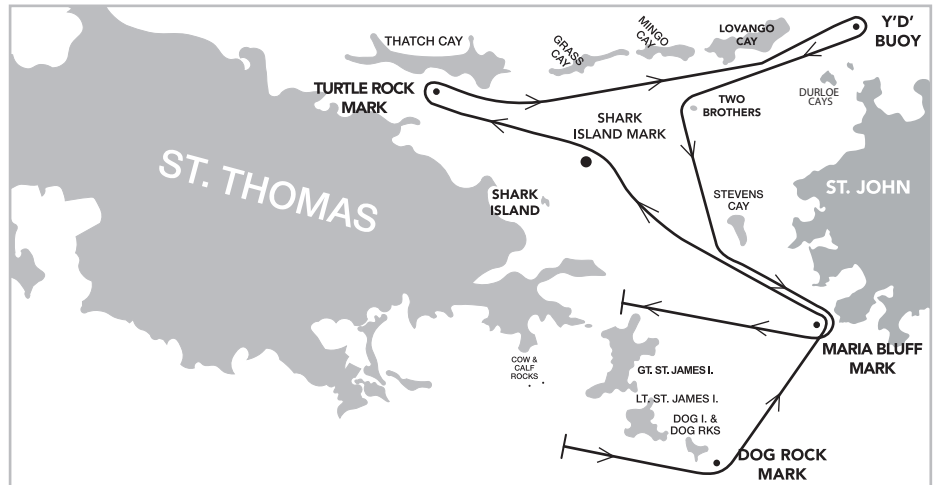
- St. James Starting Area
- Dock Rock Mark to Port
- Maria Bluff Mark to Port
- Shark Island Mark to Port
- Leaving Thatch Cay, Grass Gay, Mingo Cay, Lavango Cay, Congo Cay and Carval Rock to Starboard,
- Y'D' Buoy (0.3nm north of "1JR") to Starboard
- Durloe Cays to Port
- Two Brothers to Port
- Steven's Cay to Port
- Maria Bluff Mark to Starboard
- Finish



NP-2 NORTH PILLSBURY COURSE 2

(18NM)

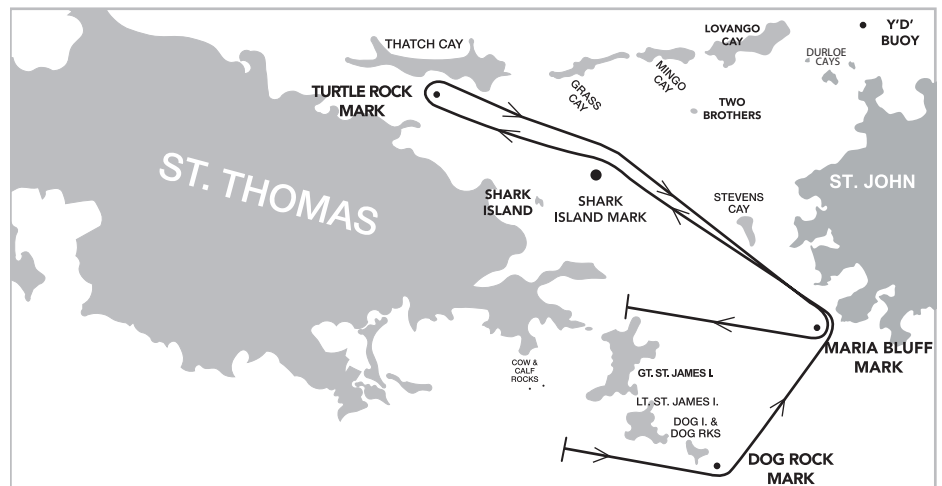
- St. James Starting Area
- Dog Rock Mark to Port
- Maria Bluff Mark to Port
- Shark Island Mark to Port
- Turtle Rock Mark to Starboard
- Durloe Cays to Starboard
- Buoy Y"D"(0.3nm North of Buoy "1JR") to Starboard
- Durole Cays to Port
- Two Brothers to Port
- Steven's Cay to Port
- Maria Bluff Mark to Starboard
- Finish



SP-1 SOUTH PILLSBURY COURSE

(14NM)

- St. James Starting Area
- Dog Rock Mark to Port
- Maria Bluff Mark to Port
- Shark Island Mark to Port
- Turtle Rock Mark to Starboard
- Shark Island Mark to Starboard
- Steven's Cay to Port
- Maria Bluff Mark to Starboard
- Finish



SP-3 SOUTH PILLSBURY COURSE

(11NM)

- St. James Starting Area
- Dog Rock Mark to Port
- Shark Island Mark to Starboard
- Steven's Cay to Port
- Maria Bluff Mark to Starboard
- Finish

