



INTERNATIONAL ROLEX REGATTA 2010



SAILING INSTRUCTIONS AND APPENDIX A

St. Thomas, U.S. Virgin Islands

March 26 - 28, 2010



► **SAILING INSTRUCTIONS**

► **1 - RULES**

1.1 - The regatta will be governed by the rules, as defined in The Racing Rules of Sailing (RRS) 2009 - 2012.

1.2 - ISAF Offshore Special Regulations Appendix J, Category 5 Special Regulation for Inshore Races shall apply.

1.3 - The Caribbean Sailing Association (CSA) rating Rule. Crew limitations for CSA classes will be in accordance with the CSA Rating Rule. CSA Rating information can be found at www.caribbean-sailing.com.

1.4 - The 2010 IRC Rule Parts A, B & C. Rule 21.1.5 (d) will not apply. Crew limitations for IRC Classes will be the number of crew listed on the IRC Certificate, plus one. IRC Rating information can be found at www.rorcrating.com.

1.5 - Multihull Advisory Committee for multihull classes.

1.6 - Portsmouth Yardstick for Beach Cats.

1.7 - For all classes, except Beach Cats, the minimum number of crew shall be three.

1.8 - Minimum safety requirements are found in Appendix A of the Notice of Race.

1.9 - Every crew member is required to sign and every boat shall file, the Disclaimer and Waiver of Media Rights form provided at registration.

► **2 - BOAT IDENTIFICATION**

2.1 - The organizing authority will assign bow numbers to designated classes. The numbers will be available at registration. These numbers shall be affixed to both the port and starboard sides in the following manner: the leading edge of the forward number shall be 20 inches aft of the stern and 3 inches below the deck. The leading edge of the aft number shall be 3 inches aft of the aft edge of the forward number and 3 inches below the deck. All bow numbers shall be on a contrast-

ing background.

2.2 - Event stickers and "Rolex" flags will also be supplied and shall be displayed during the Regatta. The "Rolex" flags shall be prominently displayed from the backstay or near the stern of the boat approximately 7 feet above the deck at all times while racing. Beach Cats and cruising class boats are not required to carry "Rolex" stickers. The "Rolex" stickers shall be approximately 10 inches aft of the bow numbers and 6 inches below the deck. Boats failing to display event stickers, "Rolex" flags or bow numbers are subject to protest by the Race Committee only. This changes RRS 60.1.

► **3 - NOTICES TO COMPETITORS**

Notices to the competitors will be posted on the Official Notice Board located at St. Thomas Yacht Club, Cowpet Bay.

► **4 - CHANGES TO SAILING INSTRUCTIONS**

4.1 - Any change to the Sailing Instructions will be posted before 0800 on the Official Notice Board on the day it will take effect, except that any change to the schedule of races will be posted by 1800 on the day before it will take effect.

4.2 - Oral instructions may be given on the water. In the event of oral instructions the Signal Boat will display code flag Lima and give instructions as boats come within hail of the Signal Boat, in addition the Race Committee will broadcast the instructions and intentions of the Race Committee on the designated VHF channel.

► **5 - SIGNALS MADE ASHORE**

5.1 - Signals made ashore will be displayed on the flagpole at St. Thomas Yacht Club.

5.2 - When flag AP is displayed ashore, no warning signal will be made less than 60 minutes after the AP is lowered. This changes Race Signals.

► **6 - SCHEDULE OF RACES**

6.1 - Races are scheduled on March 26, 27 & 28, 2010.

6.2 - Classes sailing in each of the race areas will be posted on the Official Notice Board(s) by 1800hr Thursday March 25, 2010.

6.3 - The scheduled time for the first warning signal for each race day is 1000hr.

6.4 - Courses to be sailed each day will be posted on the Signal Boat for their respective class.

6.5 - **Day 1, Friday March 26** – All classes, except IC24s are scheduled to sail 2 races. Race 1 for all boats except IC24s will start in Charlotte Amalie Harbor and finish in Cowpet Bay. IC24s will sail as many as 3 additional races starting and finishing in Charlotte Amalie Harbor.

6.6 - **Day 2, Saturday March 27** – For IC24's only, as many as 8 W/L races are planned in the vicinity of Great Bay, Jersey Bay or St. James Circle.

Cruising Class(es) & Multihulls will sail one of the Buck Island Courses.

All other classes will sail a combination of St. James, Dog Island and/or distance race courses on the south side of St. John.

6.7 - **Day 3, Sunday March 28** – Races for all classes except IC24s will start from the Cow & Calf Starting area. Two races are planned for non-IC24 classes, these classes will sail a combination of St. James, Dog Is. and Pillsbury Sound courses. For IC24's, as many as 6 W/L races are planned in Jersey Bay.

► **7 - CLASS FLAGS**

7.1 - Class flags shall be designated and will be distributed by the Race Committee during the skipper's meeting Thursday, March 25.

7.2 - Class flags shall be conspicuously displayed from the backstay, or near the stern of the boat, at all times while racing.

► **8 - THE COURSES**

8.1 - Course descriptions are included in Appendix A of these sailing instructions.

8.2 - Course graphics are not a substitute for navigational aids, all distances and mark locations are approximate. Competitors assume responsibility for identifying and avoiding navigational hazards.

8.3 - Course designations will be displayed or announced via VHF by the Race Committee Signal Boat no later than the warning signal for each class.

8.4 - When there is a gate, boats shall sail between the gate marks from the direction of the previous mark and round either gate mark.

► **9 - MARKS**

9.1 - Marks on distance courses shall be a combination of inflatable marks, government buoys or Islands.

9.2 - Marks on W/L courses shall be inflatable marks.

9.3 - Change marks will either be different color from original mark or have black band.

9.4 - The Race Committee Signal Boat may be protected by a nearby inflatable limit mark, which shall rank as a starting mark. Boats shall not pass between a limit mark and the nearby committee boat when approaching the line to start. The area between the limit mark and the committee boat does not rank as an obstruction for the purposes of RRS 19 and 20.

► **10 - THE START**

10.1 - Races will be started in accordance with RRS 26.

10.2 - The starting line will be between a staff displaying an orange flag on the Race Committee Signal Boat and the course side of a nearby

inflatable mark.

10.3 - A boat whose warning signal has not been made shall avoid the starting area.

10.4 - No boat shall attempt to start later than 5 minutes after her class starting signal. A boat attempting to start later than 5 minutes after her starting signal shall be scored Did Not Start (DNS) without a hearing, this changes Rule A4.

10.5 - In the event of an individual recall, the sail numbers, bow numbers or identification of any boat or boats that are OCS will be announced on the designated VHF channel. Failure of a boat to see or hear her recall notification, the timing and order of such hails, or the length of time it takes to make a notification on the VHF will not be grounds for redress. (This changes RRS 29.1 and 62.1 (a)).

► **11 - CHANGE OF THE NEXT LEG OF THE COURSE**

A change of course after the start will be signaled before the leading boat has begun the leg. Any marks to be rounded after rounding the changed mark may be relocated to maintain the original course configuration. When in a subsequent change a change mark is replaced, it may be replaced by an original mark.

► **12 - THE FINISH**

The finishing line will be between a staff displaying a blue flag on a Race Committee Signal Boat and a nearby inflatable mark.

13 - PENALTIES FOR BREAKING A RULE OF PART 2

13 - PENALTIES FOR BREAKING A RULE OF PART 2

13.1 - A boat that may have broken a rule of Part 2 while racing may take a penalty at the time of the incident. The penalty may be either a one turn penalty in accordance with RRS 44.2 or a scoring penalty in accordance with RRS 44.3. Her penalty

may be either pursuant to RRS 44.2 or RRS 44.3.

Two-turns Penalty RRS 44.2 is changed such that the penalty shall be one turn including one tack and one jibe that in all other respects complies with RRS 44.2. The Scoring Penalty RRS 44.3 shall not be fewer than two (2) places. All boats that have taken a Scoring Penalty in compliance with RRS 44.3 shall submit a written declaration on a form available at the Protest Desk. Submitting a written declaration within the protest time shall satisfy the requirement in RRS 44.3(a) to inform the Race Committee at the finish line. This changes rule 44.3.

13.2 - Failure to sail the proper course: If the International Jury has determined that a boat has failed to sail the proper course but did not gain an advantage in so doing, she may be awarded a discretionary penalty. Her penalty may be any number of places including no penalty, but not greater than the number of boats entered in her class. This changes RRS 28.1

► **14 - TIME LIMITS**

14.1 - Time limits are as follows: Racing Day 1 and 2, the time limit will be four (4) hours for each race except boats sailing Buck Island courses, whose time limit will be six (6) hours. Racing Day 3, the time limit will be five (5) hours.

14.2 - The time limit will be the number of hours stated, plus each boat's corrected time difference. Boats failing to finish in these time limits will be scored DNF. This changes RRS 35 and A4.

► **15 - PROTESTS, ARBITRATION AND REQUESTS FOR REDRESS**

15.1 - Protest forms are available at the Protest Desk at St. Thomas Yacht Club. Protests shall be delivered in writing within the protest time limit. The protest time will be posted at the Protest Desk. The Protest room is located adjacent to the St. Thomas Yacht Club tennis courts.

15.2 - For each class the protest time limit is 60 minutes after its respective Race Committee Signal Boat reaches its dock or mooring.

15.3 - Protests will be heard as soon as possible after each day's racing. Protest notices will be posted and heard in the approximate order of receipt. Failure of a party to appear at a protest hearing held after the expiry of the protest filing time following the posting of protest notification will be considered as grounds for the Jury to proceed under RRS 63.3 (b).

15.4 - Any measurement disputes shall be filed with the international jury by the end of Race Day #1.

15.5 - For protests involving a breach of a rule of Part 2 of the RRS, a short arbitration hearing will be offered prior to a jury hearing. This changes Part 5, Section B of the RRS.

15.6 - A party who accepts the arbitrator's opinion that they broke a rule of Part 2 will be assessed a 40% scoring penalty as computed by RRS 44.3 (c). The 40% scoring penalty shall not be less than four (4) places.

15.7 - For the purpose of RRS N1.4 (b) the time limit for a hearing by the jury composed in compliance with RRS N1.1, N1.2, and N1.3 is within one hour after the decision is announced.

15.8 - Decisions of the International Jury will be final as provided in rule 70.5.

► **16 - SCORING**

16.1 - A boat's series score will be the sum of all her race scores.

16.2 - For protests involving a breach of a rule of Part 2 of the RRS, a short arbitration hearing will

► be offered prior to a jury hearing. After a written protest is delivered to the protest desk, one representative from each boat will meet with the arbitrator unless the protestor requests that the protest be withdrawn. No witnesses will be allowed.

Protests not resolved by arbitration will be forwarded to the International Jury. (This changes Part 5, section B.)

16.3 The arbitrator will not be a member of the Jury Panel, but will be permitted to observe the testimony from the protestor and protestee and offer testimony if called upon by the committee. This changes Part 5, Section B of the RRS.

16.4 A boat that accepts the arbitrator's opinion that she broke a rule of Part 2 shall receive a penalty score of 40% per section 13 of these sailing instructions. The 40% scoring penalty shall not be less than four (4) places.

The acceptance of an arbitrator's opinion cannot be grounds for redress.

17 - SAFETY REGULATIONS AND CHECK IN

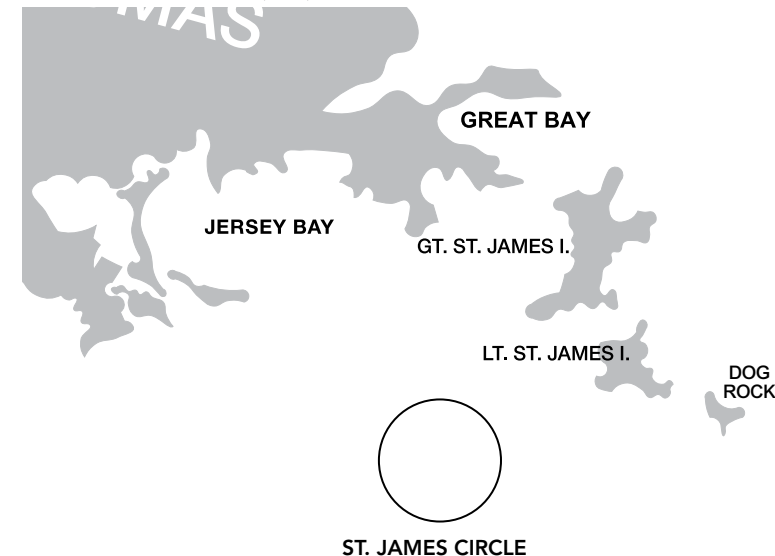
17.1 - All boats shall carry VHF radios capable of receiving communications from the Race Committee.

17.2 - Each boat shall check in with their Race Committee Signal Boat before the first warning signal of the day by sailing on a starboard tack past the stern of the Signal Boat and being acknowledged. Failure to check in with the Race Committee is subject to protest only by the Race Committee. This changes RRS 60.1 and 60.3.

17.3 - A boat that retires from a race shall notify

APPENDIX A

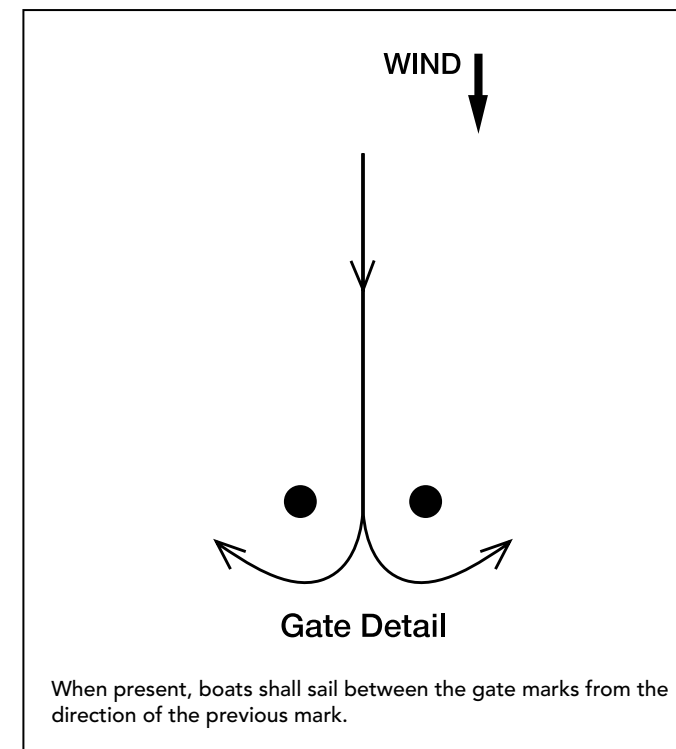
► **WINDWARD/LEEWARD (W/L) COURSE DIAGRAMS**



The location for IC24 W/L Course will be displayed on the Regatta Notice Board no later than 1800 on the evening before the notice applies.

- Course WL 2: Start, mark 1, offset, Finish
- Course WL 2A: Start, mark 1A, offset, Finish
- Course WL 4: Start, mark 1, offset, Gate, mark 1, offset, Finish
- Course WL 4A: Start, mark 1A, offset, Gate, mark 1A, offset, Finish
- Course WL 6: Start, mark 1, offset, Gate, mark 1, offset, Gate, mark 1, offset, Finish
- Course WL 6A: Start, mark 1A, offset, Gate, mark 1A, offset, Gate, mark 1A, offset, Finish

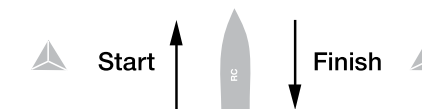
► The RANGE BEARING, and MARK DESIGNATION to the appropriate weather mark will be displayed from the Race Committee Signal Boat and/or announced on VHF.



Offset ● ● Mark 1A

Offset ● ● Mark 1

Gate ● ●



► **COURSE MARKS**

(All mark positions and distances are approximate)

MARK NAME	LATITUDE	LONGITUDE	MARK NAME	LATITUDE	LONGITUDE
Coculus Mark	18.17.72° N	64.54.43° W	Yacht Haven Grande Mark (YHG)	Will be located east of the finish line in Charlotte Amalie Harbor	
Stragglers Mark	18.18.10° N	64.50.40° W	Weather Mark	For course EH-1 will be approximately 3.0nm to windward of Coculus Mark	
Yeoman Mark	18. 18.15° N	64. 49.2° W	Leeward Mark	For courses D-4, and SJ-2 will be approximately 0.3nm to windward of the Start/Finish Line	
Dog Rock Mark	18. 17.63° N	64. 48.6° W	Reef Bay North Mark (RBN)	18. 19.10	64. 45.0
Turtle Rock Mark	18.21.15° N	64.51.21° W	Reef Bay South Mark (RBS)	18.17.80	64. 45.0
Maria Bluff Mark	18.18.71° N	64.47.73° W			
Shark Island	18.20.40° N	64.50.34° W			
Flamingo Mark	Flamingo mark should be set approx. 1.5 nm to leeward of WR1. See NH-1, NH-2, NC-1.				

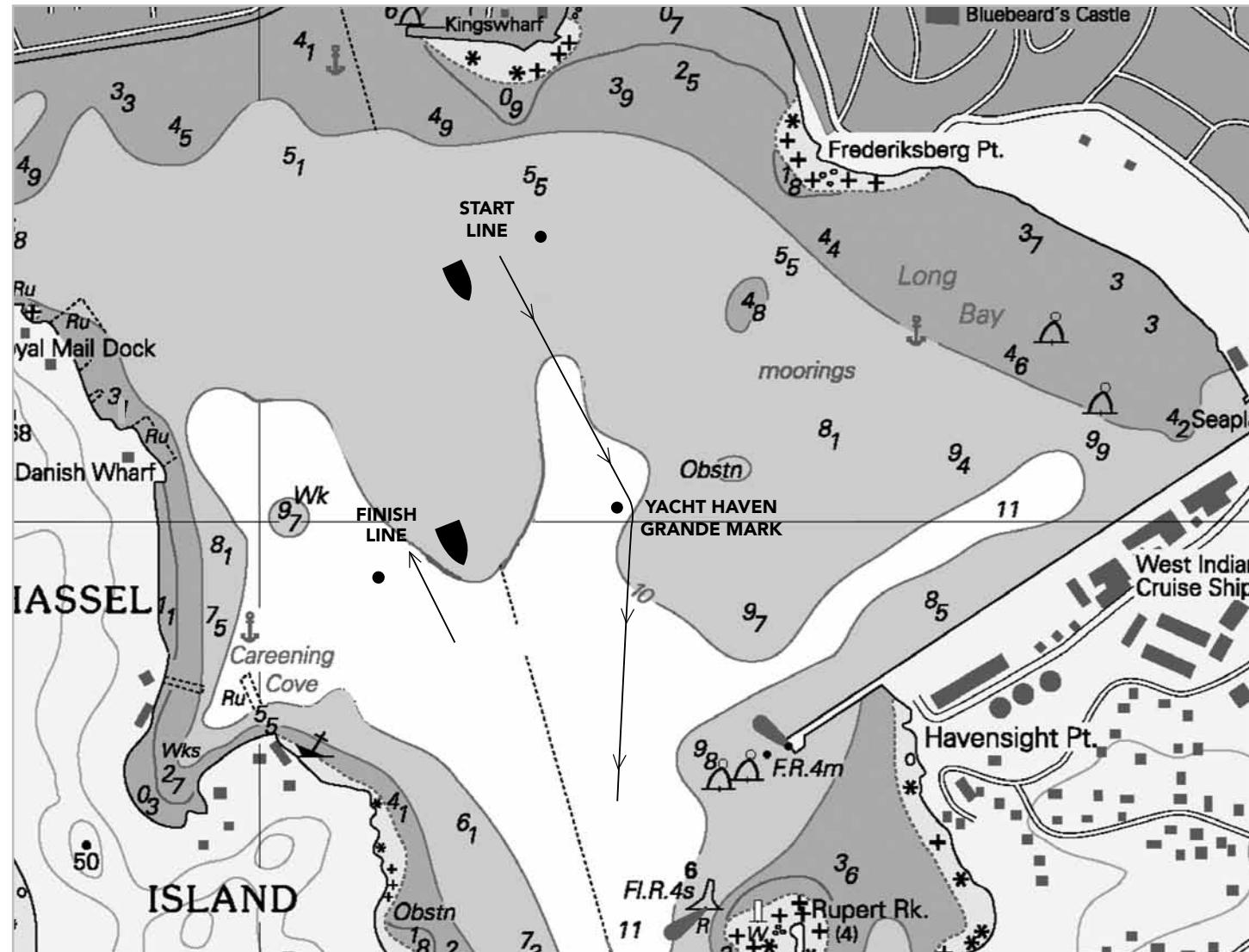
NOTE: In all course diagrams, "Mark" indicates an inflatable Rolex tetrahedron; Mark names do not appear on the inflatable. "Buoy" refers to a government buoy. Consult a navigational chart for their latitude/longitude.

START LINE: Start between the staff displaying an orange flag on the Race Committee Signal Boat and nearby inflatable mark. Cow and Calf starting area will be .05 -1.0 nm south of Cow and Calf Rocks.

FINISH LINE: Proceed to finish between the staff displaying a blue flag on the Starboard Side of the Race Committee Signal Boat and a nearby inflatable mark.

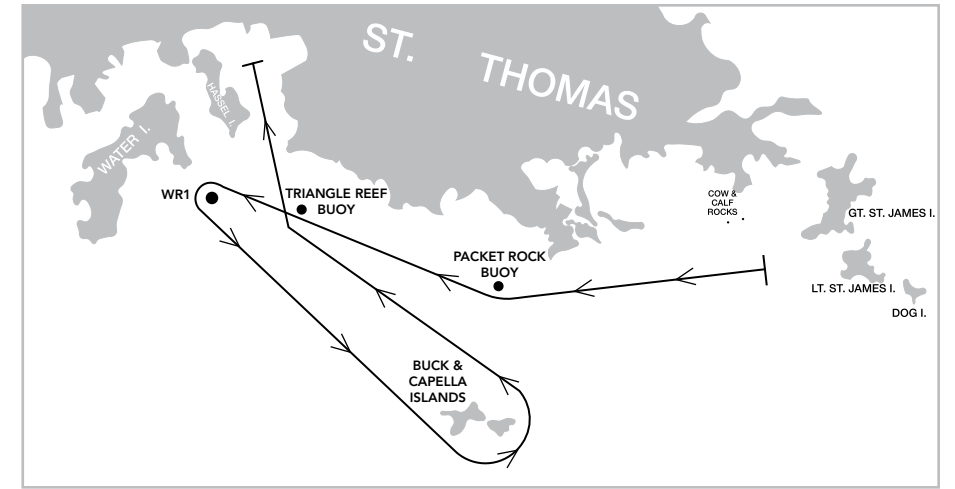
NOTE: Boats not Starting or Finishing a race shall not cross the start-finish line.

► **CHARLOTTE AMALIE HARBOR DETAIL** - Locations are approximate and are subject to adjustments as required for weather, obstructions, ect.



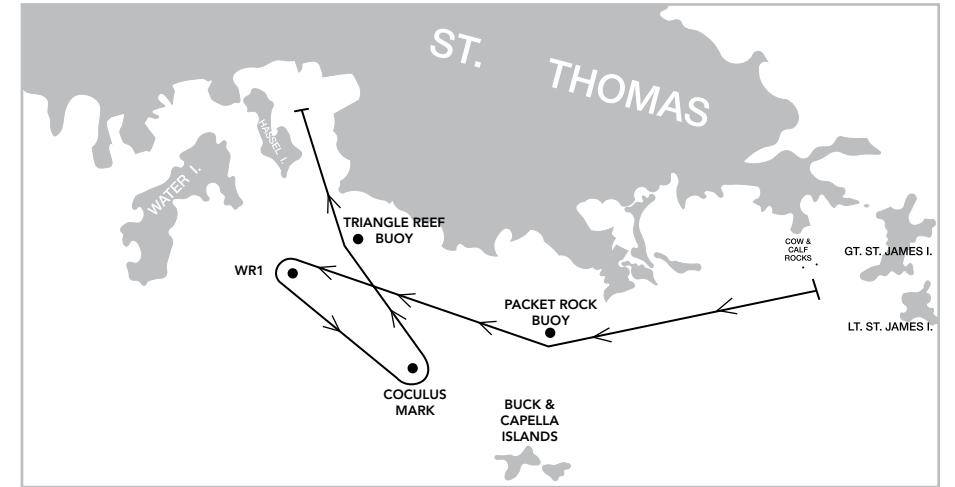
► **SH-1 South Harbor Course 1 (16 nm)**

Cow & Calf starting area.
From the start proceed to Packet Rock and Triangle Reef buoys, leaving both to Starboard.
Proceed to WR1 buoy, leaving it to Port.
Proceed to Buck & Capella Islands, leaving both to Port.
Leaving Triangle Reef buoy and Packet Rock buoy to Starboard, proceed to the finish in Charlotte Amalie Harbor.



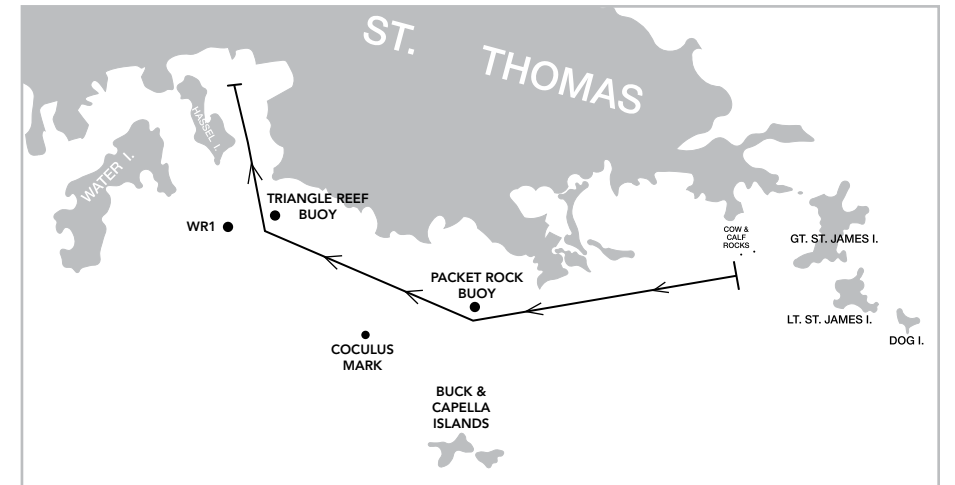
► **SH-2 South Harbor Course 2 (11nm)**

Cow & Calf starting area.
From the start, leave Packet Rock and Triangle Reef buoys to starboard, proceed to WR1 buoy leaving it to Port.
Proceed to Coculus Mark leaving it to Port.
Leaving Triangle Reef buoy to Starboard, proceed to finish in Charlotte Amalie Harbor.



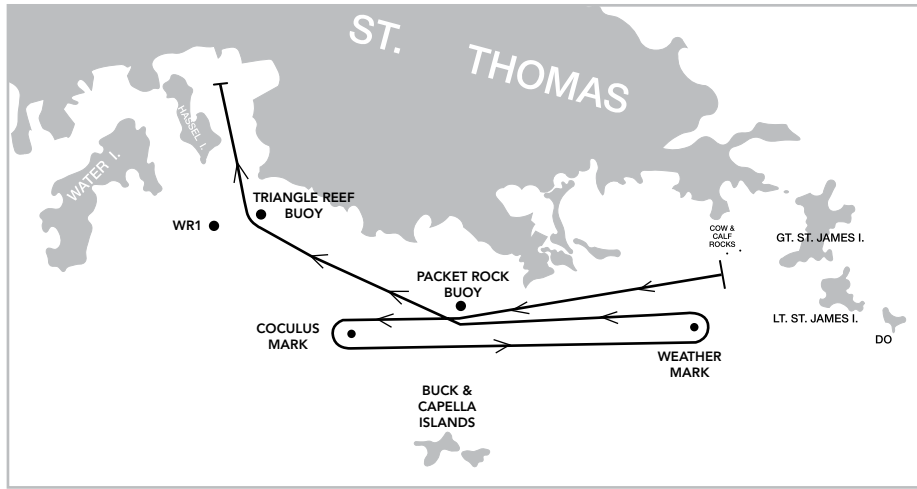
► **SH-3 South Harbor Course 3 (6nm)**

Cow & Calf starting area.
From the start, Leave Packet Rock buoy and Triangle Reef buoy to Starboard, proceed to finish in Charlotte Amalie Harbor.



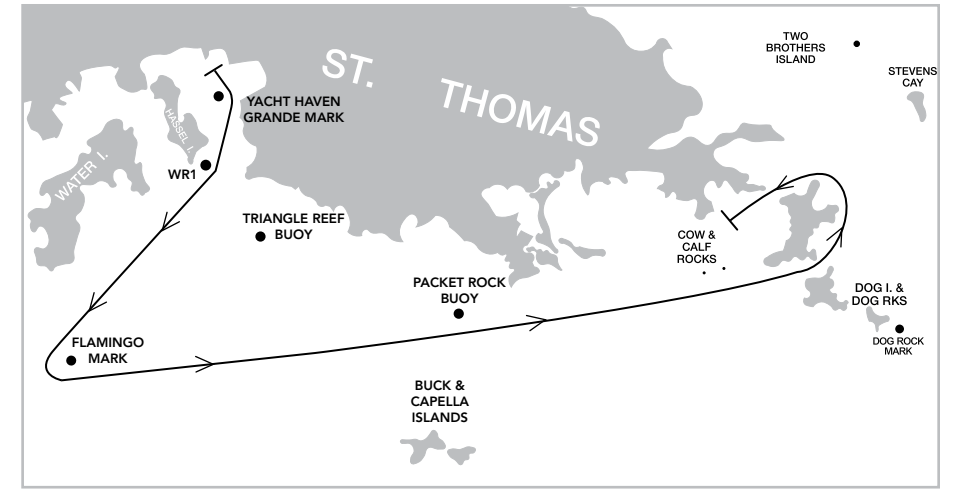
► **EH-1 East Harbor Course 1 (6nm)**

Cow & Calf starting area.
 From the start proceed to Coculus Mark, leaving it to Port. Leave Weather Mark to Port.
 Leaving Packet Rock Buoy and Triangle Reef Buoy to Starboard, proceed to Finish in Charlotte Amalie Harbor.



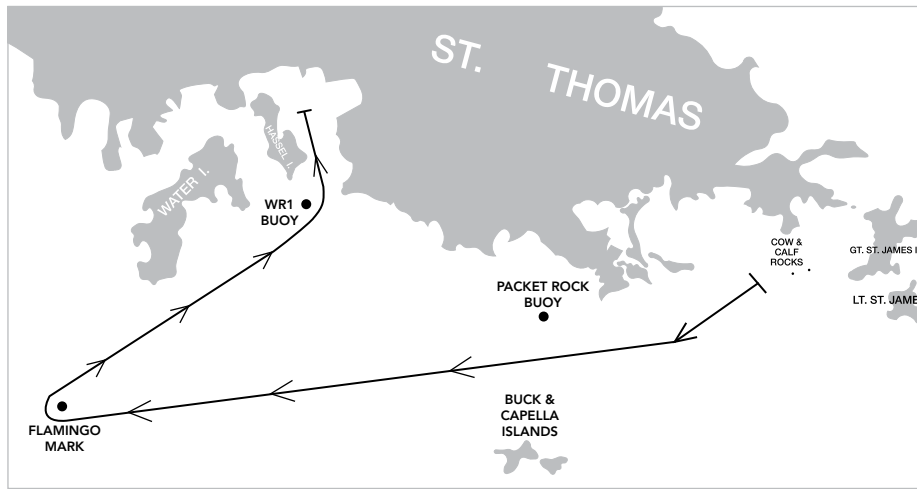
► **NC-1 North Cowpet Course 1 (13 nm)**

Charlotte Amalie Harbor starting area
 From the start proceed to YHG Mark leaving it to Starboard. Leave WR1 to Starboard
 Proceed to Flamingo Mark, leaving it to Port.
 Leaving Triangle Reef buoy and Packet Rock buoy to Port, proceed thru St. James Cut.
 Leaving Great St. James Island to Port, proceed thru Current Cut leaving Current Cut Rock to Starboard.
 Proceed to finish in Cowpet Bay.



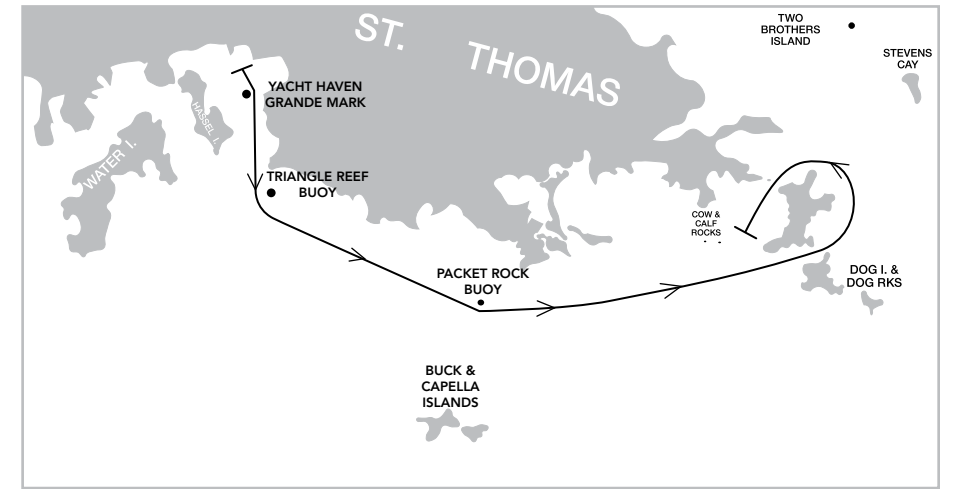
► **NH-1 North Harbor Course 1 (11nm)**

Cow & Calf starting area.
 From the start leave Packet Rock buoy to Starboard, proceed to Flamingo Mark leaving it to Starboard.
 Leaving WR1 buoy to Port, proceed to finish in Charlotte Amalie Harbor.



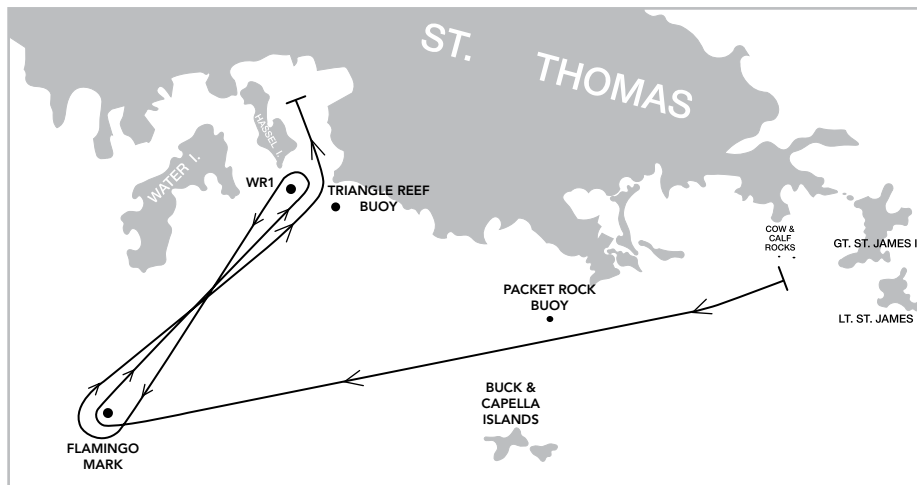
► **NC-2 North Cowpet Course 2 (9 nm)**

Charlotte Amalie Harbor starting area
 From the start proceed to YHG Mark leaving it to Starboard.
 Leaving Triangle Reef buoy and Packet Rock buoy to Port, proceed thru St. James Cut.
 Leaving Great St. James Island to Port, proceed thru Current Cut leaving Current Cut Rock to Starboard.
 Proceed to finish in Cowpet Bay.



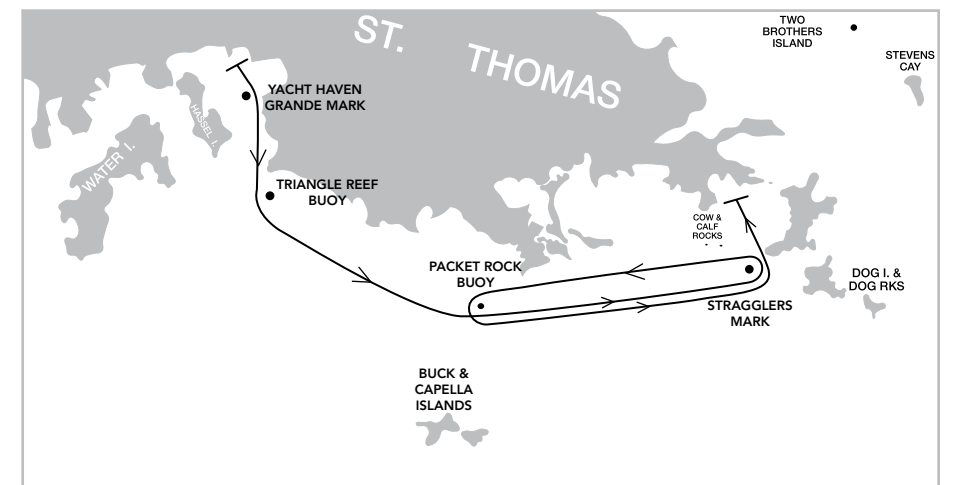
► **NH-2 North Harbor Course 2 (16 nm)**

Cow & Calf starting area.
 From the start leave Packet Rock buoy to Starboard, proceed to Flamingo buoy leaving it to Starboard.
 Proceed to WR1 buoy, leaving it to Port.
 Proceed to Flamingo Mark, leaving it to Starboard.
 Leaving WR1 buoy to Port, proceed to finish in Charlotte Amalie Harbor.



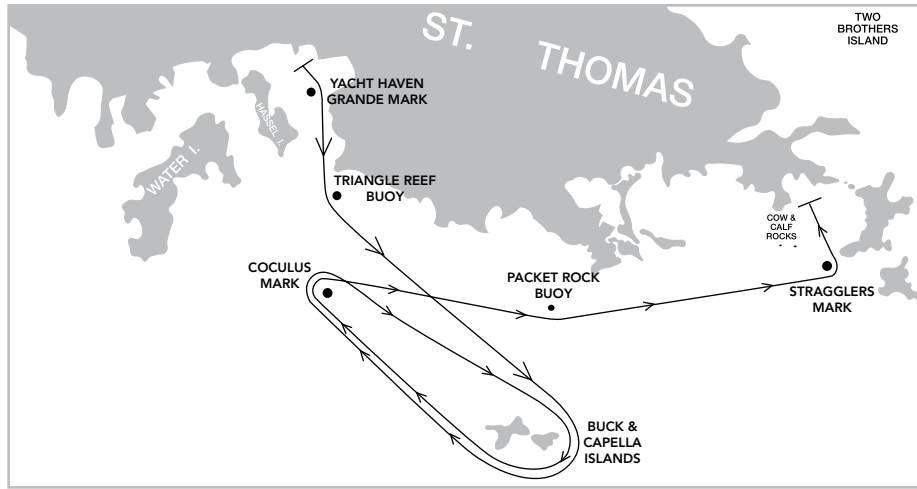
► **EC-1 East Cowpet Course 1 (13 nm)**

Charlotte Amalie Harbor starting area.
 From the Start proceed to Yacht Haven Grande mark, leaving it to Starboard.
 Leaving Triangle Reef buoy and Packet Rock buoy to Port, proceed to Stragglers Mark, leaving it to Port.
 Proceed to Packet Rock buoy, leaving it to Port.
 Proceed to Stragglers Mark, leaving it to Port.
 Proceed to finish in Cowpet Bay.



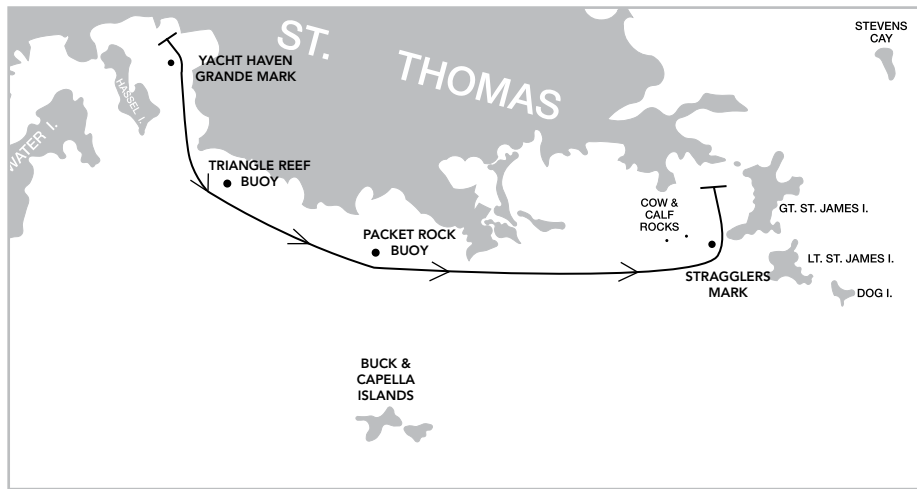
► **SC-1 South Cowpet Course 1 (18 nm)**

Charlotte Amalie Harbor starting area.
 From the start proceed to Yacht Haven Grande Mark leaving it to Starboard.
 Leaving Triangle Reef buoy to Port, proceed to Buck & Capella Islands, leaving them to Starboard.
 Proceed to Coculus Mark, leaving it to Starboard.
 Return to Buck & Capella Islands, leaving them to Starboard.
 Leaving Packet Rock buoy to port, proceed to Stragglers Mark, leaving it to Port.
 Proceed to the Finish in Cowpet Bay.

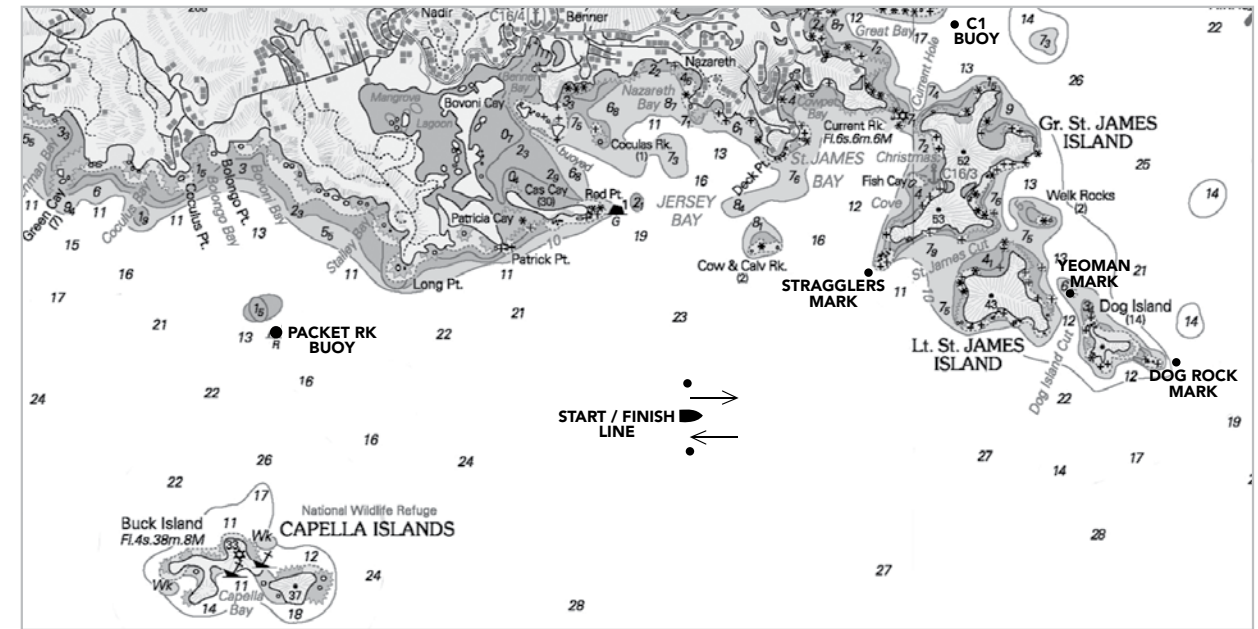


► **SC-2 South Cowpet Course 2 (12 nm)**

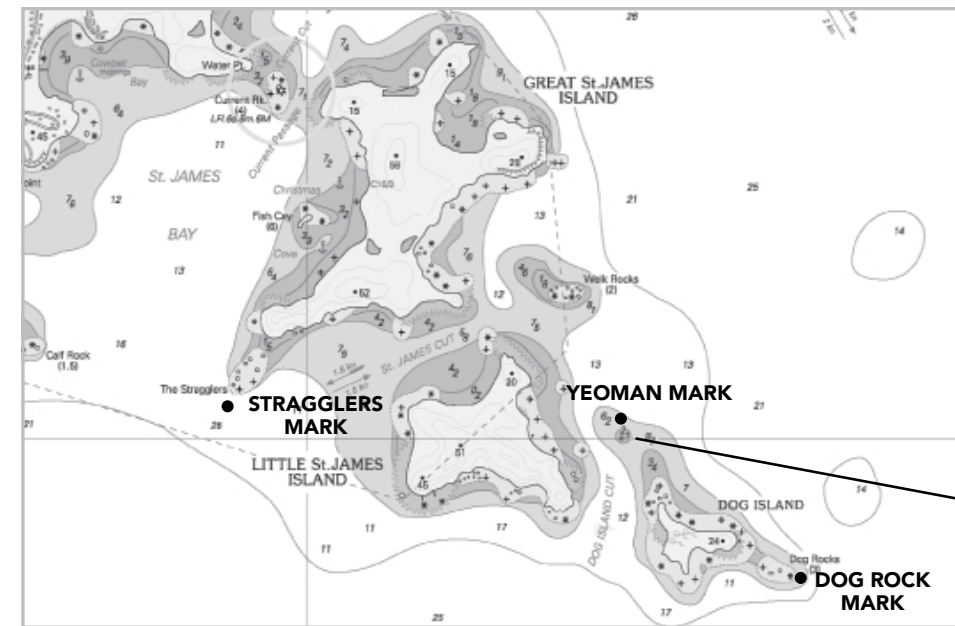
Charlotte Amalie Harbor starting area
 From the start proceed to Yacht Haven Grande mark leaving it to Starboard. Leaving Triangle Reef buoy and Packet Rock buoy to Port proceed to Stragglers Mark, leaving it to Port.
 Proceed to Finish in Cowpet Bay.



► **DOG ISLAND DETAIL A**



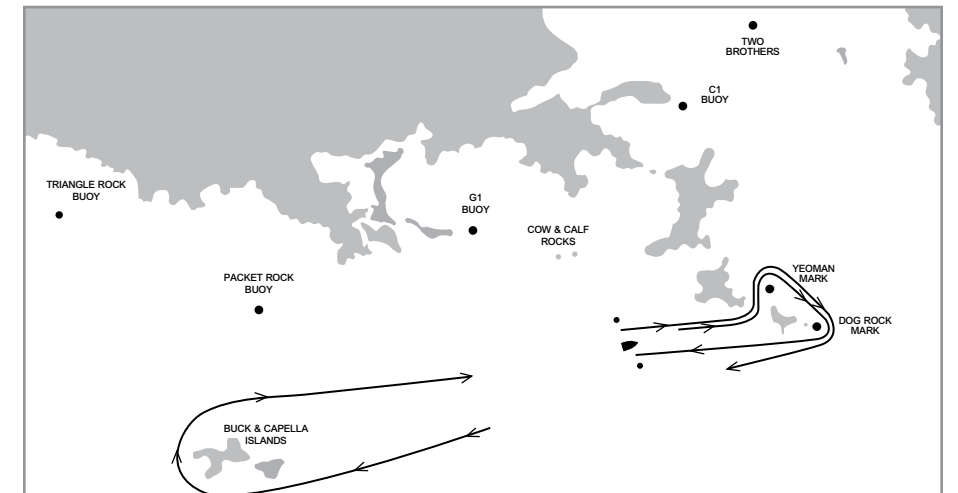
► **DOG ISLAND DETAIL B**



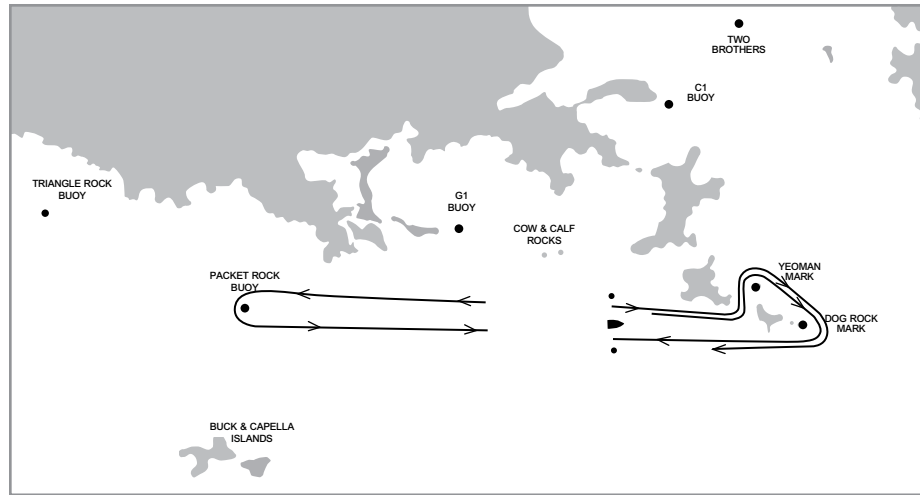
NOTE: Submerged rock may be identified by a set of small floats. These floats shall not be relied upon for navigation.

► **D-1 Dog Island Course 1 (aprox. 16.5 nm)**

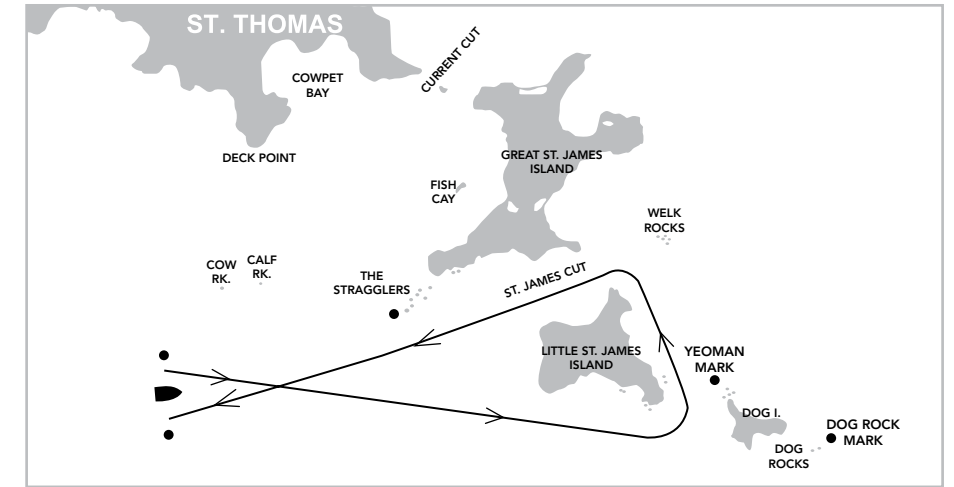
Cow & Calf starting area.
 From the start proceed through Dog Island Cut.
 Leave Yeoman Mark to Starboard, leave Dog Rock Mark to Starboard.
 Proceed to Buck & Capella Islands, leaving them to Starboard.
 Proceed thru Dog Island Cut.
 Leave Yeoman Mark to Starboard, leave Dog Rock Mark to Starboard.
 Proceed to finish.



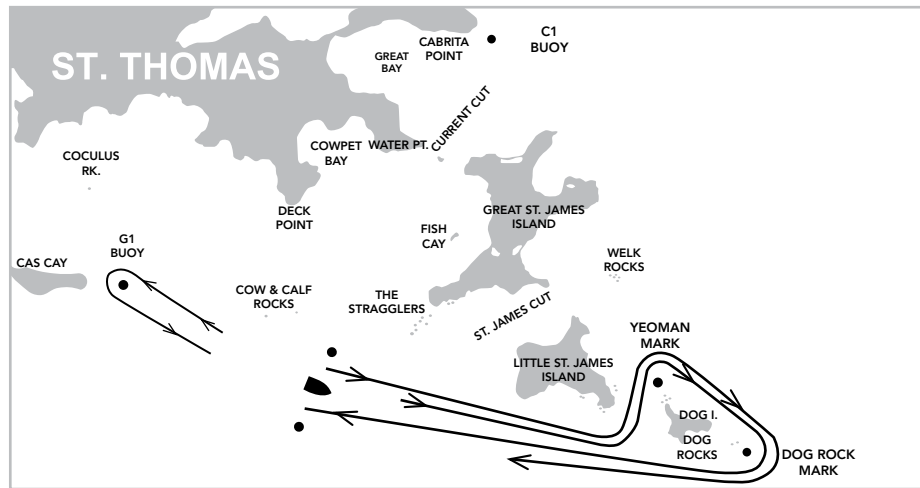
- **D-2 Dog Island Course 2** (aprox. 14.5 nm)
Cow & Calf starting area.
From the start proceed thru Dog Island Cut.
Leave Yeoman Mark to Starboard, leave Dog Rock Mark to Starboard.
Proceed to Packet Rock buoy, leaving it to Port.
Proceed thru Dog Island Cut.
Leave Yeoman Cut Mark to Starboard, leave Dog Rock Mark to Starboard.
Proceed to finish.



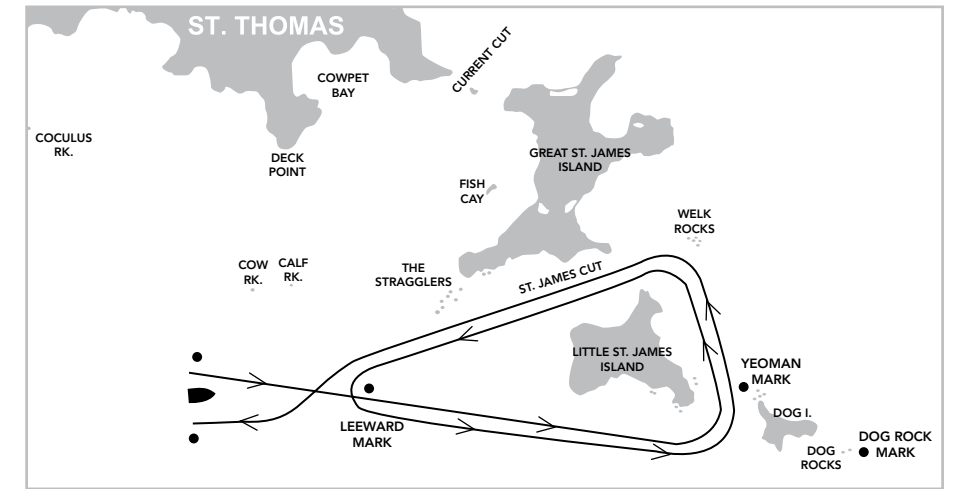
- **SJ-1 St. James Course 1** (aprox. 3.5 nm)
Cow & Calf starting area
From the start, proceed thru Dog Island Cut leaving Yeoman Mark to Starboard.
Proceed thru St. James Cut.
Proceed to finish.



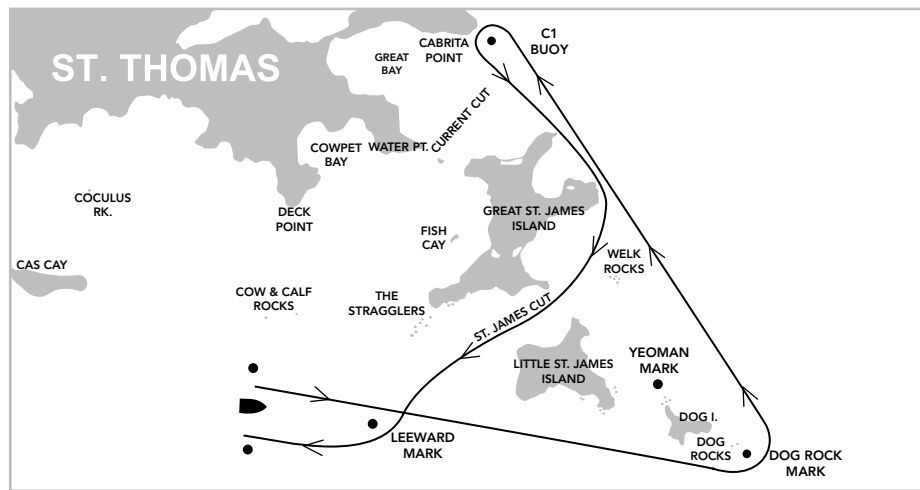
- **D-3 Dog Island Course 3** (aprox. 10nm)
Cow & Calf starting area.
From the start proceed thru Dog Island Cut.
Leave Yeoman Mark to Starboard, leave Dog Rock Mark to Starboard.
Proceed to G1 Buoy leaving it to Port.
Proceed thru Dog Island Cut.
Leave Yeoman Mark to Starboard, leave Dog Rock Mark to Starboard.
Proceed to Finish.



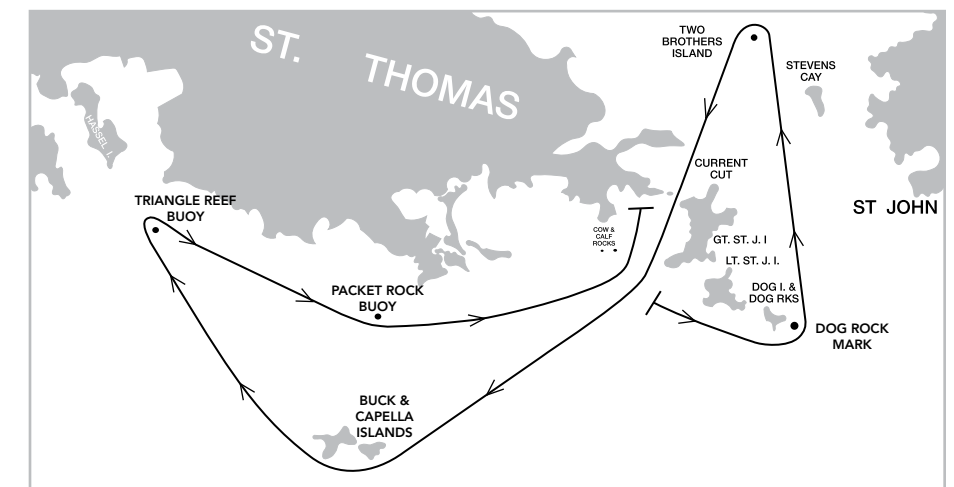
- **SJ-2 St. James Course 2** (aprox. 7 nm)
Cow & Calf starting area.
From the Start proceed thru Dog Island Cut, leaving Yeoman Mark to Starboard.
Proceed thru St. James Cut.
Proceed to Leeward Mark leaving it to Port.
Proceed thru Dog Island Cut, leaving Yeoman Mark to Starboard.
Proceed thru St. James Cut.
Proceed to finish.



- **D-4 Dog Island Course 4** (aprox. 6.8 nm)
Cow & Calf starting area
From the start proceed to Dog Rock Mark, leaving it to Port.
Proceed to C1 Buoy (Green Can off Cabrita Point), leaving it to Port.
Leaving Great St. James Island to Starboard, proceed thru St. James Cut, leaving Leeward mark to Starboard. Proceed to finish.

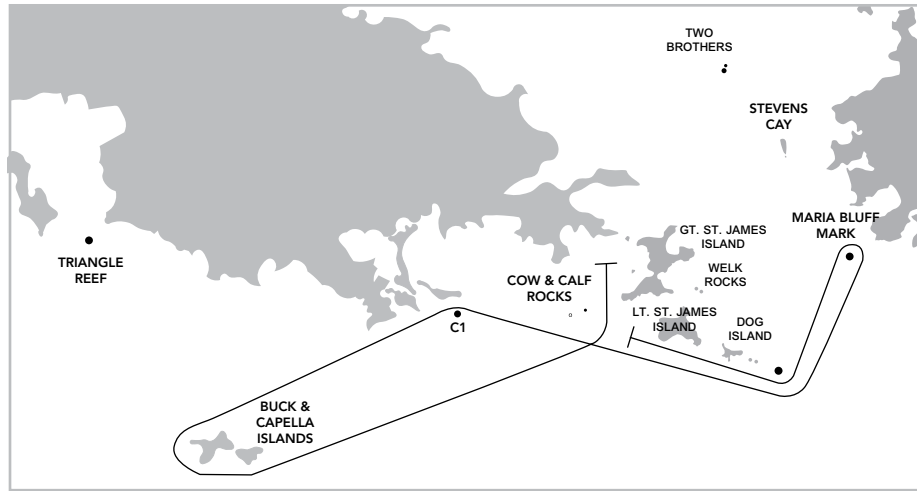


- **BI-1 Buck Island Course 1** (21.5 nm)
Cow and Calf Circle starting area
From the start, proceed to Dog Rock Mark leaving it to Port.
Proceed to Two Brothers Island, leaving it to Port. Leaving Current Cut Rock to Starboard, proceed through Current Cut to Buck & Capella Islands leaving them to Starboard.
Proceed to Triangle Reef buoy leaving it to Starboard.
Proceed to Packet Rock buoy leaving it to Port.
Leaving Cow and Calf Rocks to Port, proceed to Finish in Cowpet Bay.



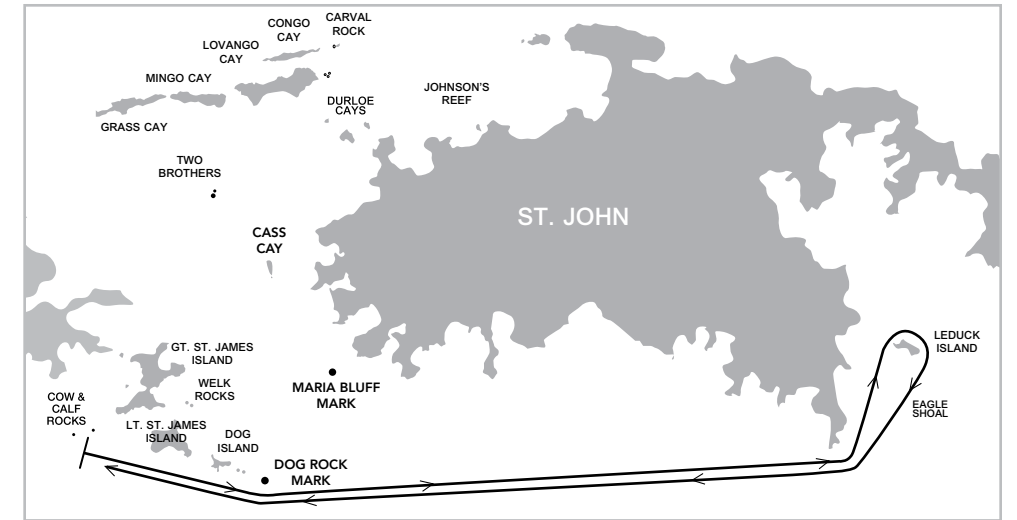
► BI-3 Buck Island Course 3 (16 nm)

Cow and Calf Circle starting area
 Leave Rog Rock Mark to Port
 Leave Maria Bluff Mark to Starboard, Leave Dog Rock Mark to Starboard, leave C1 Buoy to Port.
 Proceed to Buck & Capella Islands leaving them to Port, leave Cow and Calf Rocks to Port. Proceed to finish in Cowpet Bay



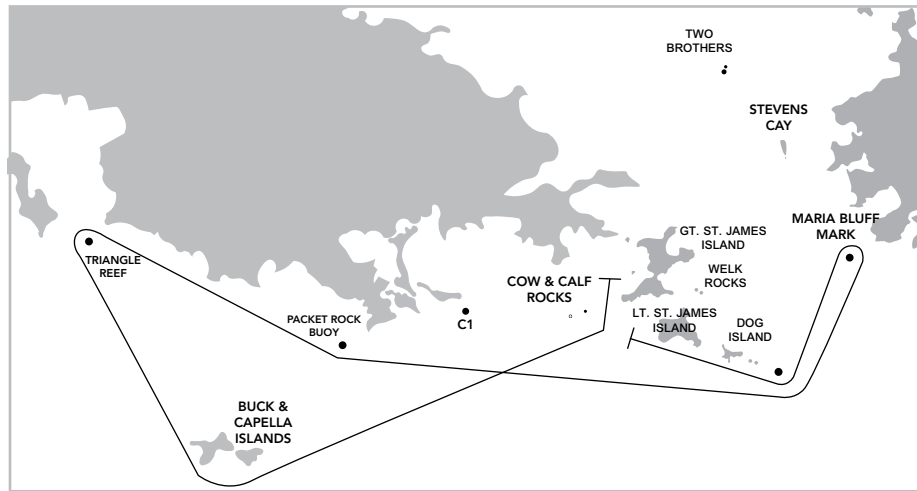
► LI-1 Leduck Island Race 1 (20nm)

Cow & Calf starting area.
 From the Start, leaving Dog Rock Mark to port, proceed via the south coast of St. John and proceed to Leduck Island, in Coral Bay, to starboard. Leave Dog Rock mark to starboard. Proceed to Finish.



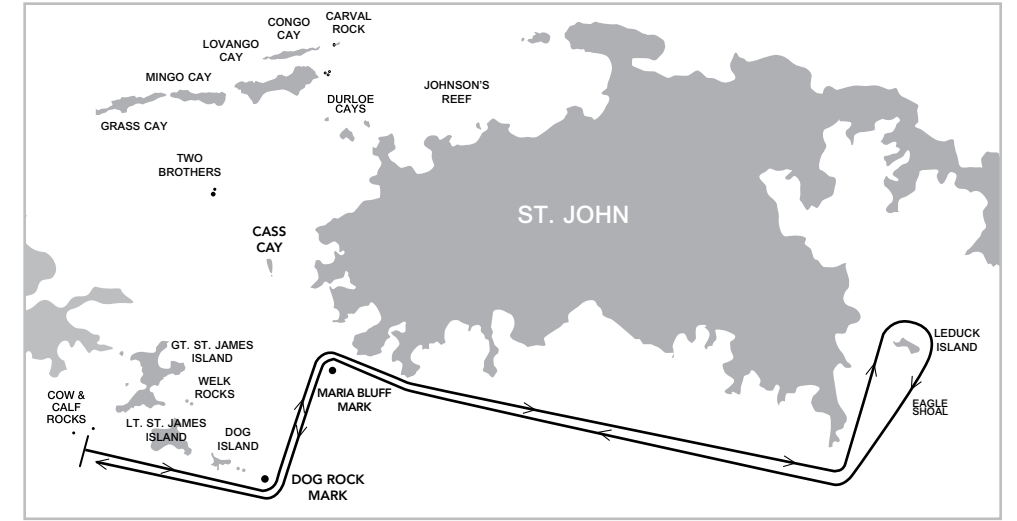
► BI-4 Buck Island Course 4 (19 nm)

Cow and Calf starting area
 From the start leave Dog Rock Mark to Port, proceed to Maria Bluff Mark leaving it to Starboard. Leave Dog Rock Mark to Starboard, Proceed to Triangle Reef Buoy leaving Packet Rock Buoy to Starboard. Leave Triangle Reef Buoy to Port, leave Buck & Capella Islands to Port, leave Cow & Calf Rocks to Port, proceed to finish in Cowpet Bay.



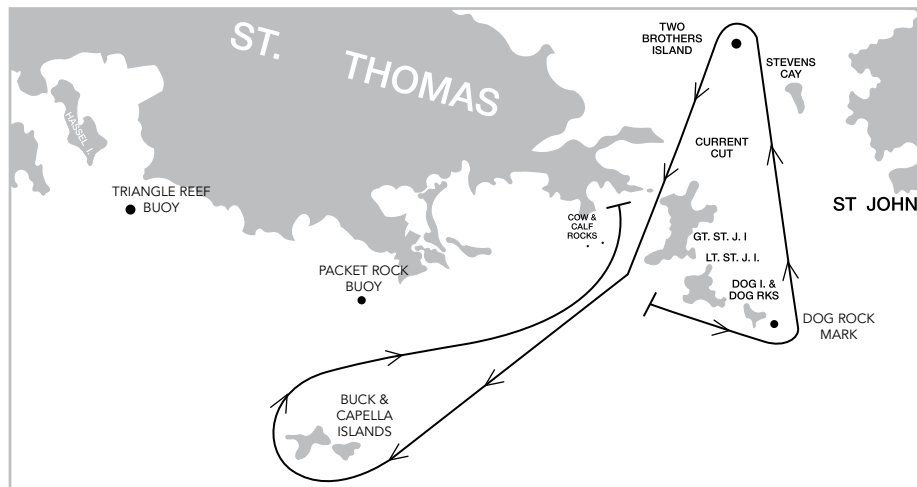
► LI-2 Leduck Island Race 2 (22nm)

Cow & Calf starting area.
 From the Start, leave Dog Rock Mark to Port, leave Maria Bluff Mark to Starboard. Proceed to the south coast of St. John and round Leduck Island, in Coral Bay, to Starboard. Leave Maria Bluff Mark to Port, Leave Dog Rock mark to starboard. Proceed to Finish.



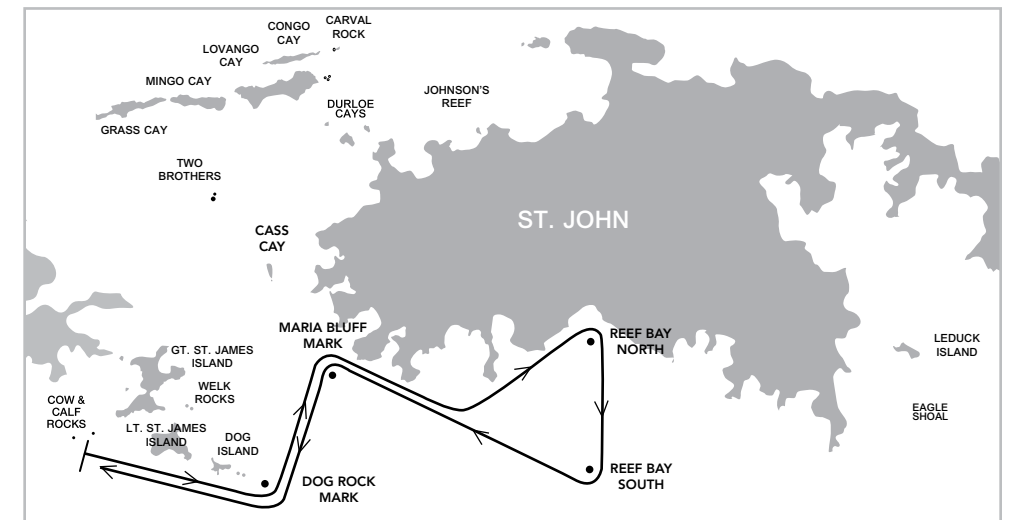
► BI-2 Buck Island Course 2 (18.5 nm)

Cow & Calf starting area
 From the start, Proceed to Dog Rock Mark leaving it to Port.
 Proceed to Two Brothers Island, leaving it to Port. Leaving Current Cut Rock to Starboard, proceed through Current Cut to Buck & Capella Islands leaving them to Starboard.
 Leaving Packet Rock buoy to Port, and Cow and Calf Rocks to Port, proceed to Finish in Cowpet Bay.



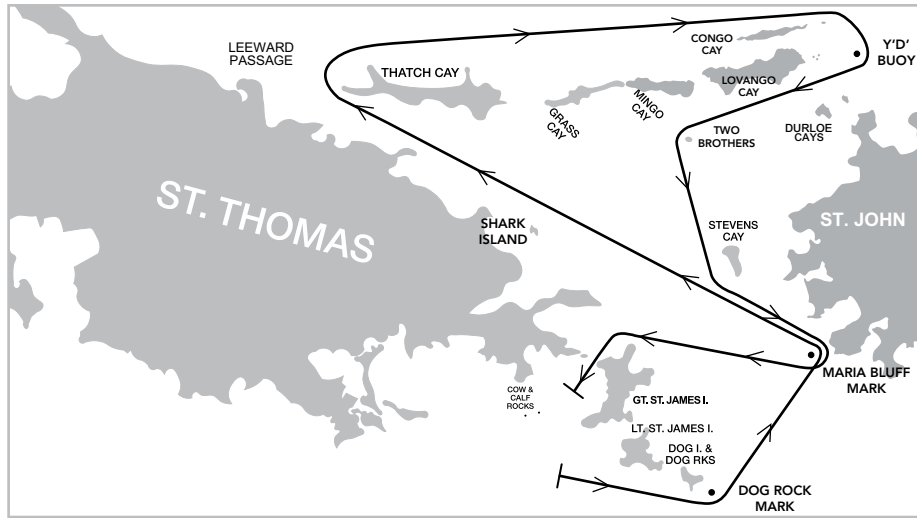
► RB-1 Reef Bay Race (14nm)

Cow & Calf starting area
 From the Start, leave Dog Rock mark to port, leave Maria Bluff Mark to starboard. Proceed via the south coast of St. John to Reef Bay. Leave Reef Bay North mark to starboard, leave Reef Bay South mark to Starboard. Leave Maria Bluff mark to port. Leave Dog Rock mark to starboard. Proceed to Finish.



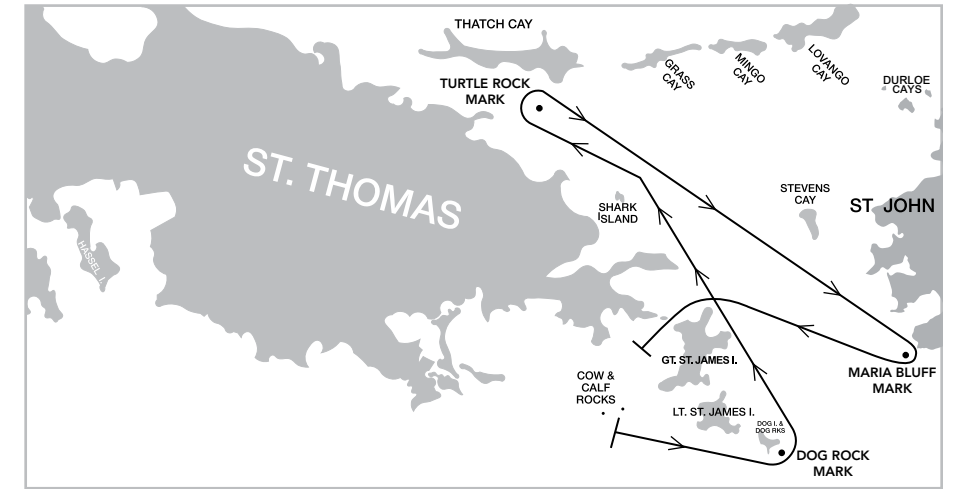
► NP-1 North Passage Course (25 nm)

Cow & Calf starting area
 From the Start, leave Dog Rock mark to port, leave Maria Bluff mark to port and leave Shark Island to port.
 Proceed thru Leeward Passage. Leaving Thatch Cay, Grass Cay, Mingo Cay, Lovango Cay, Congo Cay and Carval Rock to starboard, proceed to Y'D' Buoy (0.3nm north of "1JR") leaving Y'D' to Starboard.
 Proceed thru Windward Passage, leaving all Durløe Cays to Port.
 Proceed to Two Brothers, leaving it to Port.
 Leaving Steven's Cay to Port, proceed to Maria Bluff mark, leaving it to Starboard.
 Proceed thru Current Cut leaving Current Cut Rock to Starboard.
 Proceed to the Finish in Cowpet Bay.



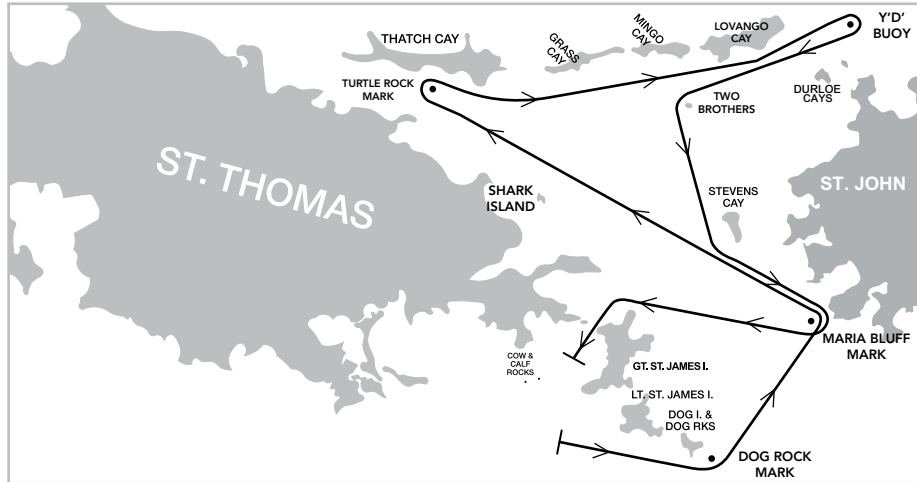
► SP-3 South Pillsbury Course (14 nm)

Cow & Calf starting area
 From the Start, leave Dog Rock mark to port and Shark Island to port proceed to Turtle Rock mark leaving it to starboard.
 Leaving Shark Island to Starboard and Steven's Cay to Port proceed to Maria Bluff mark leaving it to starboard.
 Proceed thru Current Cut leaving Current Cut Rock to Starboard.
 Proceed to the Finish in Cowpet Bay.



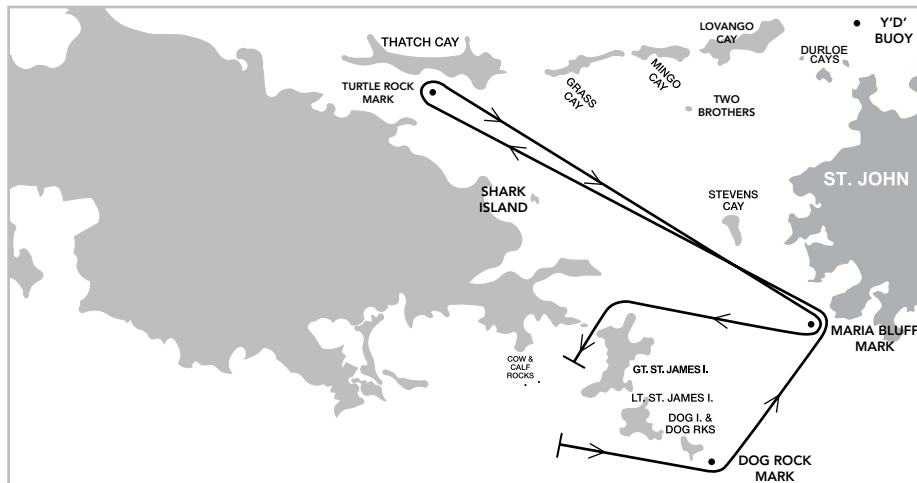
► NP-2 North Pillsbury Course (22 nm)

Cow & Calf starting area
 From the Start, leave Dog Rock mark to port, leave Maria Bluff mark to port and proceed to Turtle Rock mark, leaving it to starboard.
 Proceed thru Windward Passage leaving all Duløe Cays to Starboard.
 Proceed to buoy Y"D" (0.3nm north of Buoy "1JR") leaving Y"D" to Starboard
 Proceed thru Windward Passage, leaving all Durløe Cays to Port.
 Proceed to Two Brothers, leaving it to Port.
 Leaving Steven's Cay to Port, proceed to Maria Bluff mark, leaving it to Starboard.
 Proceed thru Current Cut leaving Current Cut Rock to Starboard.
 Proceed to the Finish in Cowpet Bay.



► SP-1 South Pillsbury Course (17 nm)

Cow & Calf starting area
 From the Start, leave Dog Rock mark to port, leave Maria Bluff mark to Port.
 Leaving Shark Island to Port, proceed to Turtle Rock mark, leaving it to Starboard.
 Leaving Shark Island to Starboard and Steven's Cay to Port proceed to Maria Bluff, leaving it to Starboard.
 Proceed thru Current Cut leaving Current Cut Rock to Starboard.
 Proceed to the Finish in Cowpet Bay.





6224 Estate Nazareth 8-58
St. Thomas
U.S.V.I. 00802-1104

Tel: +1(340) 775-6320
Fax: +1(340) 775-4701
Email: directors@rolexcupregatta.com
www.rolexcupregatta.com