

**MELGES<sup>32</sup>**

---

**2011 MIAMI**

---

CHAMPIONSHIP



**SAILING INSTRUCTIONS  
INTERNATIONAL MELGES 32 CLASS  
Melges 32 Miami Championship  
04-06 March 2011  
Hosted by Coconut Grove Sailing Club  
Event Headquarters at Miami Beach Marina**

**1 RULES**

- 1.1 This regatta will be governed by the rules as defined in *The 2009-2012 Racing Rules of Sailing (RRS)*.
- 1.2 The "class rules" for the purposes of the definition of "rules" are the International Melges 32 Class Rules (IM32CR).
- 1.3 The Organizing Authority (OA) is Coconut Grove Sailing Club and IM32CA.
- 1.4 Video and/or photographs shall not be used as evidence at protest or request for redress hearings. This changes RRS 63.6.
- 1.5 RRS 82 will not apply.
- 1.6 All boats must carry minimum equipment as required by the US Coast Guard and the IM32CR.
- 1.7 Part 5, Section B of *The Racing Rules of Sailing*, as well as Rules 44.1 and 63.1 will be changed in the Sailing Instructions (SIs) to permit Protest Arbitration.

**2 NOTICES TO COMPETITORS**

- 2.1 Notices to competitors will be posted on the official notice board located at the Miami Beach Marina (MBM), tent north of the E Dock.
- 2.2 Any questions concerning these sailing instructions, scoring, or any other racing issues shall be submitted in writing to the Race Office, tent north of the E Dock. Forms to submit inquiries are available there. All written inquiries and responses will be posted on the official notice board.

### 3 CHANGES TO SAILING INSTRUCTIONS

3.1 Any change to the sailing instructions will be posted before 0830 on the day it will take effect, except that any change to the schedule of races will be posted by 2000 on the day before it will take effect.

### 4 SIGNALS MADE ASHORE

4.1 Signals made ashore will be displayed on the main flag pole at MBM.

4.2 When flag AP is displayed ashore, '1 minute' is replaced with 'not less than 60 minutes' in the race signal AP. This changes rule Race Signals.

### 5 SCHEDULE OF RACES

5.1 Schedule:

Day	Date	Event	Time
Wednesday	02 March	Registration, Crew Weigh-in Monty's Raw Bar/Miami Beach Marina	1400-1800
Thursday	03 March	Registration, Crew Weigh-in Registration, Crew Weigh-in Opening Ceremonies/ Competitors Meeting Monty's Raw Bar/Miami Beach Marina All Boats Afloat	0800-1100 1400-1800 1800 2200
Friday	04 March	Competitors Briefing (Tent north of E Dock) Racing 1 <sup>st</sup> Warning Signal More racing to follow	0815 1100
Saturday	05 March	Competitors Briefing (Tent north of E Dock) Racing 1 <sup>st</sup> Warning Signal	0815 1100

		More racing to follow	
Sunday	06 March	Competitors Briefing (Tent north of E Dock)	0815
		Racing Warning Signal	1100
		More racing to follow	
		No warning signal after	1430
		Closing Ceremonies Awards (Monty's Raw Bar)	After racing

**5.2** Eight (8) Races are scheduled.

**5.3** The RC may conduct as many as 3 races each day.

**5.4** The O.A. and/or the R.C. reserve the right to modify the program due to weather conditions or other causes.

## **6 CLASS FLAGS**

The Class flag will be the M32 class insignia in blue on a white background.

## **7 RACING AREAS**

The racing area will be east of Key Biscayne. (See attachment A)

## **8 THE COURSES**

**8.1** No later than the warning signal, the race committee signal boat will display the course, approximate compass bearing and distance of the first leg. Failure to broadcast or to receive this notification shall not constitute grounds for granting redress. This changes RRS 62.1(a).

The information will be arranged vertically.

Example:

<b>5</b>		<i>Course</i>
<b>300</b>		<i>Approximate magnetic bearing to Mark 1</i>
<b>1.5</b>		<i>Approximate distance to Mark 1. (nautical miles)</i>

Course 4: (4 Legs) Start - 1 - 1a - Gate - 1 - 1a - Finish (Downwind)  
 Course 5: (5 Legs) Start - 1 - 1a - Gate - 1 - 1a - Gate- Finish (Upwind)  
 Course 6: (6 Legs) Start - 1 - 1a - Gate - 1 - 1a - Gate- 1 - 1a - Finish (Downwind)  
 Course 7: (7 Legs) Start - 1 - 1a - Gate - 1 - 1a - Gate- 1 - 1a - Gate - Finish (Upwind)

8.2 Marks 1 and 1a shall be rounded to port. Mark 1a is an offset mark and will be positioned to port of Mark 1.

8.3 (a) If only one Gate mark is set, boats shall round the single mark to port.  
 (b) Except when there is a change of course, the Gate will be positioned to windward of the RC Signal Boat.  
 (c) The Gate may be laid after the starting signal.

8.4 Except for when there is a change of course:  
 (a) the finish for course 4 and 6 will be to leeward of the Gate; and  
 (b) the finish for course 3, 5 and 7 will be to windward of Mark 1.

## 9 MARKS

### 9.1

	Original Marks	New Marks per SI 12.1
Mark 1	Large Orange Cylinder	Larger Yellow Cylinder
Mark 1A	5.5 ft Orange tetrahedron	5.5 ft Yellow tetrahedron
GATE	Small Orange Cylinders	Small Orange Cylinders

9.2 The starting and finishing marks will be race committee boats or a nearby inflatable mark.

## 10 AREAS THAT ARE OBSTRUCTIONS

The following areas are designated as obstructions: None.

## **11 THE START**

- 11.1** RC signal boat will display code flag L (LIMA) with one sound as it departs the harbor.
- 11.2** The starting line will be between the staffs displaying an orange flag on the starboard end signal boat and the port-end starting mark boat. In the event that the port-end mark boat is not on station, it will be replaced by an inflatable mark.
- 11.3** Individual recalls and boats disqualified under rule 30.3 will be broadcast on the VHF channel identified in SI 27.3 using bow/sail numbers (see SI 21.1). This is in addition to and changes rules 29.1 and 30.3.
- 11.4** The RC will broadcast twice the bow/sail numbers of all boats observed to be OCS at the start; it will not alter the list based on a boat's actions subsequent to the start.
- 11.5** Individual and General Recall flags will be displayed by both RC starting line boats.

## **12 CHANGE OF THE NEXT LEG OF THE COURSE**

- 12.1** To change the next leg of the course, the race committee will lay a new mark (or move the finishing line) and remove the original mark as soon as practicable. When in a subsequent change a new mark is replaced, it will be replaced by an original mark.

## **13 THE FINISH**

- 13.1** For downwind finishes, the finishing line will be between a staff displaying an orange flag on the finishing line boat and a staff displaying an orange flag on a nearby RC boat or an inflatable mark. The finishing line will be located beyond the leeward gate.
- 13.2** For windward finishes, the finishing line will be between a staff displaying an orange flag on the finishing line boat and a staff displaying an orange flag on a nearby RC boat or an inflatable mark.
- 13.3** If the race committee intends to start another race on the same day, it will display the Second Substitute (with no sound) while boats are finishing.

## **14 PENALTY SYSTEM**

- 14.1** RRS 44.1 is modified by adding the following: Except for a starting mark, the turns penalty for a Part 2 rule broken inside the zone shall be a Two-Turns Penalty as prescribed in this rule without modification. The turns penalty for a Part 2 rule broken outside the zone shall be a one turn, including one tack and one gybe. This changes RRS 44.1.

## 15 TIME LIMITS AND TARGET TIMES

15.1 Time limits and target times are as follows:

<u>Time Limit</u>	<u>Mark 1 Time Limit</u>	<u>Target Time</u>
120 mins	45 mins	90 mins

If no boat has passed Mark 1 within the Mark 1 time limit the race will be abandoned. Failure to meet the target time will not be grounds for redress. This changes rule 62.1(a).

## 16 PROTESTS AND REQUESTS FOR REDRESS

16.1 For protests involving an alleged breach of RRS Part 2, a short arbitration hearing may be held prior to the protest hearing.

16.2 Protest forms are available at the race office, north of the E dock at MBM. Protests and requests for redress or reopening shall be delivered there within the appropriate time limit.

16.3 The protest time limit is 60 minutes after the RC signal boat docks at MBM. The docking time will be posted on the official notice board. The same time limit applies to protests by the RC about incidents they observe in the racing area and to requests for redress. This changes rules 61.3 and 62.2.

16.4 Notices will be posted no later than 30 minutes after the protest time limit to inform competitors of hearings in which they are parties or named as witnesses. Hearings will be held in the protest room, located at MBM, beginning at the time posted.

16.5 Notices of protests by the race committee will be posted to inform boats under rule 61.1(b).

16.6 Breaches of instructions 18, 21, 24, 27, 31, 32 and 33 will not be grounds for a protest by a boat. This changes rule 60.1(a). Penalties for these breaches may be less than disqualification if the protest committee so decides. The scoring abbreviation for a discretionary penalty imposed under this instruction will be DPI.

**16.7** On the last scheduled day of racing a request for reopening a hearing shall be delivered

(a) Within the protest time limit if the requesting party was informed of the decision on the previous day;

(b) No later than 30 minutes after the requesting party was informed of the decision on that day. This changes rule 66.

**16.8** On the last scheduled day of racing a request for redress based on a jury decision shall be delivered no later than 30 minutes after the decision was posted. This changes rule 62.2.

**16.9** If the race committee posts a list of boats scored OCS, ZFP or BFD on the official notice board before the protest time limit, a request for redress based on such a posted score shall be made no later than one hour after the protest time limit. This changes the first sentence of rule 62.2.

## **17 SCORING**

**17.1** The Low Point Scoring System of RRS Appendix A will apply, with the following modification: when fewer than six races have been sailed, a boat's series score will be the total of all her race scores; when six or more races have been sailed, a boat's series score will be the total of her race scores excluding her worst score. Eight (8) races are scheduled; three (3) races must be completed to constitute a regatta. This changes rule Appendix A2.

## **18 SAFETY REGULATIONS**

**18.1** A boat that retires from a race or leaves the racing area between races shall notify the race committee as soon as possible.

## **19 REPLACEMENT OF CREW OR EQUIPMENT**

**19.1** Substitution of competitors will not be allowed without the prior written approval of the race committee and IM32CA Administrator Joy Dunigan for the race to which it applies.

**19.2** Substitution of damaged or lost equipment will not be allowed unless authorized by the race committee. Requests for substitution shall be made to the committee at the first reasonable opportunity.

## 20 EQUIPMENT AND MEASUREMENT CHECKS


**20.1** A boat or equipment may be inspected at any time for compliance with the class rules and sailing instructions. On the water, a boat can be instructed by a race committee equipment inspector or measurer to proceed immediately to a designated area for inspection.

## 21 ADVERTISING, BOW NUMBERS, IDENTIFICATION/EVENT STICKERS

**21.1** Boats shall display bow numbers and event bow stickers during the event as provided by the OA shall be attached to both sides of the boat's hull at all times while racing. The instructions as to position will be supplied by the organizing authority at registration. It is the responsibility of the crew to ensure the numbers and stickers remain on the boat and obtain replacements as necessary.

## 22 OFFICIAL BOATS

Official boats will be marked as follows:

RC Signal Boat/ Port-end line boat/ Windward mark/stake boat	Blue Race Committee flag 
Protest Committee boats	White Flag with Black 'J'
Press Boats	Yellow Flag with Black 'P'
RC Measurement/Equipment Check Boat	White Flag with a Black 'M'

## 23 SUPPORT BOATS

**23.1** Restrictions on Support Boats shall apply as described in International Melges 32 Class Rule C.11 OUTSIDE ASSISTANCE.

**23.2** Only support boats that have registered with the RC and carry identification provided by the RC will be allowed in the racing area.

## 24 TRASH DISPOSAL

Boats shall not put trash in the water.



## **25 HAUL-OUT RESTRICTIONS**

Boats shall not be hauled out during the regatta except with and according to the terms of written permission of the race committee.

## **26 DIVING EQUIPMENT AND PLASTIC POOLS**

Intentionally left blank

## **27 RADIO COMMUNICATIONS**

- 27.1 Except in an emergency, a boat shall neither make radio transmissions while racing nor receive radio communications not available to all boats. This restriction also applies to mobile telephones.
- 27.2 The RC will use VHF radio to communicate to the fleet, including the location of the starting area, countdown to the start, OCS bow/sail numbers, General Recalls and Postponements. Failure to make these broadcasts or failure to hear them shall not constitute grounds for granting redress. This changes rule 62.1.
- 27.3 VHF channel 71 will be used to communicate with competitors.

## **28 PRIZES**

- 28.1 Prizes for winning helmsman and each crew member for the top five boats overall.
- 28.3 Daily Prizes for the winner of each race will be presented.
- 28.4 Additional Prizes may be awarded at the discretion of the RC and OA.

## **29 DISCLAIMER OF LIABILITY**

Competitors participate in the regatta entirely at their own risk. See rule 4, Decision to Race. The organizing authority will not accept any liability for material damage or personal injury or death sustained in conjunction with or prior to, during, or after the regatta.

## **30 INSURANCE**

The boat is required to hold adequate third-party insurance, and it is the owner or owner's representative's sole and inescapable responsibility to ensure that the insurance is in place and is adequate.

## **31 CAMERAS & ELECTRONIC EQUIPMENT**

Boats may be required to carry cameras, sound equipment or positioning equipment as provided and specified by the organizing authority.

## **32 MEDIA RIGHTS**

Competitors grant the Organizing Authority and IM32CA, the unrestricted right and permission to use the name and the image for any text, photograph or video footage of either themselves or the boat they are sailing during the event to be published or broadcast in any media whatsoever (including but not limited to Press and TV advertisements or Internet), for either editorial or advertising purposes or to be used in press information; in this respect, competitors' names and any biographical material of themselves may also be used or reproduced in any way known. As part of the registration process, each individual participating crewmember will be required to sign a declaration accepting this waiver of rights.

## **33 BERTHING**

**33.1 Boat Launching and Boat Storage.** For information and arrangements regarding boat launching and storage contact the IM32CA at +1 (912) 398-5776.

**Dockage** - Miami Beach Marina +1 (305) 673-6000

Principal Race Officer:

Hank Stuart --- [hstuart8m@yahoo.com](mailto:hstuart8m@yahoo.com) --- 585-414-6105 cell

**IM32CA Administrator**

**North American Fleet Secretary**

**Joy Dunigan**

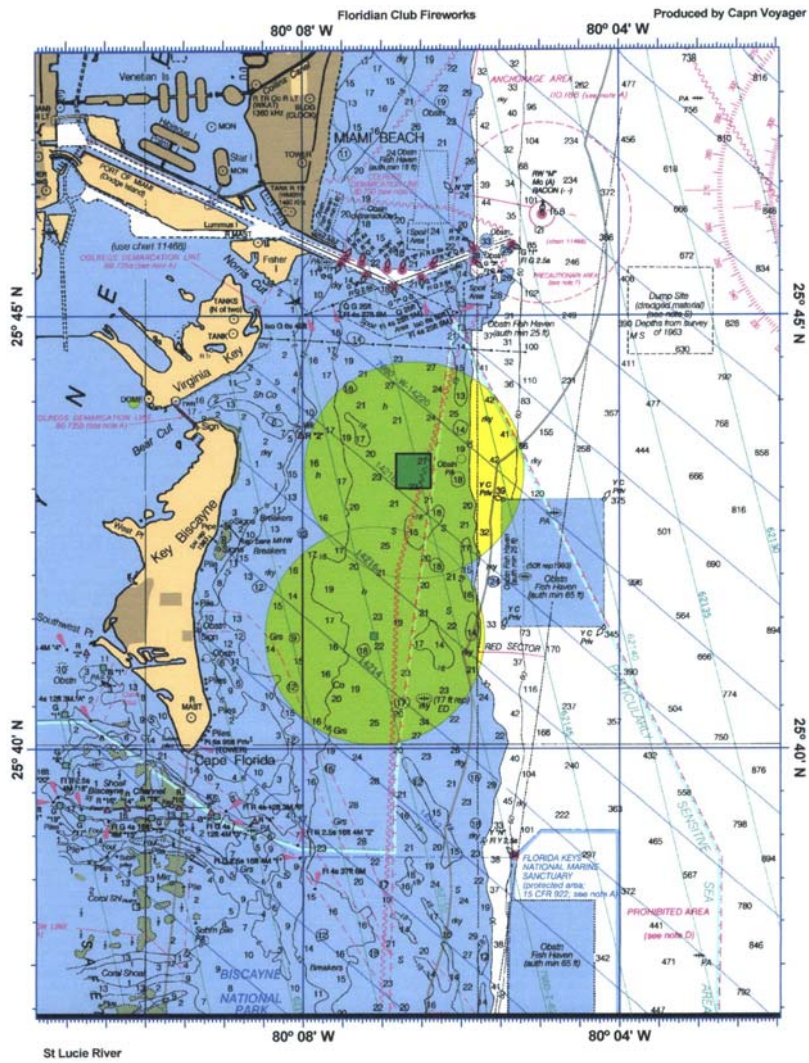
[joy.dunigan@melges32.com](mailto:joy.dunigan@melges32.com)

P (Office): 912-756-6706

P (Mobile): 912-398-5776

# ATTACHMENT A

## VENUE- Racing Area



*Not to be used for navigation*

## Attachment B - ARBITRATION

1. After a protest has been lodged in accordance with the Sailing Instructions, both parties involved in protests alleging a breach of a rule of RRS Part 2 and only two boats shall be heard by an Arbitrator appointed by the Protest Committee (PC).

1.1 In exception to the above, incidents where damage is involved shall not be subject to arbitration, but shall be referred directly to the PC for a hearing.

2. Only one representative from each boat involved, who shall have been on the boat at the time the incident occurred, shall attend the arbitration hearing. No witnesses shall be allowed.

3. The validity of the protest, rule 63.5, will be determined. If the appropriate parts of rule 61 have been met arbitration will continue. If the appropriate sections of rule 61 have not been met, the arbitrator may rule the protest invalid. The protestor may accept the ruling or have the protest referred to the PC.

4. The arbitrator will have each party describe the incident, limiting each party to approximately 3 minutes. After hearing these descriptions, the arbitrator will offer one of the following opinions:

a.) No rule was broken. If the protesting boat accepts this opinion she can agree to withdraw the protest and the protest is then settled.

- b.) A rule was broken by one of the boats involved.  
If that boat accepts this opinion she may accept a 40% scoring penalty and the protest is then settled.
  - c.) Both boats broke a rule.  
If both boats accept this opinion and each agrees to accept a 40% scoring penalty then the protest is then settled.
  - d.) The arbitrator is unable to offer an opinion based on the brief description given by the parties.
5. Once the protest has been settled under 4(a), 4(b) or 4(c) above, the arbitrator shall record this on the protest form and the matter shall not thereafter be referred to the PC and is not subject to requests for redress, reopening or appeal by any party.
- 5.1 If however:
- (i) The protestor does not withdraw the protest under 4(a) above; or
  - (ii) If a competitor does not accept the arbitrator's opinion that she broke a rule under 4(b) or 4(c); or
  - (iii) If the arbitrator is unable to offer an opinion under 4(d), the protest shall be submitted to the PC for a hearing.
6. If the arbitrator's opinion is not accepted, there shall be no further discussion of the incident with the parties and the testimony given at the arbitration hearing shall remain confidential and shall not be discussed with any person prior to the hearing.
7. If a party fails to attend, the arbitration may still be heard, as in rule 63.3(b).
8. When protests are submitted to the PC, the arbitrator shall not be a member of the panel hearing the protest; however, he/she may be called as a witness. Unless called as a witness, the arbitrator shall not discuss the matter with PC members until after the decision has been posted.
9. Application of the 40% penalty shall be calculated in accordance with rule 44.3, except that the penalty is modified to read 40%. This changes rule 44.3.