



2017

Wednesday Night Twilight Series

Presented by Indian Harbor and Old Greenwich Yacht Clubs

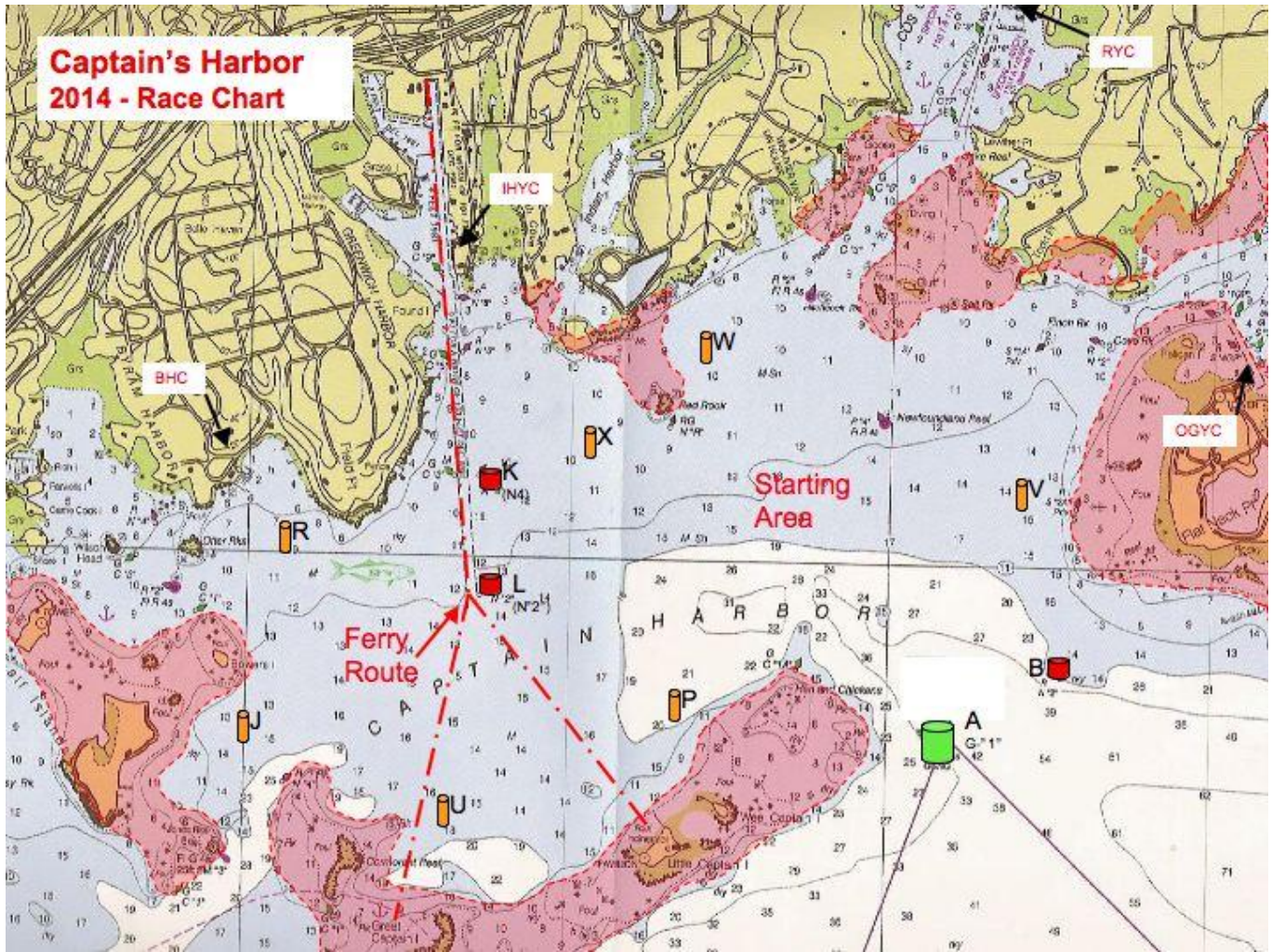


Sailing Instructions

- RULES** The series will be governed by the rules as defined in *The Racing Rules of Sailing*. US Sailing Prescriptions Appendix T and V apply.
- ELIGIBILITY** Only boats with a 2017 YRALIS PHRF certificate will be eligible for Prizes. Boats without a 2017 PHRF certificate will be assigned a rating by the Race Committee.
- ENTRY** All boats shall register via Yacht Scoring (www.yachtscoring.com).
- CLASSES**
- | Class | PHRF Band | Class Flag |
|-------|----------------|-------------------|
| I | PHRF <= 89 | Numeral pennant 1 |
| II | PHRF 90 to 159 | Numeral pennant 2 |
| III | PHRF >= 160 | Numeral pennant 3 |
- SAILS** Jib and main only. No spinnakers, gennikers or bloopers. No more than one sail at any time in the fore triangle except during a seamanlike sail change.
- SCHEDULE**
1855 first warning every Wednesday from May 17 to August 23
1825 first warning August 30 and September 6
1800 Prize gathering and barbecue at Indian Harbor September 13
- RACING AREA** Races will be held inside Captain Harbor
- MARKS** Marks are described in Addendum A
- COURSES** Pre-configured courses (Addendum B) will be signaled by a letter beneath the class number on the Committee Boat. Classes without a course designation beneath their class number shall sail the course of the next faster rated class to have a course.
- Once the courses are posted, the Race Committee may not signal a different course without indicating the new course by hoisting “L” with one sound signal and a radio hail via VHF #65.
 - The Race Committee may signal twice around by adding a “2” under the course letter. When twice around is indicated, mark T is not part of the course until the finish. For example, if Course A is B-X-Finish, then Course A2 is B-X-B-X-Finish (T).
- THE START** The starting sequence will be in accordance with RRS 26.
- The start line will be between a yellow flag on the RC boat at the starboard end of the line and the course side of a nearby mark at the port end of the line.
 - The Race Committee may start classes together by displaying the appropriate class flags together.
- THE FINISH** The finish line will be between a yellow flag on the RC boat and an adjacent mark.
- TIME LIMIT** 2045 for all Classes. Boats that do not finish within the time limit shall be scored DNF.
- SHORTEN COURSE** Races may be shortened per rule 32 except that races may not be shortened at the first turning mark.
- PENALTIES WHILE RACING** Appendix V1, Penalty at the Time of the Incident applies whereby a boat may take a One-Turn Penalty when she may have broken a rule of Part 2 or rule 31 while racing, but when she may have broken a rule of Part 2 while in the zone around a mark other than a starting mark, her penalty shall be a Two-Turns Penalty.

PROTESTS	Boats shall announce their intention to protest or any penalty turns taken via VHF #65 when they finish and repeat such announcements until acknowledged by the Race Committee. Protests shall be in writing and delivered to either sponsoring club's Race Committee (or its designee), no later than 2 hours after finishing (the "protest time limit").
POST-RACE PENALTIES	Appendix V2, Penalty Taken After A Race applies whereby a boat may take a post-race penalty of 30% per rule 44.3(c) but shall not be taken after a protest hearing involving the incident has begun.
ARBITRATION	Appendix T applies.
SCORING	<p>Series scores will be based on a high point percent-of-perfection scoring system.</p> <ul style="list-style-type: none"> • Race results will be scored based on time-on-time and use YRA of LIS PHRF non-spinnaker ratings. • Only boats that start will be scored. • Boats that start and do not finish will be awarded points equal to the number of boats that finished within the time limit minus two but not less than zero. • A boat will qualify for the series by racing 50% of the races sailed rounded down. • Up to two races above the number required to qualify will be thrown out for scoring purposes.
COMMUNICATIONS	<ul style="list-style-type: none"> • The Race Committee will monitor and broadcast on VHF #65. • The race committee may make courtesy announcements regarding timing of the next race, the course, boats OCS, etc. Failure to make or hear such broadcasts shall not be grounds for redress. This changes Rule 62.1.
PRIZES	<p>At the prize night gathering and barbeque at Indian Harbor, September 13, IHYC will award class prizes for 1st through 3rd place.</p> <ul style="list-style-type: none"> • Indian Harbor Yacht Club will also award class prizes for 1st through 3rd based on rescoring IHYC boats only. The Doremus Trophy will be awarded to the Indian Harbor boat that in the opinion of the flag officers (or their designee) has demonstrated the most outstanding performance. • Old Greenwich Yacht Club will award class prizes for 1st through 3rd based on rescoring OGYC boats only. The Commodore Kannenberg Trophy will be awarded to the best overall OGYC member finisher.
DISCLAIMER OF LIABILITY	Competitors participate in the series entirely at their own risk. See RRS 4, Decision to Race. The organizing authority will not accept any liability for material damage of personal injury or death sustained in conjunction with or prior to, during, or after the series.

ADDENDUM A



- (1) Red Rock buoy & New Foundland Reef buoy are deemed to be marks of the course and shall be passed to the south
- (2) Hen & Chicken Can C-1A is deemed to be a mark of the course and shall be passed to the north

Marks

A	Bell "G-1" flasher) Little Captain Island Reef.	L	Red Nun "2". Greenwich Harbor.	Q	Special Mark approximately 1/4 mi. to leeward of start.	V	Special RYC Mark West of Sugar Boat.
B	Red Nun "2", Flat Neck Point	M	Special reaching Mark , positioned on a line which is an extension of the starting line.	R	Special BHC Mark off the Belle Haven Club	W	Special RYC Mark 1/4 mi ENE of Red Rock.
C	Special Mark approx. 1 1/2 mi. to windward of Start. RC may Indicate magnetic bearing.	N	Special Mark approximately 1/2 mi. to leeward of the start.	S	Special Mark approximately 3/4 mi. to windward of the start RC may indicate magnetic bearing	X	Special IHYC Mark SW of Tweed Island.
J	Special IHYC Mark off Calf Island	O	Special Mark approximately 100 ft. windward of the starting line.	T	Start & Finish line Mark, adjacent to RC Signal boat, may also be used as Special Mark.	Y	Special Mark approximately 1/2 mi. RC may indicate magn. Bearing .to windward of start.
K	Red Nun "4", Greenwich Harbor.	P	Special RYC Mark north of Wee Captain Island.	U	Special IHYC Mark NNE of Great Captain Island Light.	Z	Special Mark approximately 1 mi. to windward of start. RC may indicate magnetic bearing.

ADDENDUM B

						For R/C	
Course Name	Marks & Rounding Order	Round (leave) all Marks to	Wind is from the	Start area		Finish Direction	2x OK
				east end	west end		
A	B X	Port	Southeast	2.5	2.5	Upwind	Yes
AT	B X T X	Port		3.5	3.5	Upwind	No
B	B V X	Port		2.7	2.7	Upwind	Yes
D	A V	Port	South	1.5	1.5	Reach	No
E	A V W	Port	180	2.5	2.5	Upwind	Yes
F	A W	Port		2.0	2.0	Upwind	Yes
FT	A W T W	Port		2.8	2.8	Upwind	No
G	P L	Starboard	Southwest	2.0	2.0	Reach	No
GT	P L T P	Starboard	225	4.0	4.0	Downwind	No
H	U L	Starboard		2.6	2.6	Reach	No
HT	U L T U	Starboard		5.2	5.2	Downwind	No
J	L V	Port	West	2.5	2.5	Upwind	Yes
K	L P	Port		2.0	2.0	Reach	No
KT	L P T L	Port		3.5	3.5	Downwind	No
L	L U	Port		2.7	2.7	Reach	No
LT	L U T L	Port		3.75	3.75	Downwind	No
M	J V	Port		4.0	4.0	Upwind	Yes
N	X B	Port	Northwest	2.5	2.5	Upwind	Yes
NT	X B T B	Port		3.5	3.5	Upwind	No
OT	X L B T B	Port		4.6	4.6	Upwind	No
P	Y B	Port		1.5	1.5	Upwind	Yes
R	W A	Starboard	North	2.0	2.0	Upwind	Yes
S	W V A	Starboard		2.3	2.3	Upwind	Yes
ST	W A T A	Port		3.4	3.4	Upwind	No
U	Y P	Port	Northeast	1.5	1.5	Upwind	Yes
UT	Y P T P	Port	45	3.0	3.0	Upwind	No
V	Y U	Port		2.5	2.5	Upwind	Yes
VT	Y U T U	Port		4.0	4.0	Upwind	No
W	Y L P	Port		2.25	2.25	Upwind	No
X	V L	Starboard	East	2.5	2.5	Upwind	Yes
XT	V X L T L	Port	90	4.0	4.0	Upwind	No
Z	V P L	Starboard		2.8	2.8	Upwind	Yes
ZJ	V J	Port		4.0	4.0	Upwind	No

For the designated "T" MARK as a rounding mark is left to Port or Starboard as indicated for the course. When used as a finish mark, finish between T and the nearby race committee boat from the direction of the last mark.

Note: When the course has been shortened (the RC displays flag S with two sounds), the finish shall be at a rounding mark, between that mark and a nearby race committee boat displaying flag S. Boats shall finish by crossing between the mark and flag from the course side (the direction of the last mark).

If the RC intends to shorten only specific classes, the class flags of those classes subject to the shortening shall be flown below flag S.