



BACARDÍ

DEC 1-2, 2018

INVITATIONAL WINTER SERIES

BACARDI INVITATIONAL WINTER SERIES REGATTA

Event #1

MIAMI, FLORIDA, U.S.A.

November 30 – December 2, 2018

SAILING INSTRUCTIONS

The organizing authority is Twelve USA, INC. The host club is Key Biscayne Yacht Club which will provide the regatta committee. The regatta venue is Shake A Leg Miami (SALM), 2620 South Bayshore Drive. The invited classes are J70 and Melges 24.

1. RULES

- 1.1 The regatta will be governed by the rules as defined in *The Racing Rules of Sailing* (RRS).
- 1.2 US Sailing prescriptions which shall be applicable are: rules 40, 60.3(b), 61.4, 67, 70.5(a), 76.1 and Appendices R and V1. No other prescriptions are applicable.
- 1.3 Except for the rules in RRS PARTS 2 and 3, the jury may impose alternate penalties less than DSQ for breaking a rule in accordance with RRS 64.1.
- 1.4 If there is a conflict between languages, the English text will take precedence.
- 1.5 All boats shall carry a functioning VHF radio for monitoring the race committee and emergencies. The KBYC VHF channel is **68**. This may be changed by radio notification and posting on the signal vessel.
- 1.6 The rules of the classes will be in effect except where changed in the notice of race and these sailing instructions.
- 1.7 If there is a conflict between the notice of race, the sailing instructions, and any other rules of the regatta, the sailing instructions will take precedence. This changes RRS 63.7.

2. NOTICES TO COMPETITORS

- 2.1 Notices to competitors will be posted on the official notice board in the first floor lobby at SALM.

3. CHANGES TO THE SAILING INSTRUCTIONS

- 3.1 Any change to the sailing instructions will be posted before 0900 on the day it will take effect, except that any change to the schedule of races will be posted by 2000 on the day before it will take effect.

4. SIGNALS MADE ASHORE

4.1 Signals made ashore will be displayed from the flag pole at SALM. When flag **AP** is displayed ashore, '1 minute' is replaced with 'not less than 60 minutes' in the race signal **AP**.

5. SCHEDULE OF EVENTS

Friday, November 30

1600-1900 Check-in (Registration), Ground Floor, SALM

1600-1900 Bacardi Happy Hour, SALM

Saturday, December 1

0800-0900 Late check-in, Ground Floor, SALM

0930 J70 and Melges 24 Competitor's Meeting, Ground Floor SALM

1055 First Warning Signal

1600-1900 Bacardi Happy Hour, SALM

1700 Competitor's Dinner, SALM

Sunday, December 2

1025 First Warning Signal

1300 NO Warning Signal Made After 1300

1600 -1800 Bacardi Happy Hour, SALM

1700 Prize Giving, SALM

6. CLASS FLAGS

6.1 Class flags will be the Melges 24 or J70 class insignia on a white background.

7. RACING AREA

7.1 The racing area will be on Biscayne Bay approximately 1- 4 nm southeast of Dinner Key Channel Marker Number "1". **ILLUSTRATION - RACING AREA** will be posted on the official notice board.

8. THE COURSES

8.1 No later than the warning signal for the class the race committee signal vessel will display the course designation, the approximate compass bearing and length of the leg to the first mark.

8.2 Courses will be windward/leeward with optional offsets and gates, **ADDENDUM - COURSES**.

9. MARKS

9.1 Windward mark 1 will be a white cylinder. An offset mark O will be an orange cylinder positioned at approximately ninety degrees to port of mark 1, marks to be left to port.

9.2 The leeward marks will be a gate consisting of yellow cylinders 2s and 2p. Boats shall sail between the gate marks from the previous mark and round either mark.

9.3 If a single mark is present at windward mark 1 or leeward mark 2, boats shall leave the mark to port.

10. THE START

10.1 Races will be started by using RRS 26 with the warning signal made 5 minutes before the starting signal. There will be a minimum interval of 5 minutes after a starting signal before the warning signal for the next class.

10.2 The starting line will be between a staff displaying an orange flag on the race committee signal vessel at the starboard-end and the course side of a port-end starting mark, or a staff displaying an orange flag on a port-end race committee vessel.

10.3 When applicable, flag **X** will be displayed for up to 5 minutes. This changes RRS 29.1. A boat that does not start within 5 minutes after her warning signal will be scored Did Not Start without a hearing. This change RRS A4 an A5.

10.4 If a boat is identified on the course side of the starting line at her starting signal the race committee will attempt to broadcast her bow number, or if identified by sail number by broadcasting the word "sail" followed by her number. Failure to make a broadcast or to time it accurately will not be grounds for a request for redress. This changes RRS 62.1(a).

11. CHANGE OF THE NEXT LEG OF THE COURSE

11.1 To change the next leg of the course, the race committee may deploy a new single mark, or move the finish line. The original marks will be removed as soon as practicable.

12. THE FINISH

12.1 The finishing line will be between a staff displaying a blue flag on a race committee vessel at the starboard-end and the course side of a port-end finishing mark, or a staff displaying a blue flag on a port-end race committee vessel.

13. TIME LIMITS

13.1 A race shall be abandoned in which no boat passes the windward marks within 30 minutes, or no boat finishes after sailing the course within 90 minutes after the start of her class. Boats not finishing within 15 minutes of the first boat in her class to sail the course and finish will be scored Did Not Finish without a hearing. This changes RRS 35, A4.1 and A4.2.

14. PENALTY SYSTEM

14.1 As addressed in sailing instructions 1.2 and 1.3.

15. SUPPORT PERSONS AND VESSELS

15.1 Support persons will register and provide their cell phone number and vessel name at the check-in desk in order to be eligible for entry to the regatta sites and to have access to applicable social events.

15.2 Support vessels shall remain well outside of the areas where boats are racing and race committee and jury vessels from the time of the preparatory signal for the first class to start until all boats have

finished, retired, or the race committee signals a postponement, general recall or abandonment, or to assist in an emergency.

1.3 Supporting vessels will monitor the race committee's assigned VHF frequency. The race committee or jury may warn by VHF a *Support Person's Vessel* who in their opinion is about to break a rule, before acting under RRS 3, 60.3(d) or 64.4.

16. PROTESTS AND REQUESTS FOR REDRESS

16.1 As soon as practicable after a boat's finish of the race boats intending to protest, request redress or retiring from the race will notify the race committee signal vessel of their intent by VHF or verbally, or if impracticable by notifying the race committee on the PRO's cell phone.

16.2 Notices of intent to protest, requests for redress, and actions of the race committee and jury will be posted on the official notice board prior to the protest time limit. The protest time limit is 90 minutes after the last boat to finish in their fleet, or **AP** over **A** is displayed on the water, or 60 minutes after **AP** over **A** is displayed ashore.

16.3 Protest forms will be available at the protest desk in the SALM lobby. Protests will be scheduled to be heard approximately in the order of submission of completed protest forms. The schedule of hearings will be posted on the board adjacent to the jury desk no later than 10 minutes after the protest time limit.

16.4 On the last scheduled day of racing a request for redress based on a jury decision or race committee action shall be delivered no later than 30 minutes after the decision or action is posted or the protest time limit, which is later. This changes RRS 62.2.

17. SCORING

17.1 Six races are scheduled. When five or more races have been completed, a boat's score will be the total of her race scores less her worst score. If less than five races have been completed, a boat's score will be the total of her race scores.

17.2 There will be Melges 24 and J70 Corinthian Divisions. To be eligible, at check-in the 'person in charge' (RRS 46) and all crew must sign an affidavit that they are currently certified as World Sailing Category 1. The Corinthian Divisions shall be scored as sub-divisions of the fleet using the competitor's actual scores.

18. BACARDI INVITATIONAL WINTER SERIES

18.1 See BACARDI INVITATIONAL WINTER SERIES REGATTA notice of race, **APPENDIX FOR SERIES SCORE**. To qualify for the series championship the helm person shall be in accordance with class rules for major championships. Crew members may be changed between regattas.

19. SAFETY REGULATIONS

19.1 Before her first start of the day, boats will check-in by hailing the race committee on the signal vessel's stern until acknowledged by the race committee. There will be no check-in during a starting sequence.

19.2 Boats are required to carry life-saving devices in accordance with government regulations while in the racing area, except foreign competitors are exempt regarding personal flotation devices (PFD) provided the vessel carries equally acceptable PFDs of the sponsoring foreign country for each foreign competitor on board. In addition to the PFDs, one readily accessible throwable PFD is required.

20. REPLACEMENT OF CREW OR EQUIPMENT

20.1 Substitution of crew or equipment during a regatta is not permitted without written approval of the regatta chairman or jury.

21. EQUIPMENT AND MEASUREMENT CHECKS

21.1 There will be NO crew weigh-in. The number of crew will be in compliance with class rules.

21.2 If requested by the jury, the person in charge shall promptly submit a valid measurement certificate. Boats may be subject to equipment inspection and measurement at any time, if ordered by the jury.

22. EVENT ADVERTISING

22.1 Boats will be requested to display the event sponsor's advertising on the hull in compliance with World Sailing REGULATION 20, ADVERTISING CODE. Materials will be supplied at check-in.

23. HAUL-OUT RESTRICTIONS

23.1 Boats will not be hauled-out during the regatta without the written permission of the regatta chairman or the jury.

24. BOW NUMBERS

24.1 J70 class boats will be provided with bow numbers following completion of check-in, with a document of the location where numbers are to be affixed.

24.2 Melges 24 class assigned bow numbers will be submitted at the check-in.

25. RADIO COMMUNICATIONS

25.1 Except in an emergency, a boat that is racing shall not make voice or data transmissions nor receive voice or data communications that is not available to all boats.

26. PRIZES

26.1 There will be first, second and third place Overall and Corinthian Divisions prizes for the J70 and Melges 24 classes. A boat is eligible to receive prizes for both fleet and Corinthian Divisions.

27. DISCLAIMER OF LIABILITY

27.1 In addition to RRS 4 Decision to Race, the safety of a boat and her entire management shall be the responsibility of the owner(s) and the owner's representative. Sailing is an activity that has an inherent risk of damage and injury. Competitors in this event are participating entirely at their own risk. The regatta organizers (organizing authority, race committee, protest committee, host club, sponsors, or any other participating organizing authority or official) will not be responsible for damage to any boat or

property or the injury to any competitor, including death, sustained as a result of participation in these events.

27.2 By participating in this events each competitor agrees to release the regatta organizers from any and all liability associated with participation in this event to the fullest extent permitted by law.

28. INSURANCE

28.1 Each participating boat shall be insured with valid third party insurance with a minimum cover of \$300,000 USD per incident or the equivalent.

29. INFORMATION

EVENT DIRECTOR:	SARA ZANOBINI	sara@bacardiinvitational.com
REGATTA CHAIRMAN:	MARK PINCUS	mwpincus@aol.com
PRINCIPAL RACE OFFICER:	ENRIQUE DILLON	305-815-8288
JURY CHAIRMAN	RICHARD MALLINSON	405-826-3990

2018-2019 BACARDI INVITATIONAL WINTER SERIES REGATTAS

Sailing Instruction 1.2: The US Sailing Prescriptions that will apply are: rules 40, 60. 3(b), 61.4, 67, 70.5(a), 76.1, and Appendices R and V1. These prescriptions will be posted on the official notice board. No other prescriptions are applicable.

Rule 40 - US Sailing prescribes that every boat shall carry life-saving equipment conforming to government regulations in the racing area.

The following applicable U.S. Coast Guard Regulations are abstracted as a guide for our competitors.

“At least one wearable PFD is on board for each person” (U.S.C.G. Type 1, 2 or 3). “Foreign boats temporarily using waters subject to U.S. jurisdiction....while practicing or racing in competition are exempted....provided the vessel carries one of the sponsoring foreign country’s acceptable flotation devices for each foreign competitor onboard”.

“One Type 4 throwable PFD is onboard in addition to the total number of wearable PFDs....IMMEDIATELY AVAILABLEsquare, ring buoys, or horseshoe buoys”.

Rule 60.3(b) - US Sailing prescribes that rule 60.3(b) is changed to: (b) request redress for a boat or call a hearing to consider redress; or...

Rule 61.4 - US Sailing prescribes that no fees shall be charged for protests or requests for redress.

Rule 67 - After rule 67 add; US Sailing prescribes that: (a) A boat that retires from a race or accepts a penalty does not, by that action alone, admit liability for damages. (b) A protest committee shall find facts and make decisions in compliance with the rules. No protest committee or US Sailing appeal authority shall adjudicate any claim for damages. Such a claim is subject to the jurisdiction of the courts. (c) A basic purpose of the rules is to prevent contact between boats. By participating in an event governed by the rules, a boat agrees that responsibility for damage arising from any breach of the rules shall be based on fault as determined by application of the rules, and that she shall not be governed by the legal doctrine ‘assumption of risk’ for monetary damages resulting from contact with other boats.

Rule 70.5(a) - After rule 70.5(a) add; US Sailing prescribes that its approval is required. Go to ussailing.org/documents and click the ‘No Appeal’ link for more information or to obtain approval.

Rule 76.1 - After rule 76.1 add; US Sailing prescribes that an organizing authority or race committee shall not eject or cancel the entry of a boat or exclude a competitor eligible under the notice of race and sailing instructions for an arbitrary or capricious reason or for race, color, religion, national origin, gender, sexual orientation or age.

APPENDIX R - PROCEDURES FOR APPEALS AND REQUESTS - See rules 70 and 71. This appendix replaces Appendix R as adopted by World Sailing for the purpose of creating a two-level appeals system. The US Sailing Appeals Committee acts as the national authority under rule 71. An association appeals committee may act as permitted by rule 71.2 and shall act as required by rule 71.3, subject to further appeal as provided in rule 7.1(a).

APPENDIX V1 - PENALTY AT THE TIME OF AN INCIDENT - The first two sentences of rule 44.1 are changed to: 'A boat may take a One-Turn Penalty when she may have broken one or more rules of Part 2 or rule 31 in an incident while racing. However, when she may have broken one or more rules of Part 2 while in the zone around a mark other than a starting mark, her penalty shall be a Two-Turns Penalty.'

BACARDI ADDENDUM

COURSES

EXAMPLE: COURSE BOARD DISPLAYED ON R/C SIGNAL VESSEL

Course #4 - Windward, Leeward, Windward, Leeward (finish)

1 + o (90 degree offset) at the weather mark, and leeward Gate.

Weather mark(s) approx. 120° magnetic at 1.2 nm from the start.

4
120°
1.2 nm

COURSE # 3

Finish ----- R/C

Leg 1 – Windward (1 + o to port)
Leg 2 – Leeward (gate)
Leg 3 – Windward (Finish)

'2s' '2p'
Start ----- R/C

COURSE # 5

Finish ----- R/C

Leg 1 – Windward (1 + o to port)
Leg 2 – Leeward (gate)
Leg 1 – Windward (1 + o to port)
Leg 4 – Leeward (gate)
Leg 5 – Windward (Finish)

'2s' '2p'
Start ----- R/C

COURSE # 4

Leg 1 – Windward (1 + o to port)
Leg 2 – Leeward (gate)
Leg 1 – Windward (1 + o to port)
Leg 4 – Leeward (Finish)

'2s' '2p

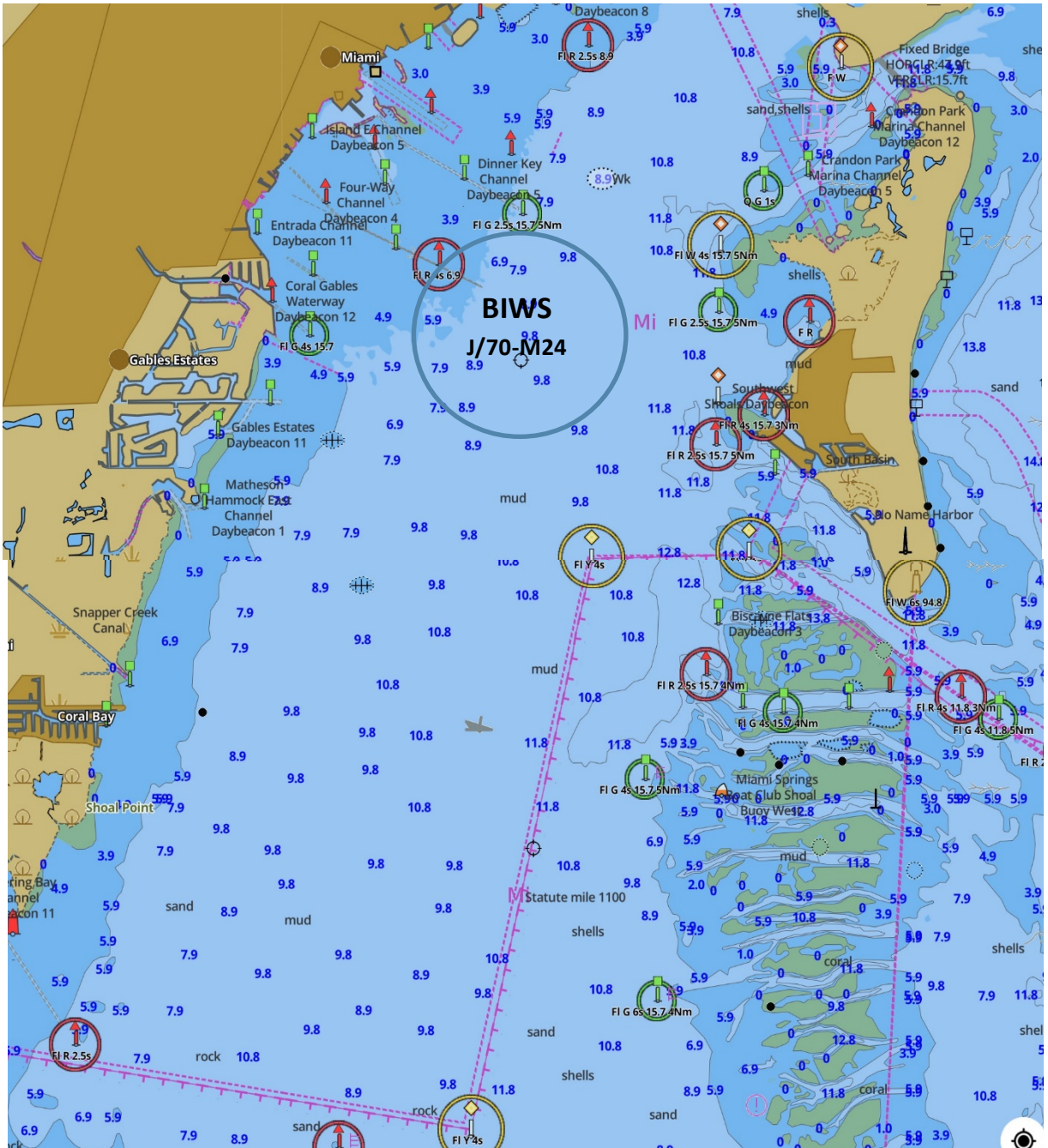
Start ----- R/C ----- Finish

COURSE # 2

Leg 1 – Windward (1 + o to port)
Leg 2 – Leeward (Finish)

Start ----- R/C ----- Finish

2018 BACARDI INVITATIONAL WINTER SERIES 1 Race Circle



Circle	Fleets	Diameter	Center	VHF
Bravo	J70 – Melges 24	1.5 nm	25 41.90 80 12.52	68