

MELGES 32 WORLD CHAMPIONSHIP 2013

NOTICE OF RACE



MELGES³²

2013 WORLD CHAMPIONSHIP

PORTO ROTONDO • ITALY • 18-22 SEPTEMBER

MELGES32WORLDCHAMPIONSHIP.COM



MELGES³²

On behalf of the International Melges 32 Class Association it is with great pleasure and excitement that I invite you to Porto Rotondo, Italy for the fifth Melges 32 World Championship, presented in partnership some of Europe's finest sailing organizations — B-Plan Sports and Events (BPSE), Yacht Club Porto Rotondo (YCPR) and Yacht Club Costa Smeralda (YCCS). Each partner has a specific role to play during the event.

BPSE will coordinate the regatta using their expertise in sports marketing, conception, organization, management, and communication of international regattas, including this year's very successful Melges 32 Audi Series.

YCPR is internationally recognized as one of the top yacht clubs with a history of fantastic race organization and a venue for sailing unmatched in all the world.

YCCS has been a long time partner of the International Melges 32 class. It will support this year's event with race management and has offered the opportunity to visit their Club during the event for an elegant evening party.

The International Melges 32 Class is indeed very fortunate to have such great partners. Our members should be very proud to be part of this Melges 32 experience. Together we are a family of sailors who have a true passion for the sport.

I wish to each competitor and everyone attending the event best wishes. We hope to all enjoy a fun, fair and safe regatta. 5..4..3..2..1..START!



Hank Stuart
International Melges 32 Class President



HANK STUART
International Melges 32 Class President



YACHT CLUB PORTO ROTONDO



YACHT CLUB COSTA SMERALDA





**YACHT CLUB PORTO ROTONDO**

Our Yacht Club is happy to welcome the great family of the Melges 32 in Porto Rotondo.

It will be a great pleasure to have the teams in our village, to give them a hospitable stay and an efficient organization at sea.

Our bay is well known for the beautiful natural scenery and the emerald waters, but it is also famous to be a perfect place to enjoy highly technical and entertaining races.

Porto Rotondo is not only sea and sailing, and in moments of relax you can visit the many beautiful art works made by the Masters Mario Ceroli, Andrea Cascella, Emmanuel Chapelain, such as the Church of San Lorenzo, the Theatre, the central Piazza San Marco and the mosaic called "Food Chain", that runs along Via del Molo.

We look forward to seeing you at the Yacht Club Porto Rotondo for an unforgettable event.

Luigi Doná dalle Rose

President

Yacht Club Porto Rotondo

**LUIGI DONÁ DALLE ROSE***President*



1. ORGANIZING AUTHORITY

The Organizing Authority (OA) is the International Melges 32 Class Association (IM32CA), the Yacht Club Porto Rotondo (YCPR), in conjunction with Yacht Club Costa Smeralda (YCCS) and B.Plan Sport and Events (BPSE).

2. HEADQUARTERS

- 2.1 The 2013 Melges 32 World Championship headquarters will be located at the Yacht Club Porto Rotondo - Molo di Levante 07020 Porto Rotondo.
- 2.2 The club's web site is www.ycpr.it.

3. RULES

- 3.1 The regatta will be governed by the rules as defined in *The Racing Rules of Sailing (RRS)*.
- 3.2 *The Equipment Rules of Sailing (ERS)* will apply.
- 3.3 The International Melges 32 Class Rules (IM32CR), including Section H (EVENT RULES), will apply except as specifically changed in the Notice of Race (NOR) or in the Sailing Instructions (SIs).
- 3.3.1 IM32 Class Rule C.1.1 (b) is changed as follows:
(b) RRS 49 is changed to read:
49 CREW POSITION
49.1 Competitors shall use no device designed to position their bodies outboard, other than hiking straps, stiffeners worn under the thighs and the lower lifeline as described in rule 49.2.
49.2 Lifelines shall meet the tautness requirements in the Class Rules. Competitors shall not position any part of their torsos outside the lifelines, except briefly to perform a necessary task. However, a competitor sitting on the deck facing outboard with his waist inside the lower lifeline may have the upper part of his body outside the upper lifeline.
- 3.3.2 Class Rule C.6.1 (q) will apply and reads as follows:
(q) When pushing down hard on the lower lifelines the lifeline shall when measuring from the deck to the top of any padding on the lifeline not measure less than 100mm in the lowest position between the after most stanchion and the middle stanchion. Shock cord may be added to the lower lifeline to pull the lifeline tight when no pressure is applied. The aft lower spectra section must be taut. The upper lifeline shall not deflect more than 50mm in any one spot when pushing down hard on the lifeline at the midpoint between any two stanchions.
- 3.3.3 RRS 42.3 (c) is changed to allow the spinnaker sheet to be trimmed without restriction.
- 3.4 On the water umpiring may be used and will be fully described in the SIs.
- 3.5 The international jury may impose suitable penalties, other than disqualification, for violations of the Class Rules, or other non-Part 2 rules. This changes RRS 64.1(a).
- 3.6 IM32CR H.3 (SAIL LIMITATION MARKS) will apply.
- 3.7 In accordance with IM32CR H.8 (COMPETITOR CONDUCT),

all owners are responsible for their crew's conduct and shall at all times exemplify the MELGES 32 CLASS MISSION STATEMENT and CODE OF CONDUCT. Failure to do so is grounds for disqualification.

- 3.8 In accordance with IM32CR H.4.3 (WIND LIMITS), races will not be started when the race committee deems that winds are consistently at or above 25 knots or gusting to 28 knots and above. If a race has been started and the wind increases to 25 knots and above, it remains at the discretion of the race committee whether or not to abandon the race. Races will not be started unless winds are consistently above 5 knots at the time of the start.

4. ADVERTISING

- 4.1 IM32CR C.4, (ADVERTISING), will apply.
- 4.2 Boats may be required to display advertising chosen and supplied by the organizing authority. If provided, flags and/or decals shall be displayed beginning Saturday, 14 September through Sunday, 22 September 2013.

5. ELIGIBILITY AND ENTRY

- 5.1 The event is open to all boats of the International Melges 32 Class that meet the requirements of the IM32CR.
- 5.2 IM32CR H.7 (CREW LISTS) will apply. No later than Friday, 23 August 2013, each entry is required to submit an online Crew Declaration (IM32CR Appendix 1) to the IM32CA Administrator. The form shall include ISAF ID numbers, Group Classifications and expiration dates for each participating crew member, as well all approved helmsmen. Boats will not be eligible for racing until all classifications have been checked.
- 5.3 All Melges 32s competing shall race with International Melges 32 Class Association Bow Numbers affixed as instructed in IM32CA Bow Number Policies and Procedures.
- 5.4 Each entry shall submit a completed Entry Form by registering online via the link at the event website www.melges32.com and pay the entry fee no later than Friday, 23 August 2013. Entries received after that date will be accepted only with the prior approval of the Organizing Authority and shall be assessed a late fee in accordance with NOR 8.2. No entries will be accepted after Monday, 8 September 2013. Original signatures shall be provided at registration.
- 5.5 Each entry shall provide the IM32CA Administrator with a completed Sail Declaration (IM32CR Appendix 2) and Owner Compliance Declaration Form (IM32CR Appendix 5) before the close of registration on Tuesday, 17 September 2013.

6. CLASSIFICATION

- 6.1 The ISAF Sailor Classification Code 22 will apply. Details of the ISAF Classification Code and information on how to apply can be found on ISAF's website at www.sailing.org/classification.

INCLUDES NOR AMENDMENT NO. 1

- 6.2 All submitted Crew Declarations will be posted online at www.melges32.com.
- 6.3 Classification protests may be submitted to the IM32CA beginning, Monday, September 09, 2013. The Classification Protest Time Limit under ISAF Regulation 22.1 is 1800 hours on Sunday, 15 September.
- 6.4 A representative of the ISAF Sailor Classification Commission may be present during registration and may carry out spot checks.

7. REGISTRATION

- 7.1 To complete registration, all entrants shall complete registration online, have submitted all required class forms, paid all entry fees and submitted a completed Entry Form and Signed Release Agreement with original signatures.
- 7.2 Only boats that have completed registration by 1700 hours on Tuesday, 17 September 2013, will be eligible to race. Late registration may be allowed only with the prior approval of the OA.

8. FEES

- 8.1 The entry fee is 1,200 EUROS and includes launch, haul and dockage from 10-23 September 2013, as well as tickets for up to eight (8) crew members to all social events. Social events include opening ceremony, party at YCCS (Porto Cervo), Championship dinner at YCPR, after race social on Championship race days and closing ceremony. Additional tickets to social events may be purchased for your guests on site at YCPR.
- 8.2 Any entry received after 23 August 2013, will be assessed a late fee of 200 EUROS.
- 8.3 Teams are responsible for any costs associated with berthing, launching and hauling, trailer storage, and car parking other than that described in NOR 8.1.

9. SCHEDULE

- 9.1 **Tuesday, 10 September**
Measurement Checks0800-1800
- Wednesday, 11 September**
Measurement Checks0800-1800
- Thursday, 12 September**
Registration/Check-in, Crew Weigh-in.....1400-1800
Measurement Checks0800-1800
- Friday, 13 September**
Registration/Check-in, Crew Weigh-in.....0900-1800
Measurement Checks0800-1800
- Saturday, 14 September**
Registration/Check-in, Crew Weigh-in.....0900-1100
.....1600-1800
Measurement Checks0800-1800
Practice Racing/First Warning Signal.....1300
(Limited RC on the water)

Sunday, 15 September

- Registration/Check-in, Crew Weigh-in.....0900-1100
.....1600-1800
- Measurement Checks0800-1800
- Practice Racing/First Warning Signal.....1100
- Classification Protest Time Limit1800

Monday, 16 September

- Registration/Check-in, Crew Weigh-in.....0900-1700
- Measurement Checks0800-1800
- Practice Racing/First Warning Signal.....1100
- Robertissima Party (Porto Rotondo).....2000**

Worlds

Tuesday, 17 September

- Registration/Check-in, Crew Weigh-in.....0900-1700
- Measurement Checks0800-1700
- Lay Day (no RC on the water)
- Melges 32 Annual Meeting at YCPR1100
- All boats afloat.....1630
- Competitors Meeting at YCPR.....1800
- Opening Ceremony/Reception at YCPR1830-2000

Wednesday, 18 September

- Substitute Crew Weigh-in0800-0830
- First Warning Signal (Championship)1100
- YCCS Dinner (Porto Cervo).....2000**

Thursday, 19 September

- Substitute Crew Weigh-in0800-0830
- First Warning Signal (Championship)1100
- Daily Awards/Social HourAfter Racing

Friday, 20 September

- Substitute Crew Weigh-in0800-0830
- First Warning Signal (Championship)1100
- Daily Awards/Social HourAfter Racing

Saturday, 21 September

- Substitute Crew Weigh-in0800-0830
- First Warning Signal (Championship)1100
- Championship Gala Dinner at (YCPR)2000

Sunday, 22 September

- Substitute Crew Weigh-in0800-0830
- First Warning Signal (Championship)1100
- No Warning Signal After.....1400
- Final Awards Ceremony/Party at YCPR1600

- 9.2 Up to ten (10) races are scheduled. The Race Committee (RC) may run fewer races at its discretion and may make up a race on any day, if needed. A maximum of three races may be run on any day.

10. MEASUREMENTS

- 10.1 Crews shall weigh-in during any of the times listed in NOR 9.1. There will be no further weight checks during the championship.
- 10.2 The OA and/or Class Association representative may weigh, measure, or inspect any boat and/or her equipment and sails before, during, or after the races.

- 10.3 There will be the following measurement checks:
- Sail Measurement
 - Lifeline
 - Random Measurement Checks
 - Corrector Weight
 - Safety Equipment
 - Mast Cylinder
- 10.4 In accordance with RRS G3, chartered or loaned boats may display national letters and sail numbers in contravention of class rules.

11. REPLACEMENT OF CREW

- 11.1 Crew substitutions before and during the event are permitted with the prior written approval of the IM32CA representative, who is a member of the OA.
- 11.2 A revised crew list shall be submitted to the IM32CA for approval prior to the race(s) to which it applies.
- 11.3 Crew substitutions may weigh-in during the designated Substitute Crew Weigh-in Period. Weigh-in shall be completed before 0830 on the first day that the substitute will compete.

12. SAILING INSTRUCTIONS

The sailing instructions (SIs) will be available no later than 1400 hours on Thursday, 12 September at registration and online at the regatta website.

13. VENUE | RACING AREA

- 13.1 The racing area will be the Golfo Di Cugnana, and Golfo di Congianus. (See Attachment A1)
- 13.2 Attachment A2 shows the location of the regatta harbor.

14. THE COURSES

The courses to be sailed will be a windward/leeward configuration as described in the SIs.

15. PENALTY SYSTEM

- 15.1 IM32CR H.4.1(a) will apply as modified:
The first two sentences of rule 44.1 are changed to read:
"A boat may take a One-Turn Penalty when she may have broken a rule of Part 2 or rule 31 while racing. However, when she may have broken a rule of Part 2 while in the zone around a mark other than a starting mark, her penalty shall be a Two-Turns Penalty."
- 15.2 Unless the course is shortened to finish at the windward mark, penalties while in the zone of the windward mark or on the offset leg may be delayed and taken as soon as possible on the downwind leg.
- 15.3 Decisions of the international jury will be final as provided in rule 70.5.

16. PROTESTS AND REQUESTS FOR REDRESS

- 16.1 IM32CR H.1 (PROTEST TIME LIMITS) will apply. The protest time limit will be described in the sailing instructions.
- 16.2 IM32CR H.4.1(b) will apply (this supersedes IM32CR H.2):
In the case of a protest, the representative from each yacht

that attends the protest in the protest room shall be the owner or the Group 1 driver. Group 3 sailors from the boat protesting or the boat being protested are not allowed in the protest room or to be in contact with the representative in the protest room. Group 3 sailors from other boats may be allowed in the protest room as a witness. This changes rule 63.3(a) and 63.6.

17. SCORING

- 17.1 IM32CR H.4 (SCORING) will apply:
- (a) Three races are required to be completed to constitute a series.
- (b) When fewer than six races have been completed, a boat's series score will be the total of her race scores.
- (c) When six or more races have been completed, a boat's series score will be the total of her race scores excluding her worst score.

18. COACH AND SUPPORT BOATS

- 18.1 IM32CR H.5 (OUTSIDE ASSISTANCE) will apply.
(See Attachment B)
- 18.2 Coach and support boats shall be registered with the OA during Check-in. Only support boats that have registered with the OA and carry identification provided by the OA will be allowed in the racing area.
- 18.3 Coach and support boats shall keep clear of the racing area at all times during racing. Any coach or support boat that interferes with the racing in any way, including creating excess wash or hindering an official boat carrying out its duties, shall cause their affiliated boat(s) to be liable for a penalty at the discretion of the international jury.

19. PRESS AND OFFICIAL SPECTATOR BOATS

- 19.1 All press and official spectator boats shall be registered with the OA during Check-in.
- 19.2 Press and spectator boats shall not interfere with the racing in any way and shall stay at a distance outside the race course where their wake causes no problem.
- 19.3 The OA may appoint one or more press and photo boat(s) that may be allowed within the race course. The position or effects of this boat(s) shall not be grounds for redress. This changes RRS 62.1.
- 19.4 Press and spectator boats may be required to display an identification flag, which shall be supplied by the OA.

20. LAUNCHING AND BERTHING

- 20.1 As part of the entry fee, each boat shall be provided with a dock at YCPR.
- 20.2 Each team is responsible for making its own arrangements for launching/hauling, trailer storage, work trailer storage, RIB/support boat and trailer storage and docking.
- 20.3 Information about other support facilities in the area will be posted on the regatta website.





21. HAUL-OUT RESTRICTIONS

- 21.1 All competing boats shall be afloat by 1630 on Tuesday, 17 September 2013.
- 21.2 Boats shall not be hauled out during the regatta except with and according to the terms of prior written permission of the race committee.

22. RADIO COMMUNICATIONS

- 22.1 The race committee will endeavor to hail each yacht that is OCS on VHF radio. The timing of such hail, the sequence of the hails, or the failure to make, or for the competitor to hear, such an announcement shall not be grounds for granting redress. This changes RRS 62.1(a).
- 22.2 A boat shall neither make radio transmissions while racing nor receive radio communications not available to all boats. This restriction also applies to mobile phones and any other electronic device.

23. PRIZES

- 23.1 IM32CR H.6 (PRIZES) will apply:
Trophies and Prizes will be awarded to:
- (a) The best boat that has an all Corinthian crew.
 - (b) The winning helmsman and each crew member for the top five boats overall.
 - (c) The winner of each race.
 - (d) Additional prizes may be awarded at the discretion of the RC and OA.

24. DISCLAIMER OF LIABILITY

- 24.1 Liability Waiver Form - As a condition of entry, each owner, skipper and individual participating crew member shall sign a liability waiver/media release. The fully executed Liability Waiver Form shall be submitted at registration prior to racing. The Liability Waiver Form will be posted on the regatta website and available at registration. By participating in this event, each competitor agrees to release the race organizers from any and all liability associated with such competitor's participation in this event to the fullest extent permitted by law.
- 24.2 Sailing is an activity that carries with it an inherent risk of damage and injury. Competitors participate in the regatta entirely at their own risk. See RRS 4, Decision to Race. The International Melges 32 Class Association, YCCS, YCPR, BPSE and any sponsors and affiliated companies, and each of their officers, directors, employees, sponsors and agents (collectively as "Releasees"), will not accept any liability for material damage or personal injury or death sustained in conjunction with or prior to, during, or after the regatta.

25. INSURANCE

Each participating boat shall be insured with valid third-party liability insurance with a minimum cover of 1,000,000 EUROS per event or the equivalent if expressed

in other currency. Proof of insurance shall be provided upon request.

26. CHANGES TO NOTICE OF RACE

The organization reserves the right to change this Notice of Race in accordance with rule 89.2 (a). Any change made to this Notice of Race will be published on the regatta website.

27. MEDIA RIGHTS

Each participant shall acknowledge that all media and commercial rights belong exclusively to the organizing authority and the IM32CA and shall grant to the OA and IM32CA the unrestricted right and permission to use and publish any biographical information, text and images arising from the Championship including name, voice, image, likeness, biographical material as well as representations of the boats in any media worldwide (being television, print and digital media), including video footage, for the sole purposes of advertising, promoting, reporting and disseminating information regarding the Audi Melges 32 World Championship and the participants in the regatta. The OA will exercise these rights in its sole discretion or as it may agree with the event sponsors. Participants shall not reproduce, publicly communicate or distribute images of the race in any way or form without previous authorization from the OA or the IM32CA.

RACE OFFICIALS

Jury Chairman: Willii Gohl (IJ-GER)
Race Committee PRO: Hank Stuart (IRO-USA)

FURTHER INFORMATION

Website: www.melges32.com
Blog: blog.melges32.com
Twitter: Melges32
Facebook: Melges 32

International Melges 32 Class Association

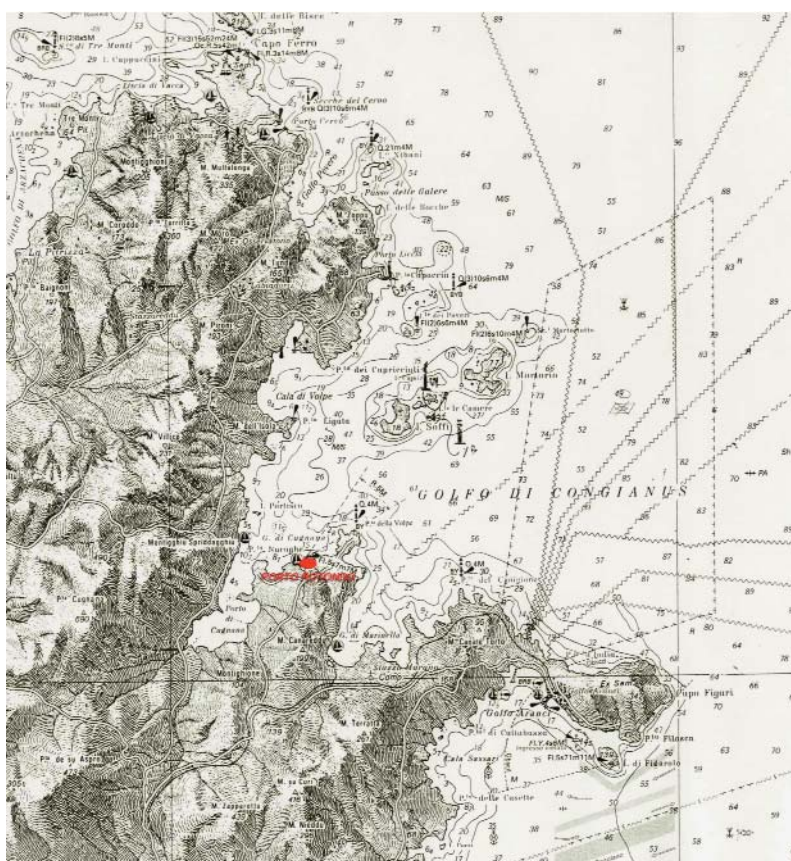
Joy Dunigan, International Class Administrator
World Championship Press Coordinator/Officer
E-mail: classadmin@melges32.com
T: +1 (912) 756-6706
F: +1 (912) 756-6728
M: +1 (912) 398-5776

Luisa Bambozzi, European Fleet Secretary

E-mail: eurofleet@melges32.com
T: +39 02 94435078

ATTACHMENT A2 YACHT CLUB LOCATION

Not to be used for navigation.



ATTACHMENT B

COACH AND SUPPORT BOATS

IM32CR H.5 OUTSIDE ASSISTANCE

A boat shall receive no outside assistance from: support boats, cell phone or radio communication, visual or vocal signaling, transfer of equipment or victuals or otherwise once she has left the dock for the day until she has finished the last race of the day, except in the case of emergency, or motor problems that cause the boat to not make her way to the starting area. If in the case of a motor problem, the boat shall make every attempt to fix the problem prior to the next day's racing and shall make the boat available for inspection by the jury, race committee or class representative.

When the RC displays AP over H afloat boats may disregard this rule until after the RC drops flag AP ashore or otherwise cancels racing for the day (e.g., AP over A, or N over A).

Individual coach or support boats shall not approach closer than 300 feet to any boat that is racing, except at mark roundings or the finish line where they shall not approach closer than 100 feet upwind of the windward mark or downwind of the leeward mark, and extensions of the finish line. At the warning signal for the start, individual coach or support boats shall leave the area being used by the racing boats and may station themselves outside of either the pin or committee signal boat, but no closer to either end than 100 feet.

Sailing Instructions for IM32CA regattas shall contain the following instruction: Video and photos taken from any support and/or coach boat, or spectator boat shall not be used as evidence at protest hearings. This alters RRS 63.6.

The penalty for infringing this rule shall be assessed at the discretion of the event international jury. This rule is not intended as a deterrent to social interaction before and between races.



SAIL DECLARATION FORM

SAIL	DESCRIPTION (YEAR/SAILMAKER)	BUTTON NO.	SAIL SERIAL NO.
Mainsail
Jib 1
Jib 2
Jib 3
Spinnaker	Asymmetrical
Spinnaker	Asymmetrical

I declare that only the above listed sails comply with the International Melges 32 Class Rules and carry the designated sail buttons required for competition. They will be used for the regatta series named below. This class sail declaration must be submitted to the International Melges 32 Class Association by registration at the start of any Melges 32 event.

Regatta Hull Number

Yacht Name Sail Number

Signed — Owner(s) Representative Date

Approved — Class Representative Date

INTERNATIONAL MELGES 32 CLASS ASSOCIATION

Class Administrator, Joy Dunigan
 Tel: +1 (912) 398-5776 • Fax: +1 (912) 756-6728
 classadmin@melges32.com

Tel: +39 02 94435078 • Fax: +39 02 94435079
 eurofleet@melges32.com
 Crew lists will be posted online at melges32.com



YACHT OWNER COMPLIANCE DECLARATION

The following hereby agree that they have fully read the Melges 32 Class Rules and that to the best of their knowledge their boat complies with these Class Rules for the ----- event. The undersigned also agree to abide by these Class Rules while racing.

Owner 1 -----
Signature -----

Owner 2 -----
Signature -----

Owner 3 -----
Signature -----

Tactician -----
Signature -----

Boat Captain -----
Signature -----

Boat Name -----
Date -----

Approved — Class Representative -----
Date -----

INTERNATIONAL MELGES 32 CLASS ASSOCIATION

Class Administrator, Joy Dunigan
Tel: +1 (912) 398-5776 • Fax: +1 (912) 756-6728
classadmin@melges32.com

Tel: +39 02 94435078 • Fax: +39 02 94435079
eurofleet@melges32.com
Crew lists will be posted online at melges32.com

DUE : 17 SEPTEMBER 2013



MELGES³²
2013 WORLD CHAMPIONSHIP
PORTO ROTONDO • ITALY • 18-22 SEPTEMBER



REGATTA DISCLAIMER

DISCLAIMER

Competitors agree to be bound by International Sailing Federations Racing Rules of Sailing (RRS), by the Sailing Instructions and the Notice of Race. Competitors agree to take any and all responsibility for the nautical qualities of their yacht, the rigging, the crew's ability, and the safety equipment. Competitors also agree to take any and all responsibility for damages caused to third persons or their belongings, to themselves or to their belongings, ashore and at sea as a consequence of their participation in the regatta, relieving of any responsibility the Organizing Authority and all person involved in the organization under whatever qualification and to accept full responsibility for the behavior and address of the yacht's crew, representatives and the guests.

Competitors are to be acquainted with ISAF Part1 Fundamental Rule 4: "The responsibility for a boat's decision to participate in a race or to continue racing is hers alone".

For acceptance of the Notice of Race rules and the regulations quoted in it:

NAME _____

SIGNATURE _____ **DATE** _____

PHOTOGRAPHS & RIGHTS

Competitors hereby grant to the Organizing Authority, the unrestricted right and permission to use the name and the text, photograph or video footage of either themselves or the yacht they are sailing during the event, to be published or broadcast in any media whatsoever (including but not limited to Press and TV advertisements or Internet), for either editorial or advertising purposes or to be used in press information, in the respect, competitor's name and biographical material may also be used or reproduced in any way known.

I HAVE CAREFULLY READ THIS AGREEMENT AND FULLY UNDERSTAND ITS COMMITMENTS, I AM AWARE THAT THIS IS A RELEASE OF LIABILITY AND WAIVER OF CLAIMS AND SIGN IT OF MY FREE WILL.

SIGNATURE _____ **DATE** _____

INSURANCE

I hereby declare that the boat holds adequate insurance for racing including third-party insurance of minimum coverage of 1,000,000 Euros. It is the owner representative's sole and inescapable responsibility to ensure that the insurance is in place and is adequate prior to participating at the event.

SIGNATURE _____ **DATE** _____

INTERNATIONAL MELGES 32 CLASS ASSOCIATION

Class Administrator, Joy Dunigan
Tel: +1 (912) 398-5776 • Fax: +1 (912) 756-6728
classadmin@melges32.com

Tel: +39 02 94435078 • Fax: +39 02 94435079
eurofleet@melges32.com
Crew lists will be posted online at melges32.com



© Borlenghi Studio | BR66



MELGES³²

2013 WORLD CHAMPIONSHIP

PORTO ROTONDO • ITALY • 18-22 SEPTEMBER

Molo di Levante - 07020 Porto Rotondo
Province of Olbia Tempio
Italy
Tel: +39 0789 34145
www.ycpr.it

International Melges 32 Class Association
melges32.com

MELGES

Performance Sailboats

N598 Zenda Road
Zenda, Wisconsin 53195 • USA
Tel: +1 (262) 275-1110 • Fax: +1 (262) 275-8012
melges.com

MELGES
EUROPE

Via Tucidide, 56 (Staz. 32)
20134 Milano • Italy
Tel: +39 02 94435078 • Fax: +39 02 94435079
melgeseurope.com