



**SEPTEMBER 10-22, 2013**  
**PORTO ROTONDO, SARDINIA, ITALY**

## **SAILING INSTRUCTIONS**

**(UPDATED 15 SEPTEMBER 2013)**

The Organizing Authority (OA) is the International Melges 32 Class Association (IM32CA), the Yacht Club Porto Rotondo (YCPR), in conjunction with Yacht Club Costa Smeralda (YCCS) and B.Plan Sport&Events (BPSE).

The official regatta website is [www.melges32.com](http://www.melges32.com)

### **1 RULES**

- 1.1 The regatta will be governed by the rules as defined in *The Racing Rules of Sailing* (RRS).
- 1.2 The *Equipment Rules of Sailing* (ERS) will apply.
- 1.3 The International Melges 32 Class Rules (IM32CR), including Section H (EVENT RULES), will apply except as specifically changed in the Notice of Race (NOR) or in these Sailing Instructions (SIs).

1.3.1 IM32 Class Rule C.1.1 (b) is changed as follows:

(b) RRS 49 is changed to read:

#### **49 CREW POSITION**

**49.1** Competitors shall use no device designed to position their bodies outboard, other than hiking straps, stiffeners worn under the thighs and the lower lifeline as described in rule 49.2.

**49.2** Lifelines shall meet the tautness requirements in the Class Rules.

Competitors shall not position any part of their torsos outside the lifelines, except briefly to perform a necessary task. However, a competitor sitting on the deck facing outboard with his waist inside the lower lifeline may have the upper part of his body outside the upper lifeline.

1.3.2 Class Rule C.6.1 (q) will apply and reads as follows:

(q) When pushing down hard on the lower lifelines the lifeline shall when measuring from the deck to the top of any padding on the lifeline not measure less than 100mm in the lowest position between the after most stanchion and the middle stanchion. Shock cord may be added to the lower lifeline to pull the lifeline tight when no pressure is applied. The aft lower spectra section must be taut. The upper lifeline shall not deflect more than 50mm in any one spot when pushing down hard on the lifeline at the midpoint between any two stanchions.

1.3.3 RRS 42.3(c) is changed to allow the spinnaker sheet to be trimmed without restriction.

1.4 Where there is a conflict between the NOR and the SIs, the SIs shall prevail. This changes RRS 63.7.

1.5 On the water umpiring will be used as described in SI 17.

1.6 The international jury may impose suitable penalties, other than disqualification, for violations of the Class Rules, or other non-Part 2 rules. This changes RRS 64.1(a).

1.7 Wind Limits – In accordance with IM32CR H.4.3(a), races will not be started when the race committee deems that winds are consistently at or above 25 knots or gusting to 28 knots and above. If a race has been started and the wind increases to 25 knots and above, it remains at the discretion of the race committee whether or not to abandon the race. Races will not be started unless winds are consistently above 5 knots at the time of the start.

1.8 If there is a conflict between languages the English text will take precedence.

## **2 NOTICES TO COMPETITORS**

2.1 Notices, including race results, amendments, end of protest time limit and protest hearing schedules, shall be posted on the official notice board located in the courtyard of the Yacht Club Porto Rotondo (YCPR). This information may also be posted on the event website and emailed to competitors.

2.2 Any questions regarding these sailing instructions shall be submitted in writing to the race committee PRO. The question(s) and any answers will be posted on the official notice board as soon as possible.

### 3 CHANGES TO SAILING INSTRUCTIONS

Any change to the sailing instructions will be posted before 0900 on the day it will take effect, except that any change to the schedule of races will be posted by 2000 on the day before it will take effect.

### 4 SIGNALS MADE ASHORE

4.1 Signals made ashore will be displayed from the western yardarm of the flagpole at Yacht Club Porto Rotondo (YCPR).

4.2 When flag AP is displayed ashore, “1 minute” is replaced with “not less than 60 minutes” in Race Signal AP. This changes RRS Race Signals.

4.3 When flag B (BRAVO) is displayed ashore with one sound signal, it indicates 60 minutes before the end of the protest time limit. When lowered with one sound means protest time has ended. This changes RRS race signals.

### 5 REGATTA SCHEDULE

5.1 Program and schedule of events:

<b>Day</b>	<b>Date</b>	<b>Event</b>	<b>Time</b>
Tues	10 Sept	Measurement Checks	0800-1800
Wed	11 Sept	Measurement Checks	0800-1800
Thurs	12 Sept	Registration/Check-in; Crew Weigh-in	1400-1800
		Measurement Checks	0800-1800
Fri	13 Sept	Registration/Check-in; Crew Weigh-in	0900-1800
		Measurement Checks	0800-1800
Sat	14 Sept	Registration/Check-in; Crew Weigh-in	0900-1100
		Measurement Checks	0800-1800
		Practice starts, First Warning Signal (limited RC on the water)	1300
		Registration; Crew Weigh-in	1600-1800

2013 MELGES 32 WORLD CHAMPIONSHIP SAILING INSTRUCTIONS

Sun	15 Sept	Registration/Check-in; Crew Weigh-in	0900-1100
		Measurement Checks	0800-1800
		Practice racing, First Warning Signal	1100
		Registration; Crew Weigh-in	1600-1800
		Classification Protest Time Limit	1800
Mon	16 Sept	Registration; Crew Weigh-in	0900-1700
		Measurement Checks	0800-1700
		Practice racing, First Warning Signal	1100
		ROBERTISSIMA PARTY	2000
Tues	17 Sept	Registration/Check-in; Crew Weigh-in	0900-1700
		Measurement Checks	0800-1700
		Lay Day (no RC on the water)	
		Melges 32 Class Annual Meeting @ YCPR	1100
		All boats afloat	1630
		Competitors Meeting at YCPR	1800
Wed	18 Sept	Opening Ceremony/Reception at YCPR	1830-2000
		Substitute Crew Weigh-in	0800-0830
		First Warning Signal (Championship)	1100
Thurs	19 Sept	Dinner at YCCS (Porto Cervo)	2000
		Substitute Crew Weigh-in	0800-0830
		First Warning Signal (Championship)	1100
Fri	20 Sept	Daily Awards/ Social hour	After racing
		Substitute Crew Weigh-in	0800-0830
		First Warning Signal (Championship)	1100
Sat	21 Sept	Daily Awards/ Social hour	After racing
		Substitute Crew Weigh-in	0800-0830
		First Warning Signal (Championship)	1100
		Championship Dinner at YCPR	1800

Sun	22 Sept	Substitute Crew Weigh-in	0800-0830
		First Warning Signal (Championship)	1100
		No warning signal after	1400
		Final Awards Ceremony/Party at YCPR	1600

5.2 Up to ten (10) races are scheduled. The race committee (RC) may run fewer races at its discretion and may make up a race on any day, if needed. A maximum of three races may be run on any day.

## 6 CLASS FLAGS

The Class flag will be the Melges 32 class insignia in blue on a white background. Numeral pennant #1 may be substituted for the Melges 32 class flag.

## 7 RACING AREAS

- 7.1 The racing area will be the Golfo Di Cugnana, and Golfo di Congianus.  
(See Attachment A1)
- 7.2 Attachment A2 shows the location of the regatta harbour.

## 8 THE COURSES

8.1 No later than the warning signal, the race committee signal boat will display the course, approximate compass bearing and distance of the first leg. Failure to broadcast or to receive this notification will not be grounds for a request for redress. This changes 60.1(b) and 62.1(a).

The course will be displayed vertically as follows:

Example:	<b>5</b>	<i>Course</i>
	<b>300</b>	<i>Approximate magnetic bearing to Mark 1</i>
	<b>1.5</b>	<i>Approximate distance to Mark 1. (nautical miles)</i>

8.2 Courses:

<b>3</b>	3 legs	Start-1-1a-Gate (2P/2S)-Finish (upwind)
<b>4</b>	4 legs	Start-1-1a-Gate (2P/2S)-1-1a-Finish (downwind)
<b>5</b>	5 legs	Start-1-1a-Gate (2P/2S)-1-1a-Gate (2P/2S)-Finish (upwind)
<b>6</b>	6 legs	Start-1-1a-Gate (2P/2S)-1-1a-Gate (2P/2S)-1-1a-Finish (downwind)
<b>7</b>	7 legs	Start-1-1a-Gate (2P/2S)-1-1a-Gate (2P/2S)-1-1a-Gate (2P/2S)-Finish (upwind)

8.3 Marks 1 and 1a shall be rounded to port. Mark 1a is an offset mark and will be positioned to port of Mark 1.

8.4 Gate Marks:

- (a) If only one leeward mark is set, boats shall round the single mark to port.
- (b) Except when there is a change of course, the gate will be positioned to windward of the RC Signal Boat.
- (c) The gate may be set after the starting signal.

8.5 Except when there is a change of course:

- (a) the finish for courses 4 and 6 will be to leeward of the gate
- (b) the finish for courses 3, 5 and 7 will be to windward of Mark 1.

## 9 MARKS

9.1 Description of the Marks:

	<b>Original Marks</b>	<b>New Marks per SI 12</b>
Mark 1	Red Inflatable	Yellow Inflatable
Mark 1A	Red Inflatable	Yellow Inflatable
GATE (2P/2S)	Red Inflatable	Yellow Inflatable
Start/finish	RC boats or RC boat and an inflatable mark	RC boats or RC boat and an inflatable mark

9.2 The starting and finishing marks will be race committee boats or a race committee boat and a nearby yellow inflatable tetrahedron mark.

## 10 AREAS THAT ARE OBSTRUCTIONS OR RESTRICTED

10.1 NONE

## 11 THE START

11.1 The RC signal boat will display code flag L (LIMA) with one sound as it departs the harbor.

11.2 The starting line will be between the staffs displaying an orange flag on the starboard end signal boat and the port-end starting mark boat. In the event that the port-end mark boat is not on station, it will be replaced by an inflatable mark.

- 11.3 Individual recalls and boats disqualified under RRS 30.3 will be broadcast on VHF channel 72 using bow/sail numbers. This is in addition to and changes RRS 29.1 and 30.3.
- 11.4 The RC will broadcast the bow/sail numbers of all boats observed to be OCS at the start twice; it will not alter the list based on a boat's actions subsequent to the start.
- 11.5 Failure of the RC to make a broadcast or to time it accurately will not be grounds for a request for redress. This changes RRS 60.1(b) and 62.1(a).
- 11.6 If the port end is a RC boat, individual and general recall flags will be displayed by both RC starting line boats
- 11.7 A boat starting later than 10 minutes after her starting signal will be scored Did Not Start without a hearing. This changes RRS 35, A4 and A5.

## **12 CHANGE OF THE NEXT LEG OF THE COURSE**

- 12.1 To change the next leg of the course, the race committee will lay a new mark (or move the finishing line) and remove the original mark as soon as practicable. When in a subsequent change a new mark is replaced, it will be replaced by an original mark.
- 12.2 Except at a gate, boats shall pass between the race committee boat signaling the change of the next leg and the nearby mark, leaving the mark to port and the race committee boat to starboard. This changes RRS 28.

## **13 THE FINISH**

- 13.1 For downwind finishes, the finishing line will be between a staff displaying an orange flag on the finishing line boat and a staff displaying an orange flag on a nearby race committee boat or an inflatable mark. The finishing line will be located to leeward of the leeward gate.
- 13.2 For windward finishes, the finishing line will be between a staff displaying an orange flag on the finishing line boat and a staff displaying an orange flag on a nearby race committee boat or an inflatable mark. The finishing line will be located to windward of the windward mark.
- 13.3 If the race committee intends to start another race on the same day, it will display the Second Substitute (with no sound) while boats are finishing.

## 14 PENALTY SYSTEM

14.1 IM32CR H.4.1 (a) is CHANGED to read:

**RRS 44.1 is changed to read:**

44.1 Taking a Penalty

- (a) A boat may take a Two-Turns Penalty when she may have broken a rule of Part 2 while racing within the zone of a mark.
- (b) A boat may take a One-Turn Penalty when she may have broken a rule of Part 2 while racing outside the zone of a mark or rule 31.
- (c) However, if a boat caused injury or serious damage or gained a significant advantage in the race or series by her breach her penalty shall be to retire.

**RRS 44.2 is changed to read:**

44.2 One-Turn and Two-Turns Penalties

After getting well clear of other boats as soon after the incident as possible, a boat takes a One-Turn or Two-Turns Penalty by promptly making the required number of turns in the same direction, each turn including one tack and one gybe. However, unless the course is shortened to finish at the windward mark, penalties within the zone of the windward mark or penalties on the offset leg may be delayed and taken as soon as possible on the downwind leg. When a boat takes the penalty at or near the finishing line, she shall sail completely to the course side of the line before finishing.

14.2 Decisions of the jury will be final as provided in RRS 70.5.

14.3 Appendix P will apply and is changed so rule P2.3 will not apply and rule P2.2 is changed so that it will apply to any penalty after the first one. P2.1 is changed to read: When a boat is first penalized under rule P1 her penalty shall be a One-Turn Penalty under rule 44.2. If she fails to take it she shall be disqualified without a hearing. This changes rule Appendix P.

14.4 **Penalty Declarations** – A boat that has taken a penalty turn(s) in accordance with SI 14.1 shall complete the Penalty Declaration form available at the jury desk before the end of the Protest Time Limit.

## 15 TIME LIMITS AND TARGET TIMES

15.1 The target time for races is 60 to 90 minutes. Failure to meet the target time will not be grounds for a request for redress. This changes RRS 60.1(b) and 62.1(a).

15.2 Boats still racing more than 30 minutes after the first boat to sail the course in accordance with RRS 28.2 finishes will be scored TLE (Time Limit Expired) without a hearing. A “TLE” score shall be two more points than the number of boats that have finished within the time limit. This changes RRS 35, 63.1, A4 and A5. The race



committee will lower the blue “on station” flag with a long sound when the finishing window is closed.

## **16 PROTESTS AND REQUESTS FOR REDRESS**

- 16.1 Protest forms are available at the YCPR. Protests and requests for redress or reopening shall be delivered there within the appropriate time limit.
- 16.2 Written protests and requests for redress or reopening shall be submitted to the jury secretary in the YCPR as soon as possible, but not later than one hour after flag B (BRAVO) is hoisted – SI 4.3. This will be hoisted as soon as practical as the boats return to the harbor at the discretion of the RC. The time limit for filing a protest will be posted on the official notice board at or before the hoisting of flag B.
- 16.3 Protest notices will be posted as soon as possible on the official notice board. Protest hearings will take place at the YCPR as soon as possible after the notices are posted. The jury will attempt to hear protests in the order of receipt. Representatives of yachts who are parties to a hearing shall remain on call in the vicinity of the protest rooms.
- 16.4 Notices of protests by the race committee or jury will be posted to inform boats under RRS 61.1(b).
- 16.5 Breaches of SI 10, 19, 22, 24, 25, 26, 27, 31, and 33 will not be grounds for a protest by a boat. This changes RRS 60.1(a). The jury may impose penalties for these breaches less than disqualification.
- 16.6 RRS 63.5 is changed by adding, “A protest involving contact may be heard by the jury even though the requirements of RRS 61.1(a) and 61.3 have not been fulfilled.”
- 16.7 On the last scheduled day of racing, a request for reopening a hearing shall be delivered:
- (a) Within the protest time limit if the requesting party was informed of the decision on the previous day;
  - (b) No later than 30 minutes after the requesting party was informed of the decision on that day.
  - (c) If no races are held on the last scheduled day of racing, within one hour after racing has been abandoned.
- This changes RRS 66.
- 16.8 On the last scheduled day of racing, a request for redress based on a jury decision shall be delivered no later than 30 minutes after the decision was posted. This changes RRS 62.2.

- 16.9 If the race committee posts a list of boats scored OCS, ZFP or BFD on the official notice board before the protest time limit, a request for redress based on such a posted score shall be made no later than one hour after the protest time limit. This changes RRS 62.2.
- 16.10 In the case of a protest, the representative from each yacht that attends the protest in the protest room shall be the owner or the Group 1 driver. Group 3 sailors from the boat protesting or the boat being protested are not allowed in the protest room or to be in contact with the representative in the protest room. Group 3 sailors from other boats may be allowed in the protest room as a witness.

## **17 ON THE WATER UMPIRING**

- 17.1 On the water umpiring will be used for rules of Part 2 and RRS 31.
- 17.2 The umpires, comprised of members of the jury, will blow a whistle when they have observed a breach of a rule of Part 2 resulting in a red flag protest, or a breach of RRS 31, and they expect one or more boats to take a penalty. In addition, they will attempt to indicate with hand signals which boat(s) they believe are involved in the incident. If the incident results in a protest hearing, the umpire(s) may provide testimony as a witness(es).
- 17.3 Actions or lack of actions, positioning on the course or any possible interference by on the water umpires shall not be grounds for a request for redress. This changes RRS 60.1(b) and 62.1.

## **18 SCORING**

Per IM32CR H.4 (Scoring), the Low Point Scoring System of RRS Appendix A2 will apply, changed as follows:

- (a) Three races are required to be completed to constitute a series.
- (b) When fewer than six races have been completed, a boat's series score will be the total of her race scores.
- (c) When six or more races have been completed, a boat's series score will be the total of her race scores excluding her worst score.

This changes RRS Appendix A2.

## **19 SAFETY REGULATIONS**

- 19.1 A boat that retires from a race, leaves or returns to the racing area between races shall notify the RC as soon as possible.

19.2 Before the warning signal of the first race each day, each boat shall sail on starboard tack past the stern of the race committee signal boat displaying flag L (LIMA) and hail her bow number until acknowledged by the race committee by repeating the boat's bow number.

**20 REPLACEMENT OF CREW OR EQUIPMENT**

20.1 Substitution of competitors will not be allowed without the prior written approval of the race committee and IM32CA Administrator Joy Dunigan for the race to which it applies.

20.2 Substitution of damaged or lost equipment will not be allowed unless authorized by the race committee. Requests for substitution shall be made to the race committee at the first reasonable opportunity.

**21 EQUIPMENT AND MEASUREMENT CHECKS**

A boat or equipment may be inspected at any time for compliance with the class rules and sailing instructions. On the water, a boat can be instructed by a race committee equipment inspector or the measurer to proceed immediately to a designated area for inspection.

**22 ADVERTISING, BOW NUMBERS, IDENTIFICATION/EVENT STICKERS**

22.1 Boats shall display bow numbers at all times while racing.

22.2 Event bow stickers will be provided by the OA and shall be attached to both sides of the boat's hull at all times while racing. The instructions as to position will be supplied by the OA at registration. It is the responsibility of the crew to ensure the numbers and stickers remain on the boat and obtain replacements as necessary.

22.3 Boats may be required to display advertising chosen and supplied by the organizing authority. If provided, flags and/or decals shall be displayed beginning Saturday, September 14 through Sunday, September 22, 2013.

**23 OFFICIAL BOATS**

23.1 Official boats will be marked as follows:

Official RC boats	Blue race committee flag
Jury boats	White flag with black "U1", "U2" or "U3"
Press boats	White flag with navy blue "PRESS"
Class Measurer	White flag with black "M"

- 23.2 All press and official spectator boats shall be registered with the OA during Check-in.
- 23.3 Press and spectator boats shall not interfere with the racing in any way and shall stay at a distance outside the race course where their wake causes no problem.
- 23.4 The OA may appoint one or more press and photo boat(s) that may be allowed within the race course. The position or effects of this boat(s) shall not be grounds for redress. This changes RRS 62.1.
- 23.5 Press and spectator boats may be required to display an identification flag, which shall be supplied by the OA.

## **24 SUPPORT BOATS**

- 24.1 ***IM32CR H.5 OUTSIDE ASSISTANCE will apply as modified, see*** attachment B.
- 24.2 Video and photos taken from any support and/or coach boat, or spectator boat shall not be used as evidence at protest hearings. This alters RRS 63.6.
- 24.3 The penalty for infringing this rule shall be assessed at the discretion of the jury. This rule is not intended as a deterrent to social interaction before and between races.
- 24.4 Only support boats that have registered with the OA and carry identification provided by the OA will be allowed in the racing area.

## **25 TRASH DISPOSAL**

- 25.1 A competitor shall not intentionally put trash in the water.
- 25.2 RRS 55 is deleted.

## **26 HAUL-OUT RESTRICTIONS**

- 26.1 All competing boats shall be afloat by 1630 on Tuesday, September 17, 2013.
- 26.2 Boats shall not be hauled out during the Championship except with and according to the terms of prior written permission of the race committee.

## **27 RADIO COMMUNICATIONS**

- 27.1 Except in an emergency, a boat shall neither make radio transmissions while racing nor receive radio communications not available to all boats. This restriction also applies to mobile telephones.
- 27.2 The race committee will use VHF radio to communicate to the fleet, including the location of the starting area, countdown to the start, OCS bow/sail numbers, General

Recalls, Abandonment and Postponements. The timing of such hail, the sequence of the hails, or the failure to make, or for the competitor to hear, such an announcement shall not be grounds for a request for redress. This changes RRS 60.1(b) and 62.1(a).

- 27.3 VHF channel 72 will be used to communicate with competitors.
- 27.4 Each competing boat shall carry a VHF marine radio capable of transmitting and receiving VHF channels 09, 16, 22A, 69, 71, 72 and 73.

## **28 PRIZES**

- 28.1 Overall trophies will be awarded to top five boats, as well as each crew member on the top three boats.
- 28.2 Daily Prizes will be awarded for the winner of each race will be presented.
- 28.3 Additional prizes may be awarded at the discretion of the RC and OA.

## **29 DISCLAIMER OF LIABILITY**

- 29.1 Liability Waiver Form - As a condition of entry, each owner, skipper and individual participating crew member shall sign a liability waiver/media release. The fully executed Liability Waiver Form shall be submitted online prior to racing. The Liability Waiver Form will be posted on the regatta website. By participating in this event, each competitor agrees to release the race organizers from any and all liability associated with such competitor's participation in this event to the fullest extent permitted by law.
- 29.2 Competitors participate in this regatta entirely at their own risk. See RRS 4, Decision to Race, as well as the "Waiver and Release of Liability" as stated on the entry form. The Organizing Authority, The Yacht Club Porto Rotondo, The Yacht Club Costa Smeralda, BPSE, International Melges 32 Class Association, sponsors and affiliated companies, will not accept any liability for material damage or personal injury or death sustained in conjunction with or prior to, during, or after the regatta. The safety of a boat and her crew is the sole and inescapable responsibility of the person in charge.

## **30 INSURANCE**

Each participating boat shall be insured with valid third-party liability insurance with a minimum cover of 1,000,000.00 EUROS per event or the equivalent if expressed in other currency. Proof of insurance shall be provided upon request.

### **31 CAMERAS & ELECTRONIC EQUIPMENT**

Boats may be required to carry cameras, sound equipment or positioning equipment as provided and specified by the OA.

### **32 MEDIA RIGHTS**

Each participant shall acknowledge that all media and commercial rights belong exclusively to the OA and the IM32CA and shall grant to the OA and IM32CA the unrestricted right and permission to use and publish any biographical information, text and images arising from the Championship including name, voice, image, likeness, biographical material as well as representations of the boats in any media worldwide (being television, print and digital media), including video footage, for the sole purposes of advertising, promoting, reporting and disseminating information regarding the Melges 32 World Championship and the participants in the regatta. The OA will exercise these rights in its sole discretion or as it may agree with the event sponsors. Unless previously authorized by the OA or IM32CA, participants shall not reproduce, publicly communicate or distribute images of the race in any way or form.

### **33 LAUNCHING AND BERTHING**

- 33.1 Each team is responsible for making its own arrangements for launching/hauling, trailer storage, work trailer storage, RIB/support boat and trailer storage and docking.
- 33.2 The OA has made arrangements with YCPR, which is offering special packages for Melges 32 Worlds participants covering dockage, hoist use, trailer storage, work trailer storage, RIB storage and docking, power and water during the Worlds, as well as extended packages covering all or parts of the summer. Details will be posted on the regatta website and all arrangements shall be made directly with YCPR.
- 33.3 Information about other support facilities in the area will be posted on the regatta website.

### **34 COMPETITOR CONDUCT**

All owners are responsible for their crew's conduct and shall at all times exemplify the MELGES 32 CLASS MISSION STATEMENT and CODE OF CONDUCT. Failure to do so is grounds for disqualification.

### **35 RACE OFFICIALS**

**Jury Chairman: Willii Gohl (IJ-GER)**

**Jury:** **Ziblat Zvi (IJ-ISR)**  
**Luiso Ferrandiz Ruiz (IJ-ESP)**  
**Bernardo Camboni (IJ-ITA)**  
**Anna Maria Bonomo (NJ-ITA)**

**Race Committee PRO:** **Hank Stuart (IRO-USA)**  
[hstuart8m@gmail.com](mailto:hstuart8m@gmail.com)  
P (Mobile): +1 585 414 6105

**International Measurer:** **Egidio Babbi (IM-ITA)**  
P (Mobile): +39.335.6246715

**Chief Equipment Inspector:** **Francesco Morassutti**

## 36 FURTHER INFORMATION

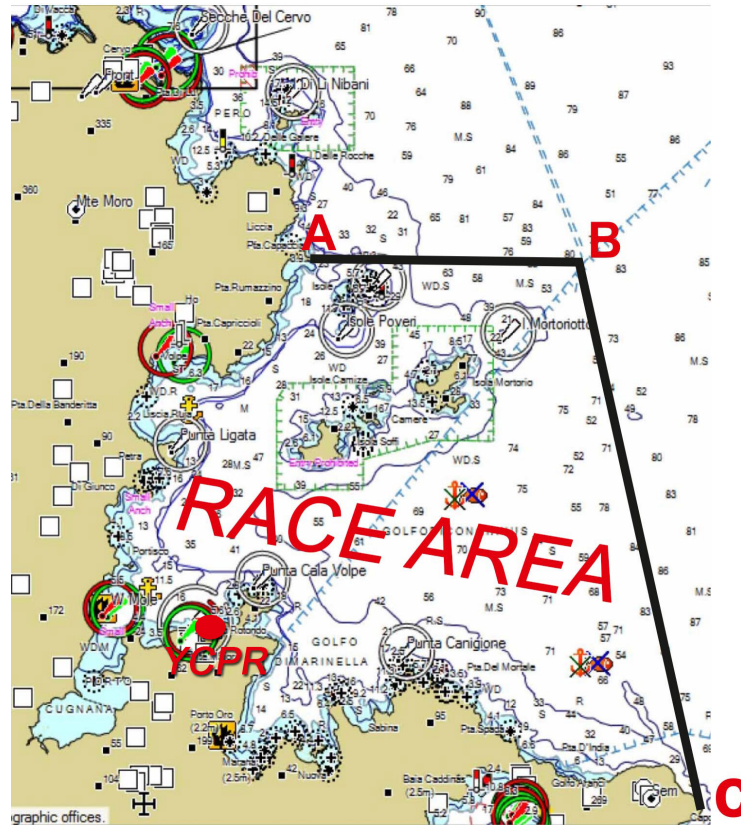
**International Melges 32 Class Association**  
[www.melges32.com](http://www.melges32.com) // Blog: [blog.melges32.com](http://blog.melges32.com)  
Twitter: Melges32 // Facebook: Melges 32

Joy Dunigan, International Class Administrator  
E-mail: [classadmin@melges32.com](mailto:classadmin@melges32.com)  
P (Mobile): +1 912 398 5776

# ATTACHMENT A1

## RACING AREA

Not to be used for navigation.

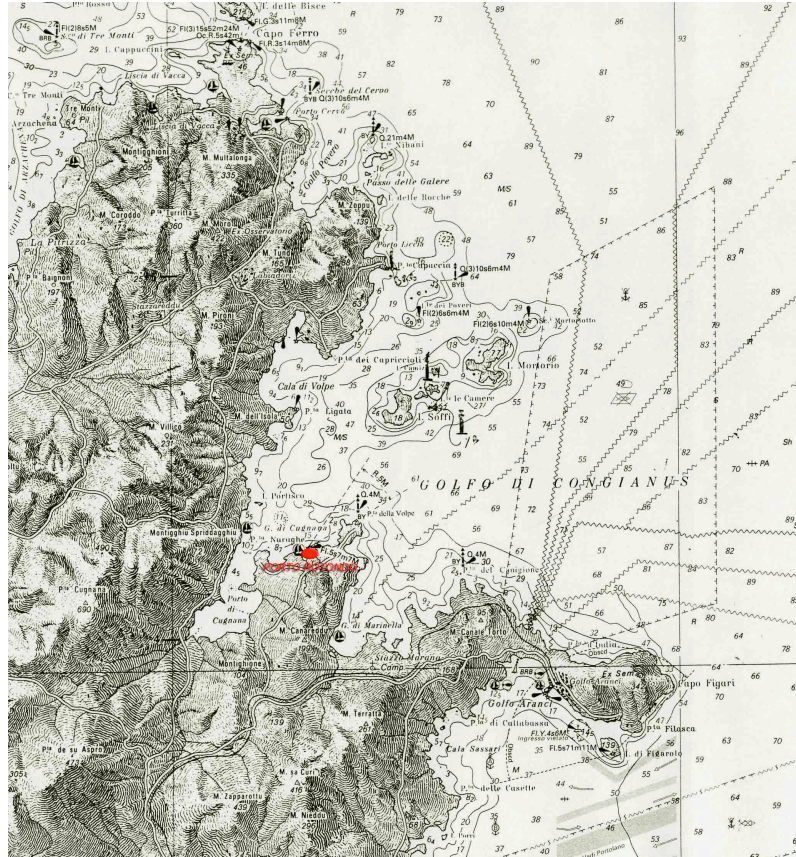




# ATTACHMENT A2

## YACHT CLUB LOCATION

Not to be used for navigation.



## **ATTACHMENT B**

### **COACH AND SUPPORT BOATS**

#### **IM32CR H.5 OUTSIDE ASSISTANCE**

A boat shall receive no outside assistance from: support boats, cell phone or radio communication, visual or vocal signaling, transfer of equipment or victuals or otherwise once she has left the dock for the day until she has finished the last race of the day, except in the case of emergency, or motor problems that cause the boat to not make her way to the starting area. If in the case of a motor problem, the boat shall make every attempt to fix the problem prior to the next day's racing and shall make the boat available for inspection by the jury, race committee or class representative.

When the RC displays AP over H afloat boats may disregard this rule until after the RC drops flag AP ashore or otherwise cancels racing for the day (e.g., AP over A, or N over A).

Individual coach or support boats shall not approach closer than 300 feet to any boat that is racing, except at mark roundings or the finish line where they shall not approach closer than 100 feet upwind of the windward mark or downwind of the leeward mark, and extensions of the finish line. At the warning signal for the start, individual coach or support boats shall leave the area being used by the racing boats and may station themselves outside of either the pin or committee signal boat, but no closer to either end than 100 feet.

Sailing Instructions for IM32CA regattas shall contain the following instruction: Video and photos taken from any support and/or coach boat, or spectator boat shall not be used as evidence at protest hearings. This alters RRS 63.6.

The penalty for infringing this rule shall be assessed at the discretion of the event international jury. This rule is not intended as a deterrent to social interaction before and between races.