

# AUDI MELGES 20 WORLD CHAMPIONSHIP 2013

NOTICE OF RACE



[AUDIMELGES20WORLDS.COM](http://AUDIMELGES20WORLDS.COM)



Audi

**MELGES<sup>20</sup>**

WORLD  
CHAMPIONSHIP

★ 2013 ★



Audi

**MELGES<sup>20</sup>**

WORLD  
CHAMPIONSHIP

★ 2013 ★

On behalf of the International Audi Melges 20 Class Association it is with great pleasure that I invite you to Ocean Reef Club for the very first Audi Melges 20 World Championship. It is one of the most exciting racing venues in the world and well known for its warm hospitality and sheer elegance. With this in mind, the Audi Melges 20 Class is honored to hold its first World Championship in Key Largo.

In addition to exquisite surroundings, beautiful waters and premium yachting conditions, the International Audi Melges 20 Class in conjunction with the 2013 Ocean Reef Organizing Committee, Melges USA and Coconut Grove Sailing Club, world class regatta management, on and off the water is a guarantee.

The Class is extremely fortunate to have additional generous support from Melges Europe and Melges Asia Pacific.

We very much encourage each and every Audi Melges 20 team worldwide to compete and enjoy all that high performance one design racing has to offer at the 2013 Audi Melges 20 World Championship in Ocean Reef.

**Manfredi Vianini Tolomei**

International Audi Melges 20 Class President

**melges20.com**



**MANFREDI VIANINI TOLOMEI**

*International Audi Melges 20 Class President*





Audi

**MELGES<sup>20</sup>**

WORLD  
CHAMPIONSHIP

★ 2013 ★

I invite you join us at Ocean Reef Club this winter to discover the many delights of our private community, described in the *Robb Report* as one of the most exclusive in the United States.

Secluded at the north end of Key Largo, Ocean Reef is a refuge from the clamor and demands of the world beyond our boundaries, the place where we come whenever we can to relax and be ourselves. Many renowned statesmen and celebrities have visited Ocean Reef, each of them pleased to discover the respect for privacy we all enjoy here.

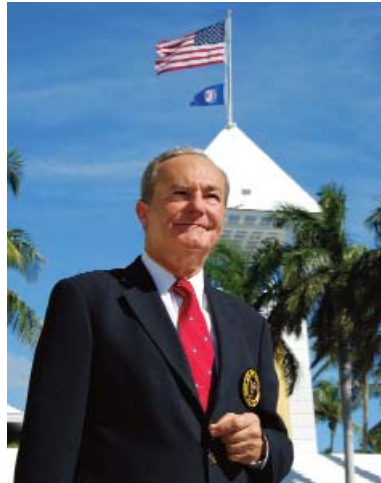
I encourage you to visit our website at [oceanreef.com](http://oceanreef.com) where you'll find a wealth of information about our amenities and facilities but you'll have to come for a visit to experience the glory of the sunrise, the magic of the azure sea, the warmth of our members' smiles. Ocean Reef is different from all other places – a difference that we cherish, that we all strive to preserve.

Through special Club-sponsored visitations, discerning families may experience Ocean Reef Club for themselves. It is your opportunity not only to discover all that the Club offers, but also to enjoy an exceptional respite in the Florida Keys.

If, after you have perused the information on our website, you would like to inquire about the availability of the villas, condominiums and residences in the Club's rental program, please call the Club at 800.741.7333.

Cordially,

**Paul M. G. Astbury**  
President



**PAUL M. G. ASTBURY**  
President



**OCEAN REEF CLUB®**  
A UNIQUE WAY OF LIFE  
KEY LARGO, FLORIDA

Photo by Andre Van Rensburg

NOTICE OF RACE





Audi

**MELGES<sup>20</sup>**

WORLD  
CHAMPIONSHIP

★ 2013 ★

## 1. RULES

- 1.1 The regatta will be governed by the rules as defined in *The Racing Rules of Sailing (RRS)*.
- 1.2 The International Audi Melges 20 Class Rules (IAM20CR), including Part 3, Section I (EVENT RULES), will apply except as specifically changed in the Notice of Race (NOR) or in the Sailing Instructions (SIs).
- 1.3 *The Equipment Rules of Sailing (ERS)* will apply.
- 1.4 The US Sailing prescriptions to rules 40, 67, 76.1 and added rules 61.4, and 82 will apply and are stated in Attachment B.
- 1.5 RRS 50.4 will not apply.
- 1.6 For the purposes of RRS 43.2 the anti hiking strap does not constitute a lifeline.
- 1.7 RRS 42.3(c) is modified to allow the gennaker sheet to be pumped without restriction to promote surfing or planing.
- 1.8 If there is a conflict between languages the English text will take precedence.
- 1.9 In accordance with rule G3, a boat chartered or loaned for this event may carry national letters or a sail number in contravention of the Class Rules.
- 1.10 IAM20CR I.2 (SAIL LIMITATION MARKS) will apply.
- 1.11 In accordance with IAM20CR I.3.3. *Wind Speeds (a)* Races will not be started when the race committee deems that winds are consistently at or above 23 knots or gusting to 25 knots and above. If a race has been started and the wind increases to 23 knots and above, it remains at the discretion of the race committee whether or not to abandon the race. Races will not be started unless winds are consistently above 4 knots at the time of the start.

## 2. ADVERTISING

- 2.1 Competitor advertising shall conform to the current ISAF Regulation 20 and the Class Rules.
- 2.2 Boats may be required to display identification numbers and sponsors advertising for the duration of the event in accordance with ISAF Regulation 20.4. These items will be supplied free of charge by the organizing authority (OA) at registration.

## 3. ELIGIBILITY AND ENTRY

- 3.1 The regatta is open to all boats of the International Audi Melges 20 class.
- 3.2 Each entry shall submit a completed Entry Form by registering online via the link at the event website [www.audimelges20worlds.com](http://www.audimelges20worlds.com) and pay the entry fee no later than Friday, 25 October 2013. Entries received after that date will be accepted only with the prior approval of the organizing authority and shall be assessed a late fee in accordance with NOR 5.2. No entries will be accepted after Wednesday, 27 November 2013. Original signatures shall be provided at registration.

## 4. CLASSIFICATION

- 4.1 Boats will conform to IAM20 class rules regarding sailor classification in accordance with the ISAF Sailor Classification Code 22. Details of the ISAF Classification Code and information on how to apply can be found on ISAF's website at [www.sailing.org/classification](http://www.sailing.org/classification).

## 5. FEES

- 5.1 The entry fee is \$1,800 and includes launch, haul, trailer storage and dockage from 11-15 December 2013, as well as tickets for up to three (3) crew members to all social events. Social events include two (2) one-hour receptions and dinners (including tax and gratuity), and 1-hour apres racing socials with beer and snacks on Wednesday, Thursday, Friday and Saturday. Morning coffee station will also be available each race day. Additional tickets to social events may be purchased at registration.
- 5.1.1 Social events include as per 5.1 are opening ceremony dinner party, daily post race beer and snacks, closing awards dinner gala.
- 5.1.2 The haul out schedule will be done based on the completed entry list.
- 5.2 Any entry received after 1 August 2013, will be assessed a late fee of \$100.
- 5.3 Any entry received after 25 October 2013, will be assessed a late fee of \$300.

**6. SCHEDULE**

**Sunday, 8 December**

1200 - 1700 .....Launch boats

**Monday, 9 December**

0900 - 1800 .....Registration, Equipment controls

1200 - 1700 .....Launch boats

**Tuesday, 10 December**

0900 - 1700 .....Registration, Equipment Controls

1000 - 1700 .....Launch boats

0930.....RC Announcement on VHF Radio

1100 .....Practice Racing, First Warning

1700 .....All Boats Afloat

1730 - 2000.....Competitor Meeting & Opening Ceremonies at  
Buccaneer Island Beach (Town Hall if bad weather)

**Wednesday, 11 December**

0930.....RC Announcement on VHF Radio

1100 .....Racing, First Warning

After Racing .....Social Event, Daily Awards at Town Hall

**Thursday, 12 December**

0930.....RC Announcement on VHF Radio

1100 .....Racing, First Warning

After Racing .....Social Event, Daily Awards at Town Hall

**Friday, 13 December**

0930.....RC Announcement on VHF Radio

1100 .....Racing, First Warning

After Racing .....Social Event, Daily Awards at Town Hall

**Saturday, 14 December**

0930.....RC Announcement on VHF Radio

1100 .....Racing, First Warning

1500.....No Warning After 1500

After Racing - 1830.....Haul Out

After Racing .....Social Event, Daily Awards at Town Hall

1930.....Awards Ceremony

**Sunday, 15 December**

0900 - 1500 .....Haul Out

**Monday, 16 December**

1600 .....All boats and trailers off Ocean Reef before 1600

\$500 per day service fee imposed

6.2 Up to ten (10) races are scheduled. The race committee (RC) may run fewer races at its discretion and may make up a race on any day, if needed. A maximum of three races may be run on any day.

**7. MEASUREMENTS**

- 7.1 Each boat shall produce a valid manufacturer declaration at registration.
- 7.2 The OA and/or Class Association representative may weigh, measure, or inspect any boat and/or her equipment and sails at any time before or after she is racing.
- 7.3 Every sails should have valid certification marks (Class rule B.1.1 & G.2.2.a). Sails that do have not a valid certification mark, may be fully measured only before or after the scheduled equipment control time, if an official measurer will be available; owners will be charged for this certifications.
- 7.4 There may be the following control checks:
  - Sail dimensions
  - Corrector Weight
  - Anti-hiking straps
  - Safety Equipment
  - Random Measurement Checks
- 7.5 The official measurer, the ICA the MNA or the ISAF may use destructive testing to determine compliance with construction and/or Class rules.

**8. SAILING INSTRUCTIONS**

- 8.1 The sailing instructions will be available after 1 December 2013 on the event web site.

**9. VENUE**

- 9.1 Attachment A shows the location of the regatta harbor and the location of the racing areas.
- 9.2 Please See Attachment 3 for Dress Code information. Dress Code will be strictly enforced by Ocean Reef Club.

**10. THE COURSES**

- 10.1 The courses to be sailed will be a windward/leeward configuration as described in the SIs.

**11. PENALTY SYSTEM**

- 11.1 IAM20CR I 3.1(a) will apply: RRS 44.1(a) and 44.2 are changed as so the penalty shall be a one turn penalty including one tack and one gybe.
- 11.2 Unless the course is shortened to finish at the windward mark, penalties within the zone of the windward mark or on the offset leg may be delayed and taken as soon as possible on the downwind leg. This changes RRS 44.2.
- 11.3 Post-race penalties will apply.
  - 11.3.1 After a race, a boat that may have broken a rule of Part 2 or rule 31 while racing may take a Post-Race Penalty for that incident. The penalty shall be a Scoring Penalty,



Audi

**MELGES<sup>20</sup>**

WORLD  
CHAMPIONSHIP

★ 2013 ★

calculated as stated in rule 44.3(c) as modified below.

11.3.2 However, rules 44.1(a) and (b) apply. A boat takes a Post-Race Penalty by informing the race committee in writing and identifying the race number and when and where the incident occurred.

11.3.3 The Post-Race Penalty shall be  
(a) 20%, if taken before the protest time limit, or  
(b) 30%, if taken after the protest time limit but before the beginning of a hearing involving the incident.

11.4 Decisions of the international jury will be final as provided in RRS 70.5.

## 12. PROTESTS ARBITRATION AND REQUESTS FOR REDRESS

12.1 IAM20CR I.1 (PROTEST TIME LIMITS) will apply. The protest time limit will be described in the sailing instructions.

12.2 IAM20CR I 3.1(b) will apply.  
In the case of a protest, the representative from each yacht that attends the protest in the protest room shall be the owner or the Group 1 driver. Group 3 sailors are not allowed in the protest room or to be in contact with the representative in the protest room.

12.3 PROTEST ARBITRATION will apply:  
12.3.1 An arbitration meeting will be held prior to a protest hearing for each incident resulting in a protest by a boat involving a rule of Part 2 or rule 31, but only if each party is represented by a person who was on board at the time of the incident. No witnesses will be permitted. However, if the arbitrator decides that rule 44.1(b) may apply or that arbitration is not appropriate, the meeting will not be held, and if a meeting is in progress, it will be closed.  
12.3.2 Based on the evidence given by the representatives, the arbitrator will offer an opinion as to what the protest committee is likely to decide:  
(a) the protest is invalid,  
(b) no boat will be penalized for breaking a rule, or  
(c) one or more boats will be penalized for breaking a rule, identifying the boats and the penalties.

12.3.3 A boat that may have broken a rule may take a Post-Race Penalty as provided in Section B. However, the penalty in NOR 11.3.3 (a) is available only until the protest time limit or until the beginning of the arbitration meeting, whichever is earlier. During a meeting, a boat may take a penalty by acknowledging her acceptance of the penalty in writing.

12.3.4 If a boat asks to withdraw her protest, the arbitrator may act on behalf of the protest committee in accordance with rule 63.1 to accept the withdrawal.

## 13. SCORING

13.1 IAM20CR I.3.2. (SCORING) will apply:  
(a) Three races are required to be completed to constitute a series.  
(b) When fewer than six races have been completed, a boat's series score will be the total of her race scores.  
(c) When six or more races have been completed, a boat's series score will be the total of her race scores excluding her worst score.

## 14. COACH AND SUPPORT BOATS

14.1 IAM20CR I.4 (OUTSIDE ASSISTANCE) will apply:  
A boat shall receive no outside assistance from: support boats, cell phone or radio communication, visual or vocal signaling, transfer of equipment or victuals or otherwise once she has left the dock for the day until she has finished the last race of the day, except in the case of emergency, or motor problems that cause the boat to not make her way to the starting area. A boat should not be towed once she has left the dock for the day until she has finished the last race of the last day, except in the case of emergency, or motor problems that cause the boat to not make her way to the starting area. If in the case of a motor problem, the boat shall make every attempt to fix the problem prior to the next days racing and shall make the boat available for inspection by the jury, race committee or class representative.

Individual coach or support boats shall not approach closer than 300 feet to any boat that is racing, except at mark roundings or



the finish line where they shall not approach closer than 100 feet upwind of the windward mark or downwind of the leeward mark, and extensions of the finish line.

At the warning signal for the start, individual coach or support boats shall leave the area being used by the racing boats and may station themselves outside of either the pin or committee signal boat, but no closer to either end than 100 feet.

Sailing Instructions for Melges 20 regattas shall contain the following instruction: Video and photos taken from any support and/or coach boat shall not be used as evidence at protest hearings. This alters RRS 63.6. The penalty for infringing this rule shall be assessed at the discretion of the event Jury or Protest Committee.

This rule is not intended as a deterrent to social interaction before and between races.

14.1.1 When the RC displays AP over H afloat boats may disregard this rule until after the RC drops flag AP ashore or otherwise cancels racing for the day (e.g., AP over A, or N over A).

14.2 Coach and support boats shall be registered with the OA during Check-in. Only support boats that have registered with the OA and carry identification provided by the OA will be allowed in the racing area.

**15. PRESS AND OFFICIAL SPECTATOR BOATS**

15.1 All press and official spectator boats shall be registered with the OA during Check-in.

15.2 Press and spectator boats shall not interfere with the racing in any way and shall stay at a distance outside the race course where their wake causes no problem.

15.3 The OA may appoint one or more press and photo boat(s) that may be allowed within the race course. The position or effects of this boat(s) shall not be grounds for redress. This changes RRS 62.1.

15.4 Press and spectator boats may be required to display an identification flag, which shall be supplied by the OA.

15.5 All Press and Spectator boats shall monitor the race committee channel at all times during racing and shall abide by any instructions made by the race committee.

**16. BERTHING**

16.1 Boats shall be kept in their assigned places in the harbor, as described by the OA during registration and check-in.

**17. HAUL-OUT RESTRICTIONS**

17.1 Boats shall not be hauled out during the regatta except with and according to the terms of prior written permission of the race committee.

**18. RADIO COMMUNICATIONS**

18.1 The Race Committee will endeavor to hail each yacht that is OCS on VHF radio. The timing of such hail, the sequence of the hails, or the failure to make, or for the competitor to hear, such an announcement shall not be grounds for redress. This changes RRS 62.1(a).

18.2 A boat shall neither make radio transmissions while racing nor receive radio communications not available to all boats. This restriction also applies to mobile phones and any other electronic device.

**19. PRIZES**

- 19.1 IAM20CR 1.5 (PRIZES) will apply:  
Additional Trophies and Prizes may be awarded to:
- (a) the best boat that includes in the crew at least one sailor under 21 and/or one female sailor
  - (b) the best boat that has an all female crew
  - (c) the best boat that has a helmsman under 21 throughout the event
  - (d) the best boat that has a Masters helmsman over 60 throughout the event
  - (e) the winner of each race.
  - (f) additional prizes may be awarded at the discretion of the RC and OA.
  - (g) the winning helmsman and each crew member for the top five boats overall.

**20. DISCLAIMER OF LIABILITY**

20.1 Liability Waiver Form - As a condition of entry, each owner, skipper and individual participating crew member shall sign a liability waiver/media release. The fully executed Liability Waiver Form shall be submitted at registration prior to racing. The Liability Waiver Form will be posted on the regatta website and available at registration. By participating in this event, each competitor agrees to release the race organizers from any and all liability associated with such competitor's participation in this event to the fullest extent permitted by law.

20.2 Sailing is an activity that carries with it an inherent risk of damage and injury. Competitors participate in the regatta entirely at their own risk. See RRS 4, Decision to Race. The International Audi Melges 20 Class Association, OROC and any sponsors and affiliated companies, and each of their officers, directors,



Audi

**MELGES<sup>20</sup>**

WORLD  
CHAMPIONSHIP

★ 2013 ★

employees, sponsors and agents (collectively as "Releasees"), will not accept any liability for material damage or personal injury or death sustained in conjunction with or prior to, during, or after the regatta.

#### 21. INSURANCE

21.1 Each participating boat shall be insured with valid third-party liability insurance with a minimum cover of \$1,000,000 per event or the equivalent if expressed in other currency. Proof of insurance shall be provided to the registration staff during the specified registration time.

#### 22. CHANGES TO NOTICE OF RACE

22.1 The organization reserves the right to change this Notice of Race in accordance with rule 89.2. Any change made to this Notice of Race will be published on the regatta website.

#### 23. MEDIA RIGHTS

Each participant shall acknowledge that all media and commercial rights belong exclusively to the organizing authority and the IAM20CA and shall grant to the OA and IAM20CA the unrestricted right and permission to use and publish any biographical information, text and images arising from the Championship including name, voice, image, likeness, biographical material as well as representations of the boats in any media worldwide (being television, print and digital media), including video footage, for the sole purposes of advertising, promoting, reporting and disseminating information regarding the Audi Melges 20 World Championship and the participants in the regatta. The OA will exercise these rights in its sole discretion or as it may agree with the event sponsors. Participants shall not reproduce, publicly communicate or distribute images of the race in any way or form without previous authorization from the OA or the IAM20CA.

#### 24. CHARTER BOATS

Please contact Andy Burdick at Melges Performance Sailboats via email at [andy@melges.com](mailto:andy@melges.com) for charter information.

#### 25. RACE OFFICIALS

Jury: Chair Willii Gohl (IJ-GER)

Race Committee: PRO Bruce Golison (USA)

#### 26. FURTHER INFORMATION

Official Event Website  
[www.audimelges20worlds.com](http://www.audimelges20worlds.com)

Official Class Website  
[www.melges20.com](http://www.melges20.com)

Event Chairman  
Hank Stuart  
Email: [Hstuart8m@gmail.com](mailto:Hstuart8m@gmail.com)  
M: +1 (585) 414-6105

International Audi Melges 20 Class Association  
International Administrator / Press Coordinator  
North American Fleet Secretary  
Joy Dunigan  
Email: [classadmin@melges20.com](mailto:classadmin@melges20.com)  
T: +1 (912) 756-6706  
F: +1 (912) 756-6728  
M: +1 (912) 398-5776

European Fleet Secretary  
Luisa Bambozzi  
Email: [eurofleet@melges20.com](mailto:eurofleet@melges20.com)  
T: +39 02 94435078  
F: +39 02 94435079

Melges Performance Sailboats  
Andy Burdick  
Email: [andy@melges.com](mailto:andy@melges.com)  
T: +1 (262) 275-1110  
F: +1 (262) 257-8012  
W: [www.melges.com](http://www.melges.com)





Audi

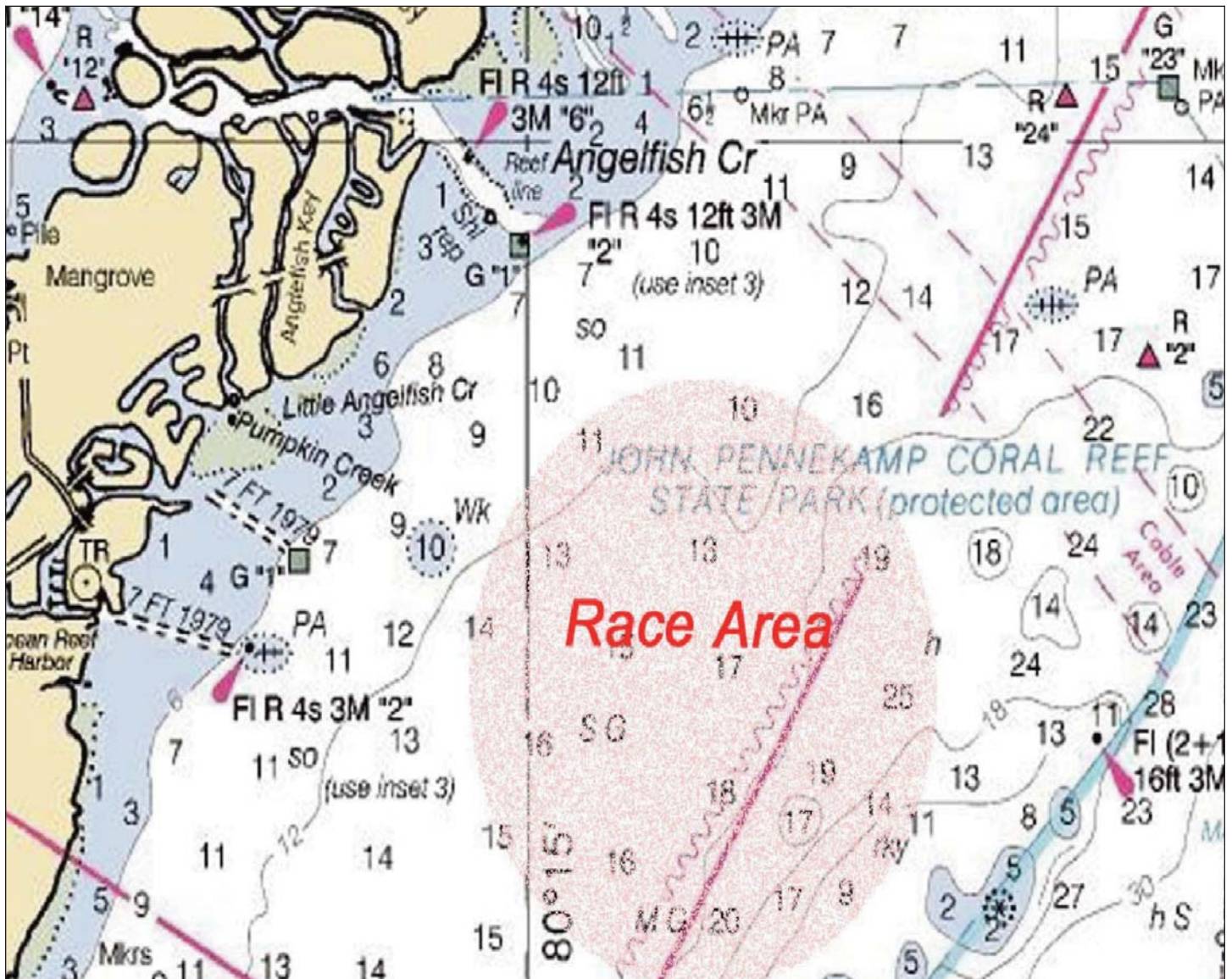
MELGES<sup>20</sup>

WORLD CHAMPIONSHIP

★ 2013 ★

### SAILING AREA AND YACHT CLUB LOCATION

Not to be used for navigation





## US SAILING PRESCRIPTIONS

The following US SAILING prescriptions to rules 40, 67, 76.1 and added rules 61.4, 76.3, 82 will apply.

**B1. AFTER RULE 40 ADD:**

"US SAILING prescribes that every boat shall carry life-saving equipment conforming to government regulations that apply in the racing area. See [http://raceadmin.ussailing.org/Rules/Personal\\_Flotation\\_Device.htm](http://raceadmin.ussailing.org/Rules/Personal_Flotation_Device.htm) for more information.

**B2. ADD RULE 61.4:**

"US SAILING prescribes that no fees shall be charged for protests or requests for redress."

**B3. AFTER RULE 67 ADD:**

"US SAILING prescribes that:

- (a) A boat that retires from a race or accepts a penalty does not, by that action alone, admit liability for damages.
- (b) A protest committee shall find fact and make decisions only in compliance with the rules. No protest committee of US Sailing appeal authority shall adjudicate any claim for damages. Such a claim is subject to the jurisdiction of the courts.
- (c) A basic purpose of the rules is to prevent contact between boats. By participating in an event governed by the rules, a boat agrees that responsibility for damages arising from any breach of the rules shall be based on fault as determined by the application of the rules, and that she shall not be governed by the legal doctrine of 'assumption of risk' for monetary damages resulting from contact with other boats."

**B4. AFTER RULE 76.1 ADD:**

"US SAILING prescribes that an organizing authority or race committee shall not reject or cancel the entry of a boat or exclude a competitor eligible under the notice of race and sailing instructions for an arbitrary or capricious reason or for reason of race, color, religion, national origin, gender, sexual orientation, or age."

**B5. ADD RULE 82:**

**INDEMNIFICATION AND HOLD HARMLESS AGREEMENTS**

"US SAILING prescribes that the organizing authority shall not require a competitor to assume any liabilities of the organizing authority, race committee, protest committee, host club, sponsors, or any other organizing or official involved in the event. (This is commonly referred to as an 'indemnification' or 'hold harmless' agreement.) See [www.ussailing.org/rules/indemnification](http://www.ussailing.org/rules/indemnification) for more information."



## DRESS CODE FOR OCEAN REEF CLUB

The Dress Code has been a long standing and cherished tradition of the members of Ocean Reef Club.

It is not overly demanding and is based on good taste and respect for the Club and its members.

### DINING ATTIRE

The required attire for gentlemen in all restaurants is best described as Keys Casual – collared shirts and dress trousers in the winter season and equally appropriate attire for ladies. If worn, shorts must be of walking length. Please note that blue denim (jeans) is only allowed in The Galley, Burgee Bar, Raw Bar and during breakfast service in the Ocean Room. During the winter season, sport coats are preferred on gentlemen in the members-only Golf Clubhouse, with neckties optional.

### HEADWEAR

Gentlemen are expected to remove their hats whenever entering a Club facility.

### CELLULAR TELEPHONES

Use of cell phones in any of the Club's restaurants is not permitted.

### Recreation Attire

Each recreational area also has dress requirements, as shown below:

### GOLF

Golf Courses and Practice Range require collared shirts for men (no mock turtle necks) and appropriate golfing shorts. Sleeveless golf blouses with collars are permissible for ladies, as is other appropriate golfing attire. Golf shoes must have non-metal spikes and shirt tails must be tucked in at all times.

### TENNIS & CROQUET

Tennis requires appropriate tennis clothing and footwear and all-white attire must be worn on the Croquet Courts.

### BATHING ATTIRE

Bathing cover-ups, as well as footwear, must be worn in all areas away from the beach and pools on Buccaneer Island.

Thong-style bathing suits are not allowed.

### OUTDOOR EXERCISE

Shirts must be worn for jogging, walking and other forms of exercise within the community. All shirts worn by gentlemen within the community must have sleeves.

The Club's standards of dress are required for all members and guests over 12 years of age.

Thank you for your assistance in maintaining the cultured family environment of the Club.



## OCEAN REEF CLUB GUEST MEMBERSHIP CARDS

Ocean Reef Club has waived the usual daily fee for guest membership cards for regatta participants.

The Guest Membership Card may be used for charges at all Club restaurants and bars as well as most retail outlets.

Other than the restaurants and bars all other outlets will take cash or your personal credit card.

Skipper/Owner may complete the form at registration/check-in. Each participant, at your discretion, may receive an Ocean Reef Guest Membership Card, charges applied to Skipper/Owner's account.

OR

Crew: If you would like any of your crew to have an Ocean Reef Guest Membership Card, their personal credit card will be imprinted at check-in. Each crew may complete a crew credit card authorization form in preparation for the regatta.



Audi

**MELGES<sup>20</sup>**

WORLD  
CHAMPIONSHIP

★ 2013 ★



OCEAN REEF CLUB®

A UNIQUE WAY OF LIFE

KEY LARGO, FLORIDA

35 Ocean Reef Drive, Suite 200  
Key Largo, FL USA 33037  
Tel: +1 (800) 741-7333  
oceanreef.com

International Audi Melges 20 Class Association  
melges20.com

**MELGES**

*Performance Sailboats*

N598 Zenda Road  
Zenda, Wisconsin 53195 • USA  
T: +1 (262) 275-1110 • F: +1 (262) 275-8012  
melges.com

**MELGES  
EUROPE**

Via Tucidide, 56 (Staz. 32)  
20134 Milano • Italy  
T: +39 02 94435078 • F: +39 02 94435079  
melgeseurope.com

Cover photo by JOY (joysavannah.com) | IM20CA

**AUDIMELGES20WORLDS.COM**

MELGES20.COM ★ OCEANREEF.COM ★ MELGES.COM ★ MELGESEUROPE.COM ★ MELGESASIAPACIFIC.COM