



Non-spinnaker PHRF racing in Captain Harbor, Greenwich, CT

1855 first warning every Wednesday from May 15 to August 21

1825 first warning August 28 and September 4

1800 prize gathering and barbecue at Indian Harbor on September 11

All boats with a YRALIS PHRF rating are eligible

\$10 registration fee

Register at Yacht Scoring [here](#)

# Notice of Race

## 1. RULES

- 1.1. The series will be governed by the rules as defined in *The Racing Rules of Sailing*.
- 1.2. US Sailing Prescriptions Appendix T and V apply.

## 2. ELIGIBILITY AND ENTRY

- 2.1. The regatta is open to all boats with a 2019 YRALIS PHRF certificate.
- 2.2. Boats without a 2019 PHRF certificate may be assigned a rating by the race committee.
- 2.3. Only boats with a 2019 YRALIS PHRF certificate will be eligible for prizes.
- 2.4. All boats shall register via Yacht Scoring at <https://yachtscoring.com/emenu.cfm?eID=9473>

## 3. FEES

The registration fee is \$10, payable via Yacht Scoring.

## 4. SCHEDULE

- 4.1. 1855 first warning every Wednesday from May 15 to August 21
- 4.2. 1825 first warning August 28 and September 4
- 4.3. 1800 prize gathering and barbecue at Indian Harbor September 11
- 4.4. One race is scheduled for each racing day.

## 5. SAILING INSTRUCTIONS

The sailing instructions will be posted to Yacht Scoring no later than 0900 on the first day of racing.

## 6. VENUE

- 6.1. Racing will be in Captain Harbor, adjacent to Greenwich, CT.
- 6.2. Addendum A shows the location of the racing area.

## 7. COURSES

Courses will be configured around a selection of the marks listed in Addendum A.

## 8. PENALTY SYSTEM

- 8.1. Appendix V1, Penalty at the Time of the Incident applies whereby a boat may take a One-Turn Penalty when she may have broken a rule of Part 2 or rule 31 while racing, but when she may have broken a rule of Part 2 while in the zone around a mark other than a starting mark, her penalty shall be a Two-Turns Penalty.
- 8.2. Appendix V2, Penalty Taken After A Race applies whereby a boat may take a post-race penalty of 30% per rule 44.3(c) but shall not be taken after a protest hearing involving the incident has begun
- 8.3. Arbitration: Appendix T applies.

## 9. SCORING

- 9.1. Series scores will be based on a high point percent-of-perfection scoring system.
- 9.2. Race results will be scored based on time-on-time and use YRA of LIS PHRF non-spinnaker ratings.
- 9.3. Only boats that start will be scored.
- 9.4. Boats scored TLE will be awarded points equal to the number of boats that finished within the time limit minus two but not less than zero.
- 9.5. A boat will qualify for the series by racing 50% of the races sailed rounded down.
- 9.6. Up to two races above the number required to qualify will be thrown out for scoring purposes.

**10. PRIZES**

- 10.1. At the prize night gathering and barbeque at Indian Harbor, September 11, IHYC will award class prizes for 1st through 3rd place.
- 10.2. Indian Harbor Yacht Club will also award class prizes for 1st through 3rd based on rescoring IHYC boats only, The Doremus Trophy will be awarded to the Indian Harbor boat that in the opinion of the flag officers (or their designee) has demonstrated the most outstanding performance.
- 10.3. Old Greenwich Yacht Club will award class prizes for 1st through 3rd based on rescoring OGYC boats only. The Commodore Kannenberg Trophy will be awarded to the best overall OGYC member finisher.

**11. DISCLAIMER OF LIABILITY**

Competitors participate in the series entirely at their own risk. See RRS 4, Decision to Race. The organizing authority will not accept any liability for material damage of personal injury or death sustained in conjunction with or prior to, during, or after the series.

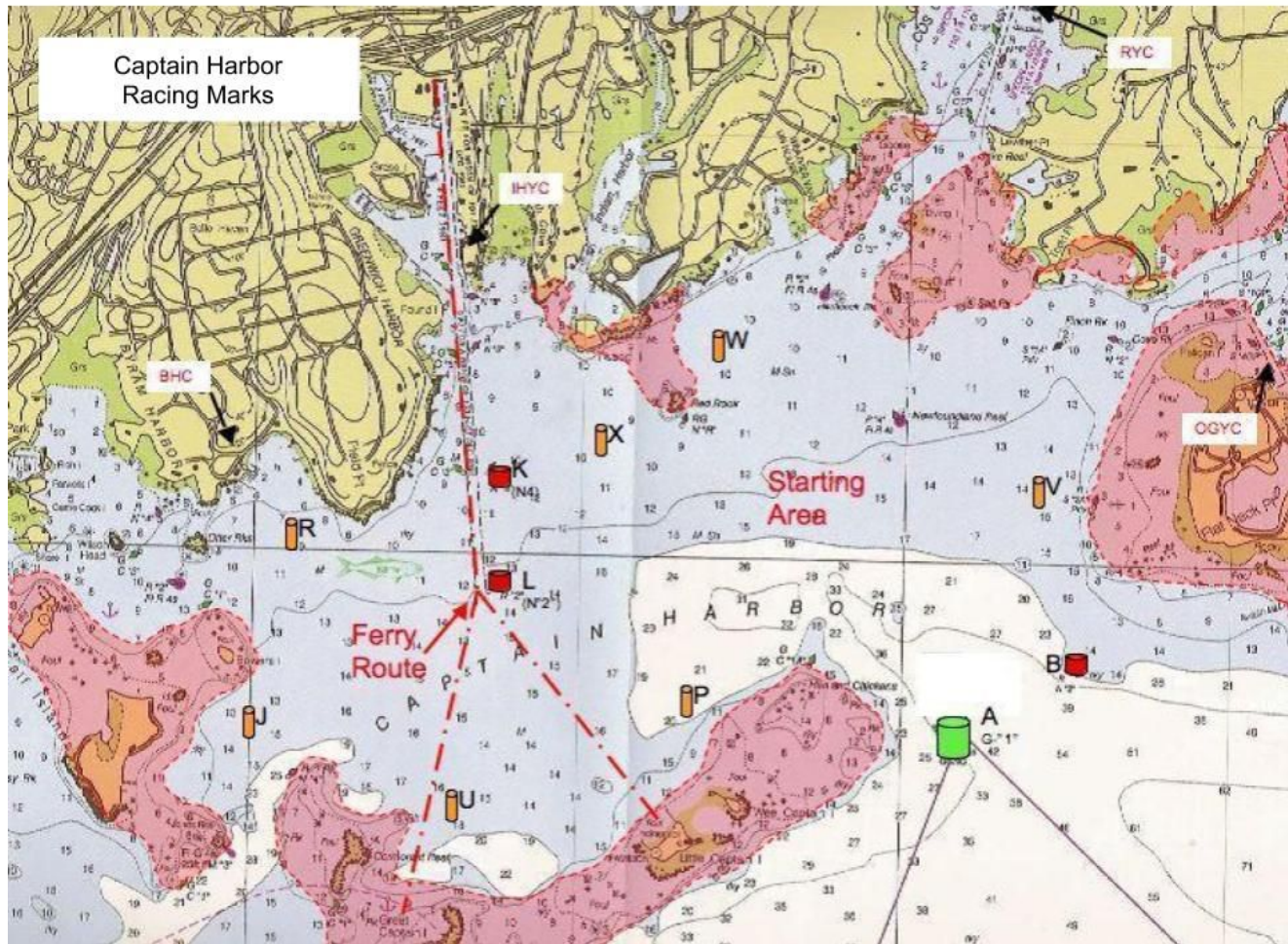
**12. INSURANCE**

Each participating boat shall be insured with valid third-party liability insurance with a minimum coverage of \$300,000 per incident or equivalent.

**13. FURTHER INFORMATION**

For further information please contact the IHYC sailing director at [sailing@indianharboryc.com](mailto:sailing@indianharboryc.com).

## ADDENDUM A



- (1) Red Rock buoy & Newfoundland Reef buoy are deemed to be marks of the course and shall be passed to the south
- (2) Hen & Chickens Can C-1A is deemed to be a mark of the course and shall be passed to the north

### Marks

A	Bell "G-1" flasher) Little Captain Island Reef.	L	Red Nun "2". Greenwich Harbor.	Q	Special Mark approximately 1/4 mi. to leeward of start.	V	Special RYC Mark West of Sugar Boat.
B	Red Nun "2", Flat Neck Point	M	Special reaching Mark , positioned on a line which is an extension of the starting line.	R	Special BHC Mark off the Belle Haven Club	W	Special RYC Mark 1/4 mi ENE of Red Rock.
C	Special Mark approx. 1 ½ mi. to windward of Start. RC may Indicate magnetic bearing.	N	Special Mark approximately ½ mi. to leeward of the start.	S	Special Mark approximately 3/4 mi. to windward of the start RC may indicate magnetic bearing	X	Special IHYC Mark SW of Tweed Island.
J	Special IHYC Mark off Calf Island	O	Special Mark approximately 100 ft. windward of the starting line.	T	Start & Finish line Mark, adjacent to RC Signal boat, may also be used as Special Mark.	Y	Special Mark approximately 1/2 mi. RC may indicate magn. Bearing .to windward of start.
K	Red Nun "4", Greenwich Harbor.	P	Special RYC Mark north of Wee Captain Island.	U	Special IHYC Mark NNE of Great Captain Island Light.	Z	Special Mark approximately 1 mi. to windward of start. RC may indicate magnetic bearing.