



SOUTHERN BAY RACE WEEK

May 30, 31 & June 1, 2014

SAILING INSTRUCTIONS

Preliminary - May 2, 2014

Organizing Authorities:

Hampton Yacht Club

Cruising Club of Virginia

Old Point Comfort Yacht Club

1. RULES

1.1 The regatta will be governed by the Racing Rules of Sailing, 2013-2016, as modified herein.

1.2 Appendix T, Section C (Expedited Hearings) will be in effect.

1.3 The J/70 Class Rules I.1.1 (Spare Gennaker) and I.1.3 (Support Boats) will apply.

2. ENTRIES

2.1 The regatta is open to monohull sailboats over 20 feet LOA.

2.2 All PHRF and Cruising Fleet boats must meet current Equipment Category Ches Bay (CB) of PHRF of the Chesapeake.

2.3 Eligible boats may enter by doing one of the following:

- a. Entering online at www.yachtscoring.com,
- b. Or by completing a 2014 CBYRA Standard Entry Form,
- c. Or by completing an official SBRW Entry Form (available at www.yachtscoring.com).
- d. Paper entries should be mailed to Lin McCarthy, 4401 Chesapeake Ave, Hampton, VA 23669.

2.4 All boats, except those in the Cruising Class, must have a current, valid measurement certificate on file with their appropriate Class Association. Cruising Class ratings will be assigned by the Race Committee and may not be appealed. PHRF ratings used will be those in effect and posted on the PHRF of the Chesapeake Valid List at the time of the event or a temporary rating issued by an official handicapper of PHRF of the Chesapeake.

2.5 An entered boat may not change fleets later than 1800 on Thursday, May 29.

2.6 The owner/skipper of each boat entered shall be responsible for the actions of his/her crew and guests. The legal drinking age in Virginia is 21 years old. Proof of age will be required and minors will not be served alcoholic beverages. In the event of a serious breach of conduct, sportsmanship, destruction of property, under age drinking, or failure to comply with a request from any regatta official, the boat or competitor may be subject to expulsion from the regatta and requests for entry in future SBRWs may be refused.

2.7 Saturday's distance race will be included as part of the Southern Bay Distance Racing Series. Sunday's racing will be included in CCV High Point Championship scoring.

3. BOAT REQUIREMENTS

3.1 Once launched, all boats shall remain in the water until the conclusion of the regatta, except with prior written permission of the Principal Race Officer.

- 3.2** Boats, except Cruising Class, shall display either the sail number issued by their National Authority (US Sailing) or the number as maintained by their fleet or class. All sail numbers on a boat must be the same, except with prior written permission from the Principal Race Officer.
- 3.3** From the backstay, each boat must clearly display her class flag or ribbon.

4. NOTICES TO COMPETITORS & CHANGES TO SAILING INSTRUCTIONS

- 4.1** Notices to competitors will be posted on the Official Notice Board located in the regatta tent.
- 4.2** Changes to these Sailing Instructions will be posted by 0800 on the day they will take effect, except that any change to the schedule of races will be posted no later than 15 minutes after the expiration of the protest time limit on the day before it will take effect. Any schedule change made on Thursday, May 29, will be posted within 15 minutes after the Skippers Meeting.
- 4.3** Oral changes to the Sailing Instructions may be given on the water by radio hail from the Race Committee on the designated VHF radio channel for each course in accordance with RRS 90.2(c). Should this be necessary, Code Flag "L" will be displayed with one sound from the RC Signal Boat a few seconds before the radio transmission.
- 4.4** The designated VHF radio channel for each course is:
- a. **Red Course** = **VHF-72**
 - b. **Blue Course** = **VHF-69**
 - c. **Saturday Finish Line** = **BAY = VHF-9 ; HARBOR = VHF-72 (Severe weather)**

5. SIGNALS MADE ASHORE

- 5.1** Signals made ashore will be displayed at the HYC flagpole.
- 5.2** The display of Flag "AP" ashore accompanied by two sound signals means the start of racing is postponed. The lowering of Flag "AP" ashore with one sound signal means the Warning Signal for the next race shall be made in not less than 60 minutes. This changes RRS Race Signals "AP".
- 5.3** In the event of severe weather, any postponement ashore or relocation of racing to the harbor will be broadcast on the designated VHF radio channel for each course at approximately 0830 and repeated periodically until 0900 (or longer if the RC deems it necessary).

6. SCHEDULE OF RACES AND COURSES

- 6.1** On Friday, multiple races (maximum of three) will be run in the harbor using triangular courses. (See Appendix B). The Cruising fleet will not race on Friday.
- 6.2** On Saturday, all boats will do one distance race in the Bay off Buckroe/Salt Ponds. (See Appendix C).
- 6.3** On Sunday, multiple windward/leeward races (maximum of three) will be run in the Bay off Ocean View. (See Appendix D). The Cruising Fleet will sail a maximum of two races.
- 6.4** When appropriate, the course to be sailed and the bearing and distance to the first mark will be displayed on the RC Signal Boat prior to the start.
- 6.5** The Race Committee will signal its intention to run another race by displaying Flag "R" from the RC Signal Boat at the finish of the race in progress.
- 6.6** The scheduled time for the Warning Signal for the first race of each day is 1000.
- 6.7** No starting sequence may begin later than 1400 on Sunday.
- 6.8** Daily schedules are:

<u>Thursday, May 29</u>	
Opening Party	1800 - 2100
Skippers Meeting	1900

<u>Friday, May 30</u>	
Warning	1000
Party	1700 - 2000
Daily Awards	1930 (approx.)

<u>Saturday, May 31</u>	
Warning	1000
Party	1700 - 2100
Daily Awards	1930 (approx.)

<u>Sunday, June 1</u>	
Warning	1000
Party & Awards	ASAP following racing

7. CLASSES AND ORDER OF STARTS

7.1 Classes and Order of Starts (Appendix E) will be officially announced, posted, and distributed at the Thursday night Skippers Meeting. Preliminary, unofficial information regarding fleets, tentative fleet splits, and Order of Starts will be posted and updated at HYC and will also be available on the event website at www.yachtscoring.com beginning a few weeks before the regatta.

7.2 Classes will be organized and, if necessary, sub-divided to produce the best, most competitive racing.

7.3 One design classes of at least five boats will be given separate starts.

8. RACING AREA

Racing areas will be:

- (a) Friday - In the Harbor off Hampton Flats (Red Course) and Craney Island (Blue Course).
See Appendix B for Friday rendezvous and course information.
- (b) Saturday - In the Bay off Salt Ponds (Red Course) and Buckroe (Blue Course).
See Appendix C for Saturday Distance Race information.
- (c) Sunday - In the Bay off Ocean View
See Appendix D for Sunday rendezvous and course information.

9. MARKS

Friday & Sunday Drop Marks

<u>Mark</u>	<u>Description</u>
Weather Mark	Orange cylinder
Wing Mark (Friday only)	Yellow West Marine inflatable
Leeward Mark	Orange cylinder
Change Mark	Yellow cylinder
Starting Pin	Lime Green cylinder
Finish Pin	Red ball

Saturday Distance Race - See Appendix C for list of marks and mark locations.

10. BOAT CHECK-IN

Before the warning signal for the first race of each day, each boat shall pass by the stern of the RC Signal Boat and hail her name and/or sail number until acknowledged by the Race Committee.

11. THE START

11.1 Races will be started using RRS 26 as modified by Instruction 11.2 below.

11.2 Approximately one minute prior to the beginning of a starting sequence, the RC will make an Attention Signal consisting of a series of short sounds. This is not a timed signal.

11.3 The starting line will be between the staff displaying an orange flag on the RC Signal Boat at the starboard end of the line and a **lime green cylinder** or the specified government mark at the port end.

12. COLLISION WITH RACE COMMITTEE BOAT

If a boat collides with any Race Committee vessel and causes injury or serious damage, her penalty shall be to retire.

13. RECALLS

13.1 Individual Recalls will be signaled in accordance with RRS 29.1. Additionally, the Race Committee will attempt to notify boats who are OCS via hail on the designated VHF radio channel for that course.

13.2 Failure of this transmission to be made or received, promptness of the notification, or the position of a boat in the notification sequence shall not be grounds for granting redress. This changes RRS 62.1 (a).

13.3 General Recalls will be signaled in accordance with RRS 29.2.

14. COURSE CHANGE AFTER START

14.1 To change the next leg of the course, the Race Committee will lay a yellow change mark and remove the original orange mark as soon as practicable. If, in a subsequent course change, the change mark is replaced, it will be replaced by an original orange mark.

14.2 If, during the signaling of a course change, Flag "Q" is displayed with Flag "C", the indicated course change applies only to the last weather leg of the course. This changes RRS 33 and RRS Race Signals.

14.3 Saturday's courses may not be changed but they may be shortened.

15. SHORTENING COURSE

15.1 Courses may be shortened as per RRS 32.

15.2 For Saturday's distance race only, the final sentence of RRS 32.2 is changed to read:

"A course may be shortened even if a boat has already passed the mark at which the race is to be shortened, provided the Race Committee was on station and recorded the exact time at which each boat rounded that mark." All boats will be scored using the time they passed the mark at which the course is shortened.

16. THE FINISH

16.1 On Friday & Sunday, for downwind finishes, the finish line will be on the opposite side of the RC Signal Boat from the starting line. The finish line will be between the staff displaying an orange flag on the RC Signal Boat at the starboard end of the finish line (looking downwind) and a red ball at the port end. The finish line will be located approximately 0.1nm to leeward of the leeward mark. (See Appendices B & D)

16.2 On Friday & Sunday, for upwind finishes, the finish line will be between the staff displaying an orange flag on the RC Finish Boat at the starboard end of the finish line (looking upwind) and an inflatable mark at the port end. The finish line will be located approximately 0.1nm to windward of the weather mark. (See Appendices B & D)

16.3 On Saturday, unless the course is shortened, the finish line for all boats will be between CCV Bay Mark "Q" (R "22") at the port end of the finish line and the staff displaying an orange flag on the seawall at Fort Monroe at the starboard end. (See Appendix C)

16.4 If Saturday's racing is moved into the harbor, the finish line for all boats will be between the staff displaying an orange flag on the RC Finish boat at the port end of the line and CCV Mark I (G "1") at the starboard end.

16.5 Each boat is responsible for taking her own finish time and recording the name and/or sail number of the boat finishing directly ahead and astern of her. This information shall be provided to the Race Committee upon request.

17. CALLING BOATS IN

17.1 In the interest of starting another race and/or completing the day's racing in a timely fashion, the Race Committee may assign a finish position to any boat(s) still racing, provided the position can be determined in a reasonable manner. Such boat(s) will be scored as though they have finished. This changes RRS 28.1, 35, A3, and A4.1 and 4.2.

17.2 If another race is to be sailed that day, once notified by the Race Committee, all boats who have been called in shall proceed as quickly as possible to the starting area so that the next race can be started promptly.

18. TIME LIMIT

18.1 On Friday and Sunday, any race in which no boat in a fleet finishes within 2 ½ hours of that fleet's start shall be abandoned for that fleet. Also, any boat still racing but not finished within 45 minutes after the first boat in her fleet finishes will be scored TLE (Time Limit Expired) and scored one point more than the number of boats in her fleet who sailed the course properly and finished within the time limit. This changes RRS 35, A4.2, A5 and A11.

18.2 For all fleets on Saturday, the time limit is 1600. Boats still racing but not finished by 1600 will be scored TLE (Time Limit Expired) and scored one point more than the number of boats who sailed the course properly and finished within the time limit. This changes RRS 35, A4.2, A5 and A11.

19. RETIRING

Any boat retiring from a race shall promptly notify the Race Committee for her course, either by hail or radio transmission on the designated VHF radio channel. Such attempt at notification shall be continued until acknowledged by the Race Committee.

20. SCORING

20.1 The regatta will be scored using the Low Point Scoring System of Appendix A.

20.2 The following will apply:

- a. There will be no throw-out.
- b. The completion of at least one race on each of two different days will constitute a regatta.

20.3 All scoring and race results will be posted on www.yachtscoring.com and on the window of the NE corner of the HYC lounge.

20.4 Daily trophies will be computed by combining all races for that day into a single score. However, all races will be considered separately for overall Race Week scoring.

21. PROTESTS

21.1 Section C (Expedited Hearings) of Appendix T (Alternate Procedures for Dispute Resolution) will be in effect for this regatta. This includes, but is not limited to, requiring that "a boat intending to protest or request redress based on an incident in the racing area... shall, at the first reasonable opportunity after she finishes, notify the race committee at the finishing line of her intent to protest or request redress...."

21.2 Written protests must be delivered to the Judges' Table in the HYC lounge within one hour of the RC Signal Boat for that boat's course docking at HYC. Also, rule 62.2 is changed to require that a written request for redress must be presented within the protest time limit or 30 minutes after the relevant incident, whichever is later.

21.3 The official Protest Notice Board will be located near the Judges' Table in the HYC lounge. All protest documents including time limits, hearing schedules, and results of hearings will be posted on this board.

21.4 A notice of protests filed and approximate hearing times will be posted on the Protest Notice Board within 15 minutes after the expiration of the Protest Time Limit. This posting constitutes the notice required for Race Committee and/or Protest Committee protests required under RRS 61.1 (b).

21.5 The penalty for breaking S.I. 3, 10, or 19 may, at the discretion of the Protest Committee, be less severe than DSQ.

22. RADIOS

22.1 The Race Committee will not respond to transmissions from competitors except to acknowledge retirements, protests, penalties reported or taken, or requests for emergency assistance.

22.2 Race Committee broadcasts of its intentions are as a courtesy only and in no way relieve competitors of their responsibility to monitor and respond to Race Committee flags and signals.

22.3 Again, the designated VHF radio channel for each course is:

- a. **Red Course** = **VHF-72**
- b. **Blue Course** = **VHF-69**
- c. **Saturday Finish Line** = **BAY = VHF-9 ; HARBOR = VHF-72 (Severe weather)**

23. COMMERCIAL TRAFFIC

23.1 A boat shall not exercise right of way over, cross in close proximity to, or interfere with reasonable transit of the race area by military vessels, commercial freighters, tugs and tows, or other commercial vessels that are unable to respond readily. Any boat protested under this rule shall have the burden of proving that she did not interfere with such vessel. Boats must take evasive action well in advance of any potentially dangerous situation.

23.2 If a boat without way in a ship channel infringes RRS 42.1 by using her engine to clear the channel, she may continue racing but, at the finish line, must inform the Race Committee of the incident and, at a subsequent hearing, must satisfy the Protest Committee that she gained no advantage by using her engine. RRS 62.1 is modified to allow consideration of this request.

24. AWARDS

24.1 Daily and series awards will be given to the top three boats in each fleet.

24.2 A Boat of the Day Flag will be presented each evening to the outstanding boat on each course. On Saturday and Sunday, a Cruising Fleet Boat of the Day Flag will also be awarded.

24.3 A Boat of the Regatta award, the Black Seal Cup, will be presented to the most outstanding boat of the regatta at the awards ceremony Sunday afternoon.

25. MEDIA RIGHTS

By their entry, competitors give absolute right and permission for any photograph or video footage of themselves or the boat they are sailing to be published in any media the regatta organizers see fit.

26. DISCLAIMER OF LIABILITY

26.1 Competitors participate in the regatta entirely at their own risk. See rule 4, Decision to Race. The organizing authority will not accept any liability for material damage or personal injury or death sustained in conjunction with or prior to, during, or after the regatta.

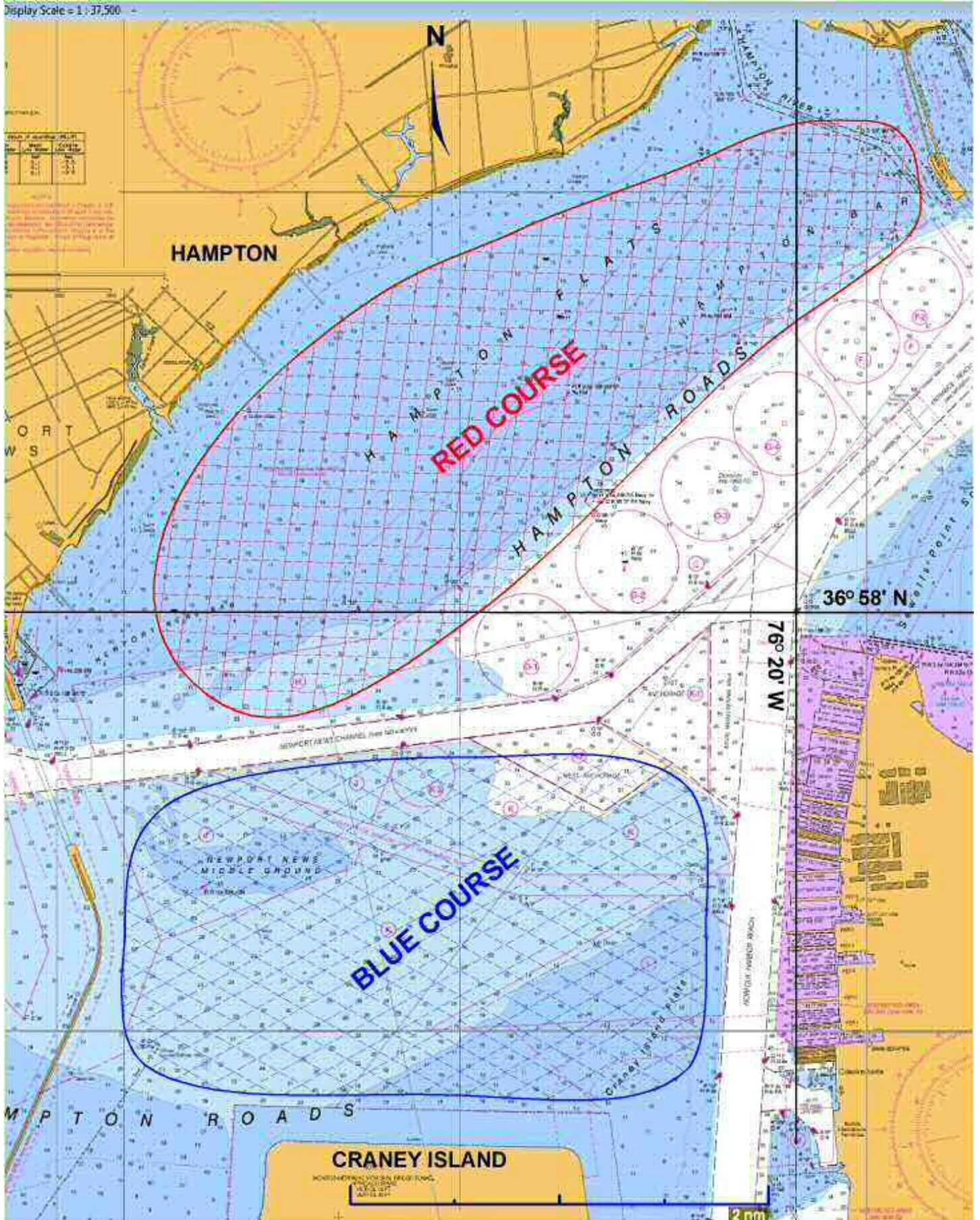
26.2 The safety of a boat and its crew is the sole responsibility of the Skipper who must ensure that the boat is sound, seaworthy, and manned by a competent crew of appropriate number for the boat.

27. REGATTA CONTACTS:

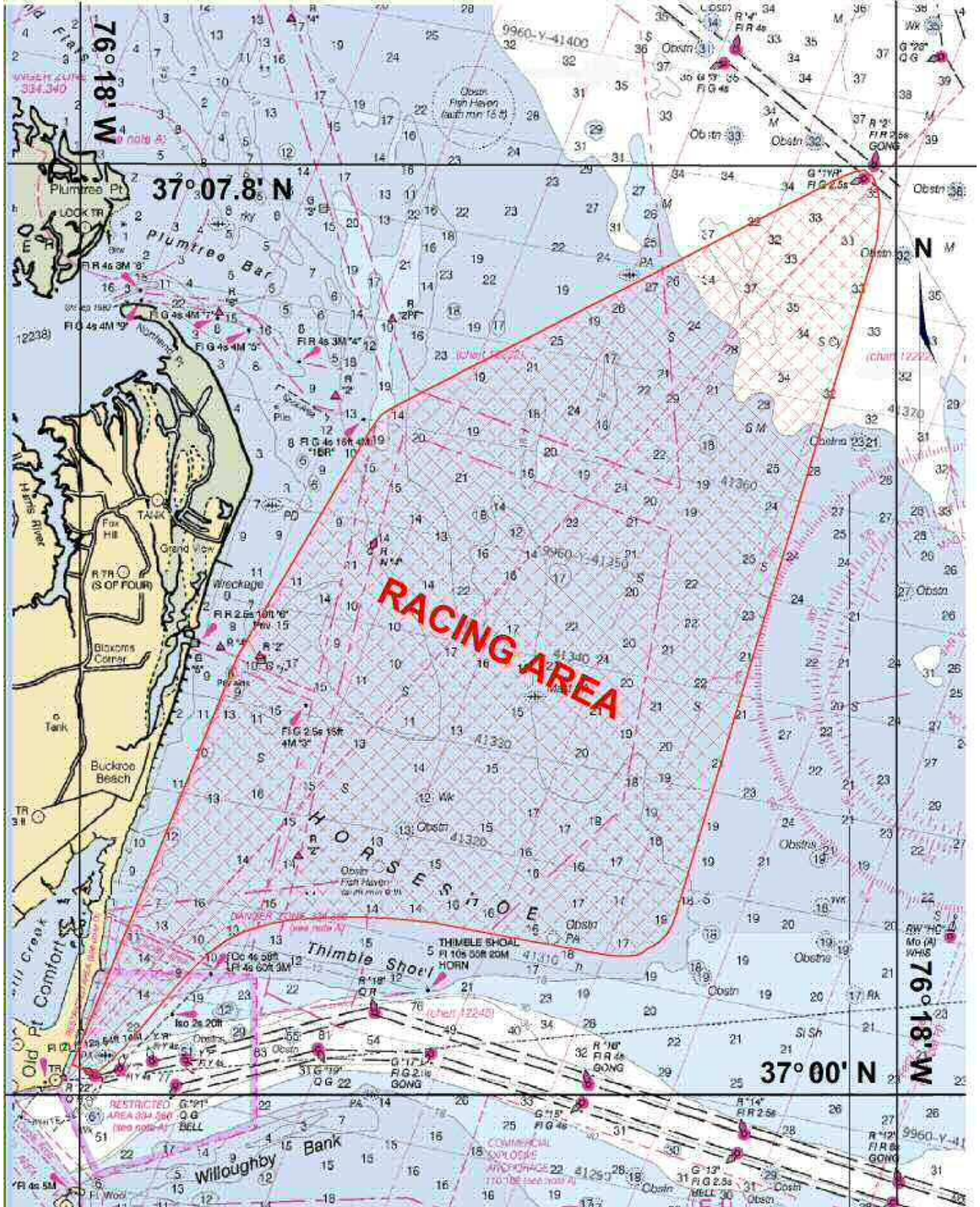
- Regatta Chairman = Jack Pope
- Principal Race Officer = John McCarthy
- Publicity & Information = Lin McCarthy (757) 850-4225 mcbear@earthlink.net

APPENDIX A
RACING AREA - FRIDAY, MAY 30, 2014

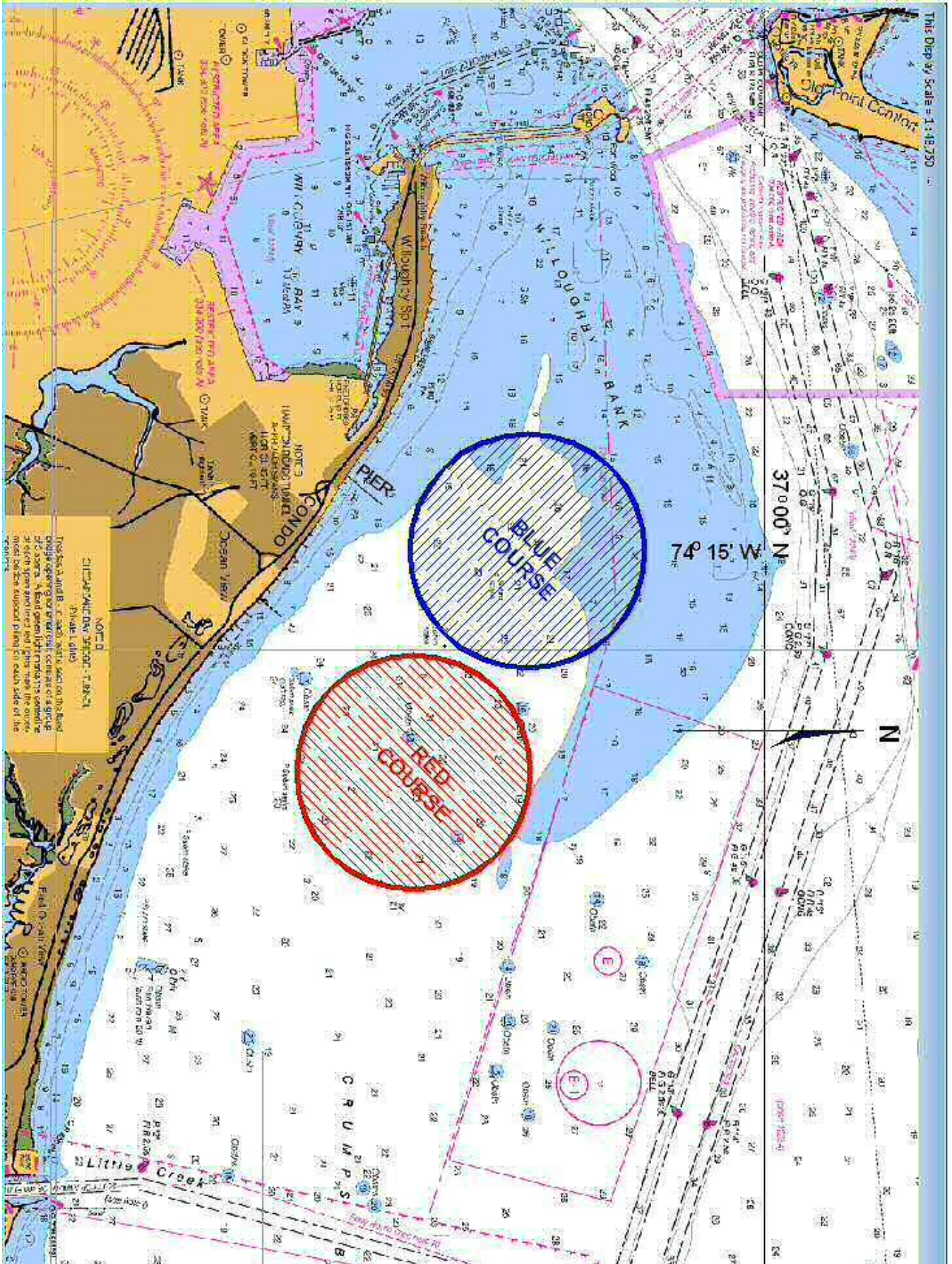
Display Scale = 1 : 37,500



APPENDIX A
RACING AREA - SATURDAY, MAY 31, 2014



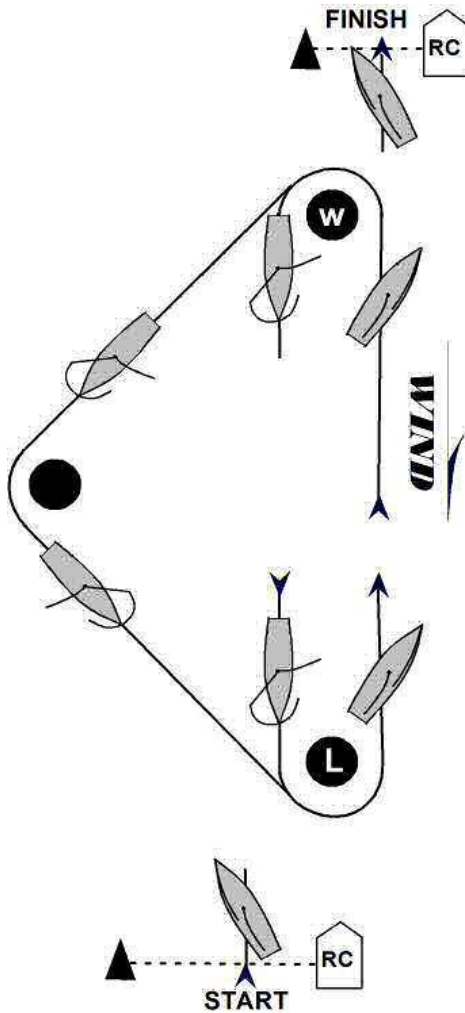
APPENDIX A RACING AREA - SUNDAY, JUNE 1, 2014



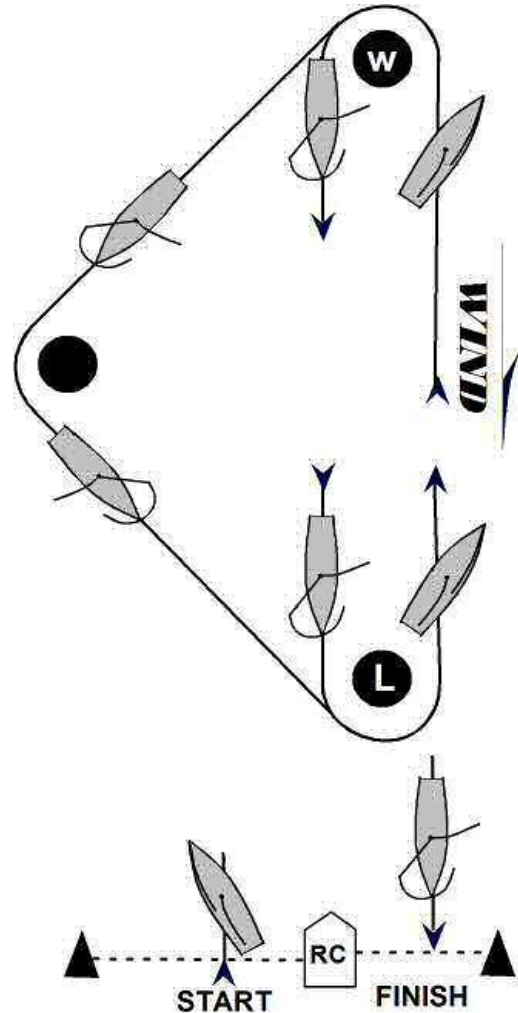
APPENDIX B

FRIDAY - TRIANGLE/WINDWARD/LEEWARD COURSES

UPWIND FINISH



DOWNWIND FINISH



****Harbor Rendezvous Locations:**

- Red Course within 1 nm of CCV "H" (R N "20")
- Blue Course within 1 nm of CCV "Q" (Y N "J")

36° 58.13' N 76° 22.03' W

36° 56.97' N 76° 22.40' W

****All marks shall be left to PORT**

****The RED number on the course board indicates the total number of legs to be sailed after sailing one triangle.**

****BLACK numbers indicate approximate bearing and distance from RC boat to first mark.**

**** Courses:**

- Course 1 = Triangle + W (finish upwind)
- Course 2 = Triangle + W + L (finish downwind)
- Course 3 = Triangle + W + L + W (finish upwind)
- Course 4 = Triangle + W + L + W + L (finish downwind)

APPENDIX C (Page 1 of 3)

SATURDAY DISTANCE RACE IN BAY

RED COURSE MARKS & COURSES

Starting Mark	CCV "X" (G "3")	37 03.23 N	76 15.65 W
Mark J (A1/A2 only)	CCV "J" ("1YR")	37 07.62 N	76 09.85 W
Drop Mark 1 ("D1")	Orange cylinder	37 06.50 N	76 12.00 W
Drop Mark 2 ("D2")	Orange cylinder	37 04.00 N	76 11.30 W
Mark "X"	CCV "X" (G "3")	37 03.23 N	76 15.65 W
Finish line	CCV "Q" (R "22")	37 00.15 N	76 17.87 W

Course for A1 & A2 FLEETS ONLY:

Start at "X" -- "J" (Star) -- "D2" (Star) -- "X" (Port) -- Finish at "Q" (17.2 nm)

Course for ALL OTHER RED COURSE FLEETS:

Start at "X" -- "D1" (Star) -- "D2" (Star) -- "X" (Port) -- Finish at "Q" (14.1 nm)

BLUE COURSE MARKS & COURSE

Starting Mark	CCV "Y" (R "2")	37 01.98 N	76 15.75 W
Drop Mark 3 ("D3")	Yellow cylinder	37 03.50 N	76 12.00 W
Drop Mark 4 ("D4")	Yellow cylinder	37 01.50 N	76 12.00 W
Mark "Y"	CCV "Y" (R "2")	37 01.98 N	76 15.75 W
Finish line	CCV "Q" (R "22")	37 00.15 N	76 17.87 W

Course for ALL BLUE COURSE FLEETS (EXCEPT CRUISING):

Start at "Y" -- "D3" (Star) -- "D4" (Star) -- "Y" (Port) -- Finish at "Q" (11.0 nm)

Course for CRUISING FLEET:

Start at "Y" -- "D3" (Star) -- "Y" (Port) -- Finish at "Q" (9.1 nm)

**Lat/Lons and distances are approximate and not intended for navigation.

**Unless a course is shortened, ALL boats will finish at "Q" – off Ft Monroe.

**The RC Finish Team will be stationed on the seawall to record finishes.

They will monitor VHF-9 and may notify boats that they have finished.

They will respond only to emergency calls or reports of protests.

**When finishing, boats should monitor VHF-9 and respond to RC requests.

APPENDIX C (Page 2 of 3)

SATURDAY DISTANCE RACE IN HARBOR (IF SEVERE WEATHER)

**IF SATURDAY'S RACING IS RELOCATED TO THE HARBOR,
RED & BLUE COURSES WILL SAIL THE COURSES SHOWN BELOW:**

Harbor Mark Descriptions and approximate locations:

RED FLEETS -- Start at CCV "I" (G "1" - Hampton Flats)	36 59.12 N	76 21.60 W
BLUE FLEETS -- Start at CCV "G" (Hampton Flats)	36 58.90 N	76 22.90 W
CCV "W" (Middle Ground Light)	36 56.71 N	76 23.48 W
CCV "Q" (Y N "J" -- Shallow Draft Fwy)	36 56.97 N	76 22.40 W
CCV "Y" (Y N "H" -- Shallow Draft Fwy)	36 56.75 N	76 21.61 W
CCV "M" (FI R 4s "8" -- N News Channel)	36 57.50 N	76 22.35 W
CCV "L" (FI R 4s "6" -- N News Channel)	36 57.58 N	76 21.42 W
CCV "X" (FI R "12"-- Norf Harbor Reach)	36 55.80 N	76 20.46 W
CCV "Z" (FI R "8" -- Norf Harbor Reach)	36 57.03 N	76 20.37 W
CCV "C" (R N "14" -- Off Hampton Bar)	36 59.77 N	76 19.40 W
ALL BOATS -- Finish at CCV "I" (G "1" - Hampton Flats)	36 59.12 N	76 21.60 W

Course for A1 & A2 FLEETS ONLY: Start at CCV "I" -- "X" (Star) -- "W" (Star) -- "C" (Star) -- "Y" (Star) -- Finish at "I" (16.4 nm)

Course for ALL OTHER RED FLEETS : Start at CCV "I" -- "Z" (Star) -- "W" (Star) -- "C" (Star) -- "L" (Star) -- Finish at "I" (13.5 nm)

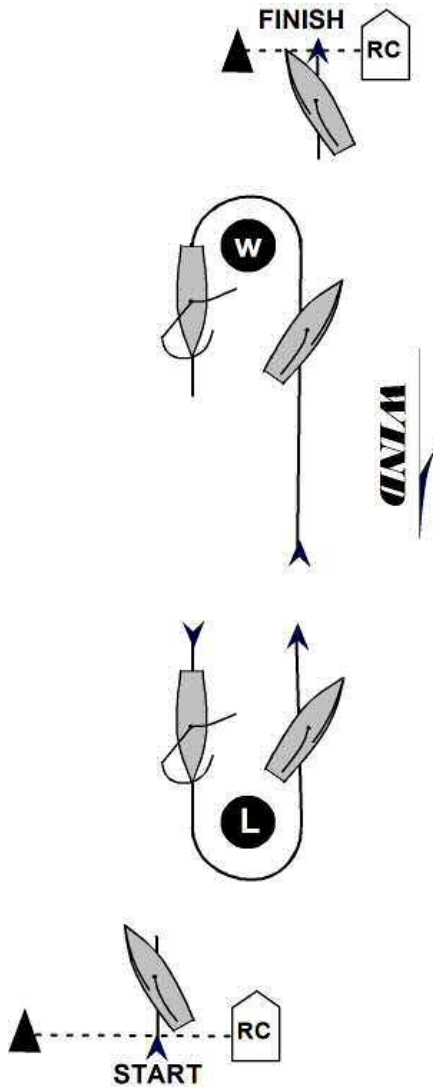
Course for ALL BLUE FLEETS (EXCEPT CRUISING): Start at CCV "G" -- "Q" (Port) -- "C" (Star) -- "L" (Star) -- Finish at "I" (10.0 nm)

Course for ALL CRUISING FLEETS: Start at CCV "G" -- "M" (Port) -- "C" (Star) -- "L" (Star) -- Finish at "I" (9.0 nm)

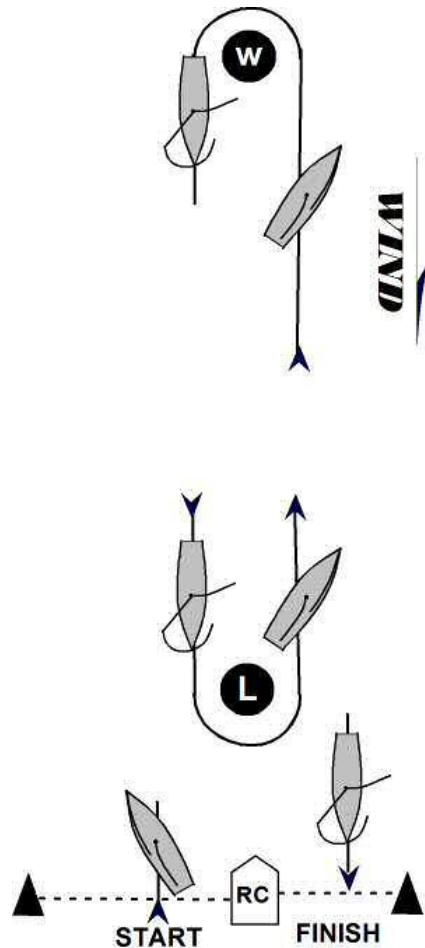
-
- **Lat/Lons and distances are approximate and not intended for navigation.
 - **Unless the course is shortened, all boats will finish at CCV "I" (G "3").
 - **The Finish Boat will monitor VHF-72. When finishing, boats should monitor VHF-72 and respond to any RC requests for information.

**APPENDIX D
SUNDAY - WINDWARD/LEEWARD COURSES**

UPWIND FINISH



DOWNWIND FINISH



****Rendezvous Locations:**

- Red Course within 1.0 nm of 36° 59.00' N 76° 15.00' W (NNE of Harrison's Pier)
- Blue Course within 1.0 nm of 36° 58.50' N 76° 16.00' W (NNW of Harrison's Pier)

****All marks shall be left to PORT**

****RED number on course board indicates total number of legs to be sailed.**

****Black numbers indicate approximate bearing and distance from the RC boat to the first mark.**

****Courses:**

- Course 2 = W + L (finish downwind)
- Course 3 = W + L + W (finish upwind)
- Course 4 = W + L + W + L (finish downwind)
- Course 5 = W + L + W + L + W (finish upwind)
- Course 6 = W + L + W + L + W + L (finish downwind)

SOUTHERN BAY RACE WEEK

APPENDIX E

CLASSES, SPLITS, AND ORDER OF STARTS

(Preliminary – May 20)

RED COURSE

<u>Fleet</u>	<u>Rating Spread</u>	<u>Class Flag (On RC Boat)</u>	<u>Class ID (On Backstay)</u>
PHRF A1	Under 82	Code Flag "1"	Code Flag "1"
PHRF A2	83-109	Code Flag "9"	Code Flag "9"
J-70	One Design	Blue Flag	Blue Ribbon
PHRF B1	110-130	White Flag	White Ribbon
PHRF B2	131-164	Code Flag "6"	Code Flag "6"

BLUE COURSE

Viper 640	One Design	White Flag	White Ribbon
J-24	One Design	Code Flag "U"	Code Flag "U"
PHRF C	Over 164	Code Flag "7"	Code Flag "7"
Non-Spin (2H)	All Ratings	Code Flag "5"	Code Flag "5"
Cruising	All Ratings	Green Flag	Green Ribbon

*****Where appropriate, ID ribbons will be supplied with the Skippers Bag.**