



NEW YORK YACHT CLUB RACE WEEK AT NEWPORT

Presented by Rolex

July 12-19, 2014
Newport, Rhode Island



SAILING INSTRUCTIONS - PART I

GENERAL

NYYC Race Week at Newport Classics Weekend will be held on Saturday and Sunday, July 12-13, with racing for Classics, 12 Metres and Herreshoff "S" Class yachts.

1 RULES

- 1.1 The regatta will be governed by the rules as defined in *The Racing Rules of Sailing* (RRS).
- 1.2 The Race Week website can be found at <http://nyyc.org/yachting/racing/nyyc-race-week>.
- 1.3 **Check-in:** Each yacht shall register at the check-in desk at the NYYC Sailing Center at Harbour Court prior to racing at the times so designated in the Notice of Race.
- 1.4 **Crew Waiver:** No crew shall be aboard a yacht while racing unless he/she has executed an online Crew Waiver Form. The Crew Waiver Forms are available on the Race Week website. Registration will not be complete without receipt of a complete Crew Waiver Form from each competitor.
- 1.5 **Safety Equipment Requirements:** All yachts shall comply with the US Nearshore section of the NOR Addendum 1 – US Safety Equipment Requirements (USSER) and shall comply with their class rules, where applicable.
 - a) USSER 2.4.2 through 2.4.8 regarding Hull and Structure: Lifelines shall apply, except that yachts not normally rigged with lifelines are exempt for these requirements and shall wear approved PFDs at all times while racing. This requirement does not apply to competitors on Classics, 6 Metres, 12 Metres or Herreshoff S Class, although they are strongly encouraged to wear PFDs.
 - b) In the event of a conflict between these Requirements and applicable class rules, the class rules shall apply.
- 1.6 The US SAILING prescriptions to the RRS that are posted as NOR Addendum 2 on the Race Week website shall apply.
- 1.7 The NYYC Classics Rules posted as NOR Addendum 3 shall apply to all yachts racing in the Classics division. CRF classes will race non-spinnaker unless the OA makes a specific exception designated on the scratch sheet.
- 1.8 The Protest Committee may impose suitable penalties, other than disqualification, for breeches of non-Part 2 rules. This changes RRS 64.1.

2 ENTRIES

Eligible yachts shall enter by completing online registration with the Organizing Authority on the Race Week website. Eligibility requirements for yachts and method of entry are detailed in the Notice of Race.

3 NOTICES, COMPETITOR INFORMATION AND SIGNALS MADE ASHORE

- 3.1 Notices, including race results, amendments and protest hearing schedules, shall be posted on the Official Notice Board and Jury Board located in the courtyard of the NYYC Sailing Center at Harbour Court. This information may also be posted on the Race Week website.
- 3.2 Flag signals will be flown from the flagpole at Harbour Court.
- 3.3 Any change to the sailing instructions will be posted before 0900 on the day it will take effect, except that any change to the schedule of races will be posted by 2000 on the day before it will take effect. Flag "Lima" will be flown to signify such posting.
- 3.4 When Pennant "AP" is displayed ashore, "one minute" is replaced with "not less than one hour" in Race Signal "AP".

4 CLASSES AND IDENTIFICATION

- 4.1 **Scratch Sheets** - The Organizing Authority will divide yachts into classes. Scratch sheets will be distributed at registration, posted on the Official Notice Board and posted on the regatta website.
- 4.2 **Backstay Flags** - Each yacht shall display the Rolex backstay flag provided at registration while racing.
- 4.3 **Class Flags** – Each yacht shall display the numeral flag corresponding to her class designation, as shown on the scratch sheet, from her backstay approximately six feet above the deck and above the Rolex flag, from the warning signal of the first class in her fleet until she is no longer racing. Yachts without a permanent backstay shall conspicuously display these flags in an alternate position in the aft part of the yacht.

5 SCHEDULE OF RACES

- 5.1 All races will count in the series.
- 5.2 Course signals are scheduled to be made at 1055 for racing on Saturday, July 12 and Sunday, July 13. The first warning signal is scheduled to be made at 1100.
- 5.3 For the first race on each day, the **Herreshoff S Class** will be the last class to start. See SI 7.1 Check-in.
- 5.4 No warning signal shall be made after 1500 on Sunday, July 13.

6 RENDEZVOUS LOCATIONS

The rendezvous location shall be in the vicinity between the north of Gould Island and Halfway Rock. The Race Committee may give further direction on VHF channel 72.

7 CHECK-IN AND RETIREMENT

- 7.1 Prior to the warning signal for the first race each day, all yachts, except for the Herreshoff S Class, shall check in with the Race Committee Signal Boat by passing astern on starboard tack and announcing their sail number. The Race Committee will acknowledge by responding with the number heard. The **Herreshoff S Class** shall **check-in** as above AFTER the 12 Metre classes have started.
- 7.2 Yachts retiring are requested to inform the Race Committee on VHF channel 72 or by calling (401) 845-9633.

8 COURSES & MARKS

The courses and marks are described in the SI Appendix A.

9 THE START

- 9.1 Races will be started in accordance with rule 26.
- 9.2 The Race Committee will endeavor to announce the next class(es) to start on VHF Channel 72.
- 9.3 A yacht starting later than 10 minutes after her starting signal will be scored Did Not Start. This changes rule A4.
- 9.4 The starting line will be between a staff displaying an orange flag on the Race Committee Signal Boat and the course side of the port-end starting mark.
- 9.5 Yachts whose warning signal has not been made shall keep clear of the starting area.

10 INDIVIDUAL RECALLS

The Race Committee will endeavor to hail each premature starter over VHF channel 72. Failure to make such an announcement, nor the timing or order of any announcement, shall not be grounds for redress. This changes rule 62.1(a).

11 THE FINISH

The finishing line will be between a staff displaying an orange flag on the Race Committee Signal Boat and the course side of the finishing mark as described in SI Addendum A.

12 GOVERNMENT BUOYS

Government buoys have no required side except when specified as marks of the course. Caution should be exercised for safe navigation.

13 PENALTY SYSTEM

- 13.1 Rule 44.1 is changed so that a yacht has the choice between penalty systems, and the Two-Turns Penalty is replaced by the One-Turn Penalty. A yacht may choose either to:
- a) take a One-Turn Penalty in accordance with rule 44.2; or
 - b) take a Scoring Penalty in accordance with rule 44.3. The scoring penalty will be 2 places.
- 13.2 A yacht that has taken a penalty shall complete a penalty acknowledgement form either online (linked on the regatta website) or on a form available from the Jury Secretary and submit no later than the end of protest time.

14 TIME LIMIT

- 14.1 The time limit to sail the course and finish is as follows:
- a) For a course around Conanicut Island or Prudence Island - six hours.
 - b) For a course using government marks or set buoys - four hours.
- 14.2 Yachts failing to finish within 60 minutes of the first yacht in her class to sail the course and finish, or within the time limit, whichever is later, will be scored Did Not Finish (DNF) and scored points as described in SI 16.3. This changes rules 35 and A4.

15 PROTESTS AND REQUESTS FOR REDRESS

- 15.1 A yacht intending to protest is requested to report both their intention and the yacht being protested to the Race Committee on the VHF channel 72 at the finish of the race.
- 15.2 Written protests or requests for redress shall be submitted to the Jury Secretary in the NYYC Sailing Center as soon as possible, but not later than one hour after the Race Committee Signal Boat has docked. The time limit for filing a protest will be posted on the Official Notice Board.
- 15.3 Protest notices will be posted as soon as possible on the Official Notice Board.
- 15.4 Protest hearings will take place at the NYYC Sailing Center as soon as possible after the notices are posted. The Jury will attempt to hear protests in the order of receipt. Representatives of yachts who are parties to a hearing shall remain on call in the vicinity of the protest rooms.
- 15.5 When a yacht has been involved in an incident that may be subject to protest, it is her responsibility to check the protest notices at the end of the protest filing time to see if she is cited in a protest. Failure of any yacht to appear when called for a hearing will be considered by the Jury as grounds for proceeding under rule 63.3(b).
- 15.6 Rule 63.5 is changed by adding, "A protest involving contact may be heard by the Protest Committee even though the requirements of rule 61.1(a) and 61.3 have not been fulfilled."
- 15.7 Breaches of SIs 4.2, 4.3, 7, 9.5 and 18.2 will not be grounds for a protest by a yacht. This changes rule 60.1(a).
- 15.8 A violation of SI 18.2 will be considered "a gross breach of a *rule*" under rule 69.1(a).
- 15.9 On Sunday, July 13, a written request for reopening a hearing shall be delivered to the Jury Secretary:
- a) Within the protest time limit if the requesting party was informed of the Protest Committee's decision on the previous day; or
 - b) No later than 30 minutes after the requesting party was informed of the Protest Committee's decision on that day; or
 - c) If no races are held on Sunday, July 13, within one hour after racing has been abandoned.
- This changes rule 66.
- 15.10 On Sunday, July 13, a request for redress based on a Protest Committee decision shall be delivered in writing no later than 30 minutes after the decision was posted. This changes rule 62.2.

16 SCORING

- 16.1 A yacht's series score will be the total of her race scores. There will be no drop race. This changes rule A2.
- 16.2 One race is required to be completed to constitute a series.

- 16.3 Yachts that have started and failed to finish within the time limit for any reason, shall, without a hearing, be scored by the Race Committee with points equal to the number of yachts in her class that have sailed the course and finished within the time limit, plus two. This changes rule A4.1, A4.2, and A5.
- 16.4 The 12 Metre classes may be started together, but will be scored separately if there are two or more entries in a division (Traditional, Modern, Grand Prix).

17 PRIZES

Prizes will be awarded as described in the Notice of Race.

18 NOTES

- 18.1 Competitors are reminded that Narragansett Bay and its approaches are considered restricted channels for commercial traffic and other vessels restricted in their ability to maneuver. Competitors must comply with the government right-of-way rules when in proximity to commercial or privileged marine traffic.
- 18.2 In the event there is racing in Narragansett Bay, competitors should be aware of heightened security around the Navy base in Newport just to the north of the Newport Jamestown Bridge. The area to the east of a line defined by a series of white buoys marking the Newport Security Zone along the coast of the Naval Facilities from Coasters Harbor to the breakwater at the north end of Coddington Cove shall rank as an obstruction. Yachts shall not enter this area. A Navy patrol boat monitors the area and vessels navigating in the Exclusionary Zone may face action by Coast Guard and Naval authorities.
- 18.3 All times herein are Eastern Daylight times. Bearings are in degrees magnetic and are approximate. Distances used herein are expressed in nautical miles (when not otherwise defined) and are approximate.
- 18.4 Newport Tides

Day	Date	High Tide	Height	Low Tide
Saturday	July 12	0811	4.2	1336
Sunday	July 13	0903	4.4	1433

- 18.5 For further information please contact:

New York Yacht Club, Harbour Court
 5 Halidon Avenue
 Newport, RI 02840
 Tel: 401-845-9633
 Fax: 401-846-3303
 Email: sailingoffice@nyyc.org
 Website: <http://nyyc.org/yachting/racing/nyyc-race-week>

- 18.6 Sponsors:

Presenting Sponsor



Official Event Sponsors



SAILING INSTRUCTIONS - APPENDIX A

Part I – Classics Weekend - Saturday-Sunday, July 12-13

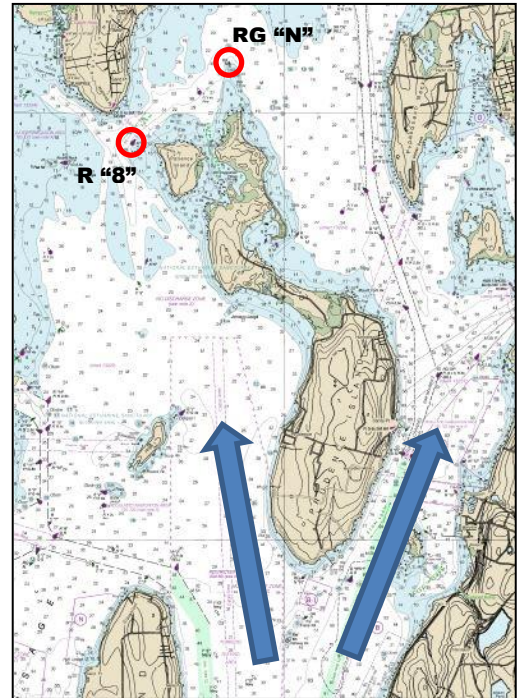
Courses will be designated using marks found on the South Bay Race Chart and in this Addendum.

A1 COURSES

A1.1 Special courses will be designated using buoys as described on the 2012-2014 South Bay Race Chart provided at registration and in this Addendum. Do not use older versions of the Race Chart. (Note: Designated courses from the back of the South Bay Race Chart will not be used.)

- a) The Race Committee will post the course on a white board on the starboard side of the Signal Boat, listing either the course (“CI” or “PI”), or the marks in the order to be rounded and the required side to leave each mark, using the designations on the 2012-2014 South Bay Race Chart or in this Addendum. The Race Committee will also announce the course on VHF channel 72. Failure to hear this announcement shall not be grounds for redress. This changes rule 62.1(a).
- b) **Special Mark “U”**
 - The Race Committee may set special mark “U” as the first mark to any course by listing “U” as the first mark as described in SI A1.1(a).
 - The magnetic bearing and distance (in nautical miles to the nearest tenth) to Mark “U” will be posted on a white board adjacent to the course board.
 - Mark “U” will be a YELLOW tetrahedron buoy.
- c) **Special Mark "L"**
 - The Race Committee may set a special mark “L” approximately 0.1 NM to windward of the start line.
 - If mark “L” is used, it will be listed as a mark as described in SI A1.1(a).
 - Mark “L” will be a YELLOW tetrahedron buoy.
- d) The course will be:
 - Start
 - Special Mark “U”, if used, to be left to the designated side.
 - Round the marks in the designated order leaving each mark to the designated side
 - Finish between a staff displaying the orange flag on the Race Committee boat displaying a blue flag and the nearby ORANGE tetrahedron finishing mark.
- e) **“CI” Around Conanicut Island** - if the Race Committee designates the course “CI” on a white board, the course will be:
 - Start
 - Special Mark “U”, if used
 - R “2” Fl R 4 Sec Bell 900 yards NE of Conanicut Point to port
 - C “5” 1,250 yards NW of Conanicut Point to port
 - The center span of the Jamestown Verrazano Bridge (for the purposes of rule 32.2(c), the center spans of the Jamestown Verrazano Bridge shall be considered a gate).
 - RG “NR” Bell 650 yards SW of Beavertail Point to port
 - Finish off Fort Adams between a staff displaying an orange flag on a Race Committee Boat displaying a blue flag and the finishing mark, which will be an ORANGE tetrahedron buoy. The finishing line will be located approximately 0.25 NM north of the Fl R 6 sec Horn “2” on the northern point of Fort Adams.

- f) **“PI” Around Prudence Island** – if the Race Committee designates the course “PI” on a white board, the course will be around Prudence Island in either direction (you choose) as follows:
- Start
 - Special Mark “U” if used
 - Leave Prudence Island, including RG N at the northern end and R “8” northwest of Patience Island, to port; **OR**
 - Leave Prudence Island, including R “8” northwest of Patience Island and RG N at the northern end, to starboard.
 - Finish
- g) **Starting/Finishing line restrictions** - After starting and before finishing, the starting and finishing lines are designated as obstructions and shall not be crossed.
- h) In fog at the finish, the Race Committee Boat may ring a bell rapidly, for approximately 5 seconds, at intervals. The same Race Committee Boat may or may not start and finish each race.



Course “PI”

A2 CHANGE OF COURSE

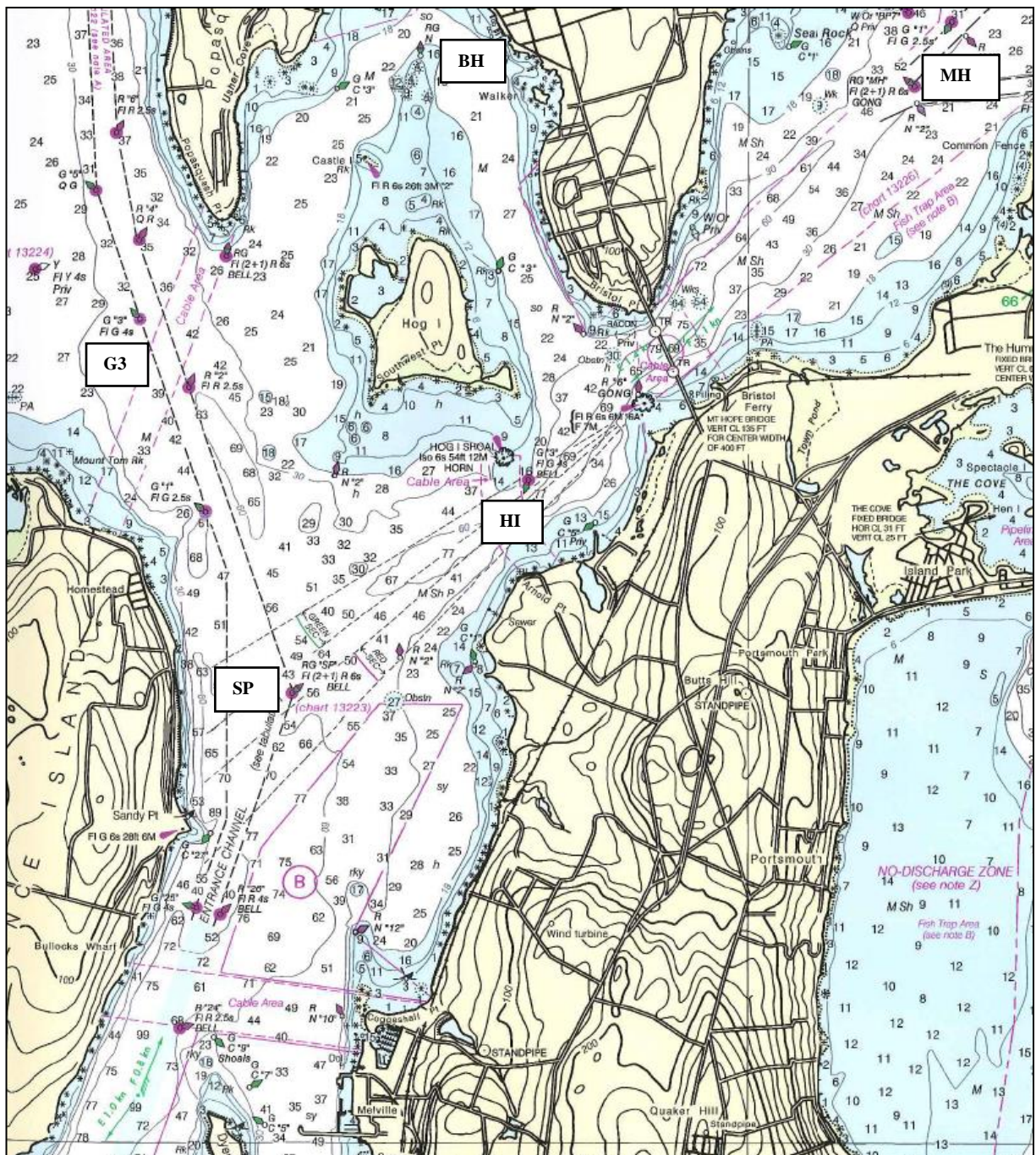
The Race Committee may change Mark “U” or Mark “L” in accordance with RRS 33. The new mark will be an ORANGE tetrahedron buoy. The Race Committee will endeavor to announce the change of course on VHF channel 72. Failure to hear this announcement shall not be grounds for redress. This changes rule 62.1(a)

A3 MARKS

- A3.1 The starting mark will be a GREEN tetrahedron buoy. The finishing mark will be a PINK tetrahedron buoy.
- A3.2 Marks “U” and “L”, if used, will be YELLOW tetrahedron buoys. New marks described in SI A2 will be ORANGE tetrahedron buoys.
- A3.3 Special NYYC Temporary Inflatable Race Marks 16 and 17 as designated on the 2012-2014 South Bay Race Chart, if used, will be ORANGE tetrahedron buoys.
- A3.4 **Additional Marks** - the following additional marks not shown on the 2012-2014 South Bay Race Chart may also be used. This diagram should not be used for navigation. See chartlet on next page and charts 13223, 13226 and 13224 for more detail.

SP	RGR “SP” Fl (2 +1) R 6s BELL approx. 0.75 NM northeast of Sandy Pt. on Prudence I	(41° 36.93’ N, 71° 17.59’ W)
G3	G “3” Fl G 4s approx. 0.5 NM southwest of Popasquash Neck	(41° 38.53’ N, 71° 18.46’ W)
MH	RGR “MH” Fl (2 +1) R 6s GONG in Mt. Hope Bay	(41° 39.54’ N, 71° 14.04’ W)
BH	RGR N “Middle Ground Buoy” approx. 0.8 NM north of Hog Island in Bristol Harbor	(41° 39.68’ N, 71° 16.87’ W)
HI	G “3” Fl G 4s BELL approx. 0.4 NM south southeast of Hog Island	(41° 37.79’ N, 71° 16.29’ W)

ADDITIONAL MARKS:



- | | | |
|-----------|--|------------------------------|
| SP | RGR "SP" Fl (2+1) R 6s BELL approx. 0.75 NM northeast of Sandy Pt. on Prudence I | (41° 36.93' N, 71° 17.59' W) |
| G3 | G "3" Fl G 4s approx. 0.5 NM southwest of Popasquash Neck | (41° 38.53' N, 71° 18.46' W) |
| MH | RGR "MH" Fl (2+1) R 6s GONG in Mt. Hope Bay | (41° 39.54' N, 71° 14.04' W) |
| BH | RGR N "Middle Ground Buoy" approx. 0.8 NM north of Hog Island in Bristol Harbor | (41° 39.68' N, 71° 16.87' W) |
| HI | G "3" Fl G 4s BELL approx. 0.4 NM south southeast of Hog Island | (41° 37.79' N, 71° 16.29' W) |

**NEW YORK YACHT CLUB
RACE WEEK AT NEWPORT
Presented by Rolex**

EVENT COMMITTEE

Peter J. Cummiskey, Event Chair

Thomas J. Harrington, Commodore, NYYC

A. Rives Potts, Jr., Vice Commodore, NYYC

Philip A. Lotz, Rear Commodore, NYYC

Paul M. Zabetakis, Chairman, NYYC Sailing Committee

RACE COMMITTEE

Samuel W. Wakeman, Chair

RACE COMMITTEE

Peter A. Gerard, PRO

John L. Myles, Jr., APRO

Ingrid M. Flynn

Thomas K. Flynn

Richard R. Gumpert

Dorothy B. Myles

Patricia Ann O'Donnell

Ellyn Osmond

Michael E. Shea

Thomas L. Stark

Allegra M. Torrey

Elizabeth Condon, Scorer

John I. Condon, Jr., Scorer

PROTEST COMMITTEE

John B. Mooney, Jr., Chair

Richard R. Gumpert

Ronald A. Hopkins

Timothea S. Larr

Samuel W. Wakeman

Judy McLennan, Secretary