



# NEW YORK YACHT CLUB RACE WEEK AT NEWPORT

Presented by Rolex

July 12-19, 2014  
Newport, Rhode Island



## PART II - SAILING INSTRUCTIONS incorporating AMENDMENT #1

### GENERAL

Racing for One-Design and Handicap classes will be run on Wednesday-Saturday, July 16-19. The J/105 and J/44 classes will race on Thursday-Saturday, July 17-19. In addition to drop mark buoy racing, a mid-distance race will be included, conditions permitting. Racing may also include races using government marks ("Navigator Races") and "stadium" racing (short W/L).

### 1 RULES

- 1.1 The regatta will be governed by the rules as defined in *The Racing Rules of Sailing* (RRS).
- 1.2 The Race Week website can be found at <http://nyyc.org/yachting/racing/nyyc-race-week>.
- 1.3 **Check-in:** Each yacht shall register at the check-in desk at the NYYC Sailing Center at Harbour Court prior to racing at the times so designated in the Notice of Race.
- 1.4 **Crew Waiver:** No crew shall be aboard a yacht while racing unless he/she has executed the online Crew Waiver Form. The Crew Waiver Forms are available on the Race Week website. Registration will not be complete without receipt of a complete Crew Waiver Form.
- 1.5 **Safety Equipment Requirements:** All yachts shall comply with the US Nearshore section of the NOR Addendum 1 – US Safety Equipment Requirements (USSER) and shall comply with their class rules, where applicable.
  - a) USSER 2.4.2 through 2.4.8 regarding Hull and Structure: Lifelines shall apply, except that yachts not normally rigged with lifelines are exempt for these requirements and all crew members shall wear approved PFDs at all times while racing.
  - b) In the event of a conflict between these Requirements and applicable class rules, the class rules shall apply.
- 1.6 The prescriptions of US SAILING that are posted as NOR Addendum 2 on the Race Week website shall apply.
- 1.7 The Protest Committee may impose suitable penalties, other than disqualification, for breeches of non-Part 2 rules. This changes RRS 64.1.
- 1.8 The 2014 IRC Rules and Regulations paragraphs A, B and C shall apply to yachts racing under IRC. IRC Rules 21.1.5 (d) and (e) are changed to require that the sails on board shall remain the same and be on board for all Drop Mark Course and Stadium Sailing races during the regatta. This requirement does not apply to the Distance Race or any Navigator Races.
- 1.9 The 2014 PHRF-NB Regulations shall apply to yachts racing under PHRF. There are no crew weight limits.
- 1.10 The current class rules shall apply to all yachts racing as a one-design class, except as noted in these sailing instructions.
- 1.11 Where there is a conflict between an Addendum to the Sailing Instructions, the Sailing Instructions and/or the Notice of Race, the document listed first in this instruction shall prevail. This changes RRS 63.7.
- 1.12 J/109 Class only: Sailing Instructions Addendum A pertains to J/109s participating in their 2014 North American Championship to be held as part of New York Yacht Club Race Week.
- 1.13 J/105 Class only: This is a Class Level A event in accordance with Class Rule 3.7. Class Rule 7.1, maximum crew weight, shall apply. There will be no weigh-in at registration.

- 1.14 Swan 42 Class only: Sailing Instructions Addendum B pertains to the Swan 42s participating in their 2014 U.S. Nationals. Class Rule 6.2.1 is in effect. One-design inshore sails shall be used for all racing including the distance race if run.
- 1.15 Marstrom 32 Class only: Sailing Instructions Addendum C pertains to the Marstrom 32 class and describes changes to these sailing instructions.

## 2 ENTRIES

Eligible yachts shall enter by completing online registration with the Organizing Authority on the Race Week website. Eligibility requirements for yachts and method of entry are detailed in the Notice of Race.

## 3 NOTICES, COMPETITOR INFORMATION AND SIGNALS MADE ASHORE

- 3.1 Notices, including race documents, results and amendments, shall be posted on the Official Notice Board. Jury information, including protest time limits and hearing schedules, shall be posted on the Jury Notice Board. Both boards are located in the courtyard of the NYYC Sailing Center at Harbour Court. This information may also be posted on the Race Week website.
- 3.2 Flag signals will be flown from the flagpole at Harbour Court.
- 3.3 Any change to the sailing instructions will be posted before 0900 on the day it will take effect, except that any change to the schedule of races will be posted by 1900 on the day before it will take effect. Flag "Lima" will be flown to signify such posting.
- 3.4 When "AP" is displayed ashore, "one minute" is replaced with "not less than one hour" in Race Signal "AP".
- 3.5 Signals designating the rendezvous locations will be displayed at 0900 each race day from the flagpole at Harbour Court. The Race Committee will endeavor to announce the fleet assignments, format and the rendezvous locations as described in SI 4 and SI 6 at that time over VHF Channel 72. The failure to make this announcement or for a yacht to hear this announcement will not be grounds for redress. This changes rule 62.1(a).
- 3.6 After the rendezvous locations and any other regatta announcements have been made, Race Committee Signal Boats will monitor and communicate with their respective fleets on the VHF channels published in SI 4.4.

## 4 CLASSES AND IDENTIFICATION

- 4.1 The Organizing Authority will divide yachts into classes. Classes will be assigned a numeral designation and assigned each day to one of three fleets (Blue, White and Green). Note that a class may sail in different fleets on different days.
- 4.2 **Format** – No later than 1900 on the day before they will take effect, the Race Committee will notify competitors of the fleet assignments for each class and the intended type of racing for the following day:
  - a) Navigator Races – SI Appendix A (racing using government marks and racing marks on Narragansett Bay)
  - b) Stadium Sailing – SI Appendix B (short W/L racing around drop marks on Narragansett Bay)
  - c) Drop Mark Races – SI Appendix C (longer drop mark racing)
  - d) Distance Race – SI Appendix D (a medium distance race on Rhode Island Sound and/or Narragansett Bay)
- 4.3 **Scratch Sheets** - The scratch sheets designating class assignments will be distributed at registration, posted on the Official Notice Board and posted on the regatta website.
- 4.4 **VHF Channels** - The Race Committee VHF channels for each fleet are:

Blue Fleet	VHF Channel 72
White Fleet	VHF Channel 69
Green Fleet	VHF Channel 71
- 4.5 **Backstay Flags** – Each yacht shall display the flag corresponding to her class designation, as shown on the scratch sheet, from her backstay approximately six feet above the deck and above the Rolex flag, from the warning signal of the first class in her fleet until she is no longer racing.
- 4.6 **Bow Stickers and Flags** - Each yacht shall display the Rolex backstay flag and bow stickers provided at registration while racing.

## **5 SCHEDULE OF RACES**

- 5.1 The first warning signal for each fleet is scheduled for 1200 on Wednesday, July 16, and 1100 on Thursday through Saturday, July 17-19.
- 5.2 No warning signal shall be made after 1500 on Saturday, July 19.

## **6 RENDEZVOUS LOCATIONS**

Fleet rendezvous locations are listed below and will be designated as described in SI 3.5.

### **Rhode Island Sound:**

- Area “A” - in the vicinity of 160° for 1.2 NM from R “2” QR Whistle marking Brenton Point
- Area “B” - in the vicinity of 120° for 2.5 NM from R “2” QR Whistle marking Brenton Point

### **Newport Harbor and near Newport Bridge:**

- Area “K” - between Goat Island and Rose Island
- Area “M” - in the vicinity of 0.5 NM west of R “12” Rose Island
- Area “O” - in the vicinity of Potter Cove (just north of west end of Newport Bridge)

### **North of Newport Bridge:**

- Area “R” - in the vicinity of 200° for 0.5 NM from Halfway Rock
- Area “T” - in the vicinity of G “7” QG off Quonset Point

## **7 CHECK-IN AND RETIREMENT**

- 7.1 Prior to the warning signal for the first race each day, all yachts shall check in with the Race Committee Signal Boat by passing astern on starboard tack and announcing their sail number. The Race Committee will acknowledge by responding with the number heard.
- 7.2 Yachts retiring are requested to inform the Race Committee on their fleet VHF channel or by calling (401) 845-9633.

## **8 COURSES & MARKS**

The courses and marks are described in the SI Appendices as follows:

- a) Navigator Races – SI Appendix A
- b) Stadium Sailing – SI Appendix B
- c) Drop Mark Races – SI Appendix C
- d) Distance Race – SI Appendix D

## **9 THE START**

- 9.1 Races will be started in accordance with rule 26.
- 9.2 A yacht starting later than 20 minutes after her starting signal will be scored Did Not Start. This changes rule A4.
- 9.3 The starting line will be between a staff displaying an orange flag on the Race Committee Signal Boat and the course side of the port-end starting mark.
- 9.4 Yachts whose warning signal has not been made shall keep clear of the starting area.

## **10 INDIVIDUAL RECALLS**

The Race Committee will endeavor to hail each premature starter over their respective fleet VHF channel. Failure to make such an announcement, nor the timing or order of any announcement, shall not be grounds for redress. This changes rule 62.1(a).

## **11 THE FINISH**

The finishing line will be between a staff displaying an orange flag on the Race Committee Signal Boat and the course side of the finishing mark as described in the relevant SI Appendix.

## 12 GOVERNMENT BUOYS

Government buoys have no required side except when specified as marks of the course. Caution should be exercised for safe navigation.

## 13 PENALTY SYSTEM

- 13.1 If class rules or a special SI Addendum specifies a penalty, a yacht that may have broken a rule of Part 2 while racing may take a penalty at the time of the incident as provided in that document.
- 13.2 For all other yachts where a class rule does not specify a penalty, rule 44.1 is changed so that a yacht has the choice between penalty systems, and the Two-Turns Penalty is replaced by the One-Turn Penalty. A yacht may choose either to:
  - a) take a One-Turn Penalty in accordance with rule 44.2; or
  - b) take a Scoring Penalty in accordance with rule 44.3.
- 13.3 A yacht that has taken a penalty shall complete an [online penalty acknowledgement form](#) or a paper form available from the Jury Secretary and submit/file it with the Jury Secretary no later than the end of protest time.

## 14 TIME LIMIT

- 14.1 The time limit to sail the course and finish is as follows:
  - a) For a Navigators Race course – five hours;
  - b) For a Stadium Sailing course – one hour;
  - c) For a Drop Mark Race course – three hours;
  - d) For a Distance Race – seven hours.
- 14.2 Yachts failing to finish within the time limit will be scored Did Not Finish (DNF) and scored points as described in SI 16.3. This changes rules 35 and A4.

## 15 PROTESTS AND REQUESTS FOR REDRESS

- 15.1 A yacht intending to protest is requested to report both their intention to protest and the yacht(s) being protested to the Race Committee on the fleet VHF channel at the finish of the race.
- 15.2 Written protests or requests for redress shall be submitted to the Jury Secretary in the NYYC Sailing Center as soon as possible, but not later than one hour after the Race Committee Signal Boat for that fleet has docked. The time limit for filing a protest will be posted on the Jury Notice Board.
- 15.3 Protest notices will be posted as soon as possible on the Jury Notice Board.
- 15.4 Protest hearings will take place at the NYYC Sailing Center as soon as possible after the notices are posted. The Jury will attempt to hear protests in the order of receipt. Representatives of yachts who are parties to a hearing shall remain on call in the vicinity of the protest rooms.
- 15.5 When a yacht has been involved in an incident that may be subject to protest, it is her responsibility to check the protest notices at the end of the protest filing time to see if she is cited in a protest. Failure of any yacht to appear when called for a hearing will be considered by the Jury as grounds for proceeding under rule 63.3(b).
- 15.6 Rule 63.5 is changed by adding, “A protest involving contact may be heard by the Protest Committee even though the requirements of rule 61.1(a) and 61.3 have not been fulfilled.”
- 15.7 Breaches of SIs 4.4, 4.5, 7, 9.4 and 18.2 will not be grounds for a protest by a yacht. This changes rule 60.1(a).
- 15.8 A violation of SI 18.2 will be considered “a gross breach of a *rule*” under rule 69.1(a).
- 15.9 On the last scheduled day of racing only, a written request for reopening a hearing shall be delivered to the Jury Secretary:
  - a) Within the protest time limit if the requesting party was informed of the Protest Committee’s decision on the previous day; or
  - b) No later than 30 minutes after the requesting party was informed of the Protest Committee’s decision on that day; or
  - c) If no races are held on the last scheduled day of racing, within one hour after racing has been abandoned.This changes rule 66.

15.10 On the last scheduled day of racing, a request for redress based on a Protest Committee decision shall be delivered in writing no later than 30 minutes after the decision was posted. This changes rule 62.2.

## 16 SCORING

16.1 A yacht's series score will be the total of her race scores weighted as follows:

- a) For a Navigators Race course – x 1.0
- b) For a Stadium Sailing course – x 0.75
- c) For a Drop Mark Race course – x 1.0
- d) For a Distance Race – x 2.0

There will be no drop race. This changes rule A2.

16.2 One race is required to be completed to constitute a series.

16.3 Yachts that have started and failed to finish within the time limit for any reason, shall, without a hearing, be scored by the Race Committee with points equal to the number of yachts in her class that have sailed the course and finished within the time limit, plus two. This changes rule A4.1, A4.2, and A5.

16.4 The PHRF class will be scored using races completed on Thursday to Saturday. Races completed on Wednesday, July 16, will count towards the J/111 class scoring, and a daily prize will be given to the top PHRF yacht for that day that is not a J/111.

16.5 Overall scoring for IRC and HPR will be calculated using corrected seconds/mile.

## 17 PRIZES

17.1 Prizes will be awarded as follows:

- a) IRC 1, IRC 2, IRC 3, Swan 42, J/44, Marstrom 32, PHRF – 1<sup>st</sup>, 2<sup>nd</sup> and 3<sup>rd</sup> place overall;
- b) HPR - 1<sup>st</sup>, 2<sup>nd</sup> and 3<sup>rd</sup> place overall (depending on the number of entries);
- c) J/109 – 1<sup>st</sup>, 2<sup>nd</sup>, 3<sup>rd</sup>, 4<sup>th</sup> and 5<sup>th</sup> place overall;
- d) The top placing J/105 within the PHRF class will receive a 1<sup>st</sup> place class trophy;
- e) The top placing J/111 within the PHRF class using all races completed on Wednesday through Saturday will receive a 1<sup>st</sup> place class trophy;
- f) The top placing PHRF yacht (other than a J/111) overall in races completed on Wednesday, July 16, will receive a daily 1<sup>st</sup>;
- g) Additional trophies may be awarded at the discretion of the Organizing Authority.

17.2 Rolex timepieces will be awarded as follows:

- a) The top IRC yacht;
- b) The yacht winning the Swan 42 U.S. National Championship; and
- c) The yacht winning the J/109 North American Championship.

17.3 The Carronade Trophy will be awarded at the New York Yacht Club Annual Awards Dinner on Thursday, November 13, in New York City to the yacht that, in the opinion of the Race Committee, has the best performance at Race Week.

## 18 NOTES

18.1 Competitors are reminded that Narragansett Bay and its approaches are considered restricted channels for commercial traffic and other vessels restricted in their ability to maneuver. Competitors must comply with the government right-of-way rules when in proximity to commercial or privileged marine traffic.

18.2 In the event there is racing in Narragansett Bay, competitors should be aware of heightened security around the Navy base in Newport just to the north of the Newport Bridge. The area to the east of a line defined by a series of white buoys marking the Newport Security Zone along the coast of the Naval Facilities from Coasters Harbor to the breakwater at the north end of Coddington Cove shall rank as an obstruction. Yachts shall not enter this area. A Navy patrol boat monitors the area and vessels navigating in the Exclusionary Zone may face action by Coast Guard and Naval authorities.

18.3 All times herein are Eastern Daylight times. Bearings are in degrees magnetic and are approximate. Distances used herein are expressed in nautical miles (when not otherwise defined) and are approximate.

18.4 Newport Tides

Day	Date	Low Tide	High Tide	Height
Wednesday	July 16	0500	1144	4.5
Thursday	July 17	0546	1240	4.4
Friday	July 18	0635	1336	4.2
Saturday	July 19	0731	1433	4.1

18.5 For further information please contact:

New York Yacht Club, Harbour Court; 5 Halidon Avenue; Newport, RI 02840

Tel: 401-845-9633; Fax: 401-846-3303

Email: [sailingoffice@nyyc.org](mailto:sailingoffice@nyyc.org)

Website: <http://nyyc.org/yachting/racing/nyyc-race-week>

18.6 Sponsors:

Presenting Sponsor



Official Event Sponsors



© Copyright New York Yacht Club 2014. All Rights Reserved.

*New York Yacht Club; NYYC; Harbour Court, club burgee; certain other logos and marks are trademarks or registered trademarks of the New York Yacht Club in the United States and other countries. All Rights Reserved. Use is prohibited without written permission of the Secretary of the New York Yacht Club.*

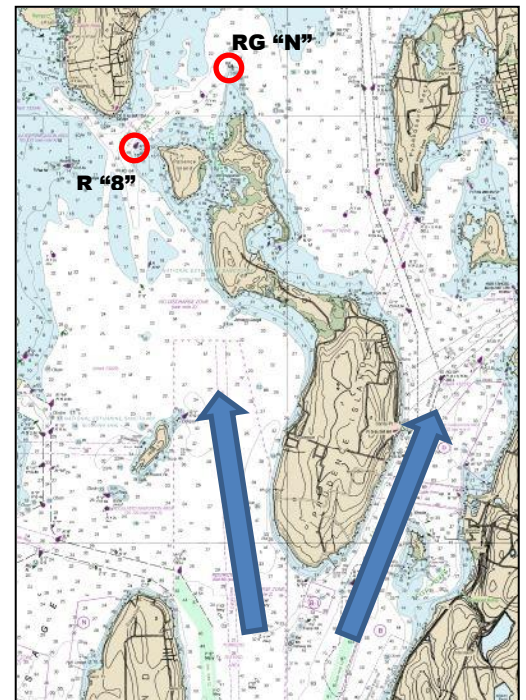
# SAILING INSTRUCTIONS - APPENDIX A

## Navigator Races

### A1 COURSES

Special courses will be designated using either the course as described in paragraph (f) below, or using marks as described on the 2012-2014 South Bay Race Chart provided at registration and in this Addendum. Do not use older versions of the Race Chart. (Note: Designated courses from the back of the South Bay Race Chart will not be used.)

- a) The Race Committee will post the course on a white board on the starboard side of the Signal Boat, listing the marks in the order to be rounded and the required side to leave each mark, using the designations on the 2012-2014 South Bay Race Chart or in this Addendum. The Race Committee will also announce the course on [the respective fleet](#) VHF channel ~~72~~. Failure to hear this announcement shall not be grounds for redress. This changes rule 62.1(a).
- b) **Newport Bridge** – Yachts shall pass through the **center span only** for any course passing under the Newport Bridge. For the purposes of rule 32.2(c), the center span shall be considered a gate.
- c) **Special Mark “U”**
  - The Race Committee may set special mark “U” as the first mark to any course by listing “U” as the first mark as described in SI Appendix A1(a).
  - The magnetic bearing and distance (in nautical miles to the nearest tenth) to Mark “U” will be posted on a white board adjacent to the course board.
  - Mark “U” will be a YELLOW tetrahedron buoy.
- d) **Special Mark “L”**
  - The Race Committee may set a special mark “L” approximately 0.1 NM to windward of the start line.
  - If mark “L” is used, it will be listed as a mark as described in SI Appendix A1(a).
  - Mark “L” will be a YELLOW tetrahedron buoy.
- e) The course will be:
  - Start
  - Special Mark “U”, if used
  - Round the marks in the designated order leaving each mark to the designated side
  - Finish between a staff displaying the orange flag on the Race Committee boat displaying a blue flag and the nearby YELLOW tetrahedron finishing mark.
- f) **“PI” Around Prudence Island** – if the Race Committee designates the course “PI” on a white board, the course will be around Prudence Island in either direction (you choose) as follows:
  - Start
  - Special Mark “U” if used (will be written above “PI”)
  - Leave Prudence Island, including RG N at the northern end and R “8” northwest of Patience Island, to port; **OR**
  - Leave Prudence Island, including R “8” northwest of Patience Island and RG N at the northern end, to starboard.
  - Finish between a staff displaying the orange flag on the Race Committee boat displaying a blue flag and the nearby YELLOW tetrahedron finishing mark.
- g) **Starting/Finishing line restrictions** - After starting and before finishing, the starting and finishing lines are designated as obstructions and shall not be crossed.



Course “PI”



- h) In fog at the finish, the Race Committee boat may ring a bell rapidly, for approximately 5 seconds, at intervals. The same Race Committee boat may or may not start and finish each race. Note that the Race Committee may shorten the course to finish at a rounding mark or gate in accordance with rule 32.

## A2 MARKS

- A2.1 The starting mark will be an ORANGE tetrahedron buoy. The finishing mark will be an [ORANGE cylinder](#) ~~YELLOW tetrahedron~~ buoy.
- A2.2 Mark “U” and “L”, if used, will be YELLOW tetrahedron buoys.
- A2.3 Special NYYC Temporary Inflatable Race Marks 16 and 17 as designated on the 2012-2014 South Bay Race Chart, if used, will be ORANGE tetrahedron buoys.
- A2.4 **Additional Marks** - the following additional marks not shown on the 2012-2014 South Bay Race Chart may also be used. See the chartlet on the following page and charts 13223, 13226 and 13224 for more detail. This chartlet should not be used for navigation.

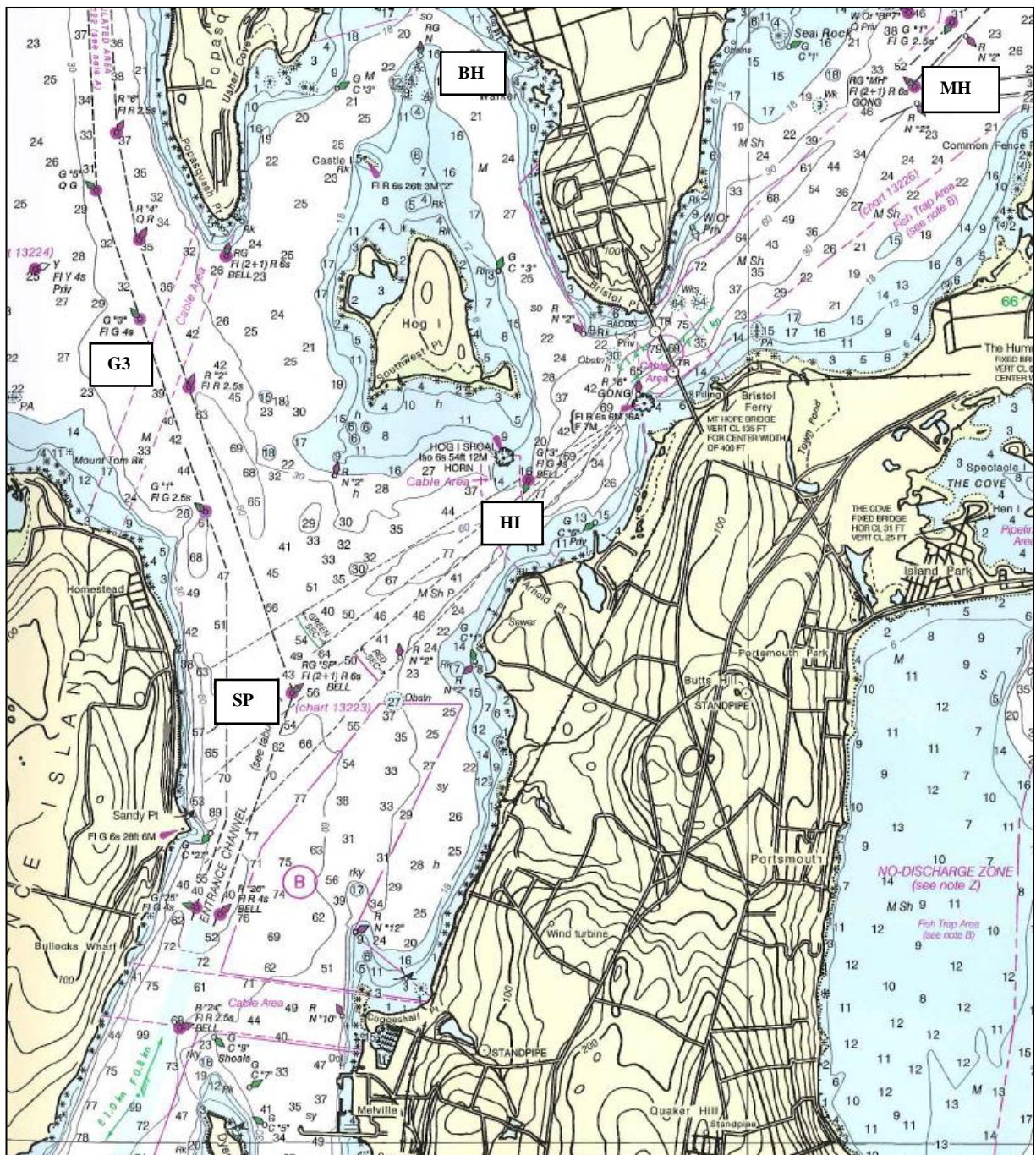
<b>SP</b>	RGR “SP” Fl (2 +1) R 6s BELL approx. 0.75 NM northeast of Sandy Pt. on Prudence I	(41° 36.93' N, 71° 17.59' W)
<b>G3</b>	G “3” Fl G 4s approx. 0.5 NM southwest of Popasquash Neck	(41° 38.53' N, 71° 18.46' W)
<b>MH</b>	RGR “MH” Fl (2 +1) R 6s GONG in Mt. Hope Bay	(41° 39.54' N, 71° 14.04' W)
<b>BH</b>	RGR N “Middle Ground Buoy” approx. 0.8 NM north of Hog Island in Bristol Harbor	(41° 39.68' N, 71° 16.87' W)
<b>HI</b>	G “3” Fl G 4s BELL approx. 0.4 NM south southeast of Hog Island	(41° 37.79' N, 71° 16.29' W)

## A3 SCHEDULE OF RACES

- A3.1 No more than ~~two~~ [four](#) Navigator Races will be run on a given day.
- A3.2 If a subsequent race is to be sailed, the finish line Race Committee Boat intends to fly Pennant “Second Substitute” with the Blue “On-Station” signal at the finish. If a Class Flag is displayed below Pennant “Second Substitute” the subsequent race is for that class(es) only. In addition, the Race Committee will attempt to announce a subsequent race on their respective fleet VHF channel.



ADDITIONAL MARKS:



- |           |   |                              |
|-----------|---|------------------------------|
| <b>SP</b> | RGR "SP" FI (2 +1) R 6s BELL approx. 0.75 NM northeast of Sandy Pt. on Prudence I | (41° 36.93' N, 71° 17.59' W) |
| <b>G3</b> | G "3" FI G 4s approx. 0.5 NM southwest of Popasquash Neck                         | (41° 38.53' N, 71° 18.46' W) |
| <b>MH</b> | RGR "MH" FI (2 +1) R 6s GONG in Mt. Hope Bay                                      | (41° 39.54' N, 71° 14.04' W) |
| <b>BH</b> | RGR N "Middle Ground Buoy" approx. 0.8 NM north of Hog Island in Bristol Harbor   | (41° 39.68' N, 71° 16.87' W) |
| <b>HI</b> | G "3" FI G 4s BELL approx. 0.4 NM south southeast of Hog Island                   | (41° 37.79' N, 71° 16.29' W) |

# SAILING INSTRUCTIONS – APPENDIX B

## Stadium Sailing

### B1 COURSES FOR STADIUM SAILING RACES

B1.1 The Race Committee Signal Boat will signal the Course Number by displaying a numeral pennant. The approximate magnetic bearing and distance in nautical miles and tenths from the Race Committee Signal Boat to Mark 1 will be displayed on a white board on the Race Committee Signal Boat..

Course 2: Start - 1 - 1a - Finish (Downwind)

Course 3: Start - 1 - 1a - Gate - Finish (Upwind)

Course 4: Start - 1 - 1a - Gate - 1 - 1a - Finish (Downwind)

Course 5: Start - 1 - 1a - Gate - 1 - 1a - Gate - Finish (Upwind)

Course 6: Start - 1 - 1a - Gate - 1 - 1a - Gate- 1 - 1a - Finish (Downwind)

B1.2 Marks 1 and 1a shall be rounded to port. Mark 1a is an offset mark and will be positioned to port of Mark 1. In the event Mark 1a is not in place the boats shall round Mark 1 to port

B1.3 In the event that a Gate is not in place, boats shall round the existing Leeward mark to port. Except when there is a change of course, the Gate will be positioned approximately to windward of the Race Committee Signal Boat. The Gate may be laid after the starting signal.

B1.4 Except for when there is a change of course:

- a) the finish for course 2, 4 and 6 will be downwind of the Gate; and
- b) the finish for course 3 and 5 will be upwind of Mark 1.

### B2 MARKS

B2.1 Marks will be inflatable ~~tetrahedron~~-buoys as follows:

<u>Original marks</u>	<u>Starting</u>	<u>Finishing</u>	<u>Change marks</u>
Yellow <a href="#">tetrahedron</a>	Orange <a href="#">tetrahedron</a>	<del>Yellow</del> Orange <a href="#">cylinder</a>	Orange <a href="#">tetrahedron</a>

B2.2 Offset marks will be small round orange buoys.

### B3 COURSE CHANGE

B3.1 In addition to the requirements in rule 33, the Race Committee will attempt to announce any course change on their respective fleet VHF channel. Failure to make such an announcement shall not be grounds for redress. This changes rule 62.1(a).

B3.2 The new mark will be a different color (orange or yellow) from the original mark as described in SI Appendix B2.1. For a subsequent change, the new mark will be the same as the original mark.

### B4 THE FINISH

B4.1 The finishing line will be between a staff displaying an orange flag on a Race Committee Boat and the finishing mark.

- a) For Course “W”, with an odd number of legs, the finishing line will be located approximately 0.1 NM to windward of the windward mark.
- b) For Course “W”, with an even number of legs, the finishing line will be located approximately 0.1 NM to leeward of the leeward mark and the finishing mark will be on the opposite side of the Race Committee Signal Boat from the starting mark.

B4.2 The Race Committee will attempt to announce a subsequent race on the fleet VHF channel.

B4.3 In fog at the finish, the Race Committee Boat may ring a bell rapidly, for approximately 5 seconds, at intervals. The same Race Committee Boat may or may not start and finish each race.

### B5 SCHEDULE OF RACES

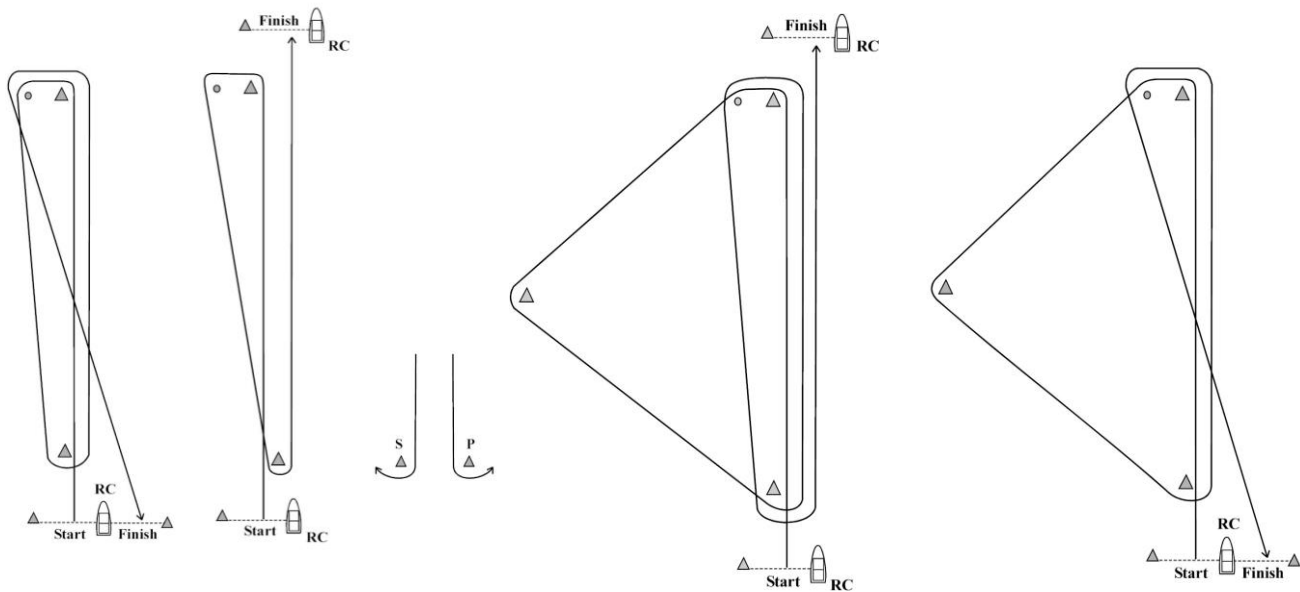
No more than five Stadium Sailing Races will be run on a given day.

# SAILING INSTRUCTIONS – APPENDIX C

## Drop Mark Races

### C1 COURSES FOR DROP MARK RACES

#### C1.1 Course Diagrams



**Course “W”**  
Even # legs

**Course “W”**  
Odd # legs

**Gate**  
**Marks**

**Course “O”**

**Course “K”**

C1.2 **Course “W”** is a Windward/Leeward course with a windward offset mark. A numeral pennant indicating the number of **LEGS** to be raced will be flown beneath Flag “W”. The distance between the windward mark and the offset mark shall not count as a leg for the purposes of indicating the number of legs.

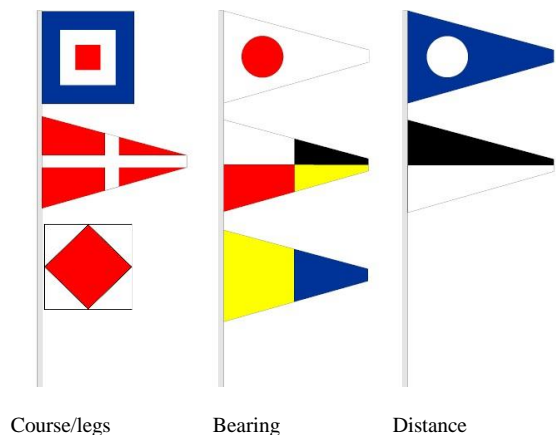
C1.3 **Course “O”** is a Triangle/Windward/Leeward/Windward course.

C1.4 **Course “K”** is a Triangle/Windward/Leeward course.

C1.5 The leeward mark for Courses “W”, “O”, and “K” will be an inflatable mark(s) set approximately 0.10 NM to windward of the starting line. A gate mark may be used for Course “W”.

C1.6 The course designation, distance and bearing to the windward mark will be signaled using flags displayed on poles. The course designation will be flown forward, followed by the three numeral pennants designating the magnetic bearing to the first mark, followed by the two numeral pennants designating distance (nautical miles and tenths) to the first mark.

<bow of RC



Course/legs

Bearing

Distance

**Example shown:** *Course W4 with finish in accordance with SI C1.10; windward mark 195° at 2.6 nm*

C1.7 Marks, including the windward offset mark, shall be rounded in order and always left to port, except that a gate, when used, shall be rounded as described in rule 28.1(c).



C1.8 There will be a windward offset mark adjacent to the windward mark for all drop mark courses except as noted in SI Appendix C1.9(c).

### C1.9 Long Windward Mark:

- a) For course “W” with an even number of legs, the Race Committee may set a long windward mark and a short windward mark.
- b) The distance displayed will be to the SHORT windward mark. The long windward mark will be on the same bearing at a distance of 1.0 NM beyond the short windward mark.
- c) The long windward mark will have a black band and there will be no offset mark.
- d) If flag “U” is displayed below the course signals, that class will use the LONG windward mark for each weather leg in that race. If flag “U” is NOT displayed below the course signals, that class will use the SHORT windward mark for each weather leg in that race.

This changes the diagrams in SI Appendix C1.1, as well as SI Appendix C1.2, C1.7, C1.8 and C2.2.

### C1.10 Special Finish Mark “F”

If flag “F” is displayed beneath the course designation, the finishing line for that class will be between a staff displaying an orange flag on a Race Committee Boat and an ORANGE finishing mark in the vicinity of the northern tip of Fort Adams. In the absence of the Race Committee Boat and/or finishing mark, the finishing line will be on a bearing of 300° from the Fort Adams Light “2” (FI R 6 sec. 32 ft 7 M “2” HORN). This changes the diagrams in SI Appendix C1.1, as well as SI Appendix C1.2, C1.7 and C2.1.

## C2 MARKS FOR DROP MARK COURSES

C2.1 Marks will be inflatable tetrahedron buoys as follows:

<u>Fleet</u>	<u>Original marks</u>	<u>Starting</u>	<u>Finishing</u>	<u>Change marks</u>
WHITE	Yellow	Orange	<del>Yellow</del> Green	Orange
BLUE	Orange	Yellow	<del>Orange</del> Pink	Yellow

C2.2 Offset marks will be small round orange buoys.

## C3 COURSE CHANGE

C3.1 In addition to the requirements in rule 33, the Race Committee will attempt to announce any course change on their respective fleet VHF channel. Failure to make such an announcement shall not be grounds for redress. This changes rule 62.1(a).

C3.2 The new mark will be a different color (orange or yellow) from the original mark as described in SI Appendix C2.1. For a subsequent change, the new mark will be the same as the original mark.

## C4 THE FINISH

C4.1 The finishing line will be between a staff displaying an orange flag on a Race Committee Boat and the finishing mark.

- c) For Course “W”, with an odd number of legs, and Course “O”, the finish line will be located approximately 0.1 NM to windward of the windward mark.
- d) For Course “W”, with an even number of legs, and Course “K”, the finish line will be located approximately 0.1 NM to leeward of the leeward mark and the finishing mark will be on the opposite side of the Race Committee Signal Boat from the starting mark. See diagrams in SI Appendix C1.1.

C4.2 If a subsequent race is to be sailed, the finish line Race Committee Boat intends to fly Pennant “Second Substitute” with the Blue “On-Station” signal at the finish. If a Class Flag is displayed below Pennant “Second Substitute” the subsequent race is for that class(es) only. In addition, the Race Committee will attempt to announce a subsequent race on their respective fleet VHF channel.

C4.3 In fog at the finish, the Race Committee Boat may ring a bell rapidly, for approximately 5 seconds, at intervals. The same Race Committee Boat may or may not start and finish each race.

## C5 SCHEDULE OF RACES

No more than three Drop Mark Races will be run on a given day.

# SAILING INSTRUCTIONS – APPENDIX D

## Distance Race

### D1 START

- D1.1 It is the intention of the Race Committee to display course signals at 1055 and the warning signal for the first class at 1100.
- D1.2 The rendezvous location will be included in the Race Committee's announcement on VHF Channel 72 at 0900 in accordance with SI 3.5 and SI 6.
- D1.3 The Race Committee will use the VHF channel listed in SI 4.4.

### D2 MARKS

- D2.1 The starting mark will be an orange tetrahedron buoy. Mark "U", if used, will be a yellow tetrahedron buoy. The finishing mark will be a yellow tetrahedron buoy.
- D2.2 The following are the designations for the rounding marks that might be used:
- |   |   |  |
|---|---|--|
| A | Conanicut Island (including GR "NR" BELL off Beaver Tail) |  |
| B | R "6" Q R southeast of Quonset Point                      | 41° 35.03' N; 071° 23.58' W                                      |
| C | RG "SP" Fl (2+1) R 6s BELL                                | 41° 36.92' N; 071° 17.59' W                                      |
| D | Gould Island  | 41° 32.00' N; 071° 20.67' W (center of Island)                   |
| E | G R "EP" Fl G BELL north of Newport Br.                   | 41° 30.675' N; 071° 20.83' W                                     |
| F | R "12" Fl R 4s BELL southwest of Rose I                   | 41° 29.67' N; 071° 20.68' W                                      |
| G | R "2" QR WHIS Brenton Reef                                | 41° 25.94' N; 071° 21.78' W                                      |
| H | RW "NB" Mo(A) WHIS  | 41° <u>23.00'</u> N; 071° 23.36' W                               |
| J | R "2" Fl R 4s WHIS south of Point Judith                  | 41° <u>18.46'</u> N; 071° 28.35' W                               |
| K | R N "2NS" Nebraska Shoal                                  | 41° <u>20.98'</u> N; 071° 34.50' W                               |
| L | G "1 BI" Fl G 4s BELL north of Block I                    | 41° <u>15.49'</u> N; 071° <u>34.55'</u> W                        |
| M | Block Island including Black Rock Pt. Buoy 2              | 41° 08.42' N; 071° 35.74' W ( <u>round in either direction</u> ) |
| N | GR "NR" BELL off Beavertail                               | 41° 26.64' N, 071° 24.15' W                                      |
| O | RW "SR" Mo(A) WHIS  | 41° 25.76' N; 071° 13.38' W                                      |
| P | R "6" BELL off Castle Hill                                | 41° 27.44' N, 071° 21.98' W                                      |
| Q | Buzzards Light Tower Fl 2.5s 67ft 17M Horn                | 41° 23.82' N, 071° 02.08' W                                      |
| U | Special NYYC Racing Mark                                  | inflatable 8' yellow tetrahedron buoy                            |
| W | G "3" Fl G 4s GONG Whale Rock                             | 41° 26.66' N, 071° 25.23' W                                      |
- D2.3 G "9" Fl G 2.5s Gong off Bull Pt and G "11" Q G Bell off The Dumplings shall be passed on the channel side at all times.

### D3 COURSES

Special courses will be designated using rounding marks as described in SI Appendix D2.2.

- a) The Race Committee will post the course on a white board on the starboard side of the Signal Boat, listing the marks in the order to be rounded, and the required side to leave each mark. If designated, Mark M, Block Island and Black Rock Pt. Buoy 2, may be rounded in either direction and a required side will not be listed. If the Race Committee plans to post a different course for a subsequent class, they will signal a postponement and post the new course. The Race Committee will also announce the course on the fleet VHF channel. Failure to hear this announcement shall not be grounds for redress. This changes rule 62.1(a).
- b) Special Mark "U"
- The Race Committee may set special mark "U" as the first mark to any course by listing "U" as the first mark as described in SI Appendix D3(a).

- The magnetic bearing and distance (in nautical miles to the nearest tenth) to Mark “U” will be posted on a white board adjacent to the course board.
  - Mark “U” will be a YELLOW tetrahedron buoy.
- c) The course will be:
- Start
  - Special Mark “U”, if used
  - Round the marks in the designated order leaving each mark to the designated side
  - The **finishing line** will be off Fort Adams between a staff displaying an orange flag on a Race Committee Boat displaying a blue flag and the finishing mark, which will be a YELLOW tetrahedron buoy. The finishing line will be located approximately 0.25 NM north of the Fl R 6 sec Horn “2” on the northern point of Fort Adams.
- d) In fog at the finish, the Race Committee Boat may ring a bell rapidly, for approximately 5 seconds, at intervals. The same Race Committee Boat may or may not start and finish each race.